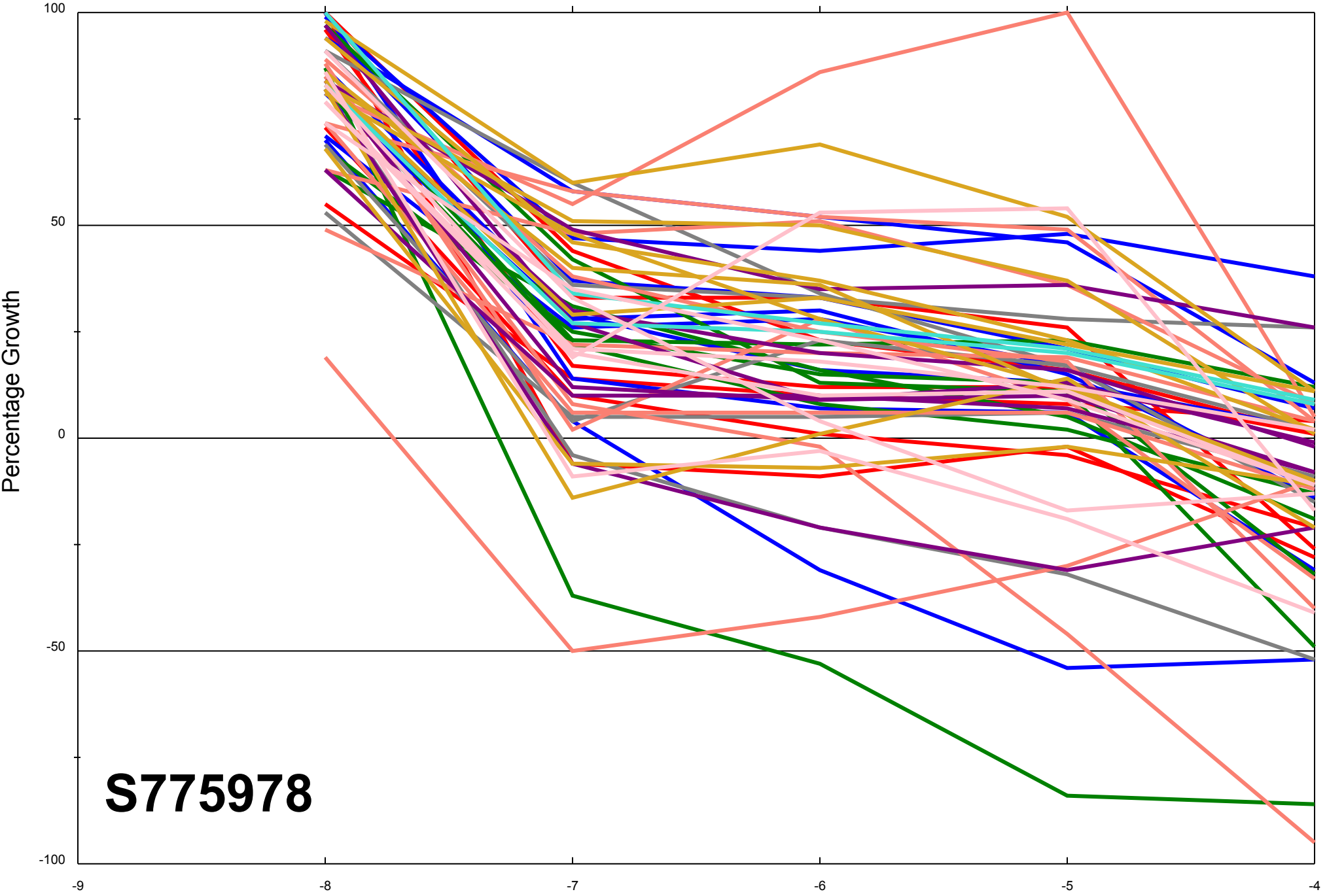


Dose Response Curves

Report Date:February 05, 2014

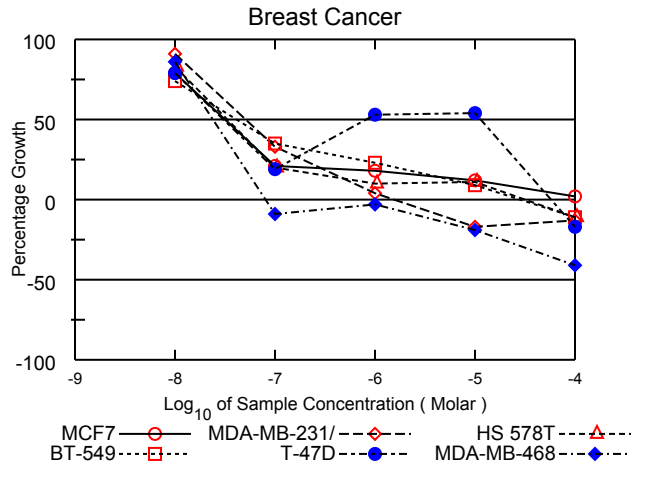
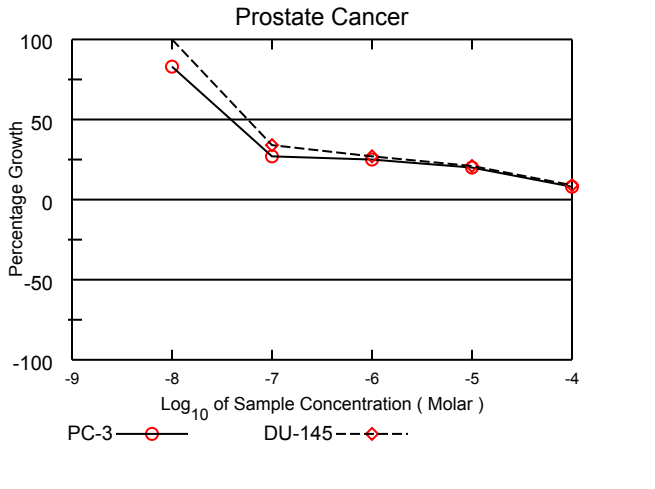
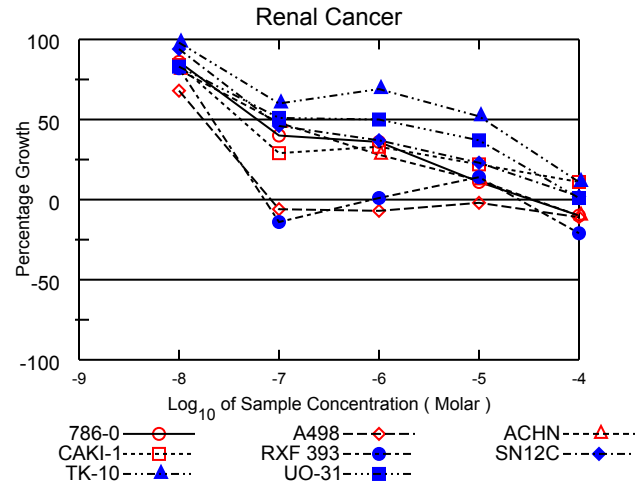
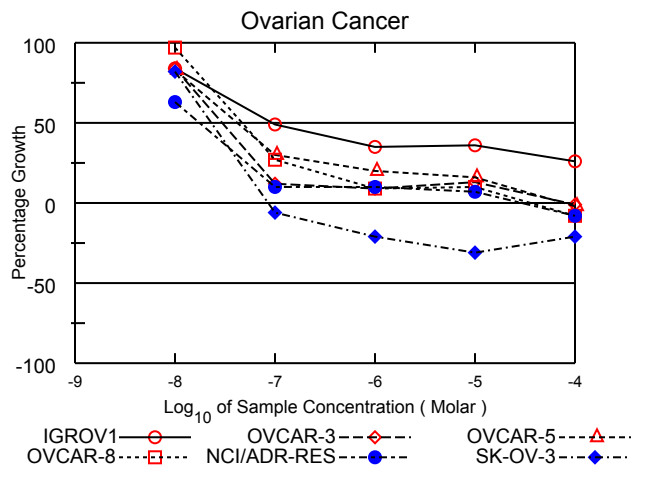
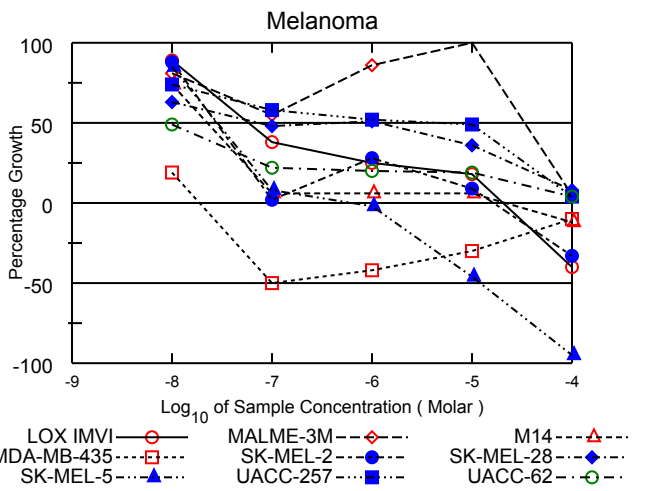
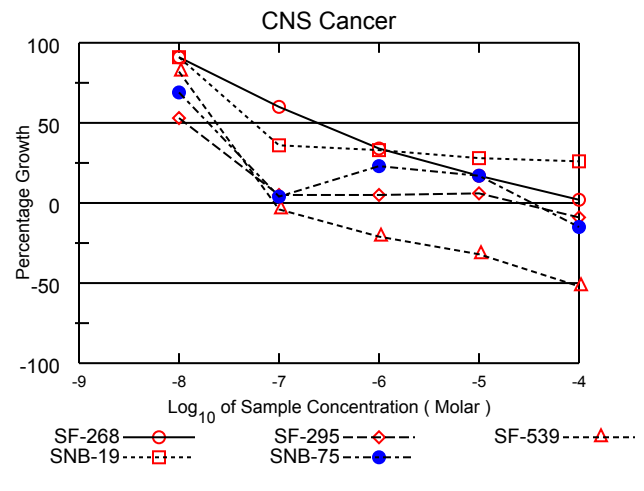
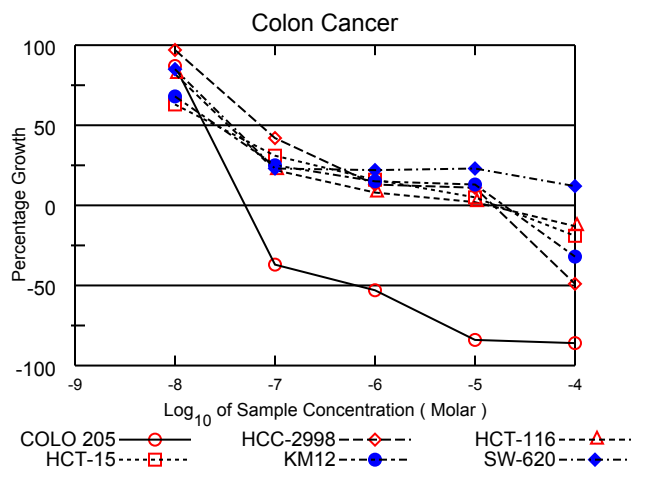
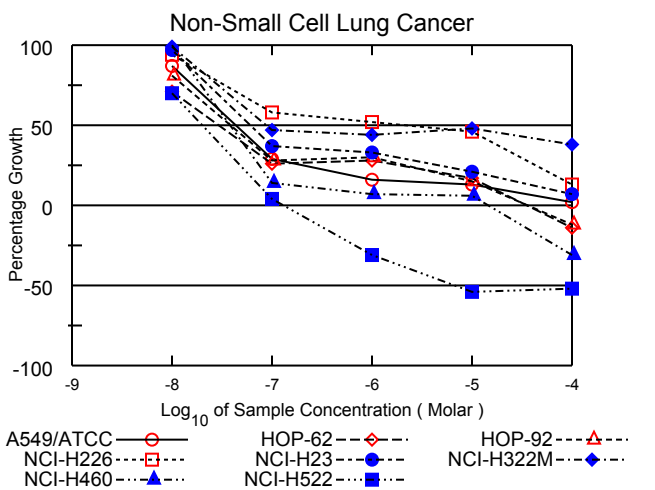
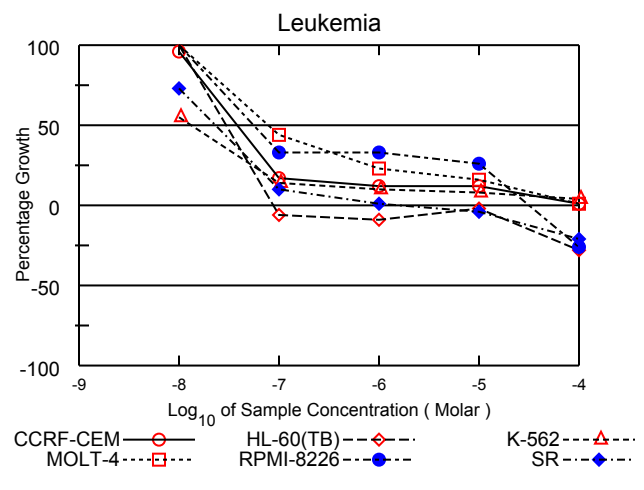
Test Date:November 26, 2013

All Cell Lines



S775978

Log₁₀ of Sample Concentration (Molar)



National Cancer Institute Developmental Therapeutics Program In-Vitro Testing Results

NSC : 775978 / 1	Experiment ID : 1311NS88	Test Type : 08	Units : Molar
Report Date : February 05, 2014	Test Date : November 26, 2013	QNS :	MC :
COMI : NMR/22297885 (125234)	Stain Reagent : SRB Dual-Pass Related	SSPL : 0YAR	

Panel/Cell Line	Log10 Concentration												GI50	TGI	LC50	
	Time	Mean Optical Densities						Percent Growth								
	Zero	Ctrl	-8.0	-7.0	-6.0	-5.0	-4.0	-8.0	-7.0	-6.0	-5.0	-4.0				
Leukemia																
CCRF-CEM	0.466	1.694	1.646	0.679	0.612	0.616	0.481	96	17	12	12	1	3.85E-8	> 1.00E-4	> 1.00E-4	
HL-60(TB)	0.959	3.111	3.158	0.899	0.868	0.940	0.694	102	-6	-9	-2	-28	3.03E-8	8.75E-8	> 1.00E-4	
K-562	0.148	1.012	0.623	0.266	0.238	0.221	0.179	55	14	10	8	4	1.32E-8	> 1.00E-4	> 1.00E-4	
MOLT-4	0.827	2.609	2.828	1.618	1.236	1.121	0.848	112	44	23	16	1	8.26E-8	> 1.00E-4	> 1.00E-4	
RPMI-8226	0.953	2.452	2.470	1.450	1.443	1.347	0.706	101	33	33	26	-26	5.65E-8	3.19E-5	> 1.00E-4	
SR	0.396	1.601	1.273	0.523	0.412	0.379	0.311	73	10	1	-4	-21	2.32E-8	1.72E-6	> 1.00E-4	
Non-Small Cell Lung Cancer																
A549/ATCC	0.345	1.828	1.637	0.769	0.582	0.544	0.377	87	29	16	13	2	4.31E-8	> 1.00E-4	> 1.00E-4	
HOP-62	0.740	1.902	1.562	1.041	1.061	0.933	0.633	71	26	28	17	-14	2.90E-8	3.42E-5	> 1.00E-4	
HOP-92	1.332	1.885	1.778	1.485	1.500	1.414	1.169	81	28	30	15	-12	3.78E-8	3.53E-5	> 1.00E-4	
NCI-H226	0.778	2.225	2.134	1.620	1.526	1.441	0.970	94	58	52	46	13	1.92E-6	> 1.00E-4	> 1.00E-4	
NCI-H23	0.516	1.640	1.606	0.927	0.883	0.750	0.596	97	37	33	21	7	5.99E-8	> 1.00E-4	> 1.00E-4	
NCI-H322M	0.780	1.760	1.754	1.237	1.208	1.252	1.155	99	47	44	48	38	8.63E-8	> 1.00E-4	> 1.00E-4	
NCI-H460	0.323	2.998	2.994	0.701	0.506	0.475	0.222	100	14	7	6	-31	3.82E-8	1.42E-5	> 1.00E-4	
NCI-H522	0.929	2.041	1.705	0.973	0.638	0.431	0.446	70	4	-31	-54	-52	2.00E-8	1.29E-7	6.89E-6	
Colon Cancer																
COLO 205	0.488	1.393	1.277	0.310	0.231	0.078	0.069	87	-37	-53	-84	-86	2.00E-8	5.06E-8	6.83E-7	
HCC-2998	0.666	2.064	2.022	1.247	0.847	0.825	0.337	97	42	13	11	-49	7.04E-8	1.54E-5	> 1.00E-4	
HCT-116	0.218	2.059	1.731	0.618	0.372	0.256	0.190	82	22	8	2	-13	3.41E-8	1.37E-5	> 1.00E-4	
HCT-15	0.432	2.776	1.904	1.153	0.808	0.553	0.351	63	31	16	5	-19	2.51E-8	1.64E-5	> 1.00E-4	
KM12	0.474	2.283	1.703	0.931	0.747	0.705	0.324	68	25	15	13	-32	2.63E-8	1.94E-5	> 1.00E-4	
SW-620	0.419	3.010	2.624	1.017	0.984	1.022	0.723	85	23	22	23	12	3.68E-8	> 1.00E-4	> 1.00E-4	
CNS Cancer																
SF-268	0.627	1.941	1.818	1.415	1.068	0.849	0.648	91	60	34	17	2	2.39E-7	> 1.00E-4	> 1.00E-4	
SF-295	0.272	1.165	0.748	0.321	0.318	0.325	0.247	53	5	5	6	-9	1.17E-8	2.43E-5	> 1.00E-4	
SF-539	0.899	2.364	2.094	0.867	0.711	0.609	0.437	82	-4	-21	-32	-52	2.35E-8	9.07E-8	7.82E-5	
SNB-19	0.479	1.761	1.648	0.946	0.906	0.842	0.808	91	36	33	28	26	5.66E-8	> 1.00E-4	> 1.00E-4	
SNB-75	0.883	1.796	1.509	0.924	1.097	1.042	0.750	69	4	23	17	-15	1.95E-8	3.44E-5	> 1.00E-4	
Melanoma																
LOX IMVI	0.315	2.097	1.895	0.998	0.753	0.632	0.189	89	38	25	18	-40	5.86E-8	2.03E-5	> 1.00E-4	
MALME-3M	0.583	0.845	0.797	0.729	0.809	0.893	0.595	81	55	86	118	5	3.98E-5	> 1.00E-4	> 1.00E-4	
M14	0.417	1.605	1.297	0.494	0.494	0.492	0.366	74	6	6	6	-12	2.27E-8	2.19E-5	> 1.00E-4	
MDA-MB-435	0.513	2.456	0.873	0.254	0.296	0.361	0.463	19	-50	-42	-30	-10	< 1.00E-8	1.86E-8	.	
SK-MEL-2	1.188	2.015	1.917	1.208	1.423	1.261	0.796	88	2	28	9	-33	2.79E-8	1.62E-5	> 1.00E-4	
SK-MEL-28	0.511	1.271	0.991	0.874	0.895	0.788	0.573	63	48	51	36	8	.	> 1.00E-4	> 1.00E-4	
SK-MEL-5	0.934	3.282	2.928	1.126	0.912	0.508	0.048	85	8	-2	-46	-95	2.85E-8	5.92E-7	1.23E-5	
UACC-257	0.922	2.122	1.812	1.613	1.547	1.509	0.973	74	58	52	49	4	4.45E-6	> 1.00E-4	> 1.00E-4	
UACC-62	0.673	2.709	1.669	1.116	1.087	1.062	0.763	49	22	20	19	4	< 1.00E-8	> 1.00E-4	> 1.00E-4	
Ovarian Cancer																
IGROV1	0.579	1.897	1.681	1.231	1.035	1.051	0.918	84	49	35	36	26	9.65E-8	> 1.00E-4	> 1.00E-4	
OVCAR-3	0.441	1.529	1.355	0.570	0.536	0.579	0.437	84	12	9	13	-1	2.96E-8	8.42E-5	> 1.00E-4	
OVCAR-5	0.518	1.216	1.096	0.727	0.655	0.633	0.506	83	30	20	16	-2	4.18E-8	7.52E-5	> 1.00E-4	
OVCAR-8	0.398	1.795	1.747	0.775	0.521	0.538	0.365	97	27	9	10	-8	4.67E-8	3.49E-5	> 1.00E-4	
NCI/ADR-RES	0.489	1.585	1.179	0.598	0.596	0.563	0.451	63	10	10	7	-8	1.75E-8	2.88E-5	> 1.00E-4	
SK-OV-3	0.803	1.425	1.315	0.759	0.634	0.553	0.633	82	-6	-21	-31	-21	2.33E-8	8.65E-8	> 1.00E-4	
Renal Cancer																
786-0	0.608	2.261	2.032	1.271	1.206	0.783	0.545	86	40	36	11	-10	6.09E-8	3.19E-5	> 1.00E-4	
A498	1.580	2.281	2.054	1.483	1.466	1.542	1.411	68	-6	-7	-2	-11	1.73E-8	8.25E-8	> 1.00E-4	
ACHN	0.336	1.263	1.088	0.781	0.599	0.448	0.302	81	48	28	12	-10	8.69E-8	3.47E-5	> 1.00E-4	
CAKI-1	0.654	2.944	2.587	1.316	1.412	1.163	0.905	84	29	33	22	11	4.17E-8	> 1.00E-4	> 1.00E-4	
RXF 393	1.029	1.579	1.479	0.889	1.033	1.108	0.815	82	-14	1	14	-21	2.15E-8	.	> 1.00E-4	
SN12C	0.801	2.635	2.534	1.639	1.488	1.217	0.835	94	46	37	23	2	8.16E-8	> 1.00E-4	> 1.00E-4	
TK-10	1.211	2.311	2.294	1.875	1.975	1.783	1.327	98	60	69	52	11	1.12E-5	> 1.00E-4	> 1.00E-4	
UO-31	0.769	2.010	1.799	1.408	1.389	1.233	0.776	83	51	50	37	1	8.73E-7	> 1.00E-4	> 1.00E-4	
Prostate Cancer																
PC-3	0.649	2.112	1.862	1.044	1.021	0.936	0.762	83	27	25	20	8	3.88E-8	> 1.00E-4	> 1.00E-4	
DU-145	0.404	1.541	1.607	0.790	0.711	0.645	0.504	106	34	27	21	9	5.97E-8	> 1.00E-4	> 1.00E-4	
Breast Cancer																
MCF7	0.762	2.966	2.494	1.218	1.157	1.016	0.802	79	21	18	12	2	3.12E-8	> 1.00E-4	> 1.00E-4	
MDA-MB-231/ATCC	0.581	1.292	1.226	0.814	0.607	0.483	0.503	91	33	4	-17	-13	5.04E-8	1.51E-6	> 1.00E-4	
HS 578T	1.496	2.508	2.338	1.702	1.596	1.608	1.331	83	20	10	11	-11	3.37E-8	3.16E-5	> 1.00E-4	
BT-549	0.679	1.583	1.346	0.994	0.891	0.764	0.603	74	35	23	9	-11	4.07E-8	2.85E-5	> 1.00E-4	
T-47D	0.859	1.706	1.531	1.024	1.308	1.319	0.711	79	19	53	54	-17	.	5.74E-5	> 1.00E-4	
MDA-MB-468	0.730	1.351	1.267	0.665	0.708	0.594	0.431	86	-9	-3	-19	-41	2.41E-8	8.06E-8	> 1.00E-4	

Mean Graphs

Report Date :February 05, 2014

Test Date :November 26, 2013

