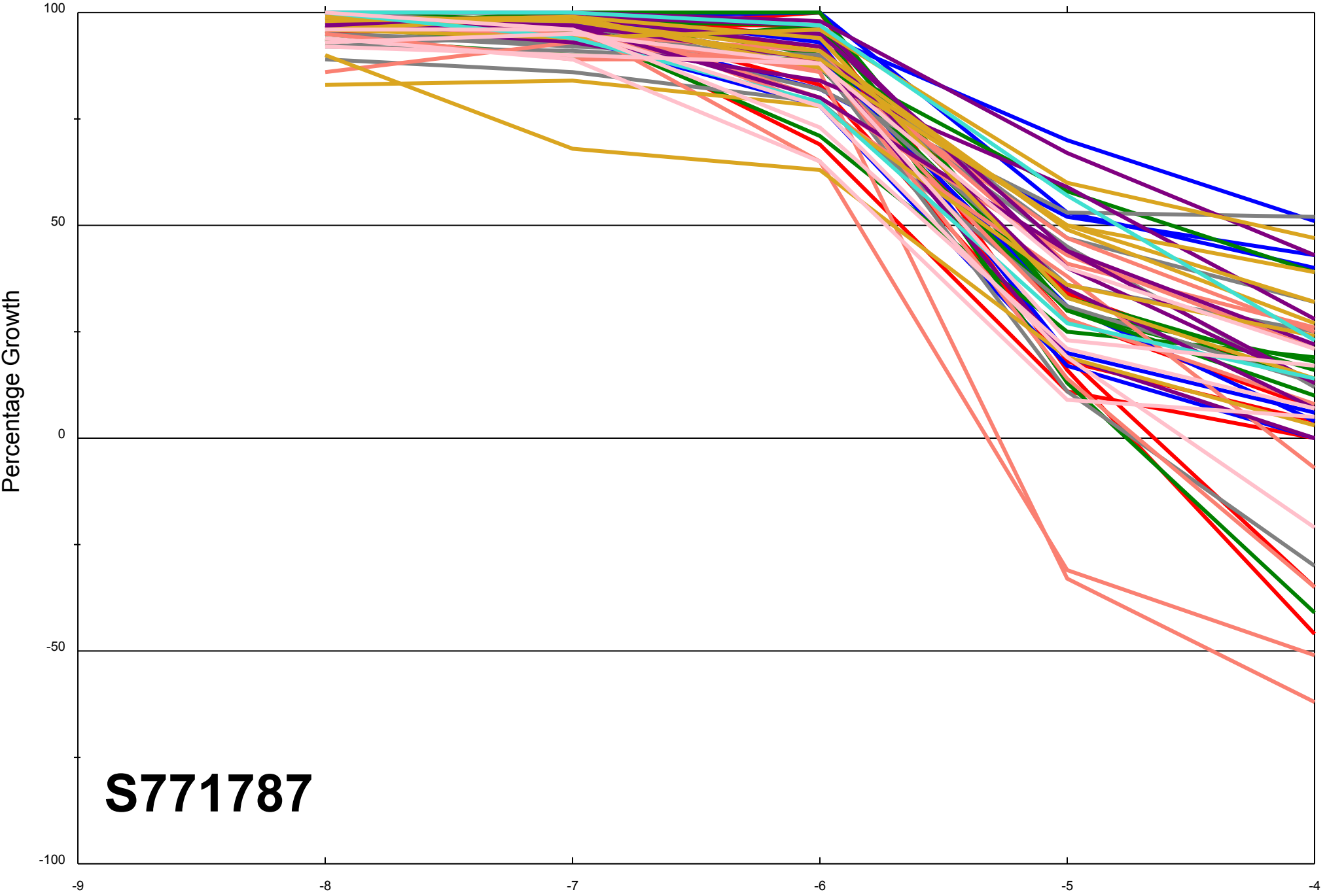


Dose Response Curves

Report Date:November 13, 2013

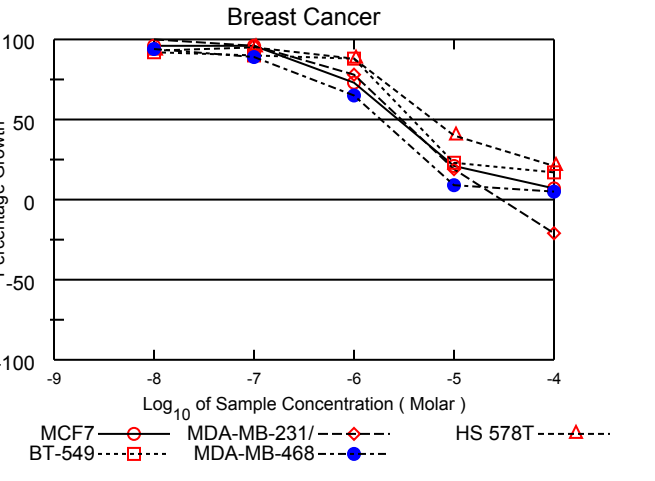
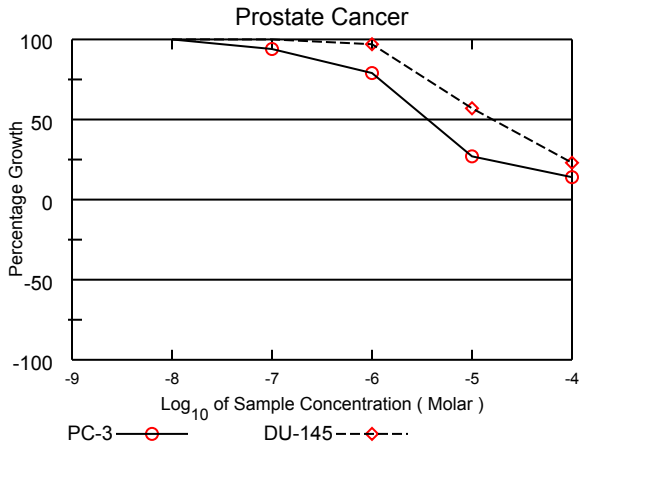
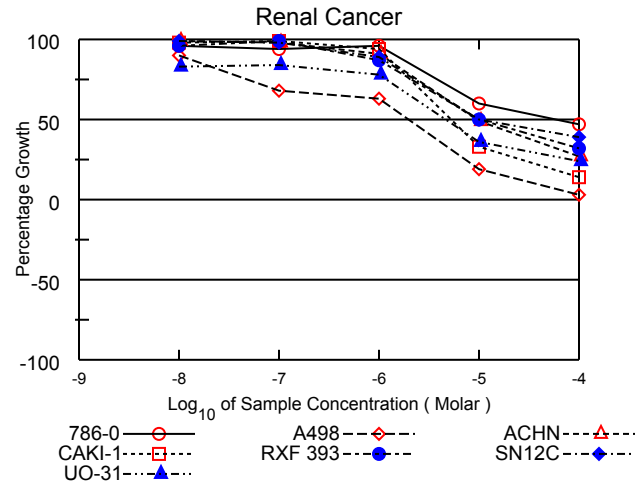
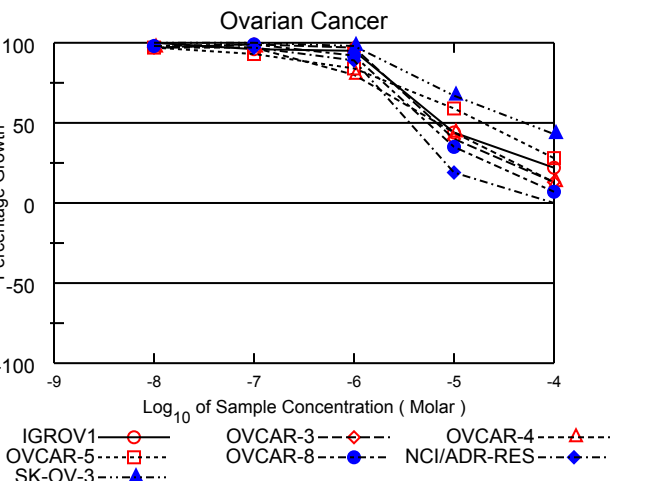
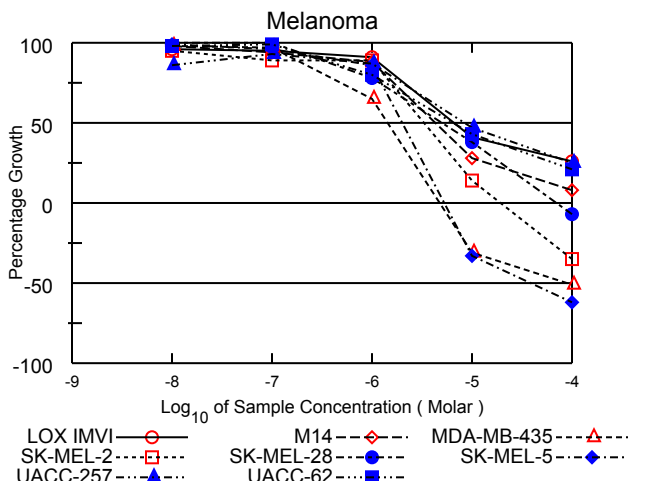
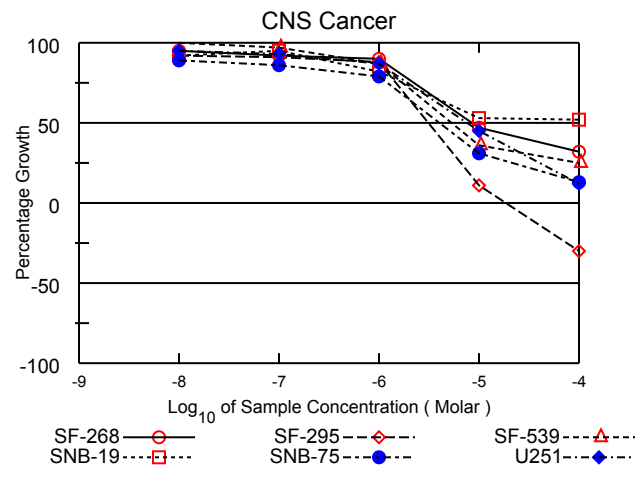
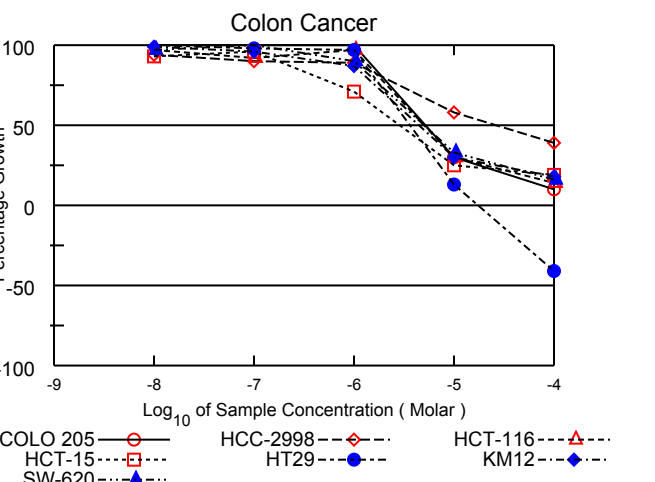
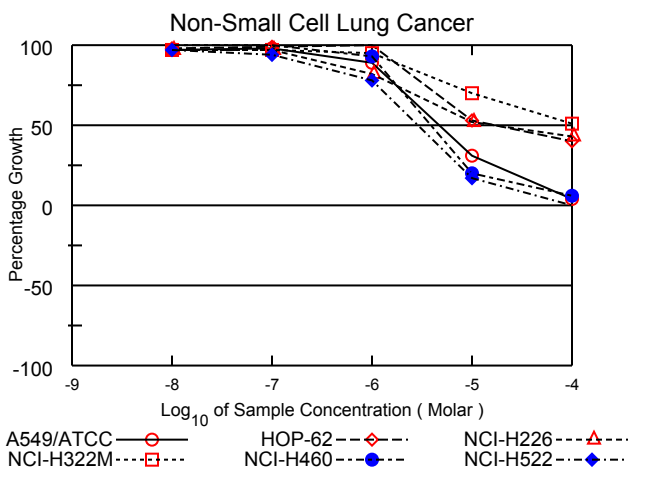
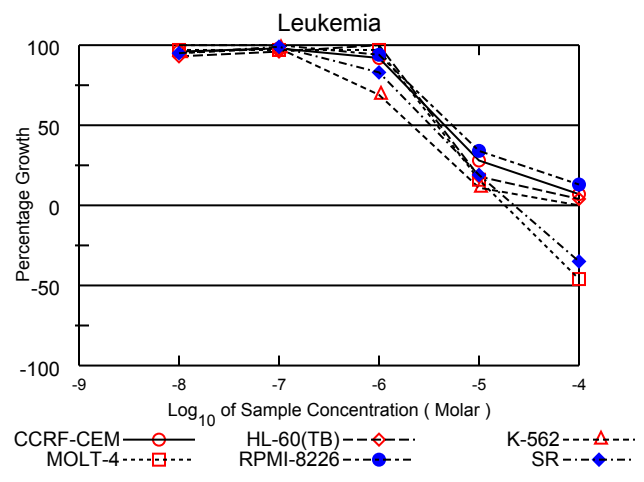
Test Date:April 08, 2013

All Cell Lines



S771787

Log₁₀ of Sample Concentration (Molar)



National Cancer Institute Developmental Therapeutics Program In-Vitro Testing Results

NSC : 771787 / 1	Experiment ID : 1304NS55	Test Type : 08	Units : Molar
Report Date : November 13, 2013	Test Date : April 08, 2013	QNS :	MC :
COMI : A4497/0192242 (124121)	Stain Reagent : SRB Dual-Pass Related	SSPL : 0YAR	

Panel/Cell Line	Log10 Concentration												GI50	TGI	LC50
	Time Zero	Ctrl	-8.0	-7.0	-6.0	-5.0	-4.0	-8.0	-7.0	-6.0	-5.0	-4.0			
Leukemia															
CCRF-CEM	0.520	2.932	2.843	2.874	2.736	1.196	0.693	96	98	92	28	7	4.53E-6	> 1.00E-4	> 1.00E-4
HL-60(TB)	1.055	2.996	2.861	2.925	3.026	1.405	1.133	93	96	102	18	4	4.14E-6	> 1.00E-4	> 1.00E-4
K-562	0.205	1.747	1.663	1.717	1.262	0.376	0.209	95	98	69	11	.	2.10E-6	> 1.00E-4	> 1.00E-4
MOLT-4	0.758	2.627	2.563	2.565	2.569	1.053	0.407	97	97	97	16	-46	3.78E-6	1.80E-5	> 1.00E-4
RPMI-8226	0.779	2.759	2.801	2.794	2.647	1.454	1.042	102	102	94	34	13	5.44E-6	> 1.00E-4	> 1.00E-4
SR	0.524	2.512	2.419	2.490	2.165	0.906	0.343	95	99	83	19	-35	3.26E-6	2.27E-5	> 1.00E-4
Non-Small Cell Lung Cancer															
A549/ATCC	0.519	2.045	2.007	2.009	1.874	0.994	0.586	97	98	89	31	4	4.71E-6	> 1.00E-4	> 1.00E-4
HOP-62	0.689	2.106	2.072	2.094	2.113	1.442	1.261	98	99	100	53	40	1.76E-5	> 1.00E-4	> 1.00E-4
NCI-H226	1.253	2.465	2.432	2.434	2.242	1.889	1.770	97	97	82	52	43	1.79E-5	> 1.00E-4	> 1.00E-4
NCI-H322M	0.599	1.597	1.564	1.571	1.549	1.294	1.107	97	97	95	70	51	> 1.00E-4	> 1.00E-4	> 1.00E-4
NCI-H460	0.340	3.062	3.055	3.086	2.863	0.891	0.507	100	101	93	20	6	3.88E-6	> 1.00E-4	> 1.00E-4
NCI-H522	1.247	2.384	2.352	2.320	2.134	1.438	1.243	97	94	78	17	.	2.86E-6	9.58E-5	> 1.00E-4
Colon Cancer															
COLO 205	0.470	1.958	1.966	1.990	2.005	0.919	0.624	101	102	103	30	10	5.35E-6	> 1.00E-4	> 1.00E-4
HCC-2998	0.528	1.758	1.690	1.632	1.620	1.245	1.002	94	90	89	58	39	2.62E-5	> 1.00E-4	> 1.00E-4
HCT-116	0.264	2.432	2.375	2.259	2.369	0.920	0.561	97	92	97	30	14	5.06E-6	> 1.00E-4	> 1.00E-4
HCT-15	0.331	2.508	2.356	2.418	1.869	0.868	0.738	93	96	71	25	19	2.81E-6	> 1.00E-4	> 1.00E-4
HT29	0.260	1.394	1.401	1.368	1.364	0.409	0.153	101	98	97	13	-41	3.65E-6	1.74E-5	> 1.00E-4
KM12	0.665	2.877	2.855	2.791	2.592	1.321	1.065	99	96	87	30	18	4.42E-6	> 1.00E-4	> 1.00E-4
SW-620	0.408	2.660	2.584	2.664	2.434	1.157	0.768	97	100	90	33	16	5.07E-6	> 1.00E-4	> 1.00E-4
CNS Cancer															
SF-268	0.612	2.075	2.007	1.964	1.928	1.293	1.078	95	92	90	47	32	8.33E-6	> 1.00E-4	> 1.00E-4
SF-295	0.899	2.624	2.485	2.461	2.408	1.081	0.631	92	91	88	11	-30	3.07E-6	1.82E-5	> 1.00E-4
SF-539	0.979	2.740	2.753	2.692	2.512	1.614	1.416	101	97	87	36	25	5.32E-6	> 1.00E-4	> 1.00E-4
SNB-19	0.755	2.129	2.019	2.065	1.884	1.486	1.471	92	95	82	53	52	> 1.00E-4	> 1.00E-4	> 1.00E-4
SNB-75	0.959	1.769	1.683	1.652	1.602	1.211	1.063	89	86	79	31	13	4.06E-6	> 1.00E-4	> 1.00E-4
U251	0.585	2.053	1.977	1.954	1.866	1.252	0.768	95	93	87	45	12	7.78E-6	> 1.00E-4	> 1.00E-4
Melanoma															
LOX IMVI	0.658	3.116	3.025	2.983	2.905	1.676	1.291	96	95	91	41	26	6.73E-6	> 1.00E-4	> 1.00E-4
M14	0.546	2.208	2.181	2.111	2.009	1.007	0.682	98	94	88	28	8	4.27E-6	> 1.00E-4	> 1.00E-4
MDA-MB-435	0.544	2.287	2.255	2.229	1.676	0.376	0.266	98	97	65	-31	-51	1.43E-6	4.76E-6	8.82E-5
SK-MEL-2	0.753	1.235	1.213	1.182	1.181	0.819	0.492	95	89	89	14	-35	3.29E-6	1.92E-5	> 1.00E-4
SK-MEL-28	0.592	1.477	1.493	1.518	1.287	0.925	0.552	102	105	78	38	-7	4.98E-6	7.04E-5	> 1.00E-4
SK-MEL-5	0.929	2.866	2.856	2.793	2.597	0.622	0.355	99	96	86	-33	-62	2.01E-6	5.28E-6	3.88E-5
UACC-257	0.905	1.677	1.571	1.627	1.579	1.270	1.097	86	93	87	47	25	8.51E-6	> 1.00E-4	> 1.00E-4
UACC-62	0.902	2.694	2.652	2.670	2.338	1.672	1.275	98	99	80	43	21	6.47E-6	> 1.00E-4	> 1.00E-4
Ovarian Cancer															
IGROV1	0.486	1.683	1.689	1.641	1.622	1.017	0.748	100	96	95	44	22	7.72E-6	> 1.00E-4	> 1.00E-4
OVCAR-3	0.705	1.961	1.927	1.943	1.925	1.213	0.866	97	99	97	40	13	6.78E-6	> 1.00E-4	> 1.00E-4
OVCAR-4	0.559	1.136	1.119	1.116	1.023	0.811	0.632	97	97	80	44	13	6.75E-6	> 1.00E-4	> 1.00E-4
OVCAR-5	0.593	1.405	1.379	1.345	1.274	1.075	0.819	97	93	84	59	28	1.98E-5	> 1.00E-4	> 1.00E-4
OVCAR-8	0.588	2.129	2.104	2.117	2.013	1.135	0.701	98	99	92	35	7	5.56E-6	> 1.00E-4	> 1.00E-4
NCI/ADR-RES	0.543	2.073	2.044	2.033	1.912	0.830	0.547	98	97	89	19	.	3.61E-6	> 1.00E-4	> 1.00E-4
SK-OV-3	0.584	1.421	1.426	1.429	1.407	1.144	0.946	101	101	98	67	43	5.19E-5	> 1.00E-4	> 1.00E-4
Renal Cancer															
786-0	0.584	2.577	2.488	2.448	2.502	1.784	1.528	96	94	96	60	47	6.24E-5	> 1.00E-4	> 1.00E-4
A498	1.700	2.568	2.480	2.289	2.251	1.863	1.723	90	68	63	19	3	2.00E-6	> 1.00E-4	> 1.00E-4
ACHN	0.411	1.879	1.868	1.850	1.741	1.125	0.807	99	98	91	49	27	9.26E-6	> 1.00E-4	> 1.00E-4
CAKI-1	0.648	2.554	2.516	2.534	2.445	1.278	0.920	98	99	94	33	14	5.29E-6	> 1.00E-4	> 1.00E-4
RXF 393	0.948	1.776	1.741	1.765	1.672	1.362	1.215	96	99	87	50	32	9.98E-6	> 1.00E-4	> 1.00E-4
SN12C	0.643	2.599	2.588	2.566	2.393	1.630	1.413	99	98	89	50	39	1.10E-5	> 1.00E-4	> 1.00E-4
UO-31	0.655	1.832	1.632	1.648	1.572	1.074	0.936	83	84	78	36	24	4.56E-6	> 1.00E-4	> 1.00E-4
Prostate Cancer															
PC-3	0.698	2.338	2.354	2.233	1.998	1.144	0.925	101	94	79	27	14	3.65E-6	> 1.00E-4	> 1.00E-4
DU-145	0.460	1.707	1.747	1.704	1.669	1.168	0.753	103	100	97	57	23	1.60E-5	> 1.00E-4	> 1.00E-4
Breast Cancer															
MCF7	0.419	2.160	2.087	2.084	1.694	0.787	0.542	96	96	73	21	7	2.79E-6	> 1.00E-4	> 1.00E-4
MDA-MB-231/ATCC	0.681	1.479	1.491	1.451	1.300	0.832	0.536	102	96	78	19	-21	2.96E-6	2.96E-5	> 1.00E-4
HS 578T	1.268	2.209	2.140	2.159	2.093	1.649	1.465	93	95	88	40	21	6.27E-6	> 1.00E-4	> 1.00E-4
BT-549	1.240	2.398	2.304	2.283	2.253	1.508	1.441	92	90	88	23	17	3.82E-6	> 1.00E-4	> 1.00E-4
MDA-MB-468	0.767	1.629	1.579	1.531	1.331	0.842	0.808	94	89	65	9	5	1.87E-6	> 1.00E-4	> 1.00E-4

Mean Graphs

Report Date :November 13, 2013

Test Date :April 08, 2013

