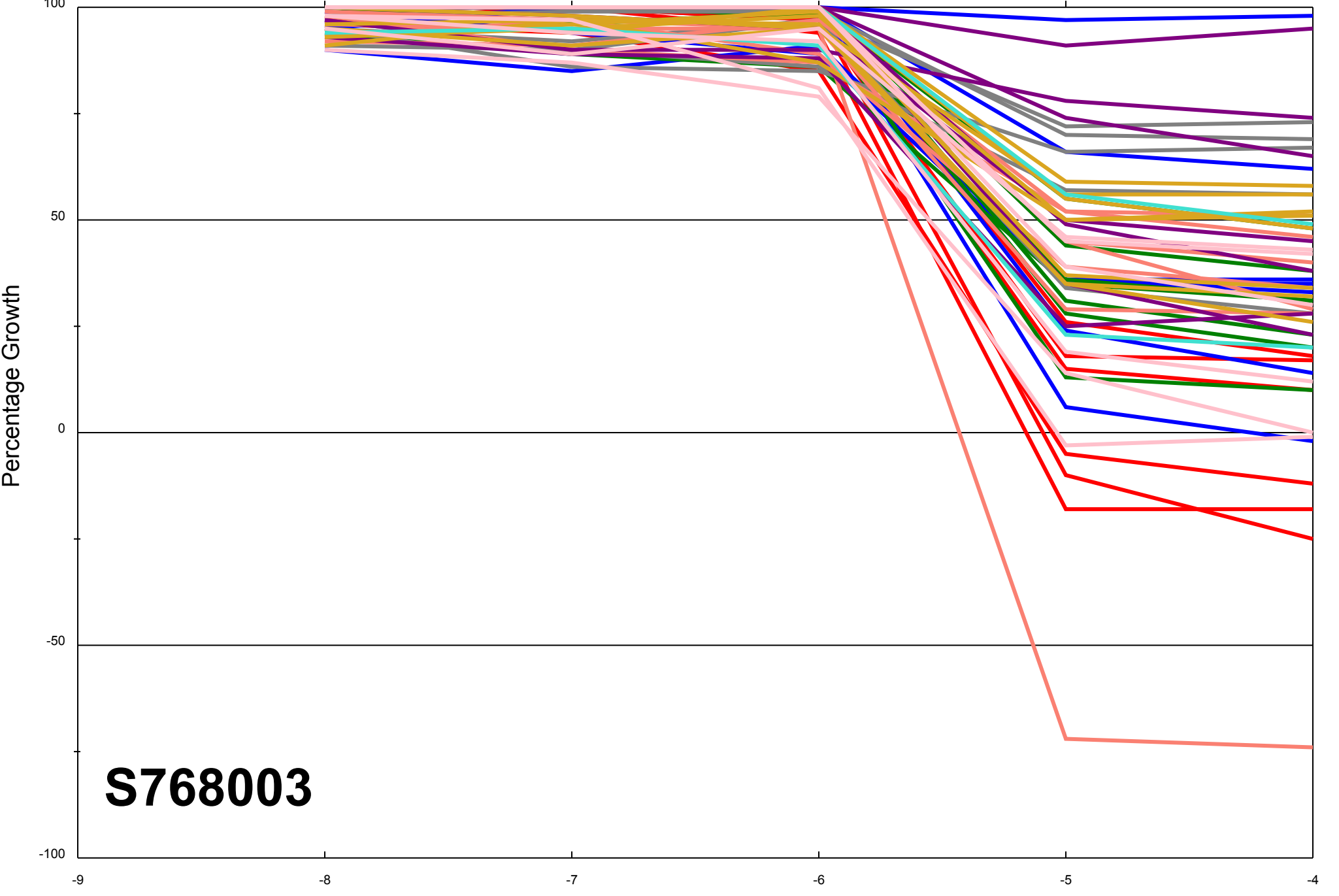


Dose Response Curves

Report Date: June 13, 2013

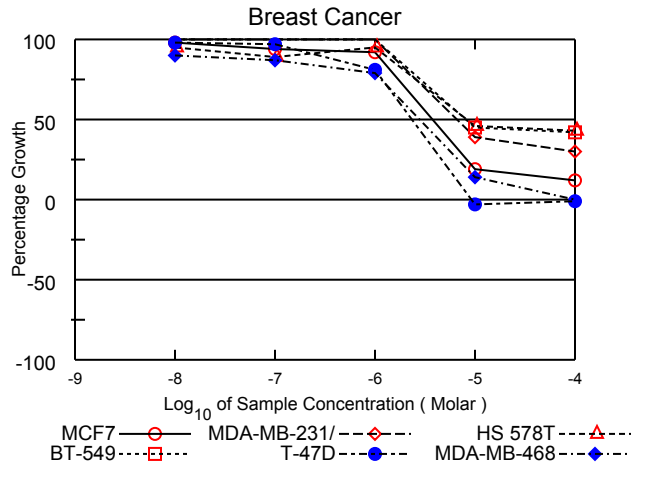
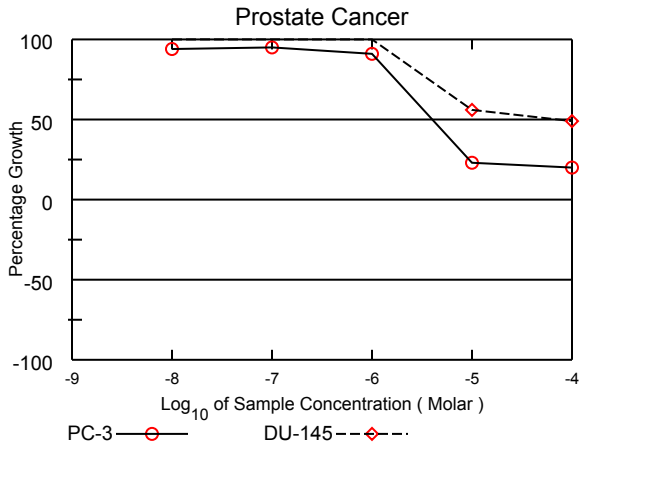
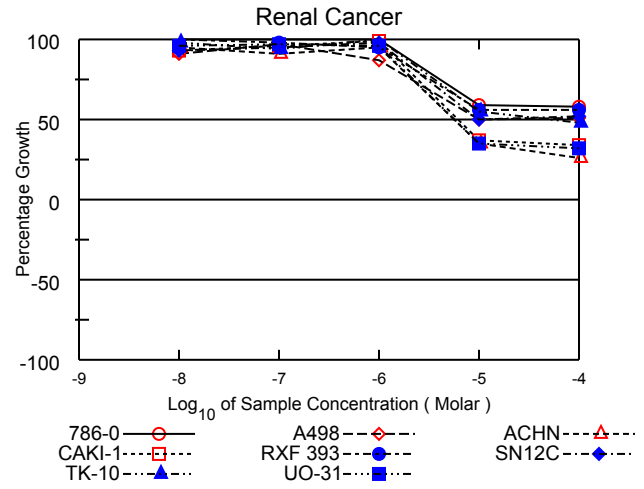
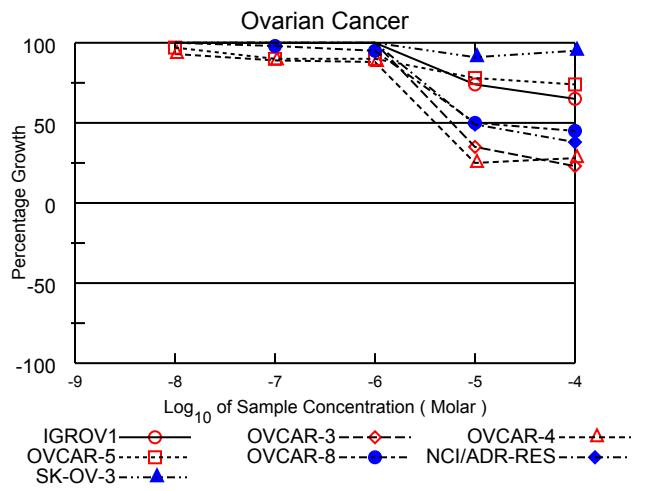
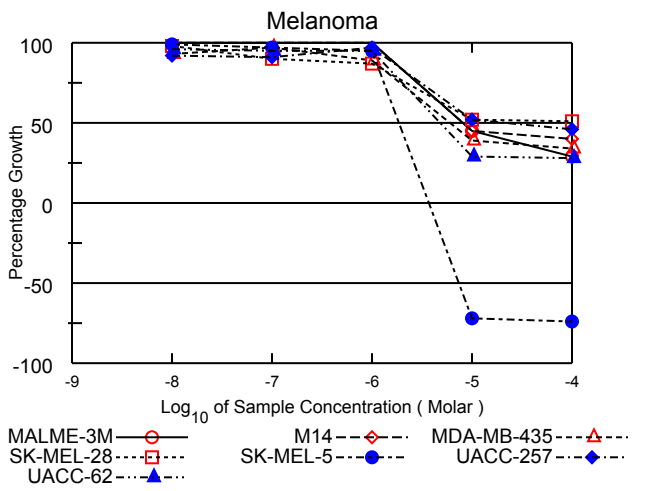
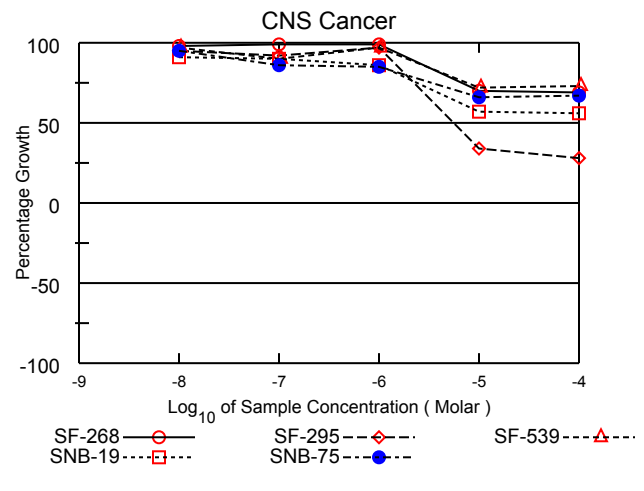
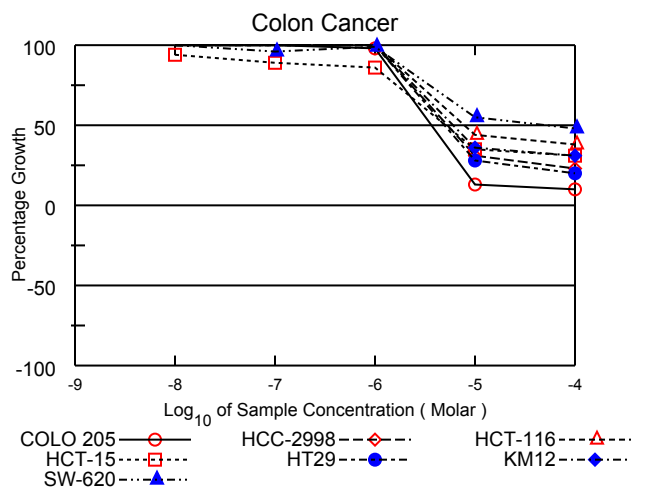
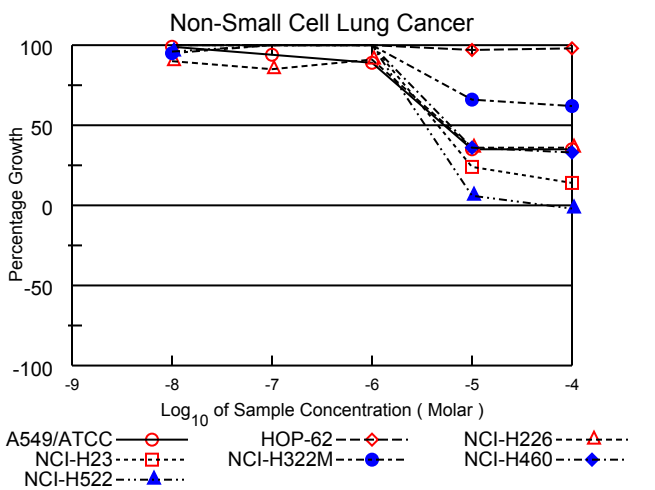
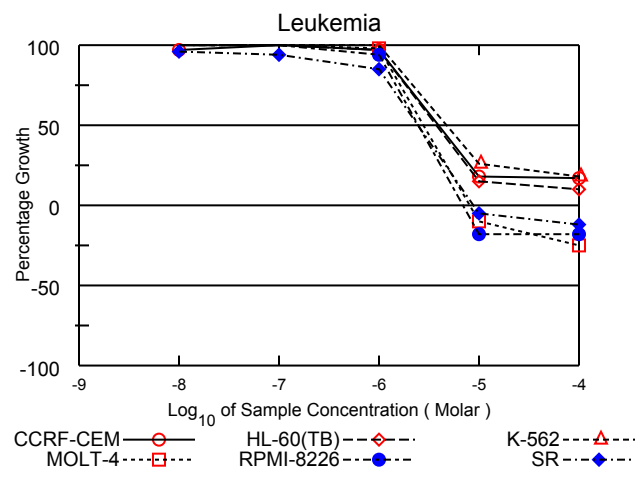
Test Date: March 11, 2013

All Cell Lines



S768003

Log₁₀ of Sample Concentration (Molar)



National Cancer Institute Developmental Therapeutics Program
In-Vitro Testing Results

NSC : 768003 / 1	Experiment ID : 1303NS37	Test Type : 08	Units : Molar
Report Date : June 13, 2013	Test Date : March 11, 2013	QNS :	MC :
COMI : A1803/0076192 (122541)	Stain Reagent : SRB Dual-Pass Related	SSPL : 0YAR	

Panel/Cell Line	Time Zero	Log10 Concentration											GI50	TGI	LC50	
		Ctrl	-8.0	-7.0	-6.0	-5.0	-4.0	-8.0	-7.0	-6.0	-5.0	-4.0				
Leukemia																
CCRF-CEM	0.402	1.462	1.429	1.502	1.432	0.591	0.582	97	104	97	18	17	3.93E-6	> 1.00E-4	> 1.00E-4	
HL-60(TB)	1.031	3.139	3.164	3.161	3.079	1.345	1.236	101	101	97	15	10	3.74E-6	> 1.00E-4	> 1.00E-4	
K-562	0.366	2.329	2.424	2.592	2.447	0.879	0.723	105	113	106	26	18	5.02E-6	> 1.00E-4	> 1.00E-4	
MOLT-4	1.017	2.865	2.934	3.058	2.829	0.920	0.760	104	110	98	-10	-25	2.80E-6	8.15E-6	> 1.00E-4	
RPMI-8226	1.220	2.917	2.950	2.966	2.822	1.005	1.003	102	103	94	-18	-18	2.49E-6	6.96E-6	> 1.00E-4	
SR	0.675	2.599	2.530	2.480	2.304	0.640	0.592	96	94	85	-5	-12	2.43E-6	8.74E-6	> 1.00E-4	
Non-Small Cell Lung Cancer																
A549/ATCC	0.376	1.948	1.925	1.853	1.777	0.929	0.923	99	94	89	35	35	5.31E-6	> 1.00E-4	> 1.00E-4	
HOP-62	0.394	0.978	1.024	1.031	0.976	0.959	0.966	108	109	100	97	98	> 1.00E-4	> 1.00E-4	> 1.00E-4	
NCI-H226	1.075	2.462	2.328	2.257	2.331	1.569	1.572	90	85	91	36	36	5.47E-6	> 1.00E-4	> 1.00E-4	
NCI-H23	0.853	2.196	2.238	2.282	2.256	1.171	1.042	103	106	104	24	14	4.72E-6	> 1.00E-4	> 1.00E-4	
NCI-H322M	0.800	1.689	1.649	1.728	1.707	1.383	1.352	95	104	102	66	62	> 1.00E-4	> 1.00E-4	> 1.00E-4	
NCI-H460	0.220	2.131	2.204	2.137	2.128	0.902	0.859	104	100	100	36	33	5.98E-6	> 1.00E-4	> 1.00E-4	
NCI-H522	1.032	2.092	2.049	2.151	2.093	1.099	1.013	96	106	100	6	-2	3.42E-6	5.93E-5	> 1.00E-4	
Colon Cancer																
COLO 205	0.616	2.372	2.440	2.468	2.331	0.851	0.800	104	105	98	13	10	3.68E-6	> 1.00E-4	> 1.00E-4	
HCC-2998	1.089	2.626	2.648	2.755	2.860	1.567	1.440	101	108	115	31	23	5.96E-6	> 1.00E-4	> 1.00E-4	
HCT-116	0.235	1.585	1.750	1.658	1.663	0.832	0.753	112	105	106	44	38	8.06E-6	> 1.00E-4	> 1.00E-4	
HCT-15	0.325	2.024	1.924	1.842	1.785	0.916	0.860	94	89	86	35	31	5.04E-6	> 1.00E-4	> 1.00E-4	
HT29	0.259	1.449	1.502	1.541	1.458	0.591	0.503	104	108	101	28	20	4.97E-6	> 1.00E-4	> 1.00E-4	
KM12	0.498	2.172	2.256	2.298	2.257	1.094	1.016	105	108	105	36	31	6.20E-6	> 1.00E-4	> 1.00E-4	
SW-620	0.357	2.329	2.324	2.249	2.309	1.437	1.309	100	96	99	55	48	5.41E-5	> 1.00E-4	> 1.00E-4	
CNS Cancer																
SF-268	0.551	1.756	1.730	1.748	1.743	1.392	1.386	98	99	99	70	69	> 1.00E-4	> 1.00E-4	> 1.00E-4	
SF-295	1.121	2.977	2.887	2.831	2.919	1.745	1.633	95	92	97	34	28	5.51E-6	> 1.00E-4	> 1.00E-4	
SF-539	0.846	2.493	2.439	2.333	2.448	2.039	2.050	97	90	97	72	73	> 1.00E-4	> 1.00E-4	> 1.00E-4	
SNB-19	1.249	2.369	2.266	2.258	2.208	1.892	1.877	91	90	86	57	56	> 1.00E-4	> 1.00E-4	> 1.00E-4	
SNB-75	0.760	1.467	1.431	1.369	1.364	1.229	1.235	95	86	85	66	67	> 1.00E-4	> 1.00E-4	> 1.00E-4	
Melanoma																
MALME-3M	0.807	1.617	1.627	1.641	1.706	1.169	1.041	101	103	111	45	29	8.31E-6	> 1.00E-4	> 1.00E-4	
M14	0.449	1.527	1.599	1.594	1.575	0.939	0.885	107	106	104	45	40	8.37E-6	> 1.00E-4	> 1.00E-4	
MDA-MB-435	0.563	2.174	2.065	2.121	1.992	1.189	1.109	93	97	89	39	34	5.98E-6	> 1.00E-4	> 1.00E-4	
SK-MEL-28	0.493	1.468	1.449	1.375	1.337	1.001	0.993	98	90	87	52	51	> 1.00E-4	> 1.00E-4	> 1.00E-4	
SK-MEL-5	1.002	3.262	3.233	3.200	3.140	0.281	0.259	99	97	95	-72	-74	1.85E-6	3.70E-6	7.38E-6	
UACC-257	0.860	1.882	1.805	1.795	1.854	1.395	1.331	92	91	97	52	46	2.38E-5	> 1.00E-4	> 1.00E-4	
UACC-62	0.834	2.437	2.378	2.356	2.355	1.293	1.284	96	95	95	29	28	4.75E-6	> 1.00E-4	> 1.00E-4	
Ovarian Cancer																
IGROV1	0.563	1.679	1.726	1.783	1.787	1.393	1.285	104	109	110	74	65	> 1.00E-4	> 1.00E-4	> 1.00E-4	
OVCAR-3	0.478	1.464	1.539	1.558	1.483	0.822	0.701	108	110	102	35	23	5.95E-6	> 1.00E-4	> 1.00E-4	
OVCAR-4	0.716	1.285	1.244	1.223	1.218	0.859	0.876	93	89	88	25	28	4.03E-6	> 1.00E-4	> 1.00E-4	
OVCAR-5	0.545	1.384	1.363	1.296	1.304	1.201	1.162	97	90	90	78	74	> 1.00E-4	> 1.00E-4	> 1.00E-4	
OVCAR-8	0.550	2.042	2.057	2.017	1.973	1.289	1.127	101	98	95	50	45	9.77E-6	> 1.00E-4	> 1.00E-4	
NCI/ADR-RES	0.625	1.783	1.817	1.832	1.828	1.198	1.070	103	104	104	49	38	9.76E-6	> 1.00E-4	> 1.00E-4	
SK-OV-3	0.579	1.102	1.126	1.120	1.215	1.057	1.074	105	103	122	91	95	> 1.00E-4	> 1.00E-4	> 1.00E-4	
Renal Cancer																
786-0	0.659	2.265	2.404	2.360	2.371	1.599	1.591	109	106	107	59	58	> 1.00E-4	> 1.00E-4	> 1.00E-4	
A498	1.311	1.964	1.906	1.946	1.876	1.638	1.643	91	97	87	50	51	> 1.00E-4	> 1.00E-4	> 1.00E-4	
ACHN	0.374	1.557	1.502	1.445	1.492	0.785	0.678	95	91	95	35	26	5.56E-6	> 1.00E-4	> 1.00E-4	
CAKI-1	0.823	2.836	2.698	2.756	2.815	1.576	1.504	93	96	99	37	34	6.24E-6	> 1.00E-4	> 1.00E-4	
RXF 393	0.796	1.177	1.221	1.169	1.157	1.010	1.008	111	98	95	56	56	> 1.00E-4	> 1.00E-4	> 1.00E-4	
SN12C	0.735	2.330	2.225	2.248	2.305	1.539	1.571	93	95	98	50	52	> 1.00E-4	> 1.00E-4	> 1.00E-4	
TK-10	0.846	1.649	1.633	1.601	1.655	1.291	1.231	98	94	101	55	48	5.31E-5	> 1.00E-4	> 1.00E-4	
UO-31	0.543	1.697	1.656	1.660	1.648	0.951	0.912	96	97	96	35	32	5.72E-6	> 1.00E-4	> 1.00E-4	
Prostate Cancer																
PC-3	0.470	1.302	1.250	1.260	1.224	0.663	0.636	94	95	91	23	20	4.00E-6	> 1.00E-4	> 1.00E-4	
DU-145	0.404	1.413	1.480	1.493	1.474	0.966	0.896	107	108	106	56	49	6.55E-5	> 1.00E-4	> 1.00E-4	
Breast Cancer																
MCF7	0.170	0.989	0.970	0.938	0.922	0.328	0.267	98	94	92	19	12	3.77E-6	> 1.00E-4	> 1.00E-4	
MDA-MB-231/ATCC	0.651	1.361	1.380	1.364	1.406	0.926	0.867	103	100	106	39	30	6.82E-6	> 1.00E-4	> 1.00E-4	
HS 578T	1.254	2.108	2.063	2.016	2.065	1.648	1.625	95	89	95	46	43	8.33E-6	> 1.00E-4	> 1.00E-4	
BT-549	0.991	1.864	1.913	1.954	1.996	1.387	1.361	106	110	115	45	42	8.56E-6	> 1.00E-4	> 1.00E-4	
T-47D	0.577	1.288	1.272	1.266	1.156	0.561	0.572	98	97	81	-3	-1	2.36E-6	9.25E-6	> 1.00E-4	
MDA-MB-468	0.802	1.578	1.500	1.476	1.413	0.910	0.805	90	87	79	14	.	2.78E-6	> 1.00E-4	> 1.00E-4	

Mean Graphs

Report Date :June 13, 2013

Test Date :March 11, 2013

