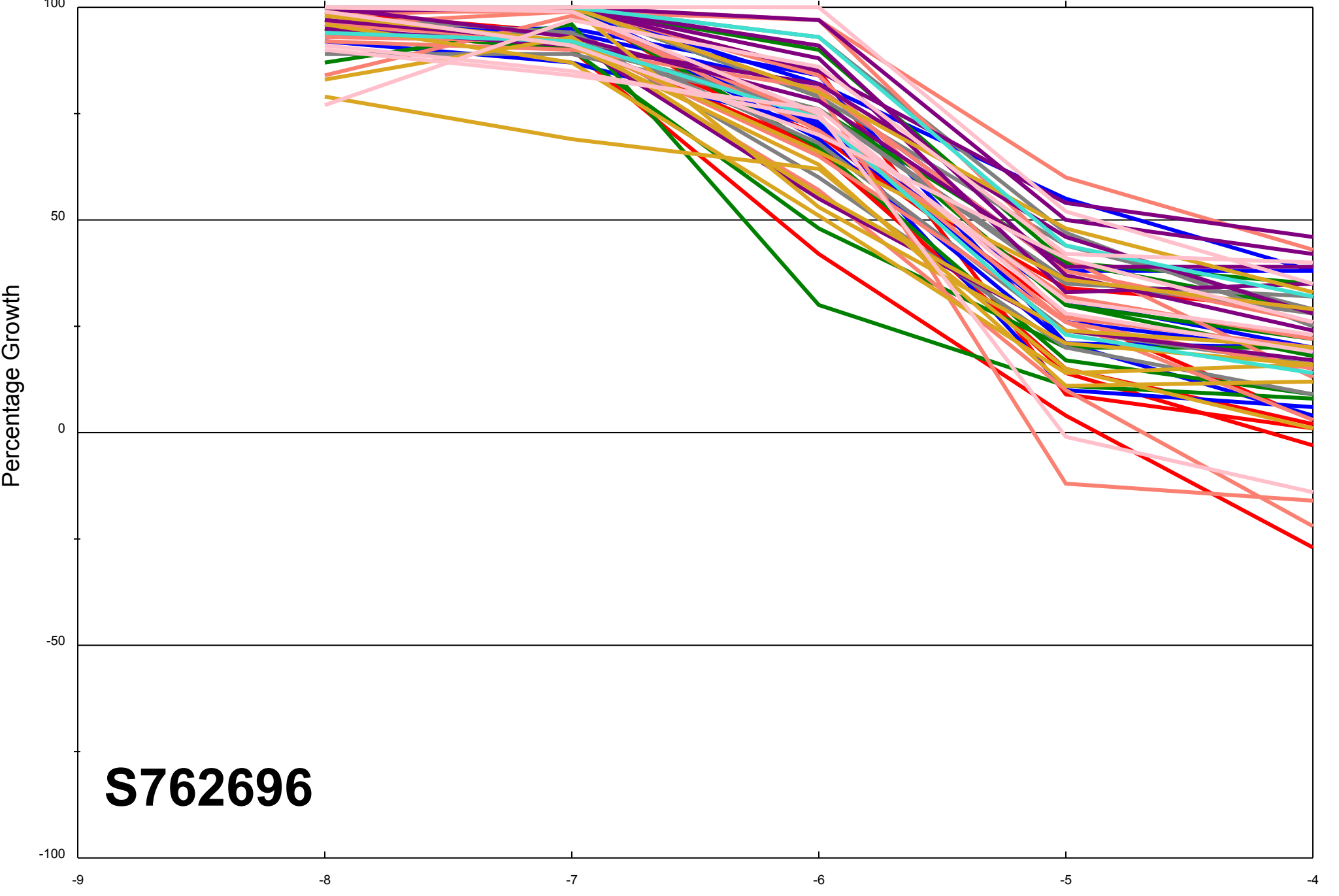


Dose Response Curves

Report Date:October 02, 2012

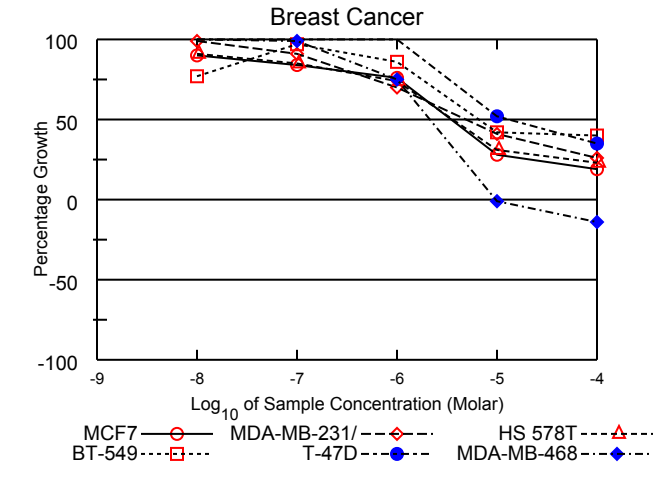
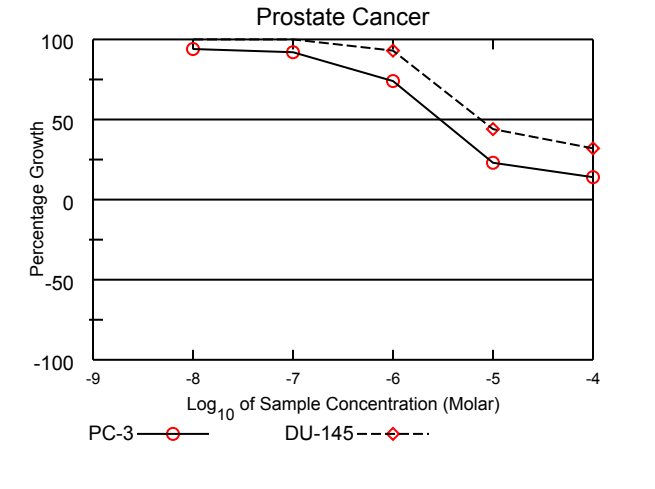
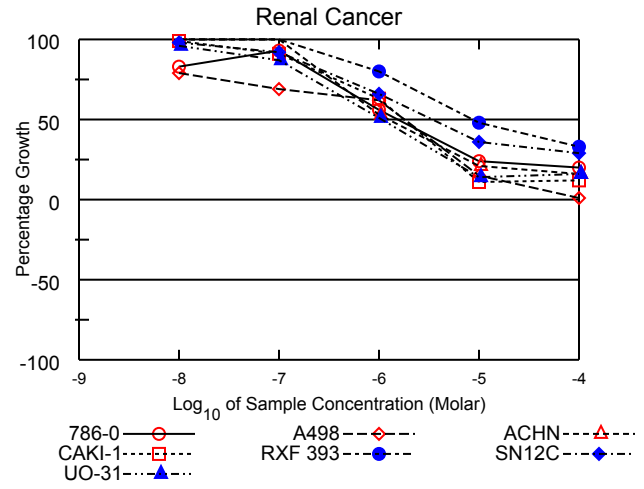
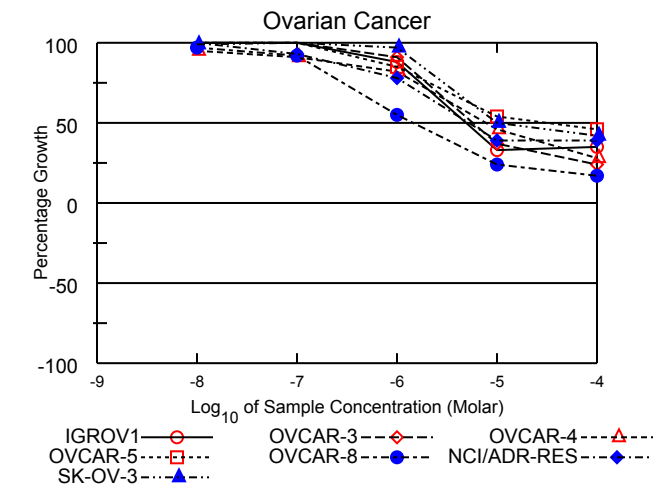
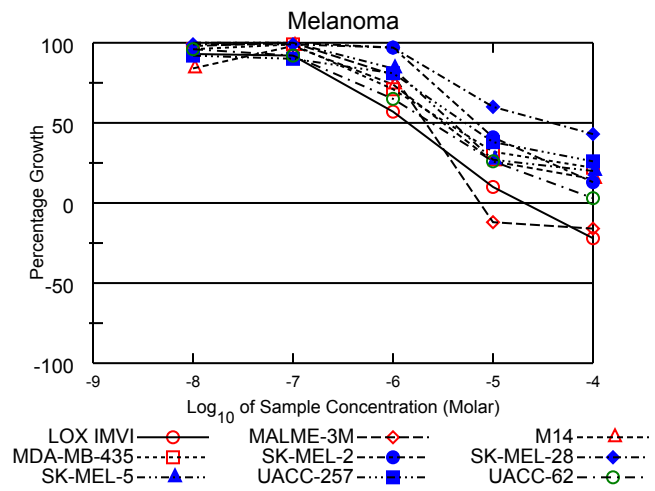
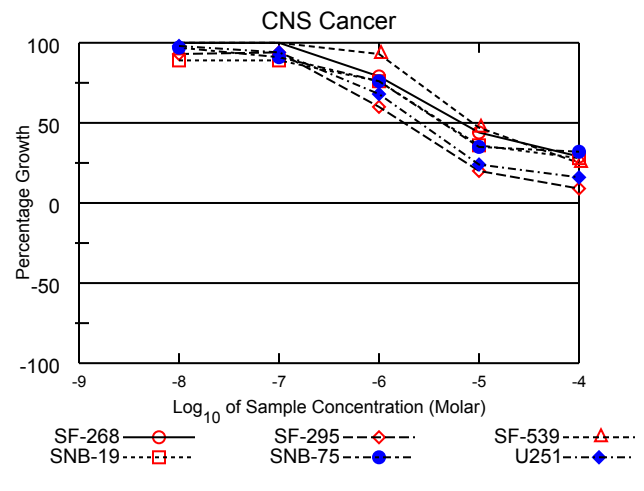
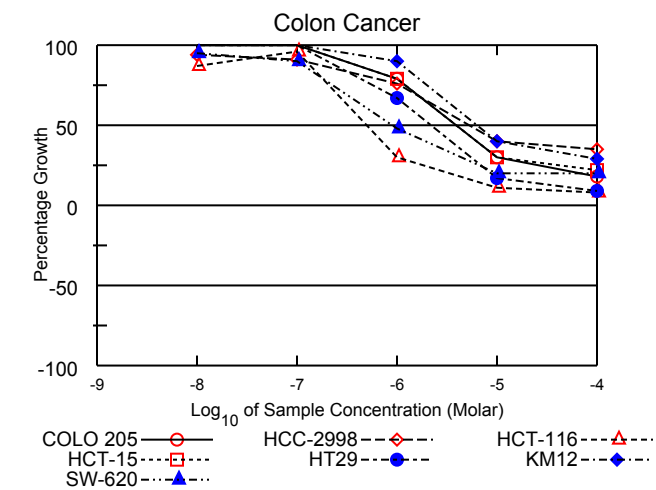
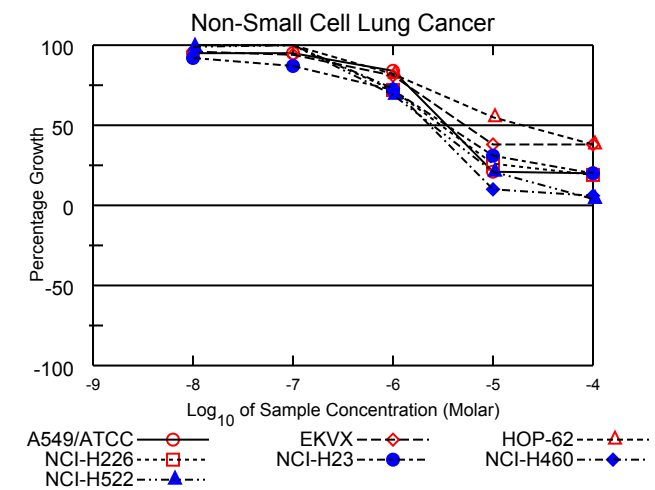
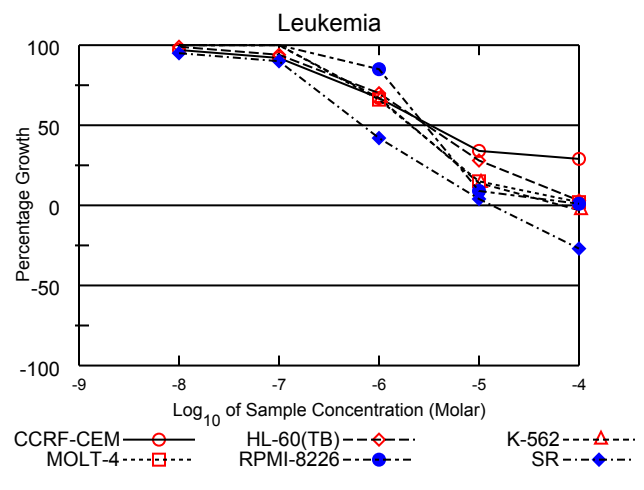
Test Date:January 09, 2012

All Cell Lines



S762696

Log₁₀ of Sample Concentration (Molar)



Mean Graphs

Report Date :October 02, 2012

Test Date :January 09, 2012

Panel/Cell Line	Log ₁₀ GI50	GI50	Log ₁₀ TGI	TGI	Log ₁₀ LC50	LC50
Leukemia						
CCRF-CEM	-5.48		> -4.00		> -4.00	
HL-60(TB)	-5.53		> -4.00		> -4.00	
K-562	-5.68		-4.19		> -4.00	
MOLT-4	-5.68		> -4.00		> -4.00	
RPMI-8226	-5.54		> -4.00		> -4.00	
SR	-6.16		-4.87		> -4.00	
Non-Small Cell Lung Cancer						
A549/ATCC	-5.46		> -4.00		> -4.00	
EKVX	-5.28		> -4.00		> -4.00	
HOP-62	-4.72		> -4.00		> -4.00	
NCI-H226	-5.52		> -4.00		> -4.00	
NCI-H23	-5.47		> -4.00		> -4.00	
NCI-H460	-5.64		> -4.00		> -4.00	
NCI-H522	-5.60		> -4.00		> -4.00	
Colon Cancer						
COLO 205	-5.41		> -4.00		> -4.00	
HCC-2998	-5.28		> -4.00		> -4.00	
HCT-116	-6.31		> -4.00		> -4.00	
HCT-15	-5.41		> -4.00		> -4.00	
HT29	-5.66		> -4.00		> -4.00	
KM12	-5.20		> -4.00		> -4.00	
SW-620	-6.06		> -4.00		> -4.00	
CNS Cancer						
SF-268	-5.17		> -4.00		> -4.00	
SF-295	-5.76		> -4.00		> -4.00	
SF-539	-5.06		> -4.00		> -4.00	
SNB-19	-5.35		> -4.00		> -4.00	
SNB-75	-5.36		> -4.00		> -4.00	
U251	-5.59		> -4.00		> -4.00	
Melanoma						
LOX IMVI	-5.84		-4.68		> -4.00	
MALME-3M	-5.67		-5.13		> -4.00	
M14	-5.50		> -4.00		> -4.00	
MDA-MB-435	-5.46		> -4.00		> -4.00	
SK-MEL-2	-5.16		> -4.00		> -4.00	
SK-MEL-28	-4.42		> -4.00		> -4.00	
SK-MEL-5	-5.40		> -4.00		> -4.00	
UACC-257	-5.27		> -4.00		> -4.00	
UACC-62	-5.61		> -4.00		> -4.00	
Ovarian Cancer						
IGROV1	-5.30		> -4.00		> -4.00	
OVCAR-3	-5.24		> -4.00		> -4.00	
OVCAR-4	-5.10		> -4.00		> -4.00	
OVCAR-5	-4.48		> -4.00		> -4.00	
OVCAR-8	-5.83		> -4.00		> -4.00	
NCI/ADR-RES	-5.28		> -4.00		> -4.00	
SK-OV-3	-5.01		> -4.00		> -4.00	
Renal Cancer						
786-0	-5.81		> -4.00		> -4.00	
A498	-5.75		> -4.00		> -4.00	
ACHN	-5.92		> -4.00		> -4.00	
CAKI-1	-5.75		> -4.00		> -4.00	
RXF 393	-5.06		> -4.00		> -4.00	
SN12C	-5.46		> -4.00		> -4.00	
UO-31	-5.96		> -4.00		> -4.00	
Prostate Cancer						
PC-3	-5.52		> -4.00		> -4.00	
DU-145	-5.12		> -4.00		> -4.00	
Breast Cancer						
MCF7	-5.46		> -4.00		> -4.00	
MDA-MB-231/ATCC	-5.32		> -4.00		> -4.00	
HS 578T	-5.43		> -4.00		> -4.00	
BT-549	-5.18		> -4.00		> -4.00	
T-47D	-4.89		> -4.00		> -4.00	
MDA-MB-468	-5.68		-5.01		> -4.00	

MID
Delta
Range

-5.44
0.87
1.89

-4.07
1.06
1.13

-4.0
0
0.0

