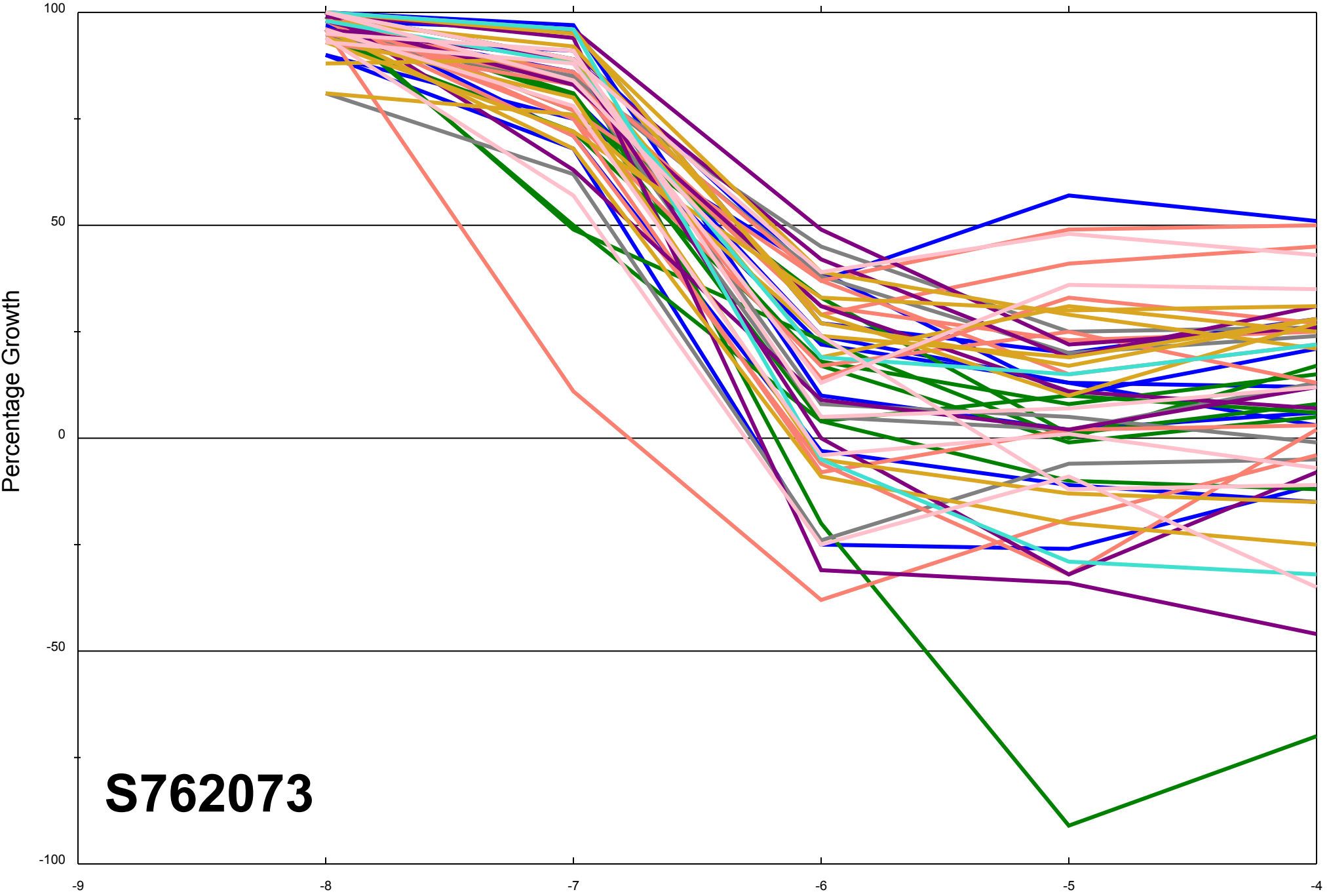


Dose Response Curves

Report Date:February 04, 2012

Test Date:December 05, 2011

All Cell Lines



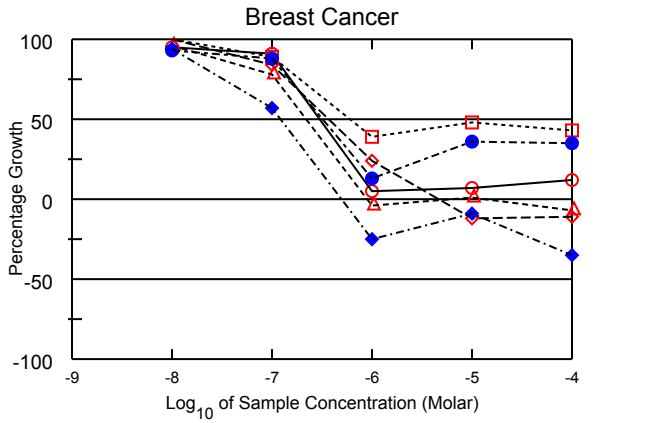
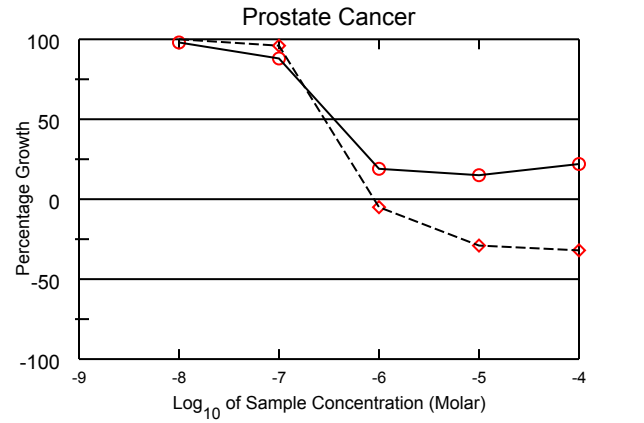
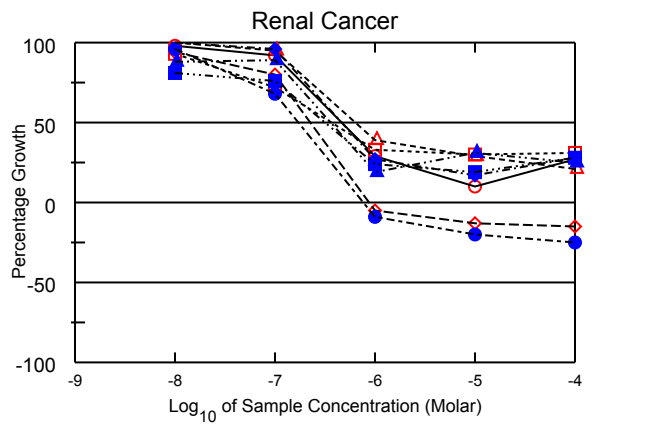
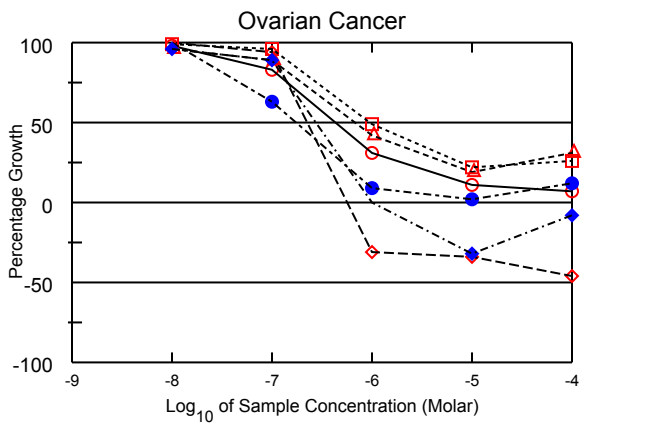
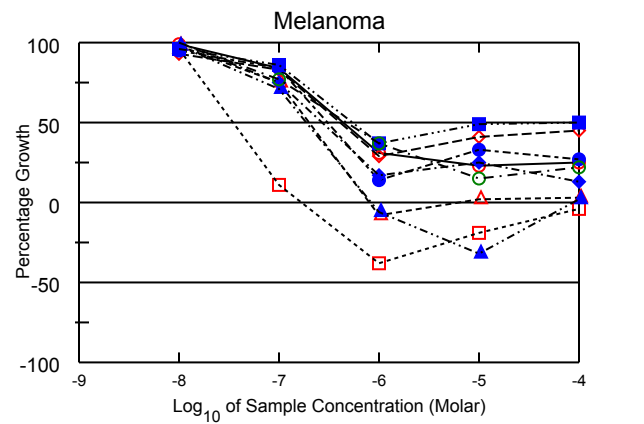
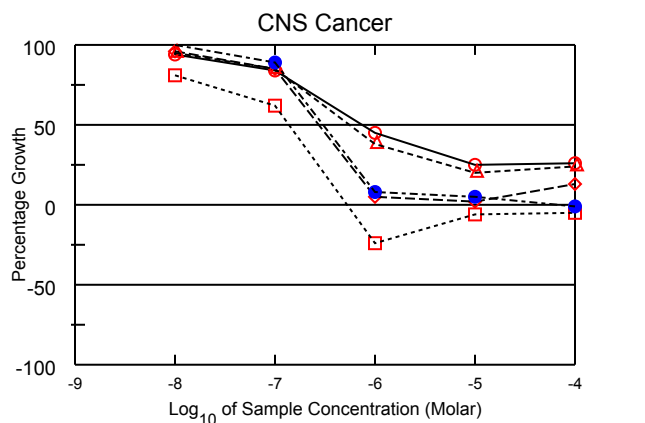
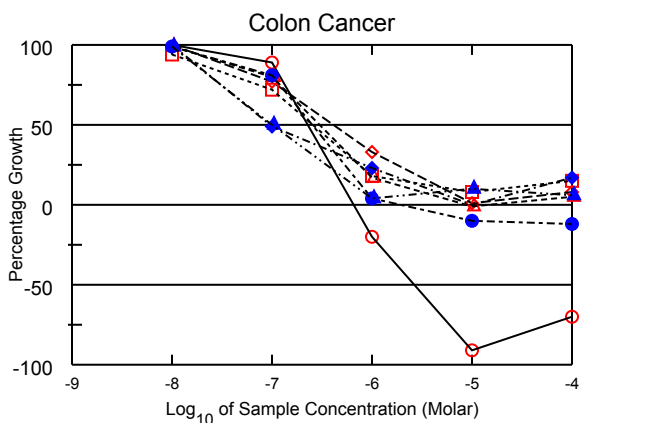
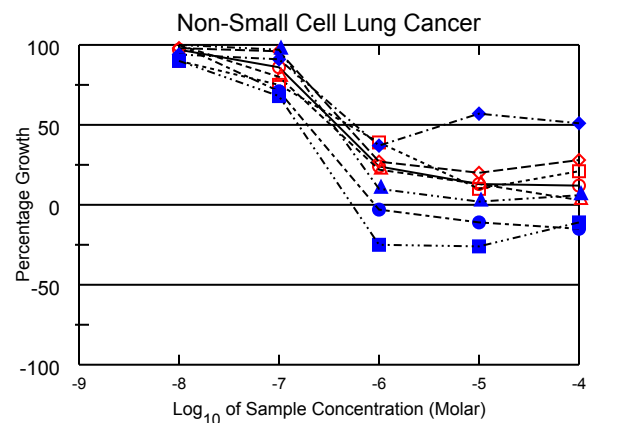
**S762073**

Log<sub>10</sub> of Sample Concentration (Molar)

Dose Response Curves

Report Date: February 04, 2012

Test Date: December 05, 2011



# National Cancer Institute Developmental Therapeutics Program In-Vitro Testing Results

NSC : 762073 / 1	Experiment ID : 1112NS68	Test Type : 08	Units : Molar
Report Date : February 04, 2012	Test Date : December 05, 2011	QNS :	MC :
COMI : A3923/0166934 (109218)	Stain Reagent : SRB Dual-Pass Related	SSPL : 0YAR	

Panel/Cell Line	Log10 Concentration												GI50	TGI	LC50	
	Time Zero	Mean Optical Densities						Percent Growth								
		Ctrl	-8.0	-7.0	-6.0	-5.0	-4.0	-8.0	-7.0	-6.0	-5.0	-4.0				
<b>Non-Small Cell Lung Cancer</b>																
A549/ATCC	0.296	1.490	1.451	1.317	0.586	0.451	0.435	97	86	24	13	12	3.80E-7	> 1.00E-4	> 1.00E-4	
EKVX	0.426	1.431	1.415	1.394	0.695	0.632	0.711	98	96	27	20	28	4.63E-7	> 1.00E-4	> 1.00E-4	
HOP-62	0.454	1.177	1.174	1.034	0.615	0.549	0.473	100	80	22	13	3	3.33E-7	> 1.00E-4	> 1.00E-4	
NCI-H226	0.526	1.134	1.074	0.979	0.764	0.587	0.656	90	75	39	10	21	4.93E-7	> 1.00E-4	> 1.00E-4	
NCI-H23	0.648	1.964	1.991	1.582	0.630	0.578	0.552	102	71	-3	-11	-15	1.93E-7	9.17E-7	> 1.00E-4	
NCI-H322M	0.746	1.827	1.765	1.734	1.148	1.365	1.296	94	91	37	57	51	.	> 1.00E-4	> 1.00E-4	
NCI-H460	0.309	2.672	2.798	2.601	0.543	0.359	0.455	105	97	10	2	6	3.47E-7	> 1.00E-4	> 1.00E-4	
NCI-H522	0.682	1.491	1.412	1.235	0.510	0.506	0.605	90	68	-25	-26	-11	1.57E-7	5.37E-7	> 1.00E-4	
<b>Colon Cancer</b>																
COLO 205	0.316	0.967	1.000	0.894	0.252	0.028	0.096	105	89	-20	-91	-70	2.27E-7	6.52E-7	2.62E-6	
HCC-2998	0.382	1.180	1.205	0.998	0.645	0.393	0.448	103	77	33	1	8	4.11E-7	> 1.00E-4	> 1.00E-4	
HCT-116	0.236	1.751	1.740	1.455	0.499	0.234	0.306	99	80	17	-1	5	3.04E-7	.	> 1.00E-4	
HCT-15	0.426	2.433	2.313	1.864	0.790	0.596	0.728	94	72	18	8	15	2.54E-7	> 1.00E-4	> 1.00E-4	
HT29	0.249	1.247	1.237	1.059	0.285	0.225	0.220	99	81	4	-10	-12	2.52E-7	1.87E-6	> 1.00E-4	
KM12	0.625	2.438	2.434	1.505	1.036	0.622	0.929	100	49	23	.	17	9.36E-8	.	> 1.00E-4	
SW-620	0.264	1.581	1.567	0.921	0.316	0.394	0.343	99	50	4	10	6	9.95E-8	> 1.00E-4	> 1.00E-4	
<b>CNS Cancer</b>																
SF-268	0.528	1.633	1.566	1.456	1.023	0.799	0.818	94	84	45	25	26	7.36E-7	> 1.00E-4	> 1.00E-4	
SF-295	0.834	2.674	2.603	2.397	0.930	0.867	1.072	96	85	5	2	13	2.74E-7	> 1.00E-4	> 1.00E-4	
SNB-19	0.551	1.805	1.747	1.617	1.033	0.796	0.852	95	85	38	20	24	5.65E-7	> 1.00E-4	> 1.00E-4	
SNB-75	0.716	1.222	1.125	1.030	0.545	0.670	0.682	81	62	-24	-6	-5	1.38E-7	5.27E-7	> 1.00E-4	
U251	0.365	1.821	1.829	1.658	0.482	0.441	0.360	101	89	8	5	-1	3.02E-7	6.20E-5	> 1.00E-4	
<b>Melanoma</b>																
LOX IMVI	0.286	2.175	2.150	1.881	0.871	0.716	0.760	99	84	31	23	25	4.41E-7	> 1.00E-4	> 1.00E-4	
MALME-3M	0.749	1.660	1.596	1.509	1.013	1.123	1.162	93	83	29	41	45	4.10E-7	> 1.00E-4	> 1.00E-4	
M14	0.429	1.483	1.461	1.224	0.397	0.450	0.457	98	75	-8	2	3	2.03E-7	.	> 1.00E-4	
MDA-MB-435	0.561	2.256	2.180	0.746	0.350	0.454	0.537	96	11	-38	-19	-4	3.45E-8	1.68E-7	> 1.00E-4	
SK-MEL-2	0.914	1.645	1.609	1.529	1.018	1.157	1.113	95	84	14	33	27	3.08E-7	> 1.00E-4	> 1.00E-4	
SK-MEL-28	0.333	0.928	0.936	0.779	0.433	0.479	0.412	101	75	17	25	13	2.68E-7	> 1.00E-4	> 1.00E-4	
SK-MEL-5	0.584	2.513	2.478	1.956	0.551	0.400	0.618	98	71	-6	-32	2	1.89E-7	.	> 1.00E-4	
UACC-257	0.593	1.338	1.311	1.235	0.866	0.958	0.964	96	86	37	49	50	5.37E-7	> 1.00E-4	> 1.00E-4	
UACC-62	0.632	2.249	2.248	1.877	1.230	0.868	0.984	100	77	37	15	22	4.72E-7	> 1.00E-4	> 1.00E-4	
<b>Ovarian Cancer</b>																
IGROV1	0.402	1.499	1.478	1.313	0.742	0.518	0.478	98	83	31	11	7	4.31E-7	> 1.00E-4	> 1.00E-4	
OVCAR-3	0.491	1.173	1.215	1.135	0.340	0.322	0.265	106	94	-31	-34	-46	2.26E-7	5.67E-7	> 1.00E-4	
OVCAR-4	0.565	1.084	1.064	1.026	0.782	0.665	0.725	96	89	42	19	31	6.66E-7	> 1.00E-4	> 1.00E-4	
OVCAR-5	0.596	1.523	1.516	1.491	1.047	0.803	0.841	99	96	49	22	26	9.34E-7	> 1.00E-4	> 1.00E-4	
NCI/ADR-RES	0.456	1.507	1.592	1.118	0.551	0.478	0.587	108	63	9	2	12	1.74E-7	> 1.00E-4	> 1.00E-4	
SK-OV-3	0.592	1.205	1.183	1.135	0.594	0.405	0.548	96	89	.	-32	-8	2.74E-7	1.02E-6	> 1.00E-4	
<b>Renal Cancer</b>																
786-0	0.581	2.114	2.083	1.996	1.022	0.731	0.994	98	92	29	10	27	4.63E-7	> 1.00E-4	> 1.00E-4	
A498	1.385	2.086	2.045	1.949	1.319	1.208	1.182	94	80	-5	-13	-15	2.28E-7	8.79E-7	> 1.00E-4	
ACHN	0.398	1.619	1.629	1.559	0.877	0.754	0.659	101	95	39	29	21	6.41E-7	> 1.00E-4	> 1.00E-4	
CAKI-1	0.744	2.140	2.037	1.753	1.200	1.160	1.174	93	72	33	30	31	3.65E-7	> 1.00E-4	> 1.00E-4	
RXF 393	0.627	1.154	1.132	0.985	0.574	0.502	0.469	96	68	-9	-20	-25	1.72E-7	7.73E-7	> 1.00E-4	
SN12C	0.596	2.158	2.173	2.096	1.011	0.868	1.037	101	96	27	17	28	4.60E-7	> 1.00E-4	> 1.00E-4	
TK-10	0.591	1.225	1.151	1.154	0.711	0.787	0.751	88	89	19	31	25	3.59E-7	> 1.00E-4	> 1.00E-4	
UO-31	0.572	1.713	1.501	1.445	0.843	0.787	0.895	81	76	24	19	28	3.17E-7	> 1.00E-4	> 1.00E-4	
<b>Prostate Cancer</b>																
PC-3	0.381	1.566	1.538	1.425	0.605	0.557	0.648	98	88	19	15	22	3.55E-7	> 1.00E-4	> 1.00E-4	
DU-145	0.556	1.510	1.543	1.470	0.529	0.395	0.376	103	96	-5	-29	-32	2.85E-7	8.95E-7	> 1.00E-4	
<b>Breast Cancer</b>																
MCF7	0.299	1.708	1.639	1.577	0.372	0.395	0.463	95	91	5	7	12	2.99E-7	> 1.00E-4	> 1.00E-4	
MDA-MB-231/ATCC	0.504	1.115	1.128	1.017	0.648	0.444	0.451	102	84	24	-12	-11	3.65E-7	4.61E-6	> 1.00E-4	
HS 578T	0.966	1.904	1.865	1.697	0.931	0.971	0.899	96	78	-4	1	-7	2.20E-7	.	> 1.00E-4	
BT-549	0.873	1.686	1.695	1.599	1.193	1.267	1.224	101	89	39	48	43	6.13E-7	> 1.00E-4	> 1.00E-4	
T-47D	0.585	1.441	1.384	1.338	0.698	0.894	0.886	93	88	13	36	35	3.22E-7	> 1.00E-4	> 1.00E-4	
MDA-MB-468	0.583	1.209	1.173	0.937	0.438	0.533	0.379	94	67	-25	-9	-35	1.20E-7	4.95E-7	> 1.00E-4	

Mean Graphs

Report Date :February 04, 2012

Test Date :December 05, 2011

