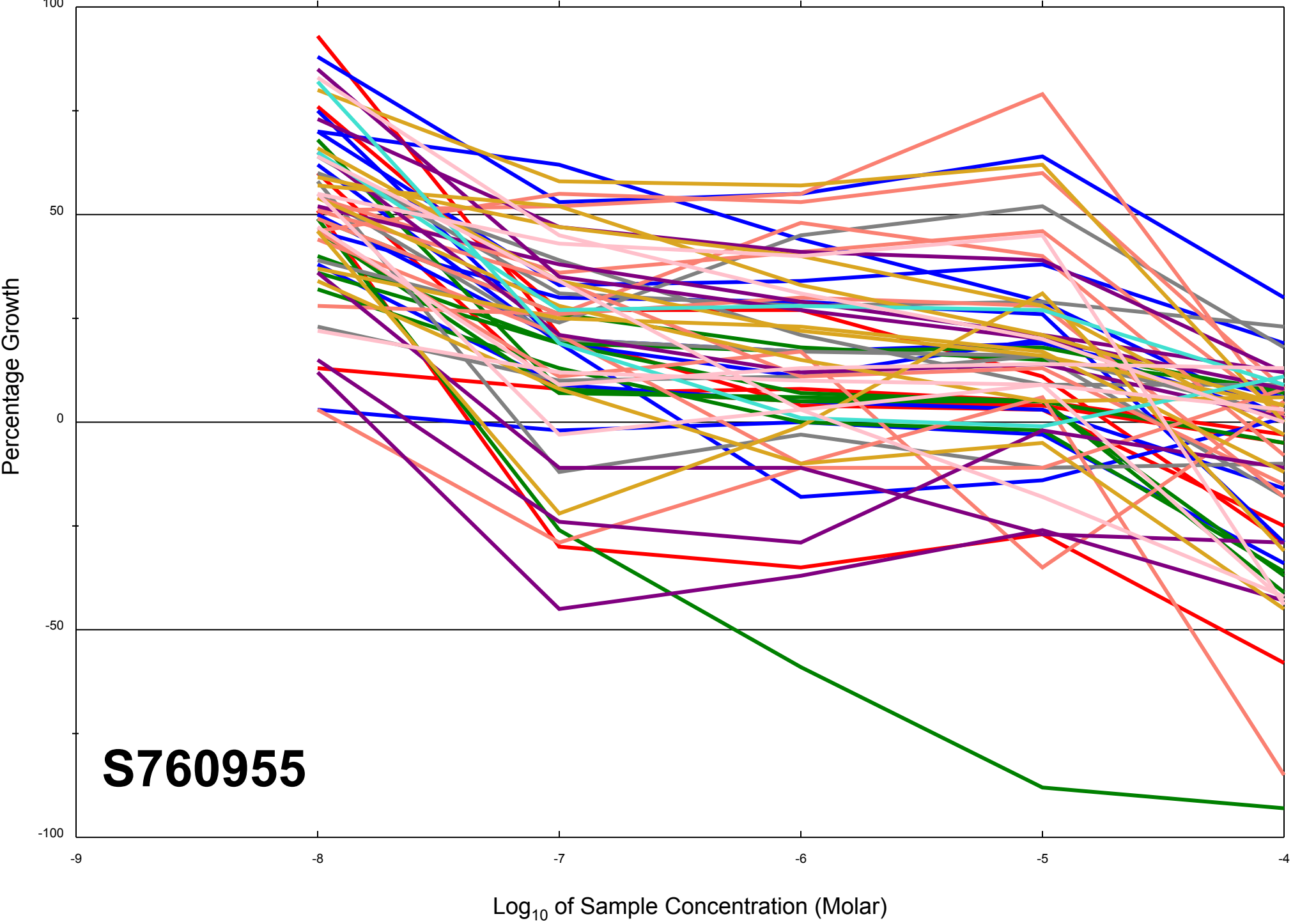


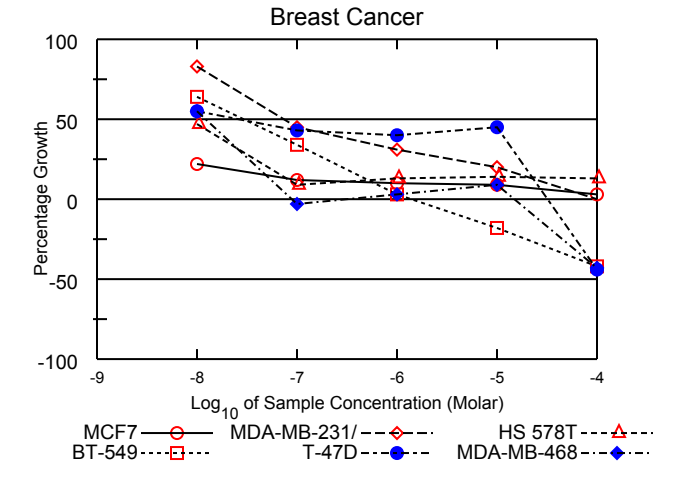
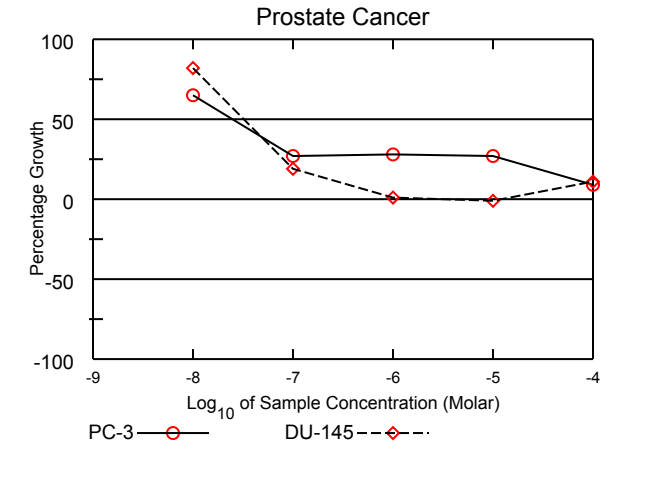
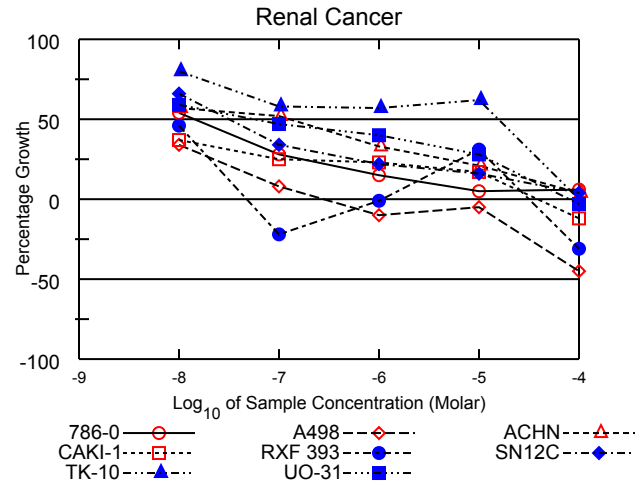
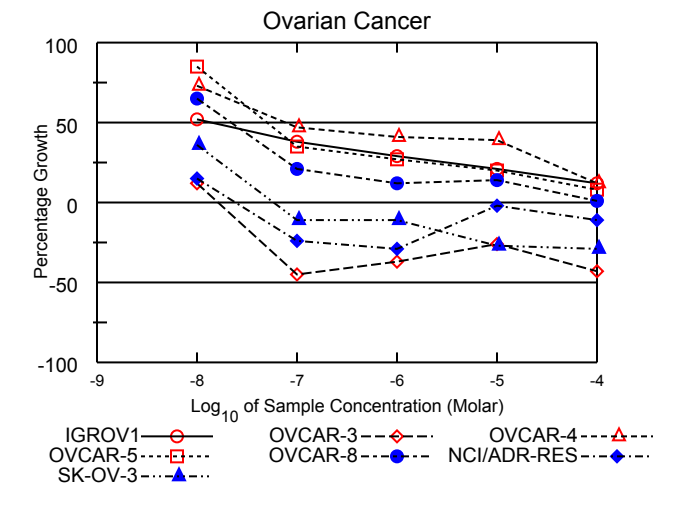
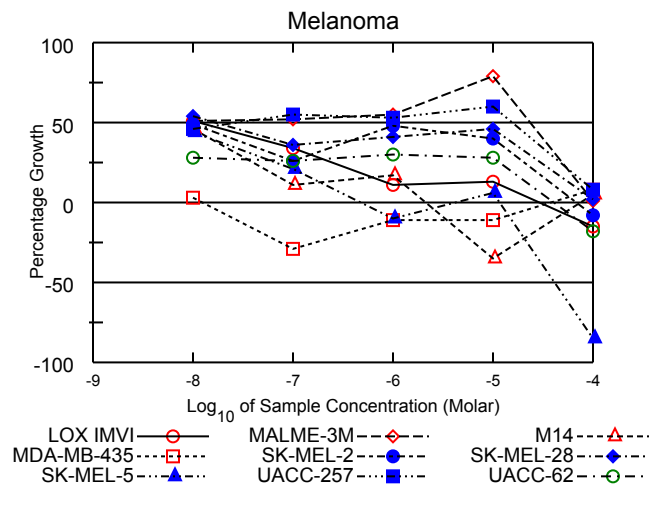
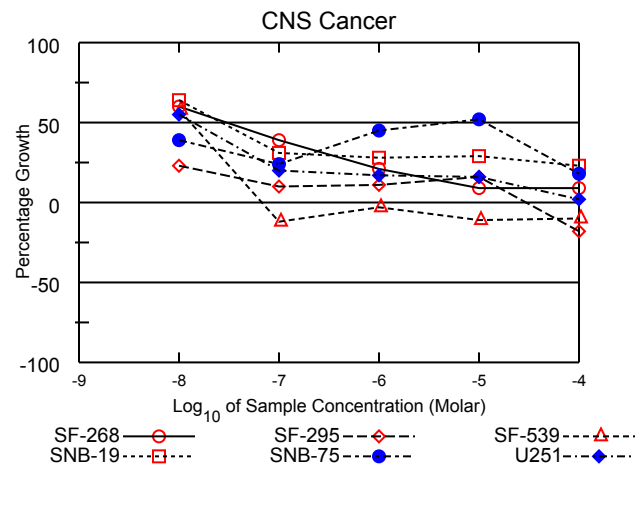
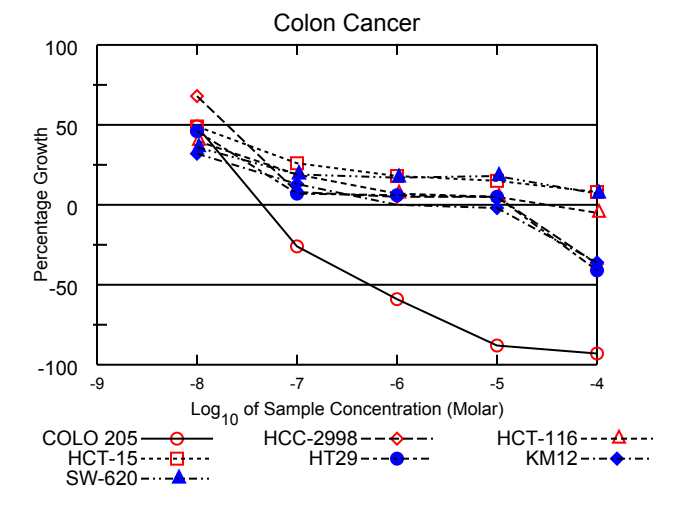
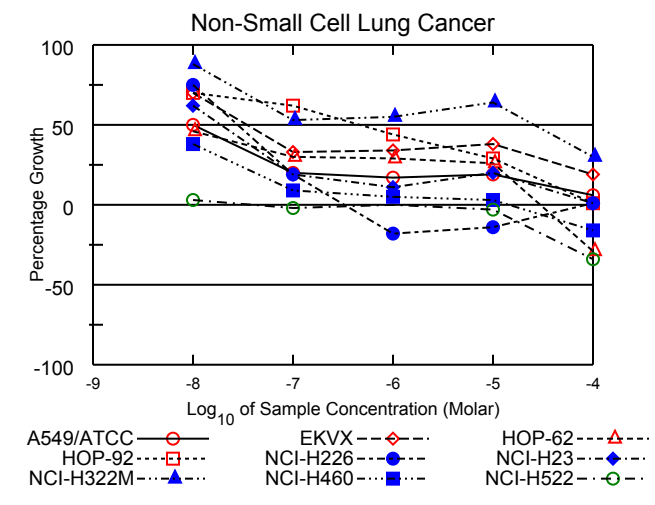
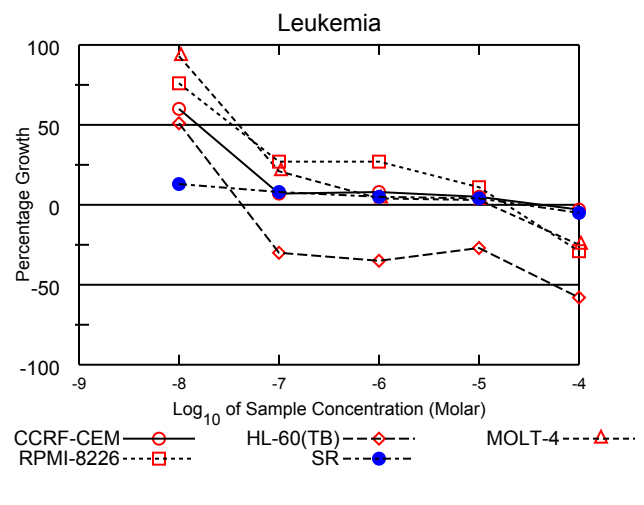
Dose Response Curves

Report Date:December 15, 2011

Test Date:September 06, 2011

All Cell Lines





# National Cancer Institute Developmental Therapeutics Program In-Vitro Testing Results

NSC : 760955 / 1	Experiment ID : 1109NS17	Test Type : 08	Units : Molar
Report Date : December 15, 2011	Test Date : September 06, 2011	QNS :	MC :
COMI : NMR/21217551 (107806)	Stain Reagent : SRB Dual-Pass Related	SSPL : 0YAR	

Panel/Cell Line	Log10 Concentration												GI50	TGI	LC50
	Time Zero	Ctrl	-8.0	-7.0	-6.0	-5.0	-4.0	-8.0	-7.0	-6.0	-5.0	-4.0			
Leukemia															
CCRF-CEM	0.498	1.665	1.200	0.575	0.595	0.557	0.484	60	7	8	5	-3	1.55E-8	4.31E-5	> 1.00E-4
HL-60(TB)	0.758	2.238	1.517	0.533	0.491	0.552	0.321	51	-30	-35	-27	-58	1.04E-8	4.29E-8	5.59E-5
MOLT-4	0.679	2.061	1.969	0.972	0.741	0.727	0.508	93	21	4	3	-25	3.98E-8	1.32E-5	> 1.00E-4
RPMI-8226	1.007	2.401	2.068	1.379	1.387	1.155	0.710	76	27	27	11	-29	3.38E-8	1.84E-5	> 1.00E-4
SR	0.200	0.698	0.265	0.238	0.226	0.218	0.191	13	8	5	4	-5	< 1.00E-8	2.74E-5	> 1.00E-4
Non-Small Cell Lung Cancer															
A549/ATCC	0.312	1.608	0.962	0.577	0.533	0.557	0.395	50	20	17	19	6	1.01E-8	> 1.00E-4	> 1.00E-4
EKVX	0.572	1.585	1.285	0.908	0.914	0.957	0.763	70	33	34	38	19	3.53E-8	> 1.00E-4	> 1.00E-4
HOP-62	0.435	1.131	0.756	0.645	0.636	0.618	0.310	46	30	29	26	-29	< 1.00E-8	3.01E-5	> 1.00E-4
HOP-92	1.026	1.493	1.353	1.315	1.230	1.164	1.033	70	62	44	29	1	4.46E-7	> 1.00E-4	> 1.00E-4
NCI-H226	0.679	1.648	1.402	0.864	0.558	0.587	0.687	75	19	-18	-14	1	2.77E-8	.	> 1.00E-4
NCI-H23	0.483	1.325	1.009	0.647	0.572	0.650	0.493	62	19	11	20	1	1.95E-8	> 1.00E-4	> 1.00E-4
NCI-H322M	0.868	1.783	1.670	1.351	1.374	1.451	1.141	88	53	55	64	30	2.54E-5	> 1.00E-4	> 1.00E-4
NCI-H460	0.205	1.842	0.829	0.360	0.282	0.249	0.172	38	9	5	3	-16	< 1.00E-8	1.39E-5	> 1.00E-4
NCI-H522	0.735	1.753	0.761	0.718	0.740	0.716	0.485	3	-2	.	-3	-34	< 1.00E-8	.	> 1.00E-4
Colon Cancer															
COLO 205	0.334	1.198	0.757	0.248	0.136	0.040	0.024	49	-26	-59	-88	-93	< 1.00E-8	4.51E-8	5.27E-7
HCC-2998	0.389	1.272	0.991	0.464	0.438	0.429	0.244	68	8	5	5	-37	2.01E-8	1.28E-5	> 1.00E-4
HCT-116	0.140	1.148	0.544	0.327	0.214	0.191	0.134	40	19	7	5	-5	< 1.00E-8	3.32E-5	> 1.00E-4
HCT-15	0.350	1.859	1.096	0.743	0.627	0.571	0.470	49	26	18	15	8	< 1.00E-8	> 1.00E-4	> 1.00E-4
HT29	0.227	1.425	0.775	0.313	0.301	0.288	0.133	46	7	6	5	-41	< 1.00E-8	1.28E-5	> 1.00E-4
KM12	0.420	1.942	0.912	0.617	0.423	0.412	0.269	32	13	.	-2	-36	< 1.00E-8	1.19E-6	> 1.00E-4
SW-620	0.247	1.694	0.768	0.521	0.500	0.501	0.343	36	19	17	18	7	< 1.00E-8	> 1.00E-4	> 1.00E-4
CNS Cancer															
SF-268	0.451	1.402	1.023	0.821	0.653	0.541	0.535	60	39	21	9	9	3.00E-8	> 1.00E-4	> 1.00E-4
SF-295	0.583	2.140	0.943	0.739	0.751	0.833	0.479	23	10	11	16	-18	< 1.00E-8	2.97E-5	> 1.00E-4
SF-539	0.670	2.004	1.443	0.593	0.650	0.600	0.605	58	-12	-3	-11	-10	1.30E-8	6.82E-8	> 1.00E-4
SNB-19	0.458	1.693	1.249	0.846	0.808	0.817	0.744	64	31	28	29	23	2.69E-8	> 1.00E-4	> 1.00E-4
SNB-75	0.748	1.725	1.126	0.983	1.187	1.254	0.923	39	24	45	52	18	.	> 1.00E-4	> 1.00E-4
U251	0.298	1.519	0.974	0.540	0.509	0.499	0.327	55	20	17	16	2	1.41E-8	> 1.00E-4	> 1.00E-4
Melanoma															
LOX IMVI	0.194	1.289	0.751	0.570	0.311	0.340	0.164	51	34	11	13	-15	1.12E-8	2.90E-5	> 1.00E-4
MALME-3M	0.531	1.138	0.841	0.845	0.862	1.012	0.536	51	52	55	79	1	2.36E-5	> 1.00E-4	> 1.00E-4
M14	0.361	1.271	0.779	0.458	0.515	0.233	0.403	46	11	17	-35	5	< 1.00E-8	.	> 1.00E-4
MDA-MB-435	0.516	2.268	0.572	0.366	0.460	0.461	0.654	3	-29	-11	-11	8	< 1.00E-8	.	> 1.00E-4
SK-MEL-2	0.869	1.687	1.268	1.082	1.265	1.200	0.797	49	26	48	40	-8	< 1.00E-8	6.75E-5	> 1.00E-4
SK-MEL-28	0.441	1.327	0.922	0.759	0.809	0.848	0.460	54	36	41	46	2	1.70E-8	> 1.00E-4	> 1.00E-4
SK-MEL-5	0.295	2.318	1.178	0.713	0.265	0.425	0.043	44	21	-10	6	-85	< 1.00E-8	.	4.11E-5
UACC-257	0.653	1.441	1.019	1.085	1.073	1.125	0.719	46	55	53	60	8	.	> 1.00E-4	> 1.00E-4
UACC-62	0.689	2.229	1.121	1.090	1.151	1.122	0.562	28	26	30	28	-18	< 1.00E-8	4.02E-5	> 1.00E-4
Ovarian Cancer															
IGROV1	0.456	1.590	1.044	0.886	0.788	0.690	0.589	52	38	29	21	12	1.36E-8	> 1.00E-4	> 1.00E-4
OVCAR-3	0.552	1.528	0.665	0.301	0.346	0.411	0.316	12	-45	-37	-26	-43	< 1.00E-8	1.59E-8	> 1.00E-4
OVCAR-4	0.420	1.060	0.888	0.723	0.681	0.667	0.495	73	47	41	39	12	7.87E-8	> 1.00E-4	> 1.00E-4
OVCAR-5	0.527	1.393	1.260	0.833	0.757	0.696	0.600	85	35	27	20	8	5.05E-8	> 1.00E-4	> 1.00E-4
OVCAR-8	0.376	1.611	1.174	0.632	0.525	0.545	0.389	65	21	12	14	1	2.15E-8	> 1.00E-4	> 1.00E-4
NCI/ADR-RES	0.451	1.595	0.628	0.341	0.322	0.442	0.403	15	-24	-29	-2	-11	< 1.00E-8	2.44E-8	> 1.00E-4
SK-OV-3	0.356	0.880	0.546	0.317	0.317	0.261	0.254	36	-11	-11	-27	-29	< 1.00E-8	5.86E-8	> 1.00E-4
Renal Cancer															
786-0	0.457	1.726	1.144	0.815	0.653	0.520	0.534	54	28	15	5	6	1.45E-8	> 1.00E-4	> 1.00E-4
A498	1.040	1.589	1.226	1.082	0.936	0.991	0.570	34	8	-10	-5	-45	< 1.00E-8	2.71E-7	> 1.00E-4
ACHN	0.403	1.678	1.134	1.061	0.822	0.670	0.459	57	52	33	21	4	1.22E-7	> 1.00E-4	> 1.00E-4
CAKI-1	0.595	2.037	1.128	0.956	0.929	0.837	0.521	37	25	23	17	-12	< 1.00E-8	3.75E-5	> 1.00E-4
RXF 393	0.550	1.115	0.809	0.428	0.547	0.724	0.377	46	-22	-1	31	-31	< 1.00E-8	.	> 1.00E-4
SN12C	0.449	1.754	1.311	0.895	0.741	0.658	0.503	66	34	22	16	4	3.18E-8	> 1.00E-4	> 1.00E-4
TK-10	0.708	1.489	1.331	1.158	1.156	1.196	0.709	80	58	57	62	.	1.58E-5	> 1.00E-4	> 1.00E-4
UO-31	0.540	1.451	1.073	0.971	0.903	0.797	0.524	59	47	40	28	-3	5.78E-8	8.03E-5	> 1.00E-4
Prostate Cancer															
PC-3	0.483	1.273	0.995	0.698	0.701	0.695	0.558	65	27	28	27	9	2.48E-8	> 1.00E-4	> 1.00E-4
DU-145	0.333	1.224	1.063	0.501	0.338	0.329	0.434	82	19	1	-1	11	3.20E-8	.	> 1.00E-4
Breast Cancer															
MCF7	0.250	1.337	0.485	0.385	0.354	0.343	0.285	22	12	10	9	3	< 1.00E-8	> 1.00E-4	> 1.00E-4
MDA-MB-231/ATCC	0.637	1.697	1.514	1.113	0.964	0.852	0.637	83	45	31	20	.	7.34E-8	9.91E-5	> 1.00E-4
HS 578T	0.814	1.655	1.212	0.890	0.920	0.928	0.925	47	9	13	14	13	< 1.00E-8	> 1.00E-4	> 1.00E-4
BT-549	0.679	1.518	1.212	0.962	0.702	0.555	0.392	64	34	3	-18	-42	2.85E-8	1.35E-6	> 1.00E-4
T-47D	0.525	1.127	0.857	0.787	0.765	0.794	0.292	55	43	40	45	-44	2.72E-8	3.17E-5	> 1.00E-4
MDA-MB-468	0.608	1.259	0.966	0.592	0.631	0.668	0.350	55	-3	3	9	-43	1.22E-8	.	> 1.00E-4

Mean Graphs

Report Date :December 15, 2011

Test Date :September 06, 2011

