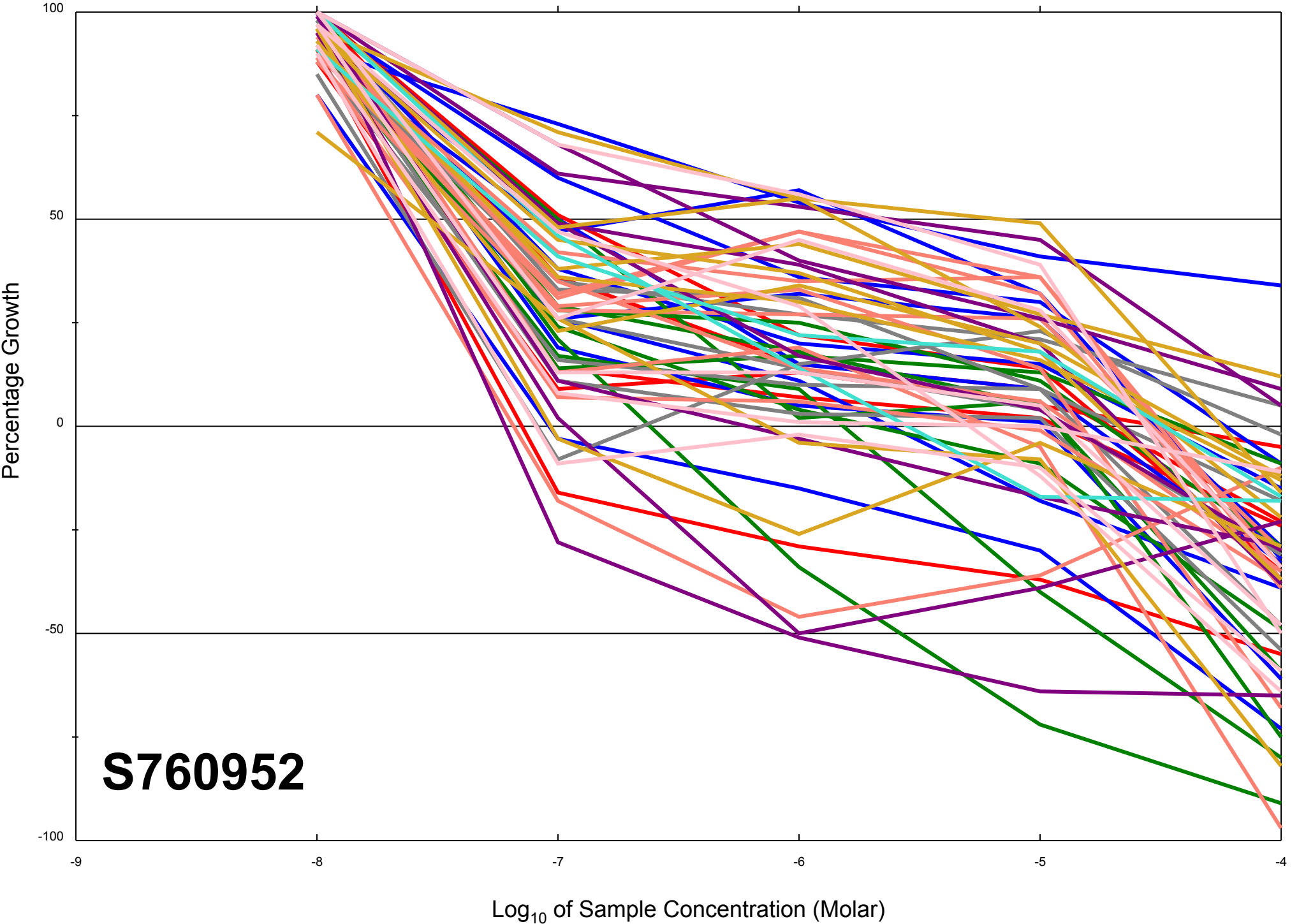
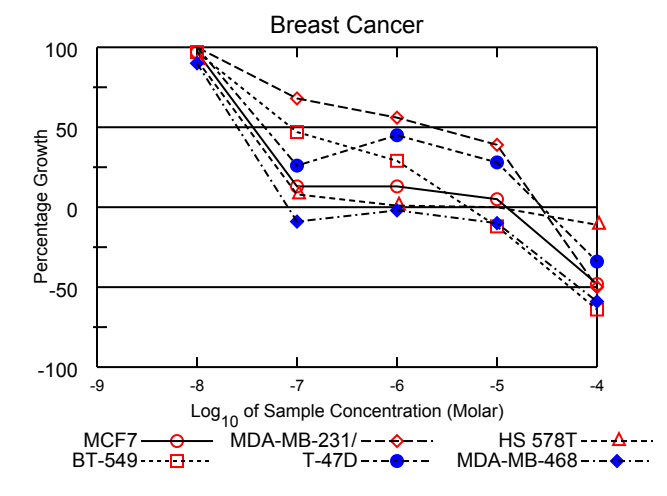
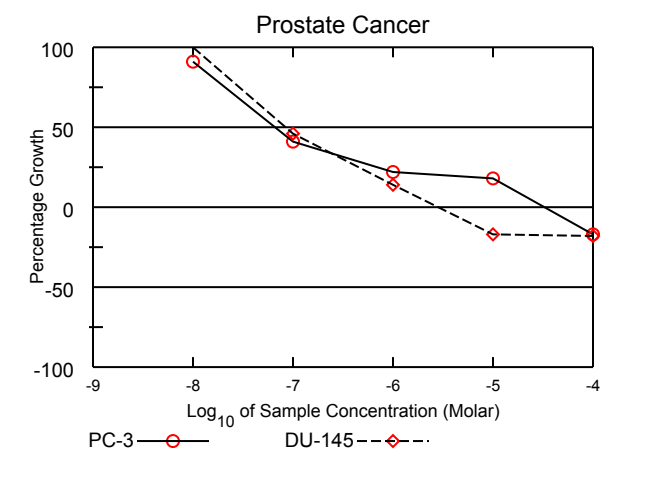
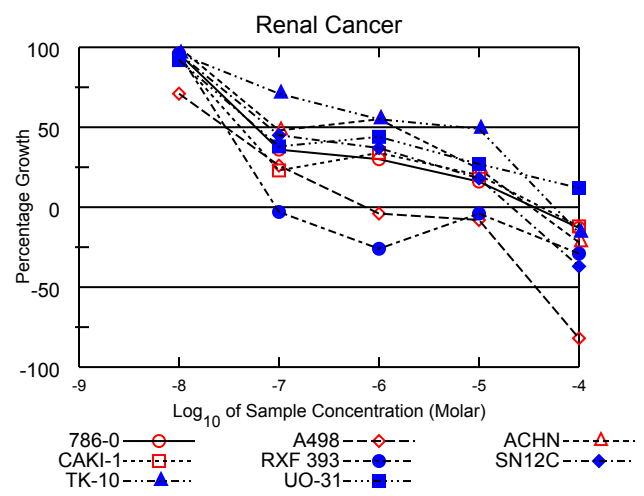
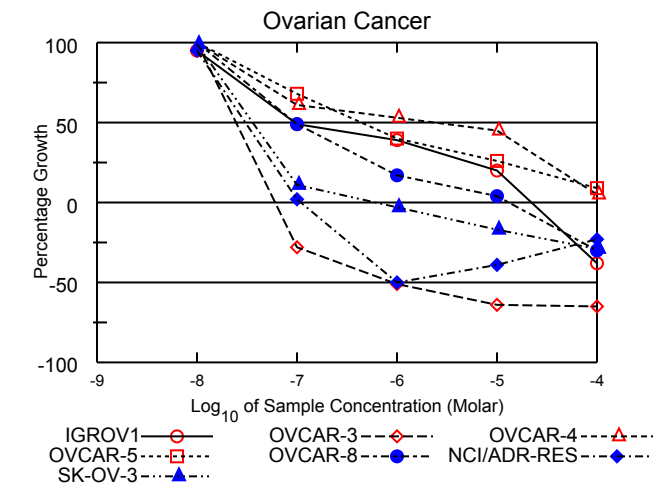
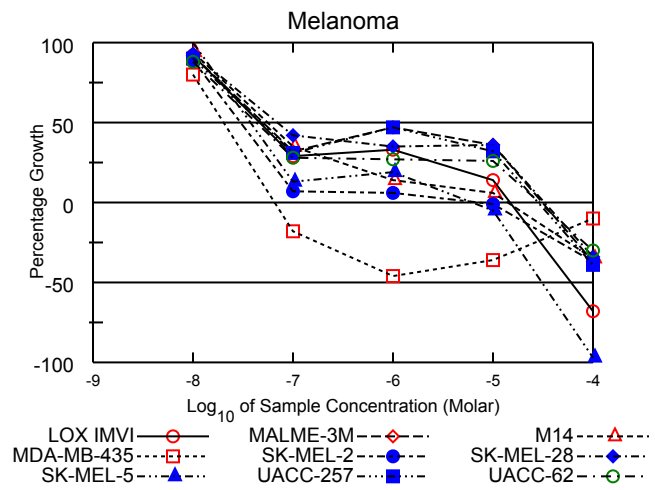
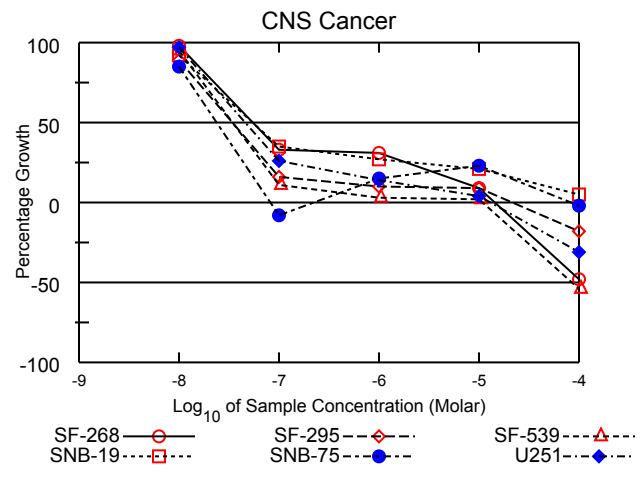
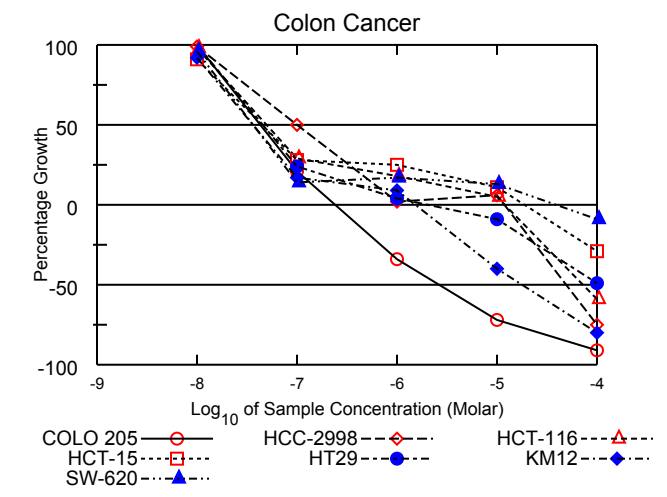
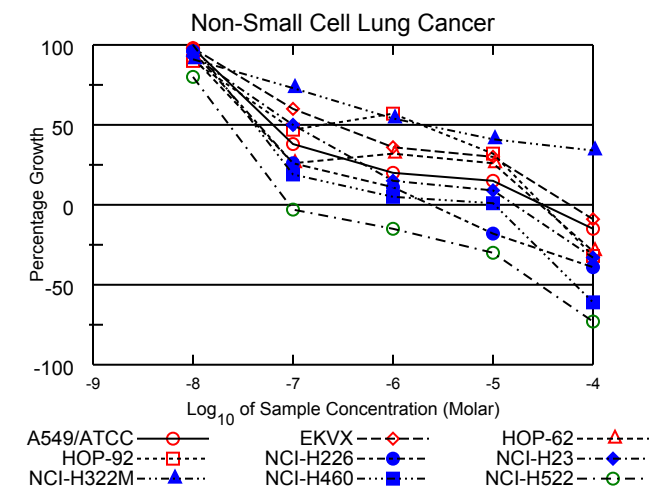
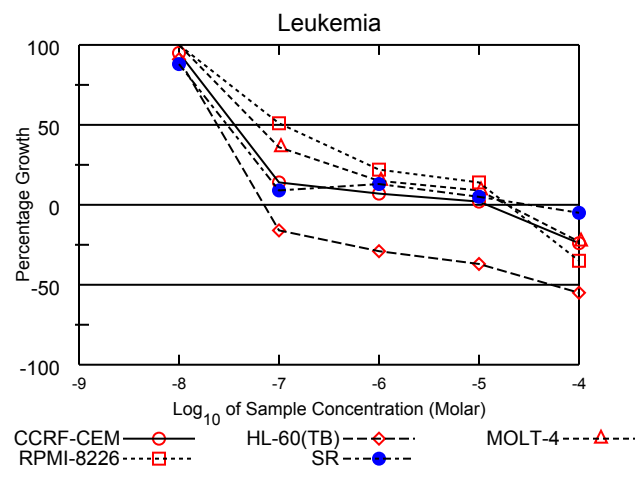


All Cell Lines





# National Cancer Institute Developmental Therapeutics Program In-Vitro Testing Results

NSC : 760952 / 1	Experiment ID : 1109NS17	Test Type : 08	Units : Molar
Report Date : December 15, 2011	Test Date : September 06, 2011	QNS :	MC :
COMI : NMR/20221889 (107803)	Stain Reagent : SRB Dual-Pass Related	SSPL : 0YAR	

Panel/Cell Line	Log10 Concentration												GI50	TGI	LC50	
	Time	Mean Optical Densities						Percent Growth								
	Zero	Ctrl	-8.0	-7.0	-6.0	-5.0	-4.0	-8.0	-7.0	-6.0	-5.0	-4.0				
<b>Leukemia</b>																
CCRF-CEM	0.498	1.709	1.643	0.673	0.581	0.527	0.376	95	14	7	2	-24	3.60E-8	1.22E-5	> 1.00E-4	
HL-60(TB)	0.758	2.300	2.157	0.640	0.541	0.480	0.340	91	-16	-29	-37	-55	2.42E-8	7.13E-8	5.25E-5	
MOLT-4	0.679	2.111	2.131	1.200	0.900	0.804	0.526	101	36	15	9	-23	6.17E-8	1.90E-5	> 1.00E-4	
RPMI-8226	1.007	2.410	2.441	1.717	1.310	1.209	0.655	102	51	22	14	-35	1.05E-7	1.95E-5	> 1.00E-4	
SR	0.200	0.714	0.651	0.248	0.266	0.227	0.191	88	9	13	5	-5	3.02E-8	3.42E-5	> 1.00E-4	
<b>Non-Small Cell Lung Cancer</b>																
A549/ATCC	0.312	1.579	1.554	0.790	0.560	0.498	0.266	98	38	20	15	-15	6.25E-8	3.13E-5	> 1.00E-4	
EKVX	0.572	1.595	1.572	1.188	0.936	0.879	0.523	98	60	36	30	-9	2.59E-7	6.00E-5	> 1.00E-4	
HOP-62	0.435	1.091	1.037	0.606	0.645	0.607	0.310	92	26	32	26	-29	4.32E-8	2.99E-5	> 1.00E-4	
HOP-92	1.026	1.482	1.436	1.240	1.286	1.174	0.698	90	47	57	32	-32	3.19E-8	3.19E-5	> 1.00E-4	
NCI-H226	0.679	1.559	1.528	0.907	0.780	0.556	0.416	96	26	11	-18	-39	4.55E-8	2.43E-6	> 1.00E-4	
NCI-H23	0.483	1.332	1.269	0.904	0.609	0.562	0.326	93	50	15	9	-33	9.77E-8	1.67E-5	> 1.00E-4	
NCI-H322M	0.868	1.749	1.665	1.513	1.345	1.232	1.167	91	73	54	41	34	2.11E-6	> 1.00E-4	> 1.00E-4	
NCI-H460	0.205	1.791	1.889	0.504	0.292	0.219	0.079	106	19	5	1	-61	4.40E-8	1.03E-5	6.55E-5	
NCI-H522	0.735	1.774	1.569	0.714	0.624	0.514	0.200	80	-3	-15	-30	-73	2.31E-8	9.22E-8	2.92E-5	
<b>Colon Cancer</b>																
COLO 205	0.334	1.169	1.175	0.509	0.221	0.094	0.029	101	21	-34	-72	-91	4.32E-8	2.41E-7	2.66E-6	
HCC-2998	0.389	1.337	1.328	0.866	0.410	0.444	0.098	99	50	2	6	-75	1.01E-7	1.18E-5	4.91E-5	
HCT-116	0.140	1.095	1.077	0.418	0.310	0.184	0.058	98	29	18	5	-59	4.98E-8	1.18E-5	7.24E-5	
HCT-15	0.350	1.786	1.662	0.748	0.712	0.508	0.250	91	28	25	11	-29	4.47E-8	1.89E-5	> 1.00E-4	
HT29	0.227	1.363	1.380	0.499	0.277	0.208	0.115	102	24	4	-9	-49	4.62E-8	2.18E-6	> 1.00E-4	
KM12	0.420	1.868	1.755	0.668	0.550	0.250	0.082	92	17	9	-40	-80	3.65E-8	1.52E-6	1.73E-5	
SW-620	0.247	1.621	1.562	0.445	0.475	0.428	0.226	96	14	17	13	-9	3.65E-8	3.99E-5	> 1.00E-4	
<b>CNS Cancer</b>																
SF-268	0.451	1.374	1.354	0.752	0.735	0.532	0.236	98	33	31	9	-48	5.41E-8	1.43E-5	> 1.00E-4	
SF-295	0.583	2.077	1.912	0.828	0.727	0.714	0.476	89	16	10	9	-18	3.44E-8	2.10E-5	> 1.00E-4	
SF-539	0.670	1.966	1.906	0.811	0.709	0.699	0.310	95	11	3	2	-54	3.44E-8	1.09E-5	8.58E-5	
SNB-19	0.458	1.725	1.628	0.898	0.805	0.722	0.519	92	35	27	21	5	5.43E-8	> 1.00E-4	> 1.00E-4	
SNB-75	0.748	1.559	1.437	0.689	0.869	0.934	0.730	85	-8	15	23	-2	2.38E-8	.	> 1.00E-4	
U251	0.298	1.419	1.382	0.595	0.454	0.346	0.207	97	26	14	4	-31	4.62E-8	1.33E-5	> 1.00E-4	
<b>Melanoma</b>																
LOX IMVI	0.194	1.258	1.170	0.501	0.545	0.343	0.063	92	29	33	14	-68	4.60E-8	1.48E-5	6.06E-5	
MALME-3M	0.531	1.101	1.057	0.713	0.798	0.737	0.337	92	32	47	36	-37	5.01E-8	3.14E-5	> 1.00E-4	
M14	0.361	1.354	1.294	0.704	0.498	0.417	0.234	94	35	14	6	-35	5.49E-8	1.37E-5	> 1.00E-4	
MDA-MB-435	0.516	2.163	1.834	0.425	0.278	0.329	0.466	80	-18	-46	-36	-10	2.03E-8	6.59E-8	> 1.00E-4	
SK-MEL-2	0.869	1.656	1.571	0.927	0.920	0.858	0.551	89	7	6	-1	-37	3.01E-8	6.77E-6	> 1.00E-4	
SK-MEL-28	0.441	1.296	1.235	0.802	0.737	0.749	0.292	93	42	35	36	-34	7.00E-8	3.27E-5	> 1.00E-4	
SK-MEL-5	0.295	2.232	2.246	0.547	0.672	0.280	0.008	101	13	19	-5	-97	3.78E-8	6.13E-6	3.06E-5	
UACC-257	0.653	1.392	1.318	0.879	1.004	0.889	0.398	90	31	47	32	-39	4.71E-8	2.81E-5	> 1.00E-4	
UACC-62	0.689	2.176	1.998	1.112	1.097	1.077	0.480	88	28	27	26	-30	4.34E-8	2.89E-5	> 1.00E-4	
<b>Ovarian Cancer</b>																
IGROV1	0.456	1.482	1.433	0.964	0.858	0.661	0.281	95	49	39	20	-38	9.73E-8	2.19E-5	> 1.00E-4	
OVCAR-3	0.552	1.494	1.532	0.397	0.272	0.201	0.192	104	-28	-51	-64	-65	2.56E-8	6.13E-8	9.21E-7	
OVCAR-4	0.420	0.937	0.941	0.737	0.695	0.653	0.447	101	61	53	45	5	2.51E-6	> 1.00E-4	> 1.00E-4	
OVCAR-5	0.527	1.390	1.414	1.115	0.875	0.752	0.601	103	68	40	26	9	4.47E-7	> 1.00E-4	> 1.00E-4	
OVCAR-8	0.376	1.601	1.656	0.980	0.590	0.425	0.263	104	49	17	4	-30	9.71E-8	1.31E-5	> 1.00E-4	
NCI/ADR-RES	0.451	1.581	1.521	0.470	0.227	0.276	0.348	95	2	-50	-39	-23	3.02E-8	1.08E-7	> 1.00E-4	
SK-OV-3	0.356	0.889	0.885	0.415	0.344	0.295	0.251	99	11	-3	-17	-29	3.62E-8	5.84E-7	> 1.00E-4	
<b>Renal Cancer</b>																
786-0	0.457	1.727	1.670	0.918	0.837	0.663	0.396	96	36	30	16	-13	5.87E-8	3.52E-5	> 1.00E-4	
A498	1.040	1.581	1.423	1.180	0.997	0.961	0.192	71	26	-4	-8	-82	2.91E-8	7.26E-7	3.74E-5	
ACHN	0.403	1.603	1.612	0.979	1.063	0.695	0.314	101	48	55	24	-22	.	3.34E-5	> 1.00E-4	
CAKI-1	0.595	1.984	1.884	0.912	1.070	0.869	0.526	93	23	34	20	-12	4.09E-8	4.26E-5	> 1.00E-4	
RXF 393	0.550	1.086	1.063	0.532	0.410	0.526	0.389	96	-3	-26	-4	-29	2.90E-8	9.27E-8	> 1.00E-4	
SN12C	0.449	1.662	1.613	0.993	0.900	0.669	0.283	96	45	37	18	-37	7.92E-8	2.13E-5	> 1.00E-4	
TK-10	0.708	1.498	1.469	1.272	1.141	1.093	0.597	96	71	55	49	-16	6.01E-6	5.69E-5	> 1.00E-4	
UO-31	0.540	1.420	1.347	0.871	0.924	0.781	0.649	92	38	44	27	12	5.89E-8	> 1.00E-4	> 1.00E-4	
<b>Prostate Cancer</b>																
PC-3	0.483	1.256	1.189	0.798	0.657	0.620	0.399	91	41	22	18	-17	6.56E-8	3.19E-5	> 1.00E-4	
DU-145	0.333	1.214	1.221	0.738	0.455	0.276	0.272	101	46	14	-17	-18	8.45E-8	2.78E-6	> 1.00E-4	
<b>Breast Cancer</b>																
MCF7	0.250	1.295	1.260	0.391	0.383	0.305	0.131	97	13	13	5	-48	3.64E-8	1.25E-5	> 1.00E-4	
MDA-MB-231/ATCC	0.637	1.587	1.627	1.284	1.167	1.004	0.316	104	68	56	39	-50	2.17E-6	2.71E-5	9.90E-5	
HS 578T	0.814	1.621	1.556	0.879	0.821	0.813	0.723	92	8	1	.	-11	3.16E-8	7.37E-6	> 1.00E-4	
BT-549	0.679	1.528	1.500	1.079	0.922	0.596	0.244	97	47	29	-12	-64	8.74E-8	5.01E-6	5.35E-5	
T-47D	0.525	1.019	1.054	0.652	0.748	0.661	0.346	107	26	45	28	-34	5.02E-8	2.80E-5	> 1.00E-4	
MDA-MB-468	0.608	1.176	1.120	0.553	0.595	0.550	0.247	90	-9	-2	-10	-59	2.54E-8	8.09E-8	6.48E-5	

Mean Graphs

Report Date :December 15, 2011

Test Date :September 06, 2011

