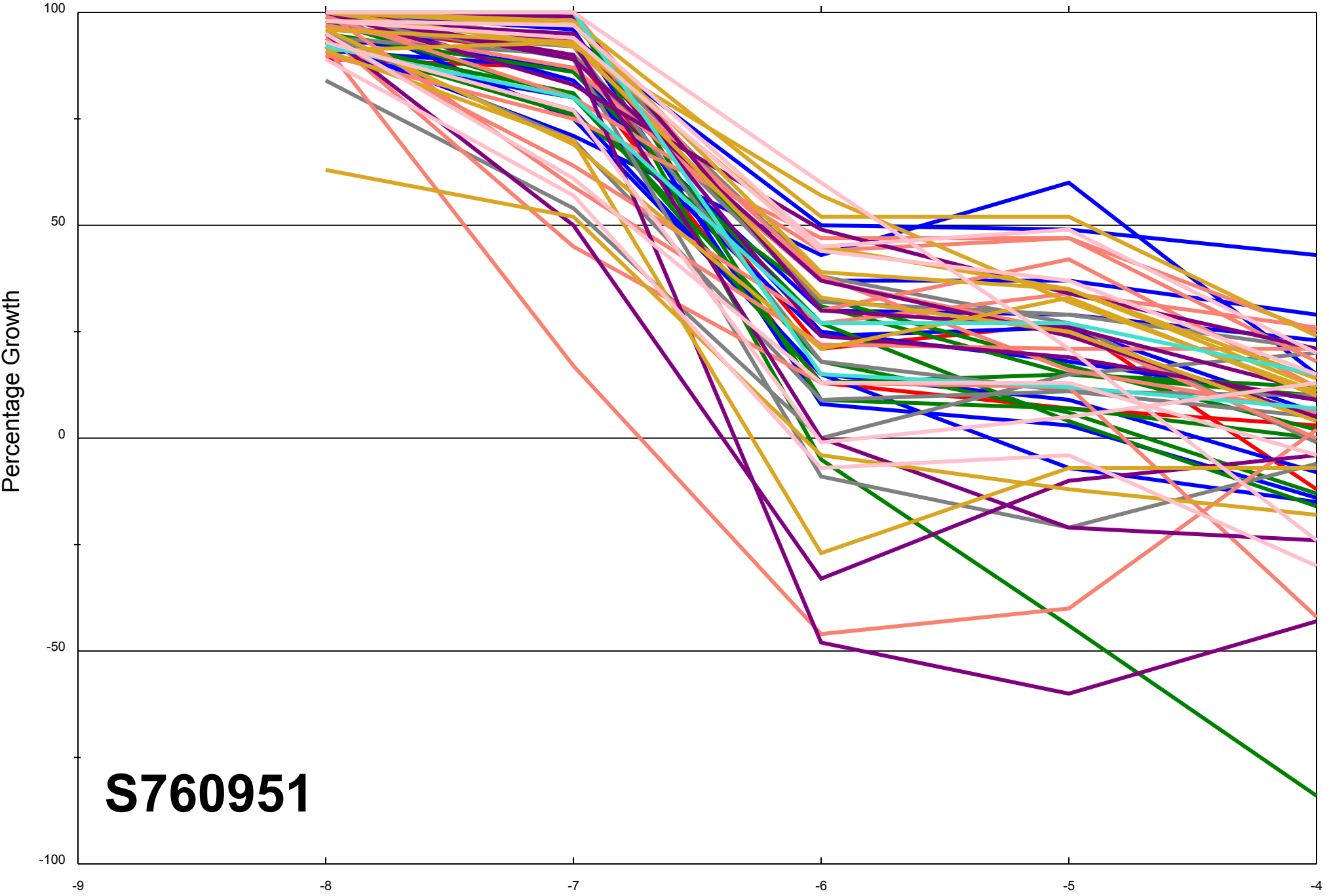


Dose Response Curves

Report Date:December 15, 2011

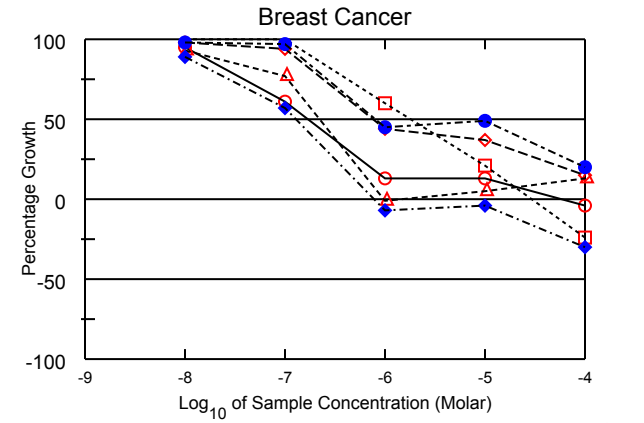
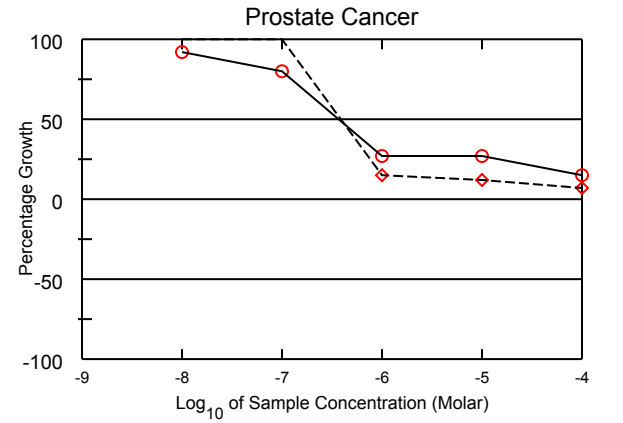
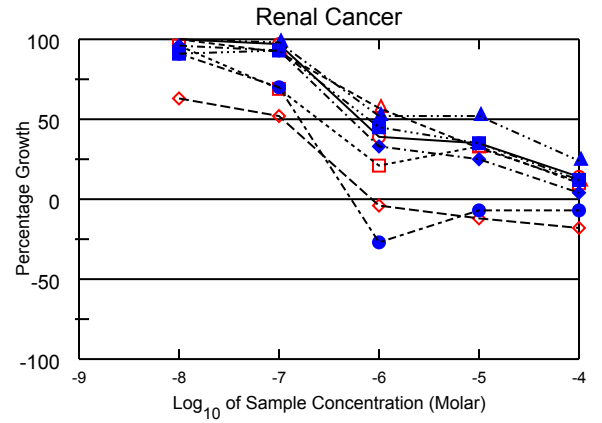
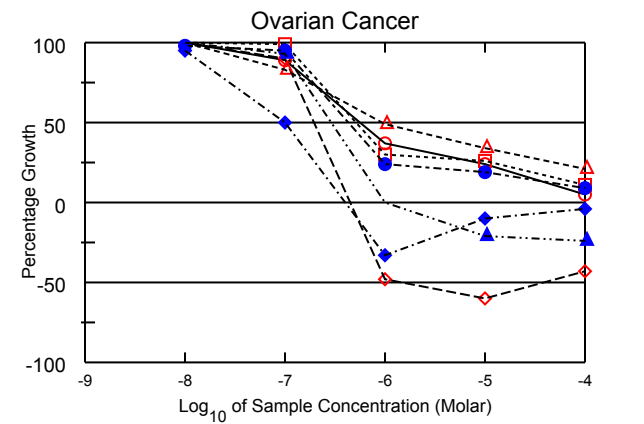
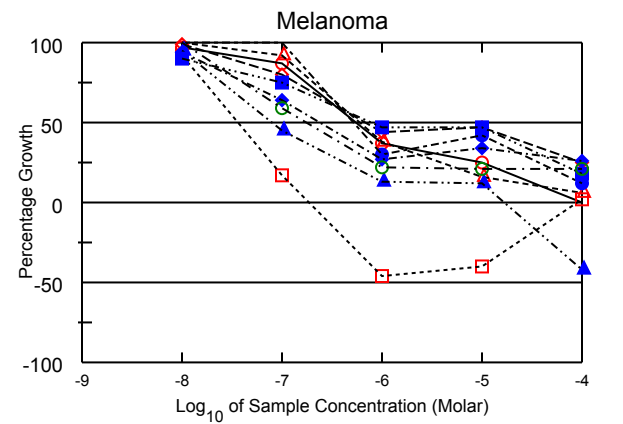
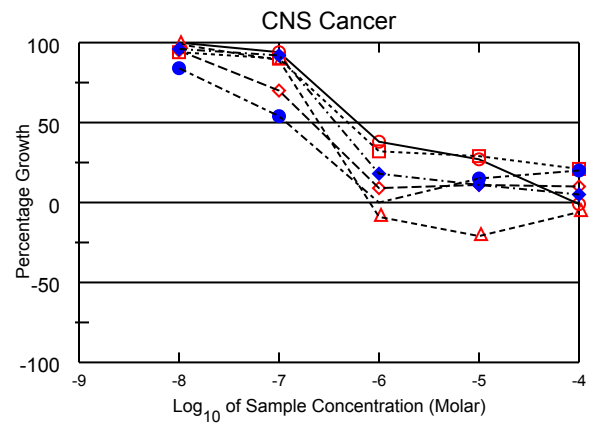
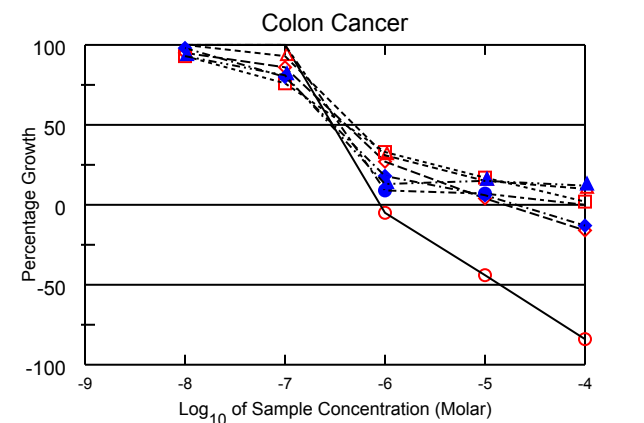
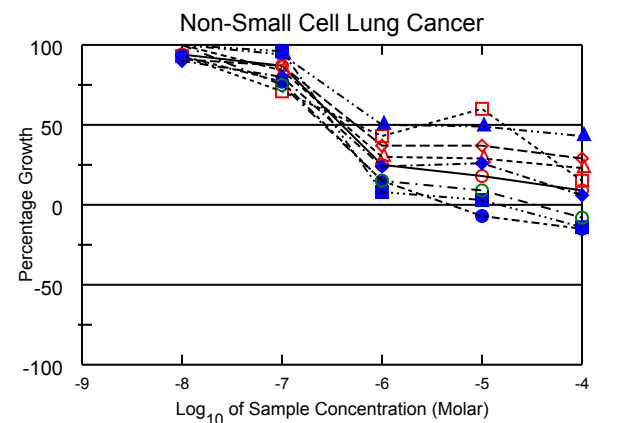
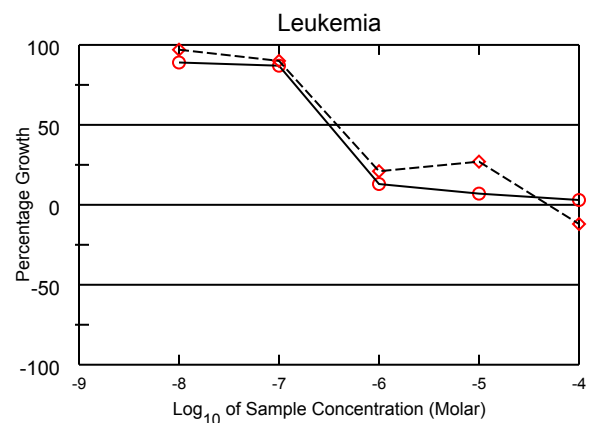
Test Date:September 06, 2011

All Cell Lines



**S760951**

Log<sub>10</sub> of Sample Concentration (Molar)



# National Cancer Institute Developmental Therapeutics Program In-Vitro Testing Results

NSC : 760951 / 1	Experiment ID : 1109NS17	Test Type : 08	Units : Molar
Report Date : December 15, 2011	Test Date : September 06, 2011	QNS :	MC :
COMI : A4179/0178063 (107802)	Stain Reagent : SRB Dual-Pass Related	SSPL : 0YAR	

Panel/Cell Line	Log10 Concentration												GI50	TGI	LC50
	Time Zero	Ctrl	-8.0	-7.0	-6.0	-5.0	-4.0	-8.0	-7.0	-6.0	-5.0	-4.0			
<b>Leukemia</b>															
CCRF-CEM	0.498	1.663	1.534	1.516	0.650	0.583	0.530	89	87	13	7	3	3.18E-7	> 1.00E-4	> 1.00E-4
RPMI-8226	1.007	2.386	2.340	2.247	1.301	1.384	0.891	97	90	21	27	-12	3.82E-7	5.04E-5	> 1.00E-4
<b>Non-Small Cell Lung Cancer</b>															
A549/ATCC	0.312	1.551	1.480	1.394	0.622	0.535	0.420	94	87	25	18	9	3.97E-7	> 1.00E-4	> 1.00E-4
EKVX	0.572	1.569	1.484	1.443	0.937	0.945	0.857	91	87	37	37	29	5.44E-7	> 1.00E-4	> 1.00E-4
HOP-62	0.435	1.148	1.194	1.031	0.646	0.640	0.596	106	84	30	29	23	4.19E-7	> 1.00E-4	> 1.00E-4
HOP-92	1.026	1.505	1.470	1.367	1.231	1.313	1.096	93	71	43	60	15		> 1.00E-4	> 1.00E-4
NCI-H226	0.679	1.622	1.560	1.410	0.817	0.629	0.574	93	77	15	-7	-15	2.73E-7	4.59E-6	> 1.00E-4
NCI-H23	0.483	1.316	1.233	1.152	0.680	0.703	0.531	90	80	24	26	6	3.42E-7	> 1.00E-4	> 1.00E-4
NCI-H322M	0.868	1.719	1.717	1.666	1.297	1.288	1.231	100	94	50	49	43	2.18E-6	> 1.00E-4	> 1.00E-4
NCI-H460	0.205	1.833	1.902	1.762	0.340	0.262	0.177	104	96	8	3	-14	3.33E-7	1.58E-5	> 1.00E-4
NCI-H522	0.735	1.706	1.751	1.465	0.882	0.823	0.675	105	75	15	9	-8	2.62E-7	3.33E-5	> 1.00E-4
<b>Colon Cancer</b>															
COLO 205	0.334	1.234	1.291	1.248	0.318	0.189	0.053	106	101	-5	-44	-84	3.05E-7	8.99E-7	1.44E-5
HCC-2998	0.389	1.314	1.270	1.185	0.640	0.427	0.326	95	86	27	4	-16	4.09E-7	1.58E-5	> 1.00E-4
HCT-116	0.140	1.233	1.228	1.154	0.477	0.303	0.253	100	93	31	15	10	4.90E-7	> 1.00E-4	> 1.00E-4
HCT-15	0.350	1.750	1.658	1.413	0.812	0.594	0.372	93	76	33	17	2	4.02E-7	> 1.00E-4	> 1.00E-4
HT29	0.227	1.386	1.459	1.408	0.331	0.303	0.229	106	102	9	7	.	3.62E-7	> 1.00E-4	> 1.00E-4
KM12	0.420	1.864	1.833	1.568	0.685	0.512	0.368	98	80	18	6	-13	3.04E-7	2.18E-5	> 1.00E-4
SW-620	0.247	1.640	1.544	1.374	0.434	0.458	0.416	93	81	13	15	12	2.87E-7	> 1.00E-4	> 1.00E-4
<b>CNS Cancer</b>															
SF-268	0.451	1.375	1.388	1.318	0.800	0.699	0.448	101	94	38	27	-1	6.05E-7	9.46E-5	> 1.00E-4
SF-295	0.583	1.993	1.923	1.565	0.709	0.741	0.719	95	70	9	11	10	2.11E-7	> 1.00E-4	> 1.00E-4
SF-539	0.670	1.917	1.909	1.783	0.607	0.526	0.630	99	89	-9	-21	-6	2.50E-7	8.02E-7	> 1.00E-4
SNB-19	0.458	1.686	1.618	1.564	0.850	0.811	0.717	94	90	32	29	21	4.88E-7	> 1.00E-4	> 1.00E-4
SNB-75	0.748	1.589	1.451	1.206	0.750	0.873	0.919	84	54	.	15	20	1.21E-7	> 1.00E-4	> 1.00E-4
U251	0.298	1.435	1.394	1.349	0.497	0.423	0.354	96	92	18	11	5	3.68E-7	> 1.00E-4	> 1.00E-4
<b>Melanoma</b>															
LOX IMVI	0.194	1.245	1.217	1.113	0.586	0.458	0.195	97	87	37	25	.	5.57E-7	> 1.00E-4	> 1.00E-4
MALME-3M	0.531	1.079	1.072	0.971	0.770	0.789	0.667	99	80	44	47	25	6.66E-7	> 1.00E-4	> 1.00E-4
M14	0.361	1.371	1.390	1.288	0.744	0.519	0.421	102	92	38	16	6	5.96E-7	> 1.00E-4	> 1.00E-4
MDA-MB-435	0.516	2.163	2.030	0.795	0.277	0.309	0.543	92	17	-46	-40	2	3.62E-8	.	> 1.00E-4
SK-MEL-2	0.869	1.680	1.753	1.694	1.111	1.206	0.970	109	102	30	42	12	5.25E-7	> 1.00E-4	> 1.00E-4
SK-MEL-28	0.441	1.275	1.222	0.976	0.670	0.721	0.662	94	64	27	34	26	2.42E-7	> 1.00E-4	> 1.00E-4
SK-MEL-5	0.295	2.243	2.152	1.181	0.556	0.525	0.171	95	45	13	12	-42	8.11E-8	1.66E-5	> 1.00E-4
UACC-257	0.653	1.405	1.329	1.217	1.010	1.006	0.790	90	75	47	47	18	8.07E-7	> 1.00E-4	> 1.00E-4
UACC-62	0.689	2.004	2.007	1.464	0.973	0.960	0.967	100	59	22	21	21	1.74E-7	> 1.00E-4	> 1.00E-4
<b>Ovarian Cancer</b>															
IGROV1	0.456	1.450	1.470	1.341	0.822	0.699	0.507	102	89	37	24	5	5.58E-7	> 1.00E-4	> 1.00E-4
OVCAR-3	0.552	1.454	1.503	1.366	0.289	0.223	0.312	105	90	-48	-60	-43	1.96E-7	4.51E-7	.
OVCAR-4	0.420	0.987	0.992	0.892	0.700	0.612	0.540	101	83	49	34	21	9.53E-7	> 1.00E-4	> 1.00E-4
OVCAR-5	0.527	1.367	1.374	1.359	0.777	0.748	0.619	101	99	30	26	11	5.10E-7	> 1.00E-4	> 1.00E-4
OVCAR-8	0.376	1.605	1.575	1.545	0.677	0.611	0.485	98	95	24	19	9	4.35E-7	> 1.00E-4	> 1.00E-4
NCI/ADR-RES	0.451	1.576	1.516	1.017	0.303	0.408	0.434	95	50	-33	-10	-4	1.01E-7	4.02E-7	> 1.00E-4
SK-OV-3	0.356	0.884	0.907	0.845	0.357	0.283	0.270	104	93	.	-21	-24	2.89E-7	1.02E-6	> 1.00E-4
<b>Renal Cancer</b>															
786-0	0.457	1.783	1.810	1.745	0.969	0.915	0.644	102	97	39	35	14	6.38E-7	> 1.00E-4	> 1.00E-4
A498	1.040	1.524	1.344	1.291	0.994	0.917	0.849	63	52	-4	-12	-18	1.08E-7	8.35E-7	> 1.00E-4
ACHN	0.403	1.575	1.619	1.484	1.068	0.782	0.530	104	92	57	32	11	1.88E-6	> 1.00E-4	> 1.00E-4
CAKI-1	0.595	1.939	1.881	1.527	0.872	1.040	0.736	96	69	21	33	10	2.49E-7	> 1.00E-4	> 1.00E-4
RXF 393	0.550	1.073	1.024	0.918	0.401	0.514	0.510	91	70	-27	-7	-7	1.62E-7	5.27E-7	> 1.00E-4
SN12C	0.449	1.553	1.513	1.478	0.809	0.721	0.489	96	93	33	25	4	5.16E-7	> 1.00E-4	> 1.00E-4
TK-10	0.708	1.517	1.538	1.504	1.125	1.128	0.905	103	98	52	52	24	1.17E-5	> 1.00E-4	> 1.00E-4
UO-31	0.540	1.434	1.355	1.367	0.946	0.854	0.650	91	93	45	35	12	8.00E-7	> 1.00E-4	> 1.00E-4
<b>Prostate Cancer</b>															
PC-3	0.483	1.234	1.174	1.087	0.689	0.683	0.594	92	80	27	27	15	3.75E-7	> 1.00E-4	> 1.00E-4
DU-145	0.333	1.196	1.239	1.257	0.459	0.441	0.391	105	107	15	12	7	4.14E-7	> 1.00E-4	> 1.00E-4
<b>Breast Cancer</b>															
MCF7	0.250	1.306	1.254	0.891	0.389	0.383	0.240	95	61	13	13	-4	1.68E-7	5.62E-5	> 1.00E-4
MDA-MB-231/ATCC	0.637	1.550	1.535	1.494	1.035	0.977	0.770	98	94	44	37	15	7.45E-7	> 1.00E-4	> 1.00E-4
HS 578T	0.814	1.639	1.581	1.445	0.805	0.858	0.924	93	77	-1	5	13	2.19E-7	.	> 1.00E-4
BT-549	0.679	1.575	1.602	1.597	1.217	0.867	0.518	103	102	60	21	-24	1.80E-6	2.95E-5	> 1.00E-4
T-47D	0.525	1.154	1.142	1.138	0.806	0.832	0.649	98	97	45	49	20	7.90E-7	> 1.00E-4	> 1.00E-4
MDA-MB-468	0.608	1.202	1.136	0.949	0.565	0.585	0.426	89	57	-7	-4	-30	1.30E-7	7.77E-7	> 1.00E-4

Mean Graphs

Report Date :December 15, 2011

Test Date :September 06, 2011

