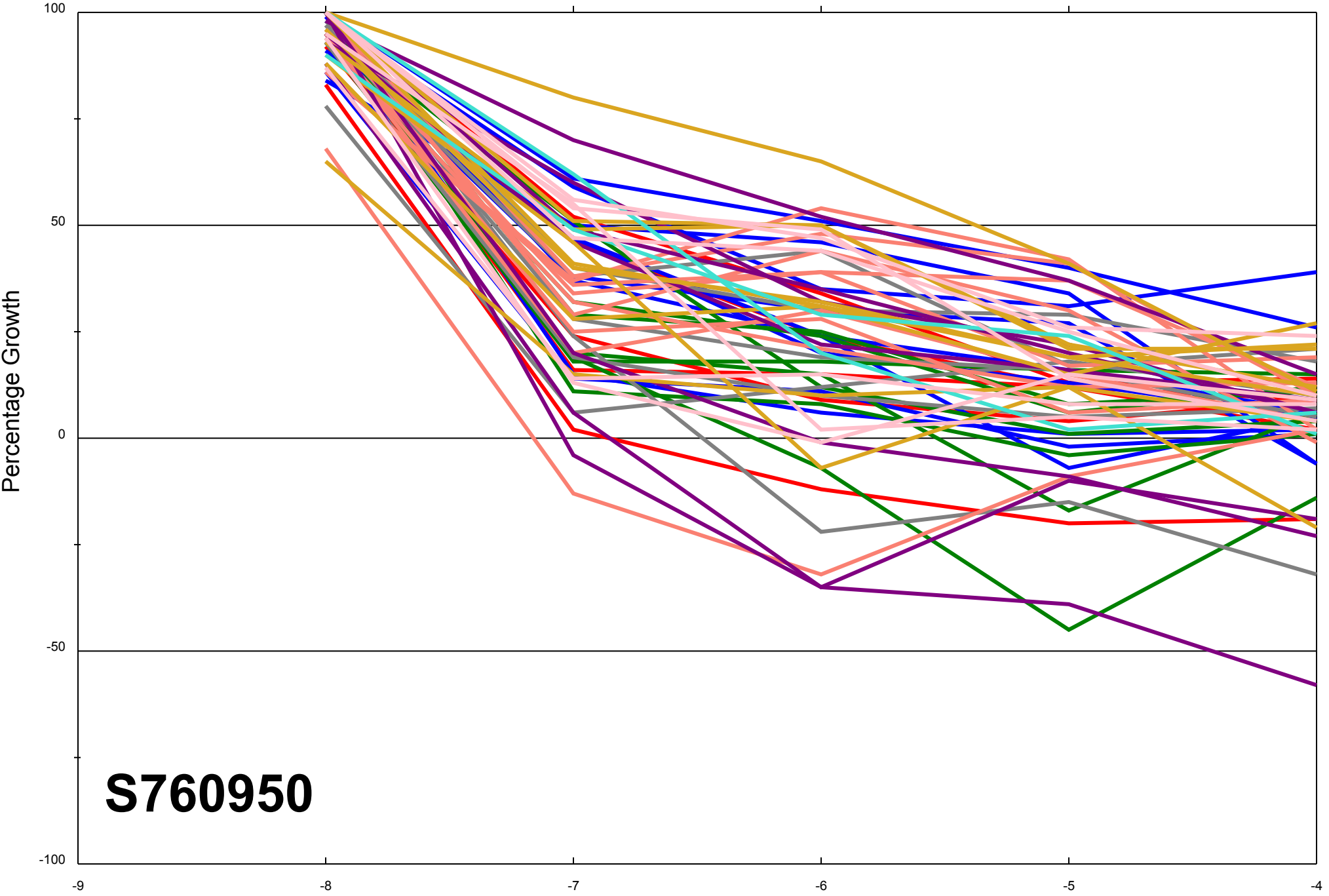


Dose Response Curves

Report Date:December 15, 2011

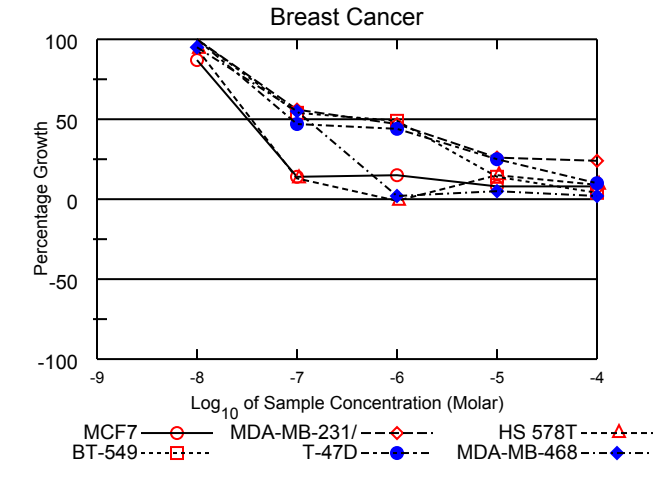
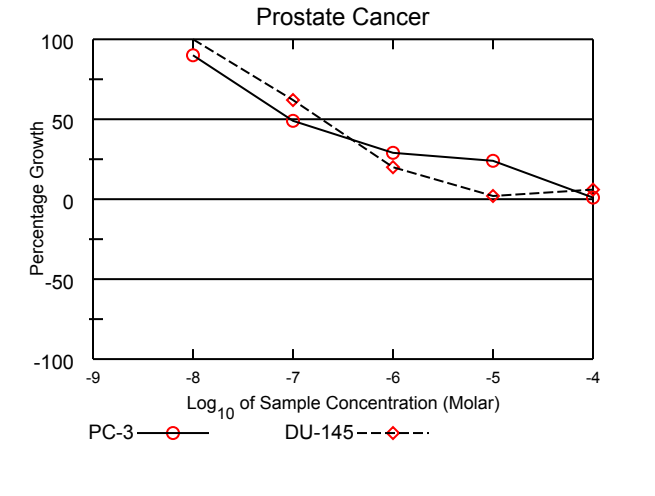
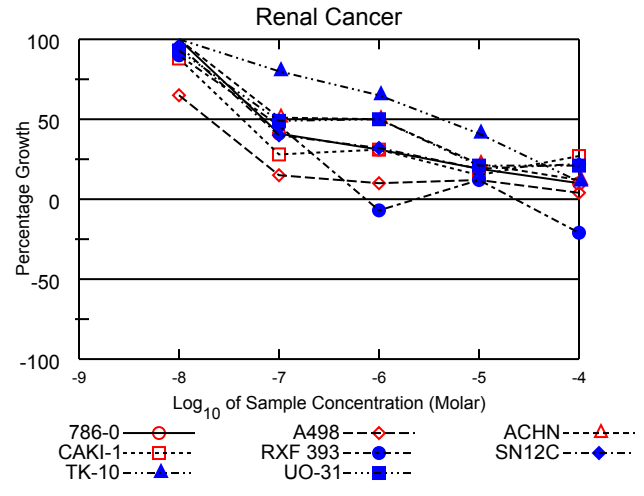
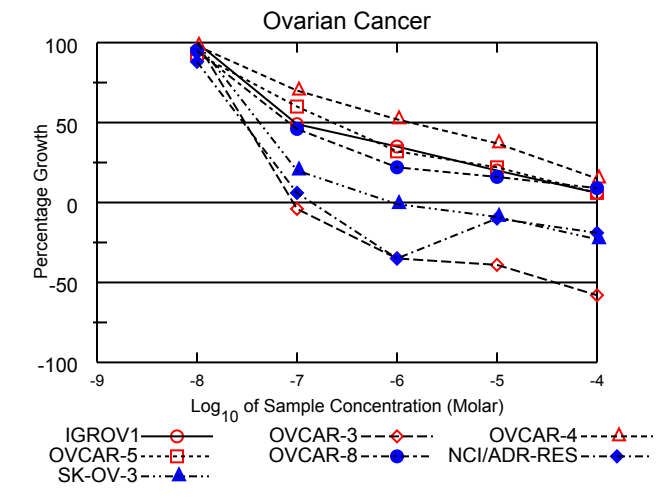
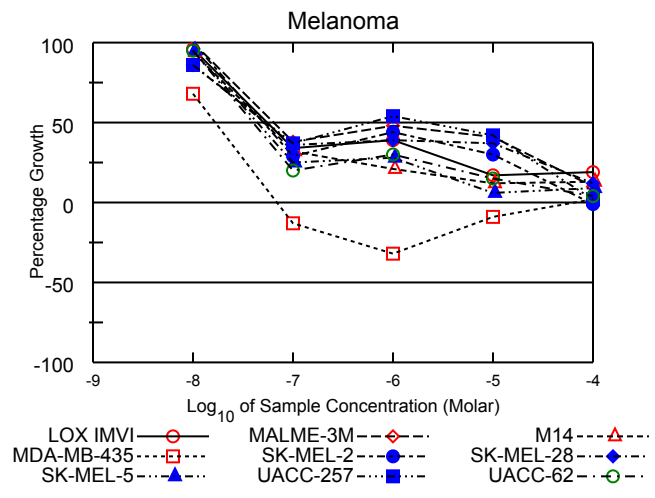
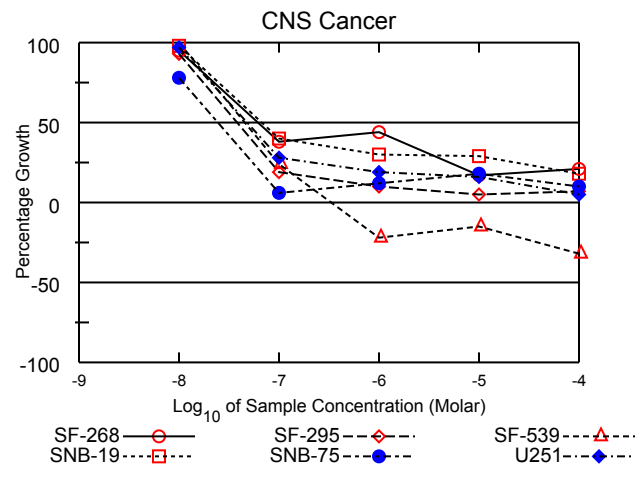
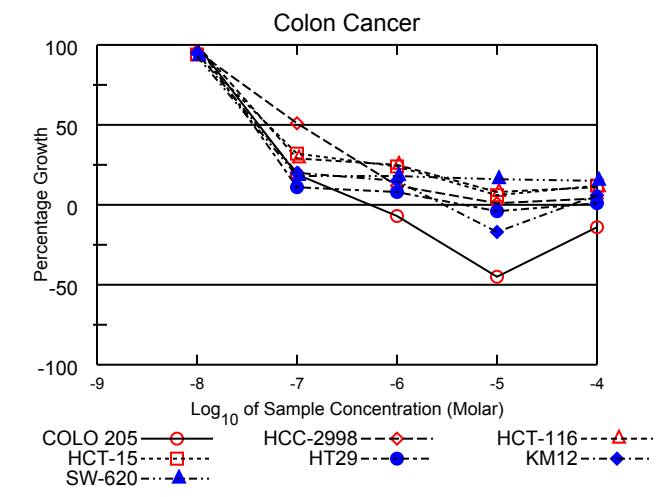
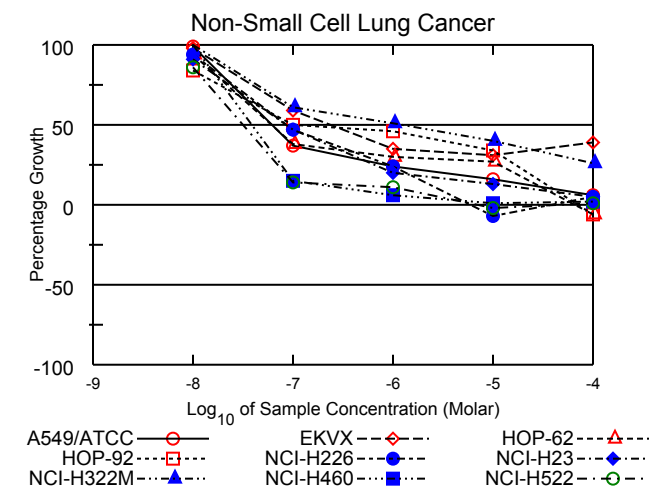
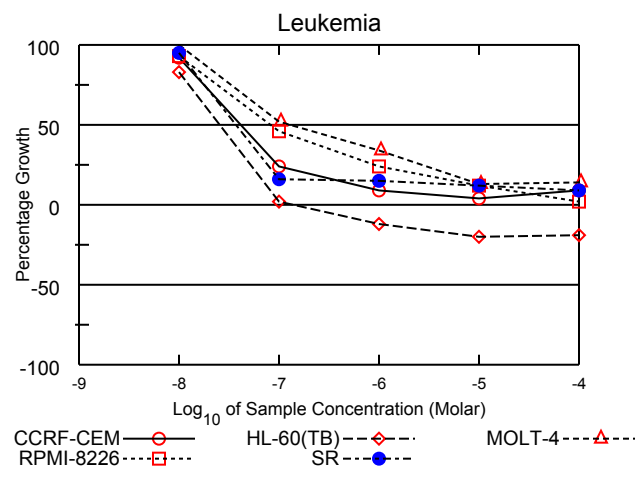
Test Date:September 06, 2011

All Cell Lines



S760950

Log₁₀ of Sample Concentration (Molar)



National Cancer Institute Developmental Therapeutics Program In-Vitro Testing Results

NSC : 760950 / 1	Experiment ID : 1109NS17	Test Type : 08	Units : Molar
Report Date : December 15, 2011	Test Date : September 06, 2011	QNS :	MC :
COMI : A4179/0178063 (107801)	Stain Reagent : SRB Dual-Pass Related	SSPL : 0YAR	

Panel/Cell Line	Log10 Concentration												GI50	TGI	LC50
	Time Zero	Ctrl	-8.0	-7.0	-6.0	-5.0	-4.0	-8.0	-7.0	-6.0	-5.0	-4.0			
Leukemia															
CCRF-CEM	0.498	1.694	1.599	0.783	0.600	0.551	0.605	92	24	9	4	9	4.13E-8	> 1.00E-4	> 1.00E-4
HL-60(TB)	0.758	2.282	2.031	0.794	0.669	0.610	0.618	83	2	-12	-20	-19	2.59E-8	1.47E-7	> 1.00E-4
MOLT-4	0.679	2.087	2.177	1.416	1.159	0.857	0.876	106	52	34	13	14	1.34E-7	> 1.00E-4	> 1.00E-4
RPMI-8226	1.007	2.389	2.293	1.644	1.339	1.167	1.037	93	46	24	12	2	8.26E-8	> 1.00E-4	> 1.00E-4
SR	0.200	0.723	0.698	0.283	0.277	0.262	0.247	95	16	15	12	9	3.72E-8	> 1.00E-4	> 1.00E-4
Non-Small Cell Lung Cancer															
A549/ATCC	0.312	1.607	1.596	0.786	0.621	0.516	0.389	99	37	24	16	6	6.10E-8	> 1.00E-4	> 1.00E-4
EKVX	0.572	1.570	1.549	1.158	0.918	0.884	0.960	98	59	35	31	39	2.29E-7	> 1.00E-4	> 1.00E-4
HOP-62	0.435	1.109	1.067	0.689	0.639	0.619	0.409	94	38	30	27	-6	6.03E-8	6.56E-5	> 1.00E-4
HOP-92	1.026	1.498	1.423	1.264	1.244	1.185	0.964	84	50	46	34	-6	1.23E-7	7.03E-5	> 1.00E-4
NCI-H226	0.679	1.611	1.559	1.118	0.902	0.631	0.727	94	47	24	-7	5	8.66E-8	.	> 1.00E-4
NCI-H23	0.483	1.314	1.238	0.872	0.649	0.592	0.524	91	47	20	13	5	8.45E-8	> 1.00E-4	> 1.00E-4
NCI-H322M	0.868	1.760	1.765	1.412	1.323	1.223	1.104	101	61	51	40	26	1.23E-6	> 1.00E-4	> 1.00E-4
NCI-H460	0.205	1.838	1.912	0.452	0.310	0.221	0.238	105	15	6	1	2	4.07E-8	> 1.00E-4	> 1.00E-4
NCI-H522	0.735	1.766	1.618	0.875	0.852	0.718	0.741	86	14	11	-2	1	3.12E-8	.	> 1.00E-4
Colon Cancer															
COLO 205	0.334	1.293	1.290	0.515	0.312	0.183	0.288	100	19	-7	-45	-14	4.11E-8	5.51E-7	> 1.00E-4
HCC-2998	0.389	1.307	1.275	0.854	0.497	0.394	0.429	96	51	12	1	4	1.04E-7	> 1.00E-4	> 1.00E-4
HCT-116	0.140	1.191	1.229	0.441	0.404	0.219	0.253	104	29	25	8	11	5.18E-8	> 1.00E-4	> 1.00E-4
HCT-15	0.350	1.767	1.687	0.797	0.691	0.438	0.519	94	32	24	6	12	5.09E-8	> 1.00E-4	> 1.00E-4
HT29	0.227	1.401	1.441	0.357	0.325	0.219	0.243	103	11	8	-4	1	3.79E-8	.	> 1.00E-4
KM12	0.420	1.960	1.877	0.735	0.652	0.349	0.515	95	20	15	-17	6	3.99E-8	.	> 1.00E-4
SW-620	0.247	1.672	1.571	0.500	0.506	0.473	0.458	93	18	18	16	15	3.72E-8	> 1.00E-4	> 1.00E-4
CNS Cancer															
SF-268	0.451	1.411	1.368	0.818	0.874	0.616	0.655	95	38	44	17	21	6.22E-8	> 1.00E-4	> 1.00E-4
SF-295	0.583	2.046	1.940	0.866	0.730	0.655	0.683	93	19	10	5	7	3.82E-8	> 1.00E-4	> 1.00E-4
SF-539	0.670	1.873	1.932	0.960	0.522	0.572	0.455	105	24	-22	-15	-32	4.78E-8	3.32E-7	> 1.00E-4
SNB-19	0.458	1.730	1.708	0.962	0.834	0.822	0.684	98	40	30	29	18	6.66E-8	> 1.00E-4	> 1.00E-4
SNB-75	0.748	1.751	1.535	0.804	0.868	0.933	0.847	78	6	12	18	10	2.46E-8	> 1.00E-4	> 1.00E-4
U251	0.298	1.508	1.474	0.641	0.528	0.486	0.356	97	28	19	16	5	4.85E-8	> 1.00E-4	> 1.00E-4
Melanoma															
LOX IMVI	0.194	1.261	1.214	0.555	0.612	0.371	0.402	96	34	39	17	19	5.47E-8	> 1.00E-4	> 1.00E-4
MALME-3M	0.531	1.085	1.091	0.740	0.795	0.758	0.588	101	38	48	41	10	6.39E-8	> 1.00E-4	> 1.00E-4
M14	0.361	1.368	1.305	0.681	0.575	0.481	0.493	94	32	21	12	13	5.09E-8	> 1.00E-4	> 1.00E-4
MDA-MB-435	0.516	2.203	1.662	0.451	0.352	0.468	0.548	68	-13	-32	-9	2	1.67E-8	.	> 1.00E-4
SK-MEL-2	0.869	1.684	1.706	1.106	1.228	1.116	0.859	103	29	44	30	-1	5.20E-8	9.19E-5	> 1.00E-4
SK-MEL-28	0.441	1.361	1.229	0.775	0.803	0.782	0.554	86	36	39	37	12	5.28E-8	> 1.00E-4	> 1.00E-4
SK-MEL-5	0.295	2.344	2.247	0.805	0.878	0.424	0.488	95	25	28	6	9	4.40E-8	> 1.00E-4	> 1.00E-4
UACC-257	0.653	1.429	1.322	0.944	1.074	0.977	0.672	86	37	54	42	2	.	> 1.00E-4	> 1.00E-4
UACC-62	0.689	2.106	2.033	0.969	1.111	0.903	0.750	95	20	30	15	4	3.95E-8	> 1.00E-4	> 1.00E-4
Ovarian Cancer															
IGROV1	0.456	1.462	1.492	0.947	0.807	0.654	0.515	103	49	35	20	6	9.50E-8	> 1.00E-4	> 1.00E-4
OVCAR-3	0.552	1.473	1.490	0.528	0.361	0.339	0.232	102	-4	-35	-39	-58	3.08E-8	9.10E-8	3.84E-5
OVCAR-4	0.420	1.074	1.060	0.875	0.763	0.665	0.516	98	70	52	37	15	1.46E-6	> 1.00E-4	> 1.00E-4
OVCAR-5	0.527	1.401	1.343	1.056	0.804	0.723	0.576	93	60	32	22	6	2.31E-7	> 1.00E-4	> 1.00E-4
OVCAR-8	0.376	1.626	1.557	0.954	0.652	0.582	0.491	95	46	22	16	9	8.35E-8	> 1.00E-4	> 1.00E-4
NCI/ADR-RES	0.451	1.561	1.427	0.521	0.294	0.407	0.368	88	6	-35	-10	-19	2.91E-8	1.42E-7	> 1.00E-4
SK-OV-3	0.356	0.877	0.876	0.461	0.352	0.323	0.275	100	20	-1	-9	-23	4.21E-8	8.85E-7	> 1.00E-4
Renal Cancer															
786-0	0.457	1.781	1.775	1.001	0.868	0.711	0.586	100	41	31	19	10	7.04E-8	> 1.00E-4	> 1.00E-4
A498	1.040	1.548	1.369	1.118	1.090	1.100	1.061	65	15	10	12	4	1.99E-8	> 1.00E-4	> 1.00E-4
ACHN	0.403	1.579	1.659	1.005	0.987	0.658	0.540	107	51	50	22	12	5.99E-7	> 1.00E-4	> 1.00E-4
CAKI-1	0.595	2.015	1.844	0.987	1.029	0.812	0.977	88	28	31	15	27	4.26E-8	> 1.00E-4	> 1.00E-4
RXF 393	0.550	1.153	1.093	0.828	0.510	0.621	0.435	90	46	-7	12	-21	8.12E-8	.	> 1.00E-4
SN12C	0.449	1.666	1.615	0.931	0.838	0.679	0.716	96	40	32	19	22	6.53E-8	> 1.00E-4	> 1.00E-4
TK-10	0.708	1.511	1.604	1.353	1.230	1.035	0.800	112	80	65	41	11	4.16E-6	> 1.00E-4	> 1.00E-4
UO-31	0.540	1.416	1.354	0.973	0.981	0.722	0.728	93	49	50	21	21	.	> 1.00E-4	> 1.00E-4
Prostate Cancer															
PC-3	0.483	1.249	1.176	0.858	0.702	0.670	0.491	90	49	29	24	1	9.41E-8	> 1.00E-4	> 1.00E-4
DU-145	0.333	1.228	1.290	0.892	0.512	0.348	0.383	107	62	20	2	6	1.97E-7	> 1.00E-4	> 1.00E-4
Breast Cancer															
MCF7	0.250	1.399	1.244	0.413	0.426	0.348	0.339	87	14	15	8	8	3.20E-8	> 1.00E-4	> 1.00E-4
MDA-MB-231/ATCC	0.637	1.596	1.618	1.172	1.085	0.891	0.871	102	56	47	26	24	4.34E-7	> 1.00E-4	> 1.00E-4
HS 578T	0.814	1.595	1.547	0.913	0.810	0.930	0.885	94	13	-1	15	9	3.47E-8	.	> 1.00E-4
BT-549	0.679	1.537	1.558	1.139	1.099	0.800	0.712	102	54	49	14	4	6.04E-7	> 1.00E-4	> 1.00E-4
T-47D	0.525	1.083	1.131	0.788	0.772	0.665	0.583	109	47	44	25	10	8.96E-8	> 1.00E-4	> 1.00E-4
MDA-MB-468	0.608	1.246	1.216	0.958	0.619	0.639	0.618	95	55	2	5	2	1.23E-7	> 1.00E-4	> 1.00E-4

Mean Graphs

Report Date :December 15, 2011

Test Date :September 06, 2011

