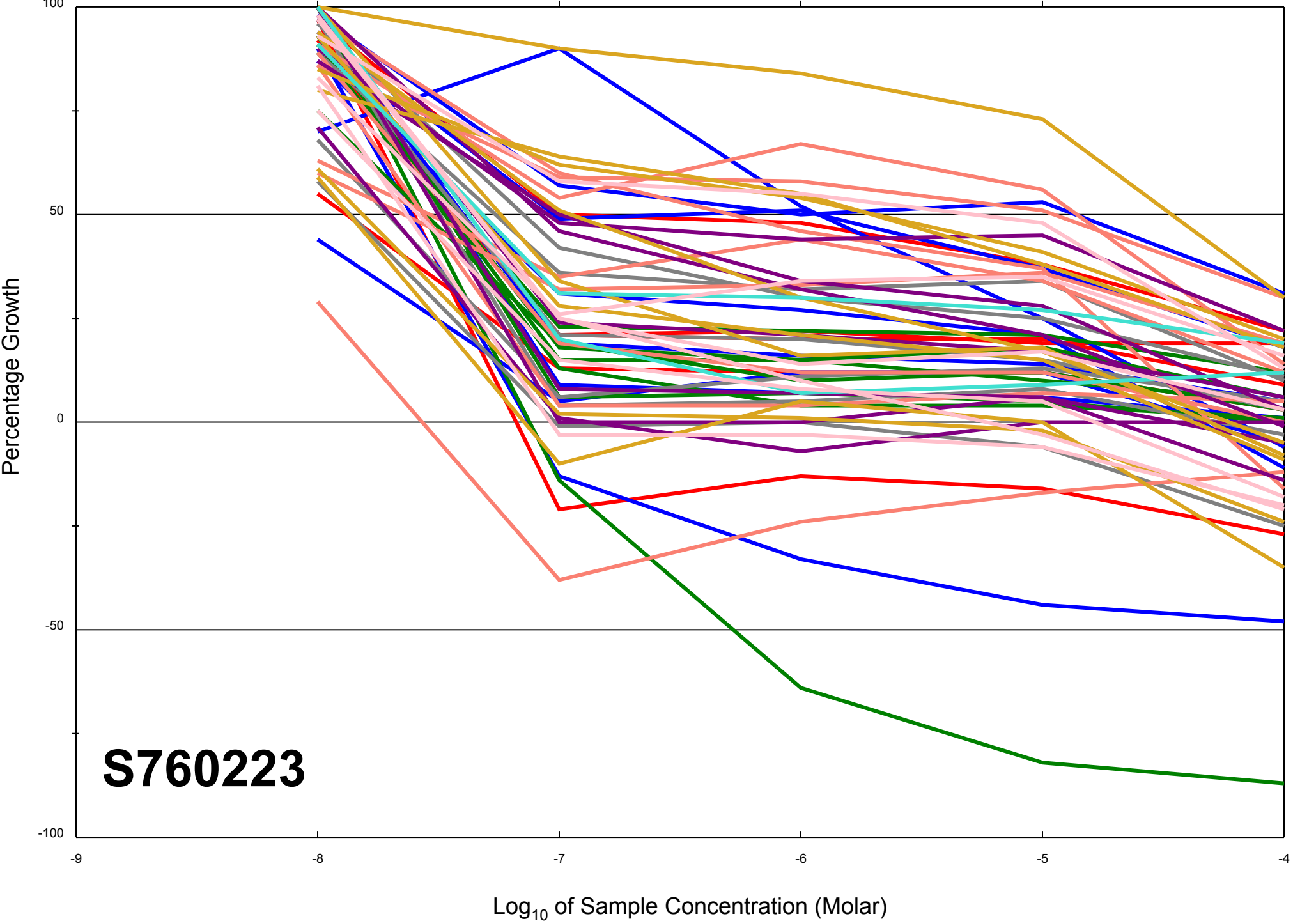


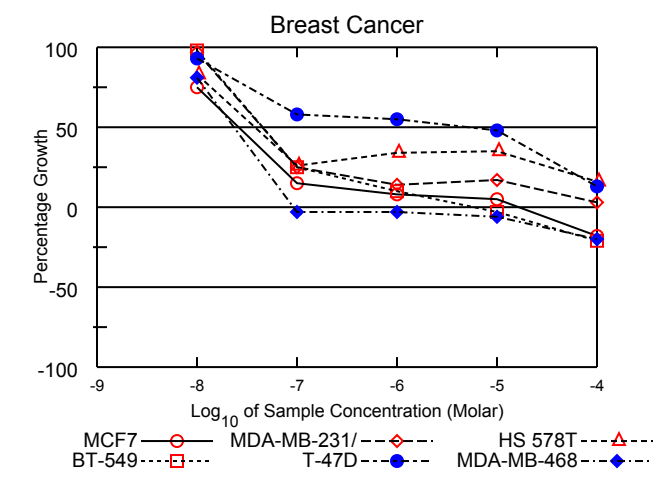
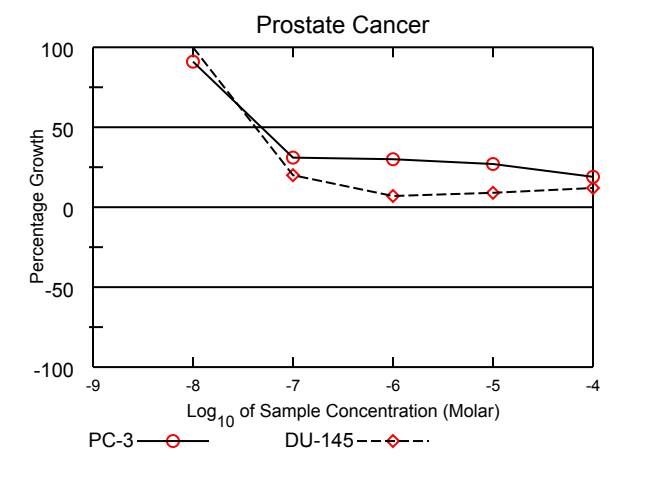
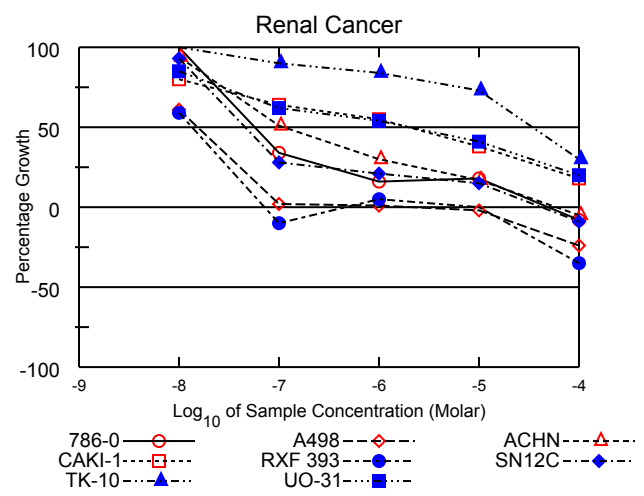
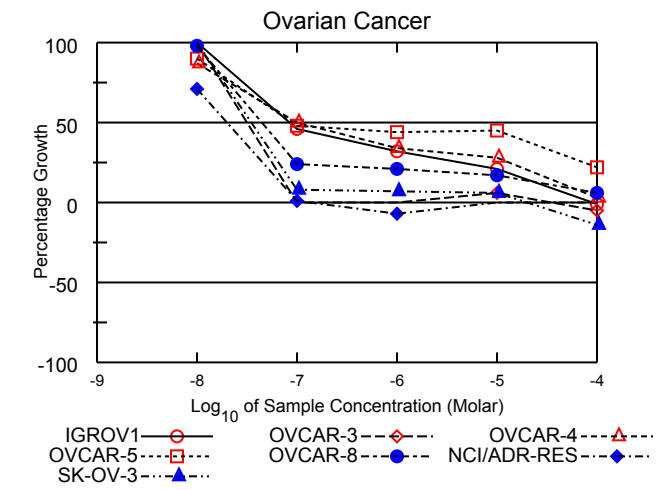
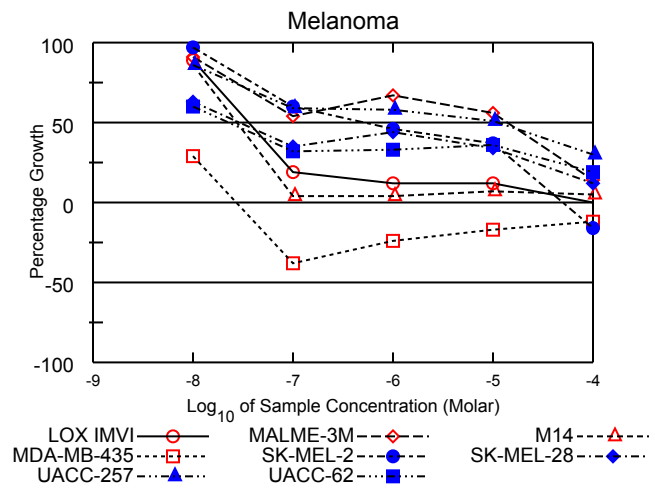
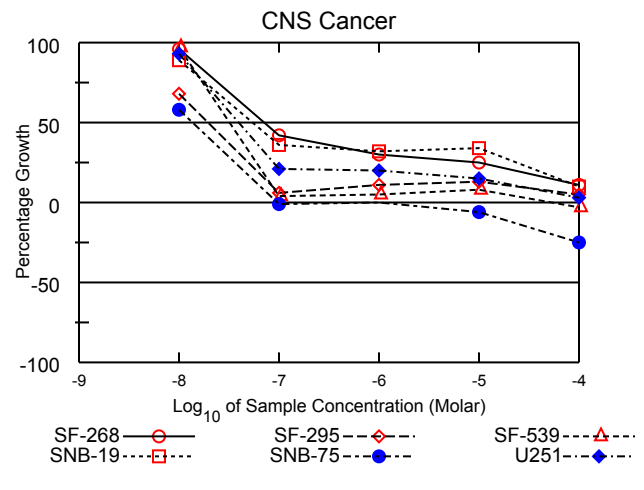
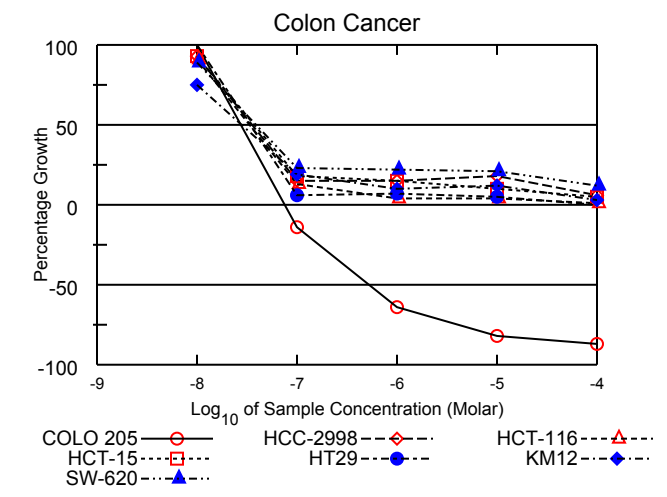
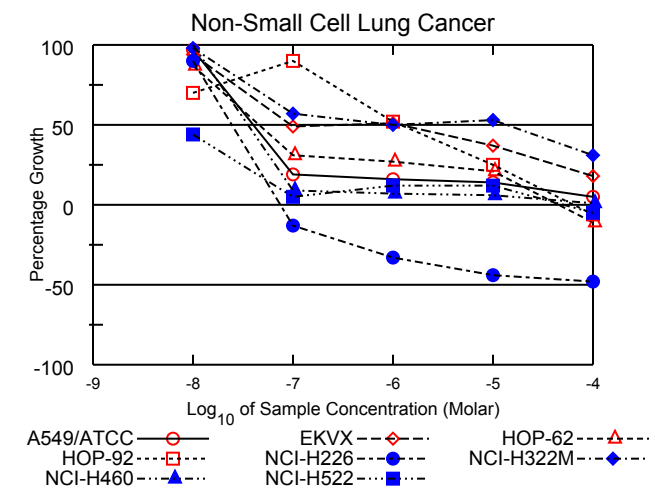
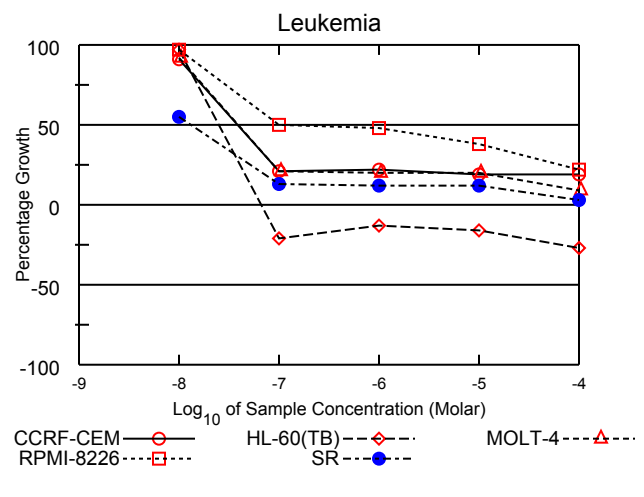
Dose Response Curves

Report Date:December 15, 2011

Test Date:August 01, 2011

All Cell Lines





National Cancer Institute Developmental Therapeutics Program In-Vitro Testing Results

NSC : 760223 / 1	Experiment ID : 1108NS96	Test Type : 08	Units : Molar
Report Date : December 15, 2011	Test Date : August 01, 2011	QNS :	MC :
COMI : A4536/0194162 (107438)	Stain Reagent : SRB Dual-Pass Related	SSPL : 0YAR	

Panel/Cell Line	Log10 Concentration												GI50	TGI	LC50
	Time Zero	Ctrl	-8.0	-7.0	Mean Optical Densities			Percent Growth							
				-6.0	-5.0	-4.0	-8.0	-7.0	-6.0	-5.0	-4.0				
Leukemia															
CCRF-CEM	0.516	1.806	1.692	0.793	0.795	0.758	0.759	91	21	22	19	19	3.90E-8	> 1.00E-4	> 1.00E-4
HL-60(TB)	0.896	2.752	2.691	0.711	0.783	0.751	0.651	97	-21	-13	-16	-27	2.50E-8	6.66E-8	> 1.00E-4
MOLT-4	0.792	2.246	2.132	1.103	1.082	1.078	0.919	92	21	20	20	9	3.94E-8	> 1.00E-4	> 1.00E-4
RPMI-8226	0.882	2.603	2.549	1.735	1.703	1.544	1.260	97	50	48	38	22	9.80E-8	> 1.00E-4	> 1.00E-4
SR	0.482	1.962	1.300	0.672	0.653	0.662	0.522	55	13	12	12	3	1.33E-8	> 1.00E-4	> 1.00E-4
Non-Small Cell Lung Cancer															
A549/ATCC	0.323	1.705	1.660	0.581	0.547	0.515	0.396	97	19	16	14	5	3.97E-8	> 1.00E-4	> 1.00E-4
EKVX	0.795	1.893	1.824	1.331	1.357	1.201	0.990	94	49	51	37	18	.	> 1.00E-4	> 1.00E-4
HOP-62	0.453	1.209	1.111	0.688	0.654	0.609	0.403	87	31	27	21	-11	4.59E-8	4.48E-5	> 1.00E-4
HOP-92	1.283	1.841	1.675	1.788	1.574	1.424	1.201	70	90	52	25	-6	1.20E-6	6.27E-5	> 1.00E-4
NCI-H226	0.762	1.653	1.567	0.660	0.508	0.426	0.394	90	-13	-33	-44	-48	2.45E-8	7.42E-8	> 1.00E-4
NCI-H322M	0.790	1.898	1.871	1.419	1.340	1.379	1.135	98	57	50	53	31	.	> 1.00E-4	> 1.00E-4
NCI-H460	0.250	2.423	2.487	0.456	0.394	0.387	0.265	103	9	7	6	1	3.68E-8	> 1.00E-4	> 1.00E-4
NCI-H522	0.827	2.300	1.481	0.896	1.006	1.002	0.789	44	5	12	12	-5	< 1.00E-8	5.25E-5	> 1.00E-4
Colon Cancer															
COLO 205	0.318	1.039	1.043	0.275	0.113	0.056	0.041	101	-14	-64	-82	-87	2.78E-8	7.61E-8	5.20E-7
HCC-2998	0.405	1.358	1.294	0.544	0.551	0.581	0.461	93	15	15	18	6	3.55E-8	> 1.00E-4	> 1.00E-4
HCT-116	0.169	1.428	1.312	0.335	0.225	0.214	0.179	91	13	4	4	1	3.36E-8	> 1.00E-4	> 1.00E-4
HCT-15	0.462	2.385	2.245	0.810	0.751	0.657	0.561	93	18	15	10	5	3.73E-8	> 1.00E-4	> 1.00E-4
HT29	0.187	1.181	1.187	0.250	0.254	0.242	0.191	101	6	7	5	.	3.44E-8	> 1.00E-4	> 1.00E-4
KM12	0.437	2.311	1.838	0.793	0.628	0.669	0.485	75	19	10	12	3	2.78E-8	> 1.00E-4	> 1.00E-4
SW-620	0.255	1.834	1.664	0.624	0.607	0.586	0.450	89	23	22	21	12	3.94E-8	> 1.00E-4	> 1.00E-4
CNS Cancer															
SF-268	0.430	1.443	1.399	0.855	0.737	0.685	0.543	96	42	30	25	11	7.09E-8	> 1.00E-4	> 1.00E-4
SF-295	0.662	2.390	1.835	0.760	0.852	0.889	0.750	68	6	11	13	5	1.94E-8	> 1.00E-4	> 1.00E-4
SF-539	0.870	2.089	2.054	0.923	0.929	0.964	0.842	97	4	5	8	-3	3.22E-8	5.06E-5	> 1.00E-4
SNB-19	0.506	1.650	1.520	0.920	0.875	0.895	0.618	89	36	32	34	10	5.45E-8	> 1.00E-4	> 1.00E-4
SNB-75	1.084	1.594	1.380	1.069	1.079	1.022	0.808	58	-1	.	-6	-25	1.37E-8	9.46E-8	> 1.00E-4
U251	0.270	1.403	1.325	0.513	0.500	0.438	0.305	93	21	20	15	3	3.99E-8	> 1.00E-4	> 1.00E-4
Melanoma															
LOX IMVI	0.169	1.271	1.149	0.378	0.302	0.307	0.173	89	19	12	12	.	3.60E-8	> 1.00E-4	> 1.00E-4
MALME-3M	0.631	1.281	1.220	0.985	1.066	0.997	0.721	91	54	67	56	14	1.41E-5	> 1.00E-4	> 1.00E-4
M14	0.367	1.358	1.223	0.406	0.411	0.439	0.412	86	4	4	7	5	2.76E-8	> 1.00E-4	> 1.00E-4
MDA-MB-435	0.391	1.845	0.814	0.242	0.296	0.326	0.343	29	-38	-24	-17	-12	< 1.00E-8	2.70E-8	> 1.00E-4
SK-MEL-2	0.684	1.234	1.217	1.012	0.940	0.888	0.574	97	60	46	37	-16	5.43E-7	4.97E-5	> 1.00E-4
SK-MEL-28	0.519	1.302	1.014	0.795	0.860	0.786	0.617	63	35	44	34	12	2.95E-8	> 1.00E-4	> 1.00E-4
UACC-257	0.760	1.981	1.809	1.482	1.473	1.378	1.121	86	59	58	51	30	1.07E-5	> 1.00E-4	> 1.00E-4
UACC-62	0.695	2.420	1.738	1.250	1.264	1.319	1.031	60	32	33	36	19	2.34E-8	> 1.00E-4	> 1.00E-4
Ovarian Cancer															
IGROV1	0.623	2.036	2.050	1.275	1.069	0.926	0.618	101	46	32	21	-1	8.50E-8	9.13E-5	> 1.00E-4
OVCAR-3	0.475	1.508	1.543	0.479	0.473	0.536	0.451	103	.	.	6	-5	3.30E-8	.	> 1.00E-4
OVCAR-4	0.576	1.071	1.005	0.826	0.743	0.715	0.591	87	50	34	28	3	1.06E-7	> 1.00E-4	> 1.00E-4
OVCAR-5	0.565	1.249	1.184	0.893	0.868	0.871	0.714	90	48	44	45	22	8.95E-8	> 1.00E-4	> 1.00E-4
OVCAR-8	0.349	1.607	1.582	0.649	0.617	0.564	0.430	98	24	21	17	6	4.44E-8	> 1.00E-4	> 1.00E-4
NCI/ADR-RES	0.504	1.778	1.413	0.515	0.467	0.510	0.507	71	1	-7	.	.	2.01E-8	.	> 1.00E-4
SK-OV-3	0.507	1.062	1.060	0.551	0.544	0.539	0.439	100	8	7	6	-14	3.48E-8	1.98E-5	> 1.00E-4
Renal Cancer															
786-0	0.638	2.084	2.084	1.126	0.865	0.897	0.585	100	34	16	18	-8	5.68E-8	4.80E-5	> 1.00E-4
A498	1.240	2.070	1.745	1.258	1.251	1.218	0.938	61	2	1	-2	-24	1.53E-8	2.68E-6	> 1.00E-4
ACHN	0.491	1.711	1.639	1.108	0.851	0.693	0.465	94	51	30	17	-5	1.07E-7	5.72E-5	> 1.00E-4
CAKI-1	0.731	2.023	1.765	1.560	1.447	1.225	0.958	80	64	55	38	18	2.06E-6	> 1.00E-4	> 1.00E-4
RXF 393	0.695	1.125	0.950	0.623	0.715	0.697	0.454	59	-10	5	.	-35	1.35E-8	.	> 1.00E-4
SN12C	0.595	2.069	1.969	1.001	0.910	0.814	0.542	93	28	21	15	-9	4.55E-8	4.22E-5	> 1.00E-4
TK-10	0.640	1.452	1.477	1.372	1.325	1.236	0.880	103	90	84	73	30	3.41E-5	> 1.00E-4	> 1.00E-4
UO-31	0.572	1.658	1.492	1.240	1.157	1.014	0.785	85	62	54	41	20	1.97E-6	> 1.00E-4	> 1.00E-4
Prostate Cancer															
PC-3	0.600	2.241	2.088	1.107	1.095	1.038	0.910	91	31	30	27	19	4.79E-8	> 1.00E-4	> 1.00E-4
DU-145	0.402	1.491	1.537	0.623	0.477	0.502	0.532	104	20	7	9	12	4.43E-8	> 1.00E-4	> 1.00E-4
Breast Cancer															
MCF7	0.309	1.525	1.217	0.488	0.409	0.375	0.255	75	15	8	5	-18	2.58E-8	1.71E-5	> 1.00E-4
MDA-MB-231/ATCC	0.623	1.429	1.404	0.823	0.733	0.760	0.650	97	25	14	17	3	4.47E-8	> 1.00E-4	> 1.00E-4
HS 578T	0.765	1.824	1.643	1.039	1.123	1.132	0.938	83	26	34	35	16	3.78E-8	> 1.00E-4	> 1.00E-4
BT-549	0.793	1.818	1.793	1.054	0.899	0.770	0.625	98	25	10	-3	-21	4.56E-8	6.04E-6	> 1.00E-4
T-47D	0.610	1.392	1.339	1.060	1.042	0.984	0.710	93	58	55	48	13	5.14E-6	> 1.00E-4	> 1.00E-4
MDA-MB-468	0.514	0.891	0.820	0.500	0.501	0.482	0.413	81	-3	-3	-6	-20	2.35E-8	9.28E-8	> 1.00E-4

Mean Graphs

Report Date :December 15, 2011

Test Date :August 01, 2011

