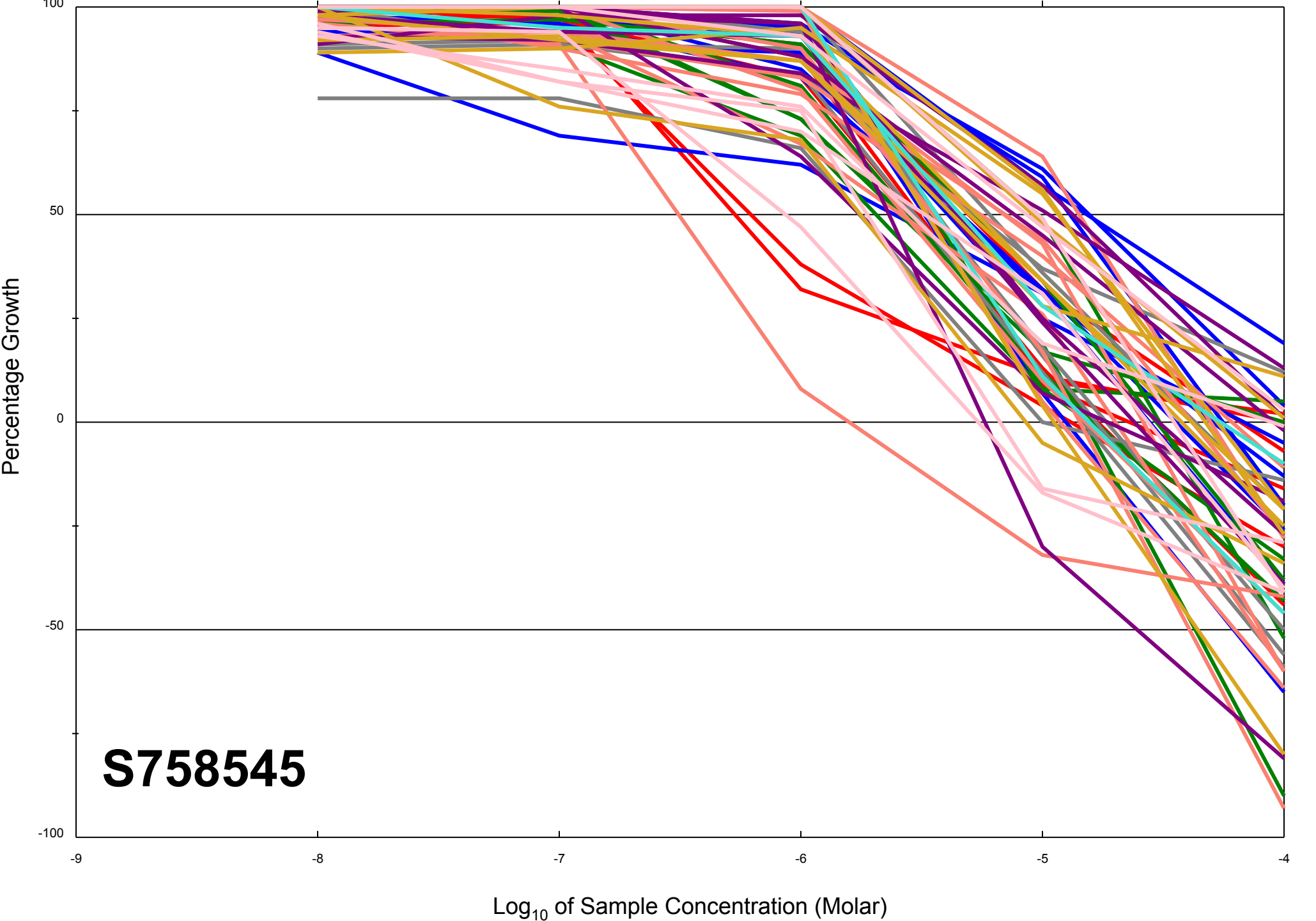


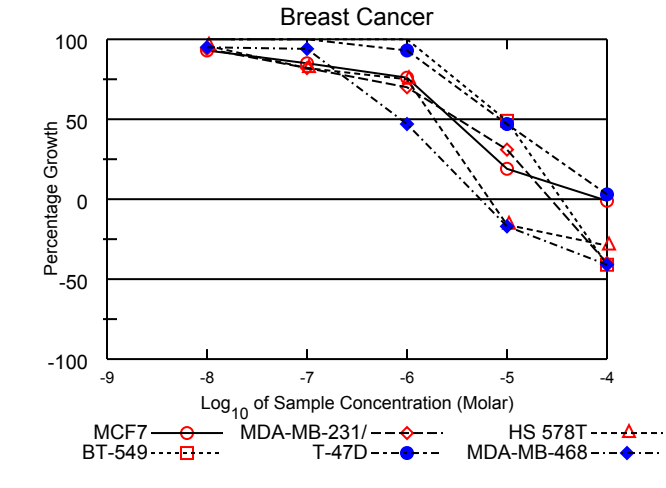
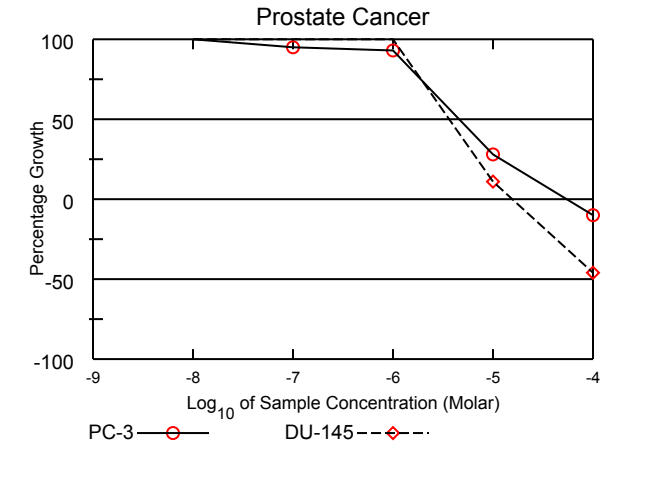
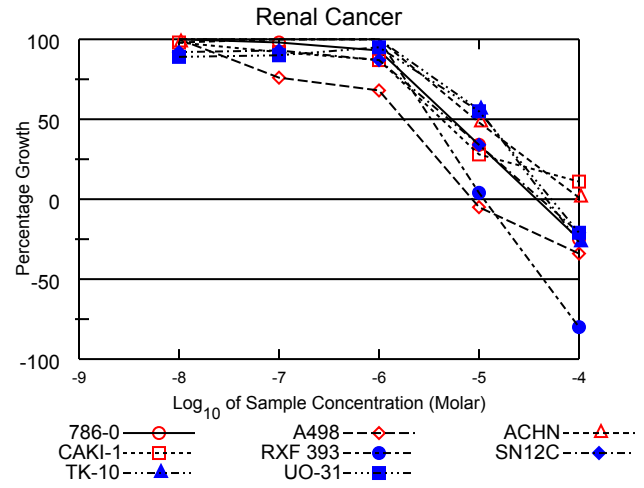
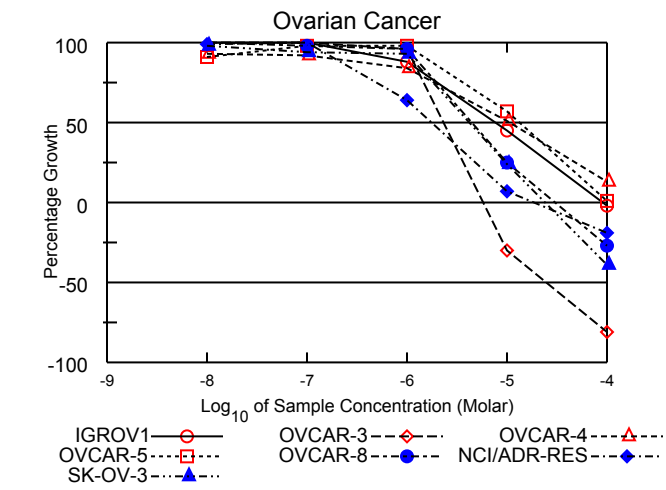
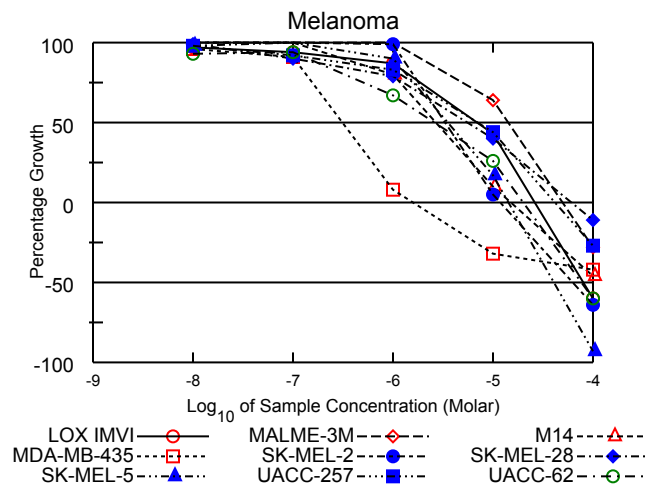
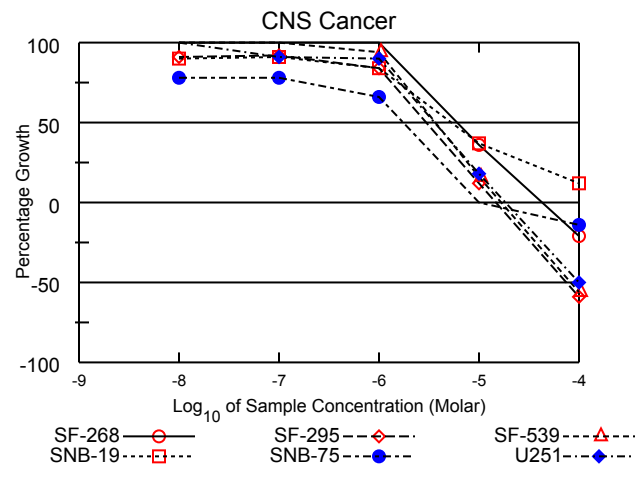
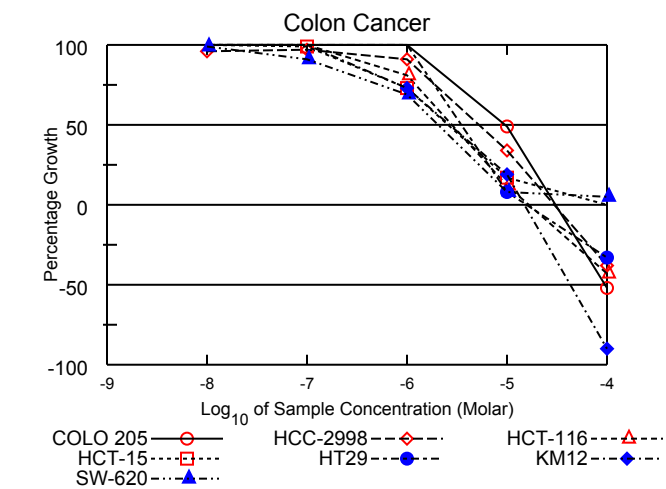
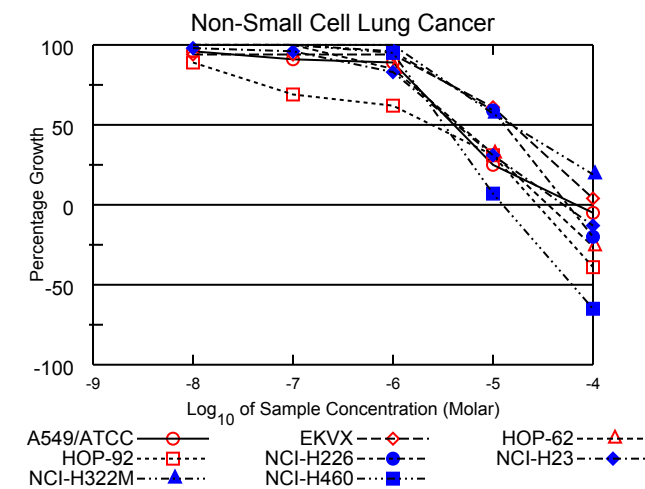
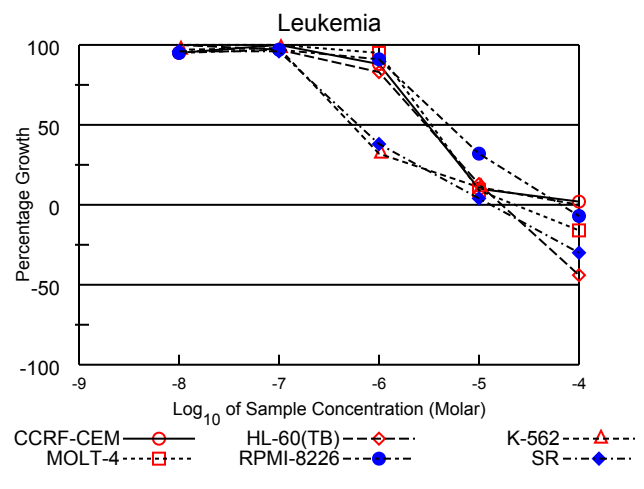
Dose Response Curves

Report Date:December 07, 2011

Test Date:June 27, 2011

All Cell Lines





National Cancer Institute Developmental Therapeutics Program In-Vitro Testing Results

NSC : 758545 / 1	Experiment ID : 1106NS70	Test Type : 08	Units : Molar
Report Date : December 07, 2011	Test Date : June 27, 2011	QNS :	MC :
COMI : A4471/0191199 (105295)	Stain Reagent : SRB Dual-Pass Related	SSPL : 0YAR	

Panel/Cell Line	Log10 Concentration												GI50	TGI	LC50	
	Time Zero	Mean Optical Densities						Percent Growth								
		Ctrl	-8.0	-7.0	-6.0	-5.0	-4.0	-8.0	-7.0	-6.0	-5.0	-4.0				
Leukemia																
CCRF-CEM	0.557	1.687	1.632	1.691	1.554	0.672	0.578	95	100	88	10	2	3.09E-6	> 1.00E-4	> 1.00E-4	
HL-60(TB)	0.977	2.777	2.806	2.729	2.464	1.207	0.551	102	97	83	13	-44	2.93E-6	1.68E-5	> 1.00E-4	
K-562	0.168	1.143	1.115	1.125	0.480	0.272	0.171	97	98	32	11	.	5.34E-7	> 1.00E-4	> 1.00E-4	
MOLT-4	0.522	1.622	1.693	1.679	1.568	0.624	0.436	107	105	95	9	-16	3.35E-6	2.29E-5	> 1.00E-4	
RPMI-8226	0.384	1.128	1.089	1.103	1.064	0.623	0.359	95	97	91	32	-7	4.98E-6	6.74E-5	> 1.00E-4	
SR	0.374	1.372	1.335	1.333	0.757	0.413	0.264	96	96	38	4	-30	6.28E-7	1.30E-5	> 1.00E-4	
Non-Small Cell Lung Cancer																
A549/ATCC	0.333	1.635	1.578	1.521	1.487	0.664	0.317	96	91	89	25	-5	4.08E-6	6.93E-5	> 1.00E-4	
EKVX	0.707	1.776	1.710	1.717	1.714	1.357	0.749	94	94	94	61	4	1.55E-5	> 1.00E-4	> 1.00E-4	
HOP-62	0.364	1.105	1.117	1.126	0.992	0.603	0.269	102	103	85	32	-26	4.60E-6	3.57E-5	> 1.00E-4	
HOP-92	1.098	1.471	1.432	1.356	1.330	1.212	0.668	89	69	62	31	-39	2.42E-6	2.74E-5	> 1.00E-4	
NCI-H226	0.752	1.481	1.524	1.509	1.455	1.179	0.602	106	104	96	59	-20	1.28E-5	5.56E-5	> 1.00E-4	
NCI-H23	0.627	1.843	1.820	1.796	1.638	1.003	0.545	98	96	83	31	-13	4.31E-6	5.03E-5	> 1.00E-4	
NCI-H322M	0.347	0.774	0.804	0.792	0.810	0.589	0.428	107	104	108	57	19	1.51E-5	> 1.00E-4	> 1.00E-4	
NCI-H460	0.224	1.821	1.941	1.857	1.747	0.330	0.080	107	102	95	7	-65	3.24E-6	1.24E-5	6.25E-5	
Colon Cancer																
COLO 205	0.246	1.278	1.329	1.311	1.425	0.747	0.119	105	103	114	49	-52	9.50E-6	3.04E-5	9.59E-5	
HCC-2998	0.650	2.335	2.275	2.284	2.188	1.225	0.404	96	97	91	34	-38	5.27E-6	2.98E-5	> 1.00E-4	
HCT-116	0.170	1.264	1.284	1.305	1.059	0.301	0.097	102	104	81	12	-43	2.82E-6	1.65E-5	> 1.00E-4	
HCT-15	0.310	1.870	1.866	1.857	1.444	0.577	0.310	100	99	73	17	.	2.56E-6	> 1.00E-4	> 1.00E-4	
HT29	0.223	1.227	1.260	1.256	1.246	0.299	0.150	103	103	102	8	-33	3.55E-6	1.53E-5	> 1.00E-4	
KM12	0.398	1.716	1.832	1.831	1.358	0.650	0.041	109	109	73	19	-90	2.66E-6	1.50E-5	4.32E-5	
SW-620	0.189	1.055	1.046	0.976	0.789	0.254	0.230	99	91	69	8	5	2.05E-6	> 1.00E-4	> 1.00E-4	
CNS Cancer																
SF-268	0.327	1.064	1.089	1.086	1.100	0.595	0.257	103	103	105	36	-21	6.32E-6	4.26E-5	> 1.00E-4	
SF-295	0.783	2.417	2.277	2.288	2.162	0.980	0.323	91	92	84	12	-59	2.99E-6	1.48E-5	7.51E-5	
SF-539	0.824	2.164	2.180	2.299	2.086	1.036	0.362	101	110	94	16	-56	3.66E-6	1.66E-5	8.23E-5	
SNB-19	0.436	1.491	1.386	1.394	1.326	0.825	0.559	90	91	84	37	12	5.29E-6	> 1.00E-4	> 1.00E-4	
SNB-75	0.617	1.381	1.213	1.212	1.118	0.615	0.533	78	78	66	.	-14	1.72E-6	9.86E-6	> 1.00E-4	
U251	0.291	1.211	1.224	1.124	1.118	0.455	0.146	101	91	90	18	-50	3.58E-6	1.83E-5	> 1.00E-4	
Melanoma																
LOX IMVI	0.314	1.975	1.919	1.880	1.765	1.026	0.127	97	94	87	43	-60	6.90E-6	2.62E-5	8.04E-5	
MALME-3M	0.544	0.857	0.856	0.860	0.857	0.744	0.392	100	101	100	64	-28	1.41E-5	4.95E-5	> 1.00E-4	
M14	0.369	1.336	1.375	1.352	1.144	0.465	0.199	104	102	80	10	-46	2.69E-6	1.50E-5	> 1.00E-4	
MDA-MB-435	0.384	1.787	1.736	1.663	0.501	0.261	0.224	96	91	8	-32	-42	3.14E-7	1.60E-6	> 1.00E-4	
SK-MEL-2	0.846	1.642	1.732	1.706	1.636	0.886	0.306	111	108	99	5	-64	3.33E-6	1.18E-5	6.29E-5	
SK-MEL-28	0.321	0.982	0.977	0.913	0.842	0.583	0.286	99	90	79	40	-11	5.42E-6	6.05E-5	> 1.00E-4	
SK-MEL-5	0.644	1.982	1.960	1.994	1.847	0.870	0.043	98	101	90	17	-93	3.52E-6	1.42E-5	4.04E-5	
UACC-257	0.691	1.385	1.370	1.333	1.269	0.994	0.506	98	92	83	44	-27	6.90E-6	4.16E-5	> 1.00E-4	
UACC-62	0.566	2.281	2.168	2.175	1.713	1.019	0.226	93	94	67	26	-60	2.61E-6	2.02E-5	7.65E-5	
Ovarian Cancer																
IGROV1	0.420	1.182	1.273	1.264	1.089	0.761	0.413	112	111	88	45	-2	7.54E-6	9.21E-5	> 1.00E-4	
OVCAR-3	0.433	1.080	1.152	1.123	1.055	0.302	0.083	111	107	96	-30	-81	2.32E-6	5.76E-6	2.45E-5	
OVCAR-4	0.396	1.431	1.360	1.347	1.267	0.922	0.532	93	92	84	51	13	1.05E-5	> 1.00E-4	> 1.00E-4	
OVCAR-5	0.467	1.239	1.166	1.224	1.226	0.910	0.477	91	98	98	57	1	1.35E-5	> 1.00E-4	> 1.00E-4	
OVCAR-8	0.311	1.281	1.291	1.258	1.245	0.557	0.227	101	98	96	25	-27	4.49E-6	3.04E-5	> 1.00E-4	
NCI/ADR-RES	0.532	1.609	1.603	1.606	1.219	0.610	0.434	99	100	64	7	-19	1.75E-6	1.91E-5	> 1.00E-4	
SK-OV-3	0.566	1.529	1.506	1.476	1.460	0.796	0.347	98	94	93	24	-39	4.17E-6	2.40E-5	> 1.00E-4	
Renal Cancer																
786-0	0.607	1.927	1.962	1.902	1.838	1.050	0.456	103	98	93	34	-25	5.31E-6	3.75E-5	> 1.00E-4	
A498	0.970	1.424	1.426	1.313	1.281	0.919	0.643	100	76	68	-5	-34	1.78E-6	8.49E-6	> 1.00E-4	
ACHN	0.438	1.711	1.688	1.749	1.749	1.048	0.445	98	103	103	48	1	9.17E-6	> 1.00E-4	> 1.00E-4	
CAKI-1	0.599	2.144	2.110	2.024	1.949	1.039	0.766	98	92	87	28	11	4.31E-6	> 1.00E-4	> 1.00E-4	
RXF 393	0.605	0.929	0.951	0.952	0.937	0.617	0.119	107	107	102	4	-80	3.40E-6	1.11E-5	4.36E-5	
SN12C	0.469	1.752	1.647	1.658	1.584	0.907	0.369	92	93	87	34	-21	5.00E-6	4.11E-5	> 1.00E-4	
TK-10	0.590	1.174	1.211	1.187	1.236	0.916	0.433	106	102	111	56	-27	1.18E-5	4.75E-5	> 1.00E-4	
UO-31	0.674	1.485	1.393	1.404	1.447	1.119	0.535	89	90	95	55	-21	1.16E-5	5.33E-5	> 1.00E-4	
Prostate Cancer																
PC-3	0.524	1.638	1.635	1.578	1.556	0.831	0.472	100	95	93	28	-10	4.52E-6	5.43E-5	> 1.00E-4	
DU-145	0.342	1.095	1.135	1.157	1.130	0.428	0.185	105	108	105	11	-46	3.85E-6	1.58E-5	> 1.00E-4	
Breast Cancer																
MCF7	0.212	1.219	1.144	1.070	0.977	0.403	0.209	93	85	76	19	-1	2.85E-6	8.52E-5	> 1.00E-4	
MDA-MB-231/ATCC	0.437	1.088	1.046	0.974	0.894	0.641	0.263	94	82	70	31	-40	3.32E-6	2.76E-5	> 1.00E-4	
HS 578T	0.898	1.305	1.288	1.230	1.205	0.755	0.639	96	82	75	-16	-29	1.90E-6	6.69E-6	> 1.00E-4	
BT-549	0.905	1.708	1.749	1.769	1.705	1.302	0.537	105	108	100	49	-41	9.73E-6	3.53E-5	> 1.00E-4	
T-47D	0.448	1.243	1.294	1.267	1.186	0.823	0.469	106	103	93	47	3	8.64E-6	> 1.00E-4	> 1.00E-4	
MDA-MB-468	0.682	1.416	1.383	1.371	1.024	0.569	0.399	95	94	47	-17	-41	8.44E-7	5.46E-6	> 1.00E-4	

Mean Graphs

Report Date :December 07, 2011

Test Date :June 27, 2011

