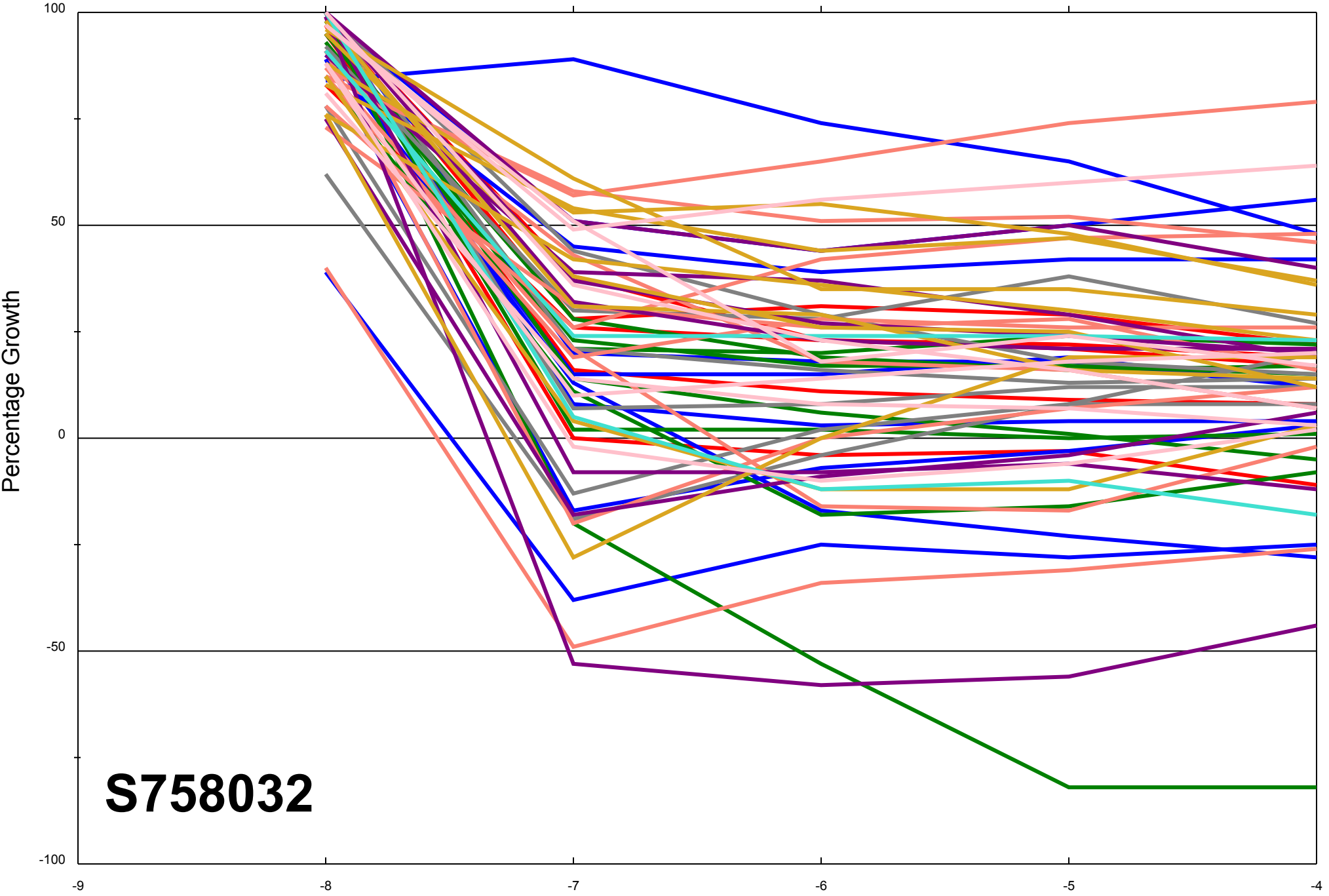


Dose Response Curves

Report Date:December 06, 2011

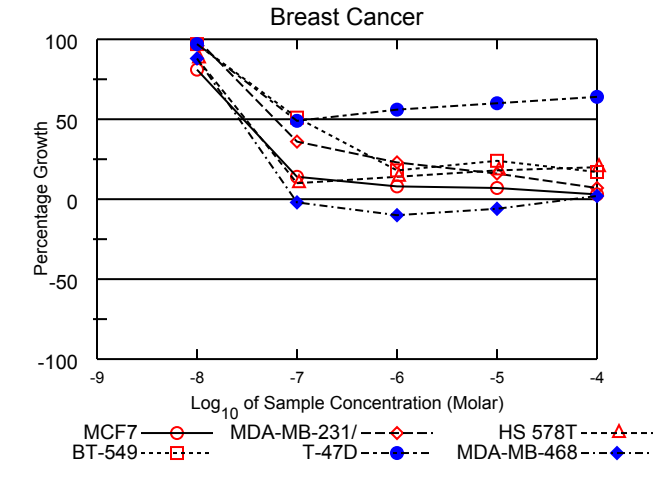
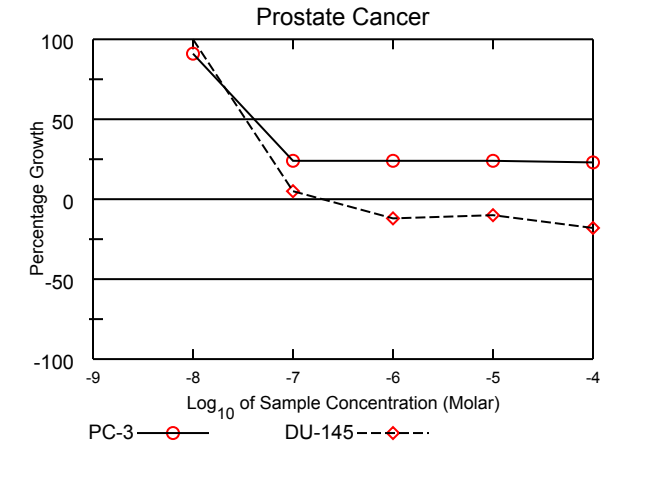
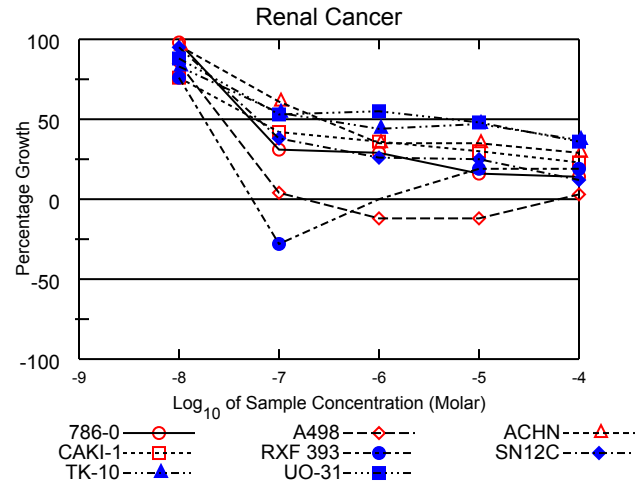
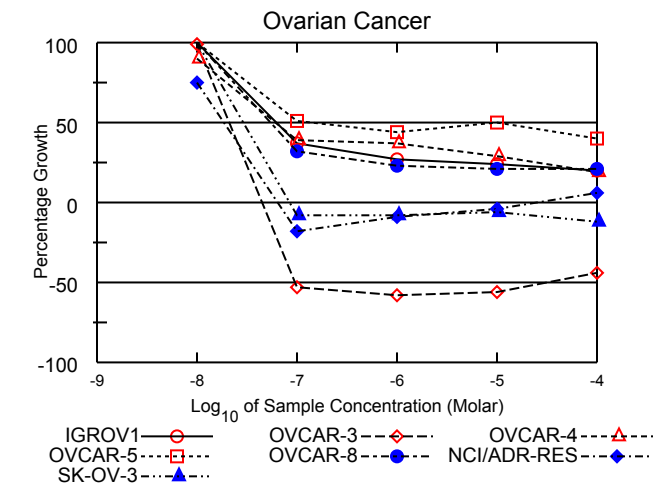
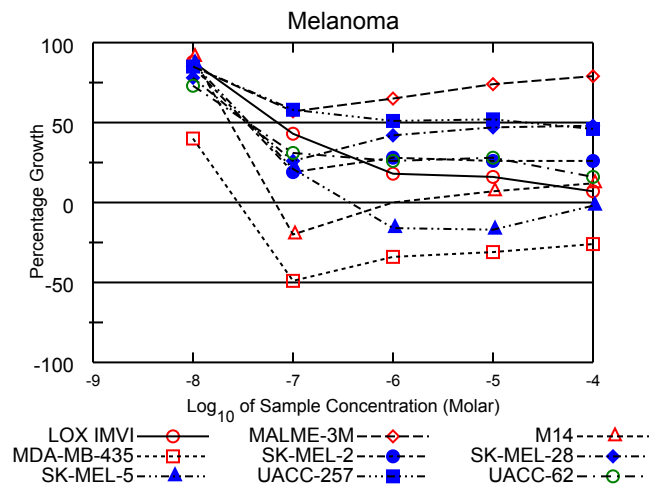
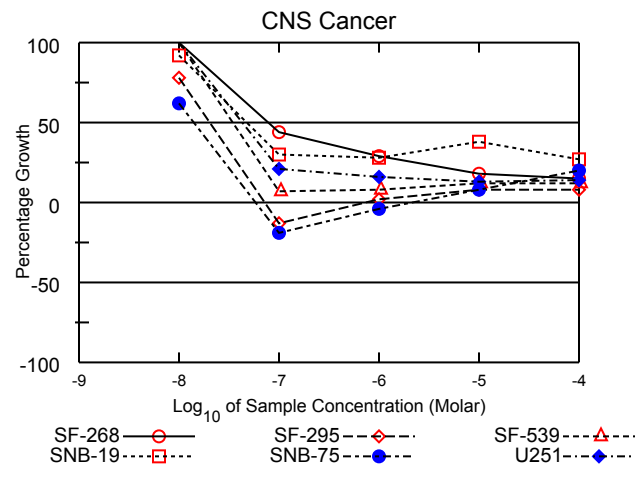
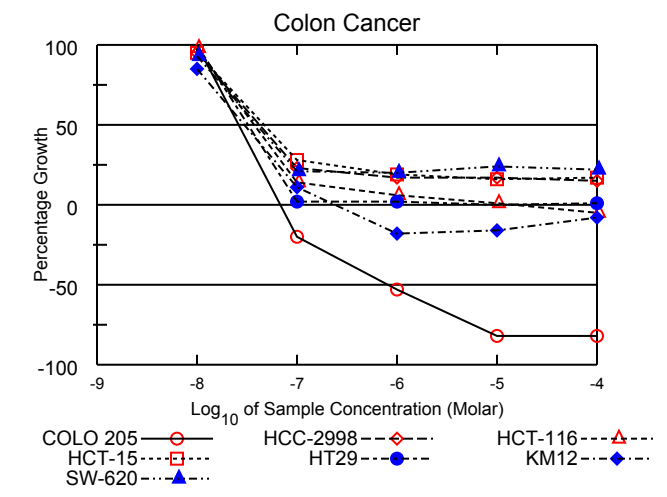
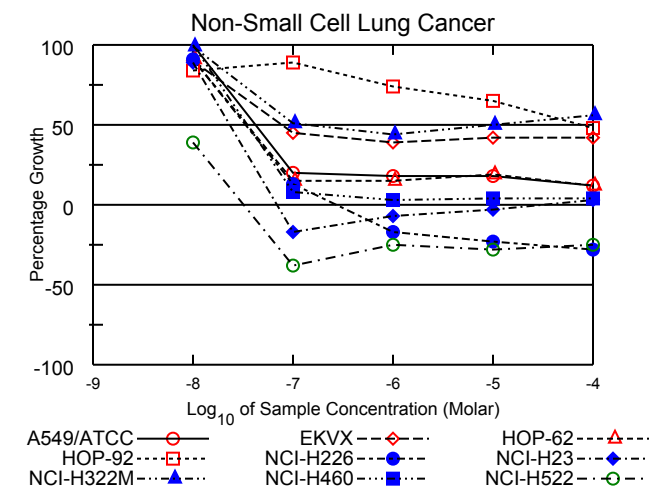
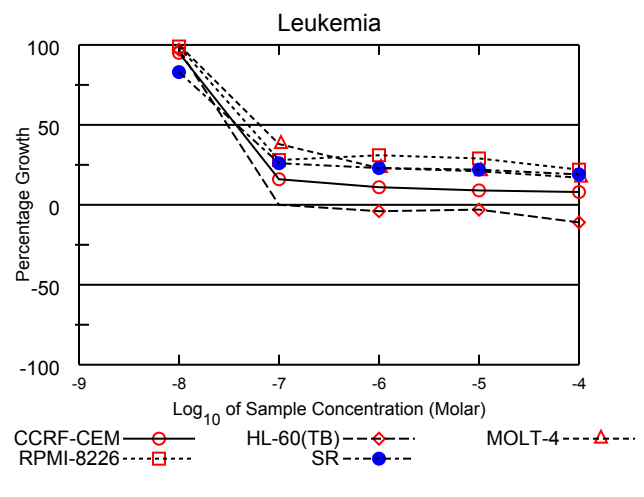
Test Date:August 08, 2011

All Cell Lines



**S758032**

Log<sub>10</sub> of Sample Concentration (Molar)



# National Cancer Institute Developmental Therapeutics Program In-Vitro Testing Results

NSC : 758032 / 1	Experiment ID : 1108RS99	Test Type : 08	Units : Molar
Report Date : December 06, 2011	Test Date : August 08, 2011	QNS :	MC :
COMI : NMR/19320136 (104814)	Stain Reagent : SRB Dual-Pass Related	SSPL : 0YAR	

Panel/Cell Line	Log10 Concentration												GI50	TGI	LC50
	Time Zero	Ctrl	-8.0	-7.0	-6.0	-5.0	-4.0	-8.0	-7.0	-6.0	-5.0	-4.0			
Leukemia															
CCRF-CEM	0.251	1.267	1.218	0.410	0.364	0.342	0.334	95	16	11	9	8	3.70E-8	> 1.00E-4	> 1.00E-4
HL-60(TB)	0.563	2.384	2.327	0.561	0.539	0.547	0.500	97	.	-4	-3	-11	3.03E-8	> 9.90E-8	> 1.00E-4
MOLT-4	0.373	1.696	1.739	0.872	0.677	0.645	0.598	103	38	23	21	17	6.50E-8	> 1.00E-4	> 1.00E-4
RPMI-8226	0.635	1.713	1.702	0.932	0.968	0.946	0.872	99	28	31	29	22	4.85E-8	> 1.00E-4	> 1.00E-4
SR	0.140	0.639	0.553	0.270	0.255	0.251	0.237	83	26	23	22	19	3.78E-8	> 1.00E-4	> 1.00E-4
Non-Small Cell Lung Cancer															
A549/ATCC	0.362	1.610	1.665	0.617	0.587	0.586	0.515	104	20	18	18	12	4.44E-8	> 1.00E-4	> 1.00E-4
EKVX	0.761	1.707	1.611	1.188	1.127	1.163	1.162	90	45	39	42	42	7.78E-8	> 1.00E-4	> 1.00E-4
HOP-62	0.401	1.119	1.054	0.512	0.512	0.535	0.488	91	15	15	19	12	3.49E-8	> 1.00E-4	> 1.00E-4
HOP-92	1.007	1.350	1.295	1.312	1.260	1.230	1.171	84	89	74	65	48	7.30E-5	> 1.00E-4	> 1.00E-4
NCI-H226	0.778	1.802	1.709	0.910	0.650	0.599	0.562	91	13	-17	-23	-28	3.34E-8	2.74E-7	> 1.00E-4
NCI-H23	0.625	1.847	1.717	0.521	0.584	0.605	0.659	89	-17	-7	-3	3	2.35E-8	.	> 1.00E-4
NCI-H322M	0.719	1.549	1.543	1.143	1.080	1.138	1.184	99	51	44	50	56	.	> 1.00E-4	> 1.00E-4
NCI-H460	0.153	1.317	1.363	0.248	0.189	0.201	0.202	104	8	3	4	4	3.66E-8	> 1.00E-4	> 1.00E-4
NCI-H522	0.615	1.571	0.984	0.381	0.463	0.441	0.459	39	-38	-25	-28	-25	< 1.00E-8	3.18E-8	> 1.00E-4
Colon Cancer															
COLO 205	0.255	0.846	0.882	0.204	0.120	0.046	0.046	106	-20	-53	-82	-82	2.78E-8	6.92E-8	8.13E-7
HCC-2998	0.475	1.630	1.578	0.736	0.676	0.672	0.654	95	23	17	17	15	4.21E-8	> 1.00E-4	> 1.00E-4
HCT-116	0.194	1.519	1.488	0.386	0.270	0.208	0.185	98	14	6	1	-5	3.74E-8	1.53E-5	> 1.00E-4
HCT-15	0.326	1.880	1.810	0.766	0.618	0.578	0.586	95	28	19	16	17	4.75E-8	> 1.00E-4	> 1.00E-4
HT29	0.224	1.213	1.237	0.240	0.241	0.227	0.229	102	2	2	.	1	3.31E-8	> 1.00E-4	> 1.00E-4
KM12	0.323	1.354	1.197	0.436	0.264	0.270	0.298	85	11	-18	-16	-8	2.96E-8	2.36E-7	> 1.00E-4
SW-620	0.172	1.058	0.993	0.356	0.347	0.383	0.370	93	21	20	24	22	3.92E-8	> 1.00E-4	> 1.00E-4
CNS Cancer															
SF-268	0.378	1.159	1.162	0.721	0.603	0.520	0.499	100	-43	29	18	15	7.80E-8	> 1.00E-4	> 1.00E-4
SF-295	0.655	2.086	1.767	0.572	0.685	0.767	0.767	78	14	2	8	8	2.02E-8	.	> 1.00E-4
SF-539	0.599	1.684	1.686	0.672	0.682	0.727	0.733	100	7	8	12	12	3.44E-8	> 1.00E-4	> 1.00E-4
SNB-19	0.475	1.549	1.465	0.800	0.775	0.879	0.761	92	30	28	38	27	4.79E-8	> 1.00E-4	> 1.00E-4
SNB-75	0.910	1.342	1.176	0.734	0.877	0.944	0.998	62	-19	-4	8	20	1.39E-8	.	> 1.00E-4
U251	0.342	1.359	1.355	0.555	0.507	0.479	0.480	100	21	16	13	14	4.27E-8	> 1.00E-4	> 1.00E-4
Melanoma															
LOX IMVI	0.388	2.099	1.901	1.118	0.691	0.664	0.511	88	43	18	16	7	6.91E-8	> 1.00E-4	> 1.00E-4
MALME-3M	0.723	1.343	1.251	1.077	1.124	1.184	1.215	85	57	65	74	79	> 1.00E-4	> 1.00E-4	> 1.00E-4
M14	0.388	1.398	1.303	0.310	0.393	0.464	0.507	91	-20	.	7	12	2.33E-8	.	> 1.00E-4
MDA-MB-435	0.444	1.785	0.980	0.225	0.292	0.308	0.330	40	-49	-34	-31	-26	< 1.00E-8	2.80E-8	> 1.00E-4
SK-MEL-2	0.714	1.176	1.109	0.803	0.842	0.833	0.834	85	19	28	26	26	3.43E-8	> 1.00E-4	> 1.00E-4
SK-MEL-28	0.435	1.077	0.935	0.600	0.707	0.734	0.744	78	26	42	47	48	3.42E-8	> 1.00E-4	> 1.00E-4
SK-MEL-5	0.614	2.415	2.190	1.000	0.516	0.512	0.600	87	21	-16	-17	-2	3.69E-8	3.74E-7	> 1.00E-4
UACC-257	0.884	1.691	1.570	1.352	1.295	1.303	1.256	85	58	51	52	46	2.13E-5	> 1.00E-4	> 1.00E-4
UACC-62	0.568	2.244	1.793	1.082	1.006	1.040	0.834	73	31	26	28	16	3.50E-8	> 1.00E-4	> 1.00E-4
Ovarian Cancer															
IGROV1	0.428	1.520	1.528	0.832	0.726	0.694	0.646	101	37	27	24	20	6.24E-8	> 1.00E-4	> 1.00E-4
OVCAR-3	0.347	0.905	0.898	0.162	0.146	0.153	0.195	99	-53	-58	-56	-44	2.09E-8	4.46E-8	.
OVCAR-4	0.543	0.998	0.951	0.719	0.710	0.676	0.631	90	39	37	29	19	5.98E-8	> 1.00E-4	> 1.00E-4
OVCAR-5	0.467	1.255	1.262	0.873	0.811	0.861	0.780	101	51	44	50	40	1.53E-7	> 1.00E-4	> 1.00E-4
OVCAR-8	0.433	1.488	1.529	0.767	0.676	0.651	0.652	104	32	23	21	21	5.56E-8	> 1.00E-4	> 1.00E-4
NCI/ADR-RES	0.455	1.512	1.249	0.372	0.415	0.439	0.515	75	-18	-9	-4	6	1.86E-8	.	> 1.00E-4
SK-OV-3	0.536	1.132	1.135	0.496	0.495	0.502	0.472	100	-8	-8	-6	-12	2.93E-8	8.51E-8	> 1.00E-4
Renal Cancer															
786-0	0.680	2.291	2.258	1.172	1.152	0.931	0.898	98	31	29	16	14	5.14E-8	> 1.00E-4	> 1.00E-4
A498	1.031	1.644	1.554	1.056	0.911	0.906	1.047	85	4	-12	-12	3	2.72E-8	.	> 1.00E-4
ACHN	0.269	1.191	1.156	0.830	0.596	0.593	0.534	96	61	35	35	29	2.67E-7	> 1.00E-4	> 1.00E-4
CAKI-1	0.902	2.197	1.880	1.447	1.374	1.293	1.198	76	42	36	30	23	5.80E-8	> 1.00E-4	> 1.00E-4
RXF 393	0.810	1.355	1.226	0.582	0.809	0.915	0.915	76	-28	.	19	19	1.78E-8	.	> 1.00E-4
SN12C	0.456	1.787	1.724	0.967	0.796	0.784	0.614	95	38	26	25	12	6.25E-8	> 1.00E-4	> 1.00E-4
TK-10	0.760	1.330	1.235	1.069	1.013	1.029	0.973	83	54	44	47	37	2.68E-7	> 1.00E-4	> 1.00E-4
UO-31	0.627	1.460	1.359	1.072	1.088	1.030	0.927	88	53	55	48	36	5.76E-6	> 1.00E-4	> 1.00E-4
Prostate Cancer															
PC-3	0.480	1.712	1.598	0.777	0.772	0.778	0.762	91	24	24	24	23	4.09E-8	> 1.00E-4	> 1.00E-4
DU-145	0.322	1.047	1.076	0.360	0.283	0.289	0.263	104	5	-12	-10	-18	3.52E-8	2.00E-7	> 1.00E-4
Breast Cancer															
MCF7	0.289	1.389	1.184	0.440	0.377	0.367	0.327	81	14	8	7	3	2.91E-8	> 1.00E-4	> 1.00E-4
MDA-MB-231/ATCC	0.562	1.384	1.388	0.862	0.755	0.694	0.617	100	36	23	16	7	6.14E-8	> 1.00E-4	> 1.00E-4
HS 578T	0.700	1.410	1.328	0.770	0.801	0.828	0.840	88	10	14	18	20	3.08E-8	> 1.00E-4	> 1.00E-4
BT-549	0.876	1.961	1.924	1.430	1.071	1.140	1.060	97	51	18	24	17	1.07E-7	> 1.00E-4	> 1.00E-4
T-47D	0.507	1.382	1.355	0.932	0.995	1.035	1.068	97	49	56	60	64	.	> 1.00E-4	> 1.00E-4
MDA-MB-468	0.555	0.960	0.911	0.544	0.499	0.524	0.565	88	-2	-10	-6	2	2.63E-8	.	> 1.00E-4

Mean Graphs

Report Date :December 06, 2011

Test Date :August 08, 2011

