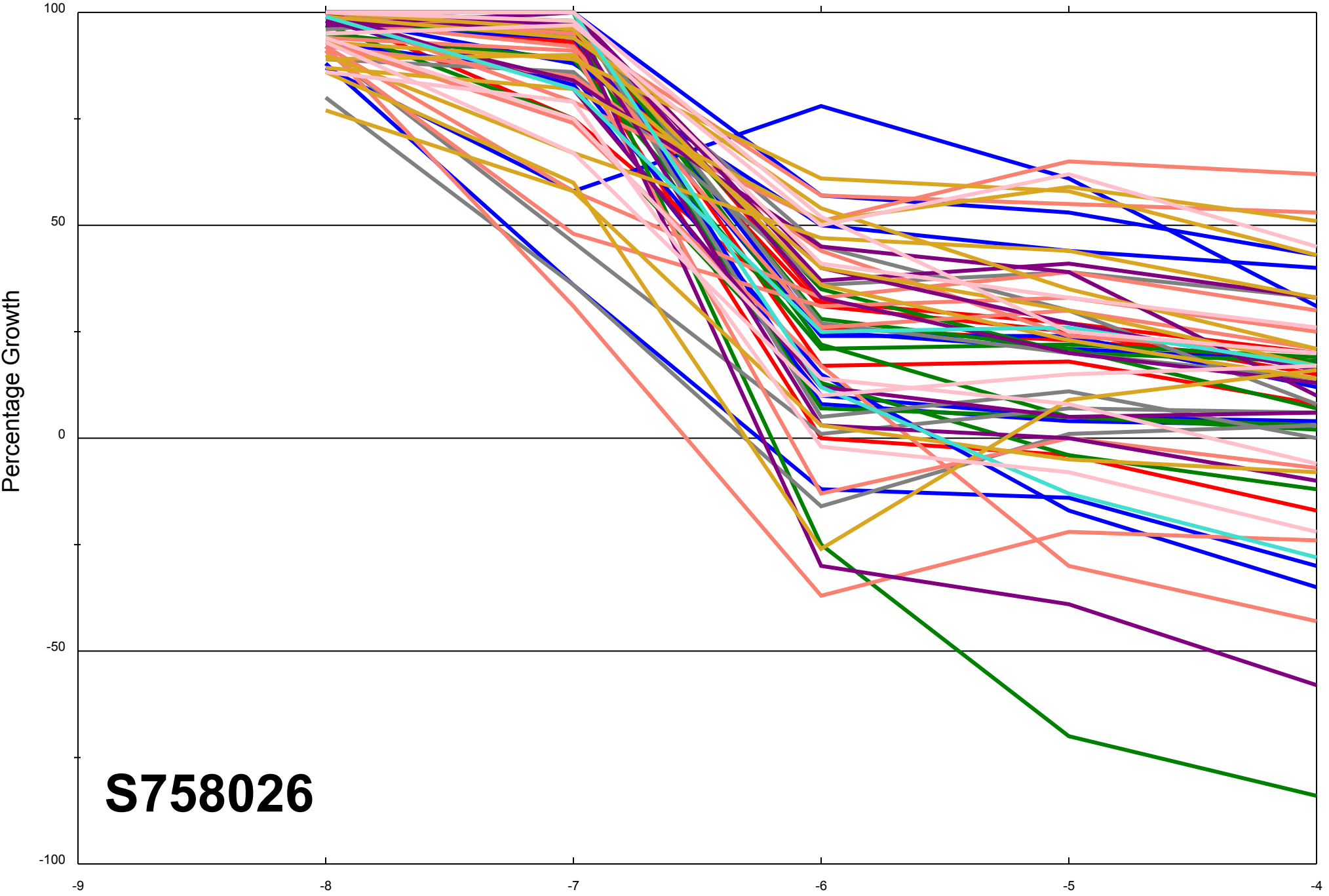


Dose Response Curves

Report Date:December 05, 2011

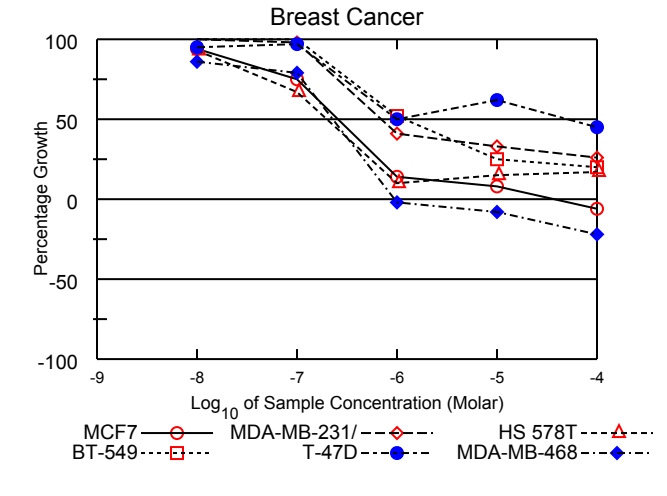
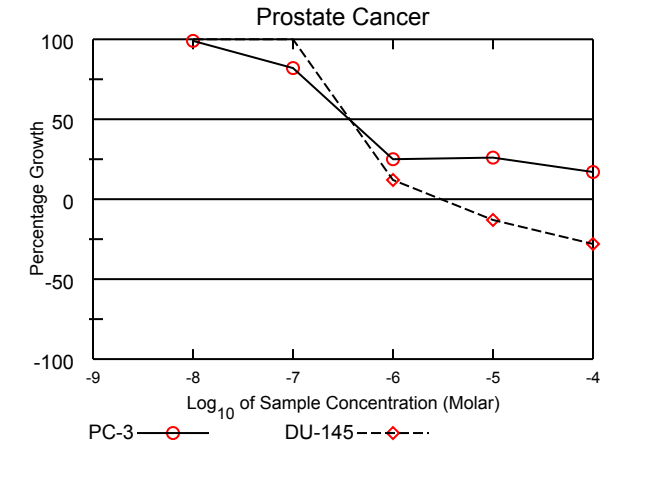
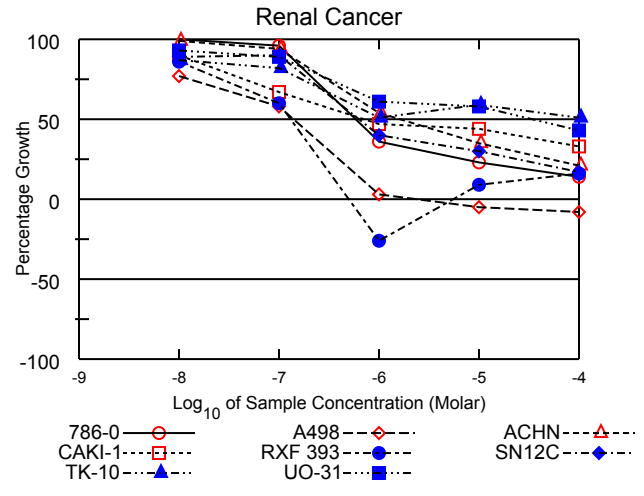
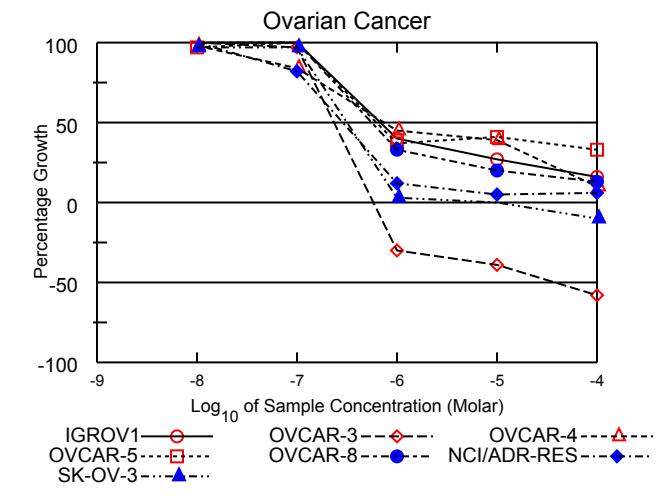
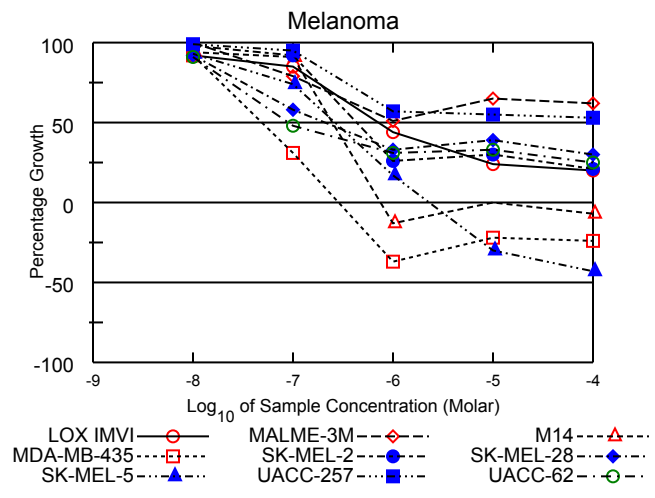
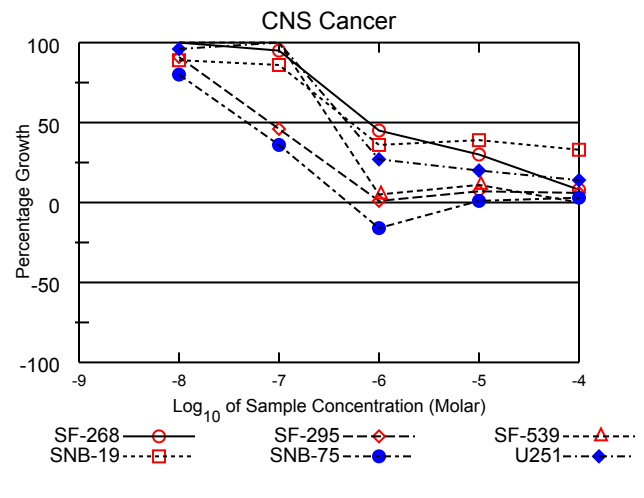
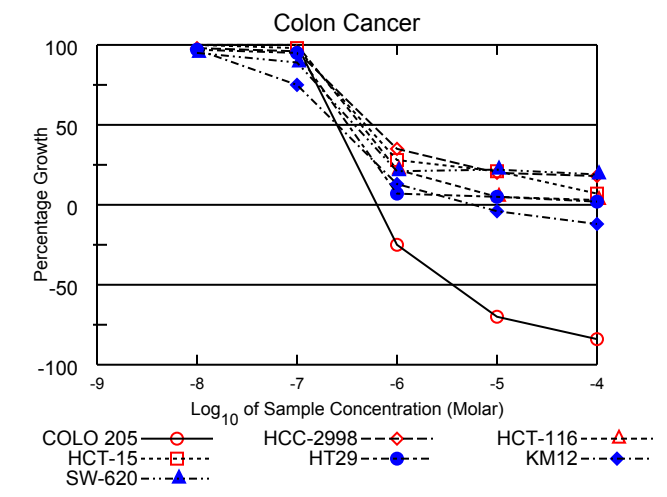
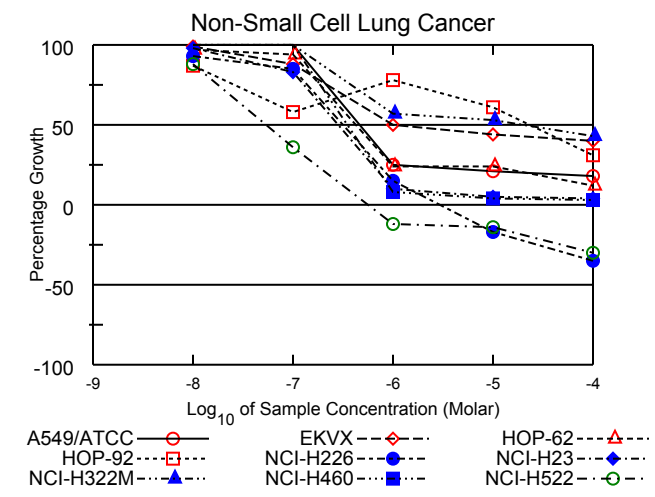
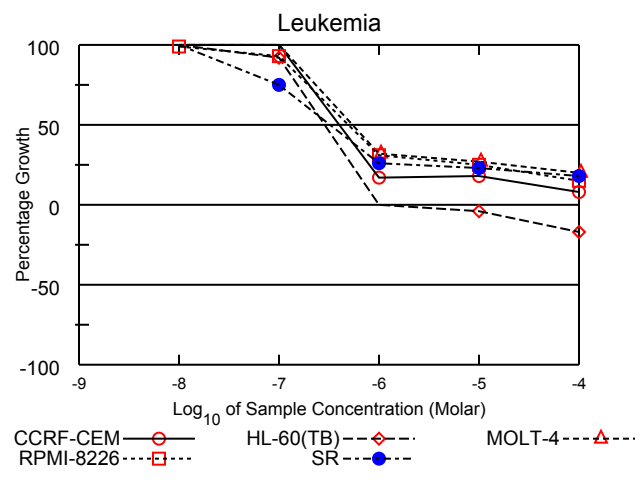
Test Date:August 08, 2011

All Cell Lines



**S758026**

Log<sub>10</sub> of Sample Concentration (Molar)



# National Cancer Institute Developmental Therapeutics Program In-Vitro Testing Results

NSC : 758026 / 1	Experiment ID : 1108RS99	Test Type : 08	Units : Molar
Report Date : December 05, 2011	Test Date : August 08, 2011	QNS :	MC :
COMI : NMR/19217509 (104807)	Stain Reagent : SRB Dual-Pass Related	SSPL : 0YAR	

Panel/Cell Line	Log10 Concentration												GI50	TGI	LC50	
	Time	Mean Optical Densities						Percent Growth								
	Zero	Ctrl	-8.0	-7.0	-6.0	-5.0	-4.0	-8.0	-7.0	-6.0	-5.0	-4.0				
<b>Leukemia</b>																
CCRF-CEM	0.251	1.185	1.238	1.232	0.413	0.421	0.323	106	105	17	18	8	4.24E-7	> 1.00E-4	> 1.00E-4	
HL-60(TB)	0.563	2.394	2.429	2.245	0.572	0.540	0.469	102	92	.	-4	-17	2.87E-7	> 1.28E-6	> 1.00E-4	
MOLT-4	0.373	1.703	1.738	1.787	0.795	0.729	0.640	103	106	32	27	20	5.69E-7	> 1.00E-4	> 1.00E-4	
RPMI-8226	0.635	1.796	1.788	1.716	0.995	0.927	0.806	99	93	31	25	15	4.94E-7	> 1.00E-4	> 1.00E-4	
SR	0.140	0.670	0.693	0.536	0.280	0.261	0.234	104	75	26	23	18	3.24E-7	> 1.00E-4	> 1.00E-4	
<b>Non-Small Cell Lung Cancer</b>																
A549/ATCC	0.362	1.643	1.673	1.724	0.680	0.634	0.591	102	106	25	21	18	4.91E-7	> 1.00E-4	> 1.00E-4	
EKVX	0.761	1.860	1.849	1.730	1.307	1.244	1.198	99	88	50	44	40	9.82E-7	> 1.00E-4	> 1.00E-4	
HOP-62	0.401	1.137	1.111	1.091	0.579	0.574	0.493	97	94	24	24	12	4.25E-7	> 1.00E-4	> 1.00E-4	
HOP-92	1.007	1.335	1.291	1.262	1.208	1.108		87	58	78	61	31	2.33E-5	> 1.00E-4	> 1.00E-4	
NCI-H226	0.778	1.720	1.656	1.581	0.918	0.647	0.509	93	85	15	-17	-35	3.17E-7	2.94E-6	> 1.00E-4	
NCI-H23	0.625	2.068	2.044	1.829	0.763	0.696	0.684	98	83	10	5	4	2.83E-7	> 1.00E-4	> 1.00E-4	
NCI-H322M	0.719	1.665	1.713	1.676	1.259	1.219	1.126	105	101	57	53	43	1.92E-5	> 1.00E-4	> 1.00E-4	
NCI-H460	0.153	1.418	1.414	1.419	0.250	0.208	0.188	100	100	8	4	3	3.48E-7	> 1.00E-4	> 1.00E-4	
NCI-H522	0.615	1.664	1.537	0.990	0.542	0.532	0.434	88	36	-12	-14	-30	5.33E-8	5.63E-7	> 1.00E-4	
<b>Colon Cancer</b>																
COLO 205	0.255	0.897	0.929	0.937	0.191	0.077	0.040	105	106	-25	-70	-84	2.68E-7	6.42E-7	3.59E-6	
HCC-2998	0.475	1.618	1.594	1.571	0.876	0.708	0.683	98	96	35	20	18	5.68E-7	> 1.00E-4	> 1.00E-4	
HCT-116	0.194	1.449	1.445	1.493	0.476	0.258	0.237	100	103	22	5	3	4.57E-7	> 1.00E-4	> 1.00E-4	
HCT-15	0.326	1.990	2.004	1.951	0.794	0.676	0.439	101	98	28	21	7	4.85E-7	> 1.00E-4	> 1.00E-4	
HT29	0.224	1.373	1.337	1.318	0.307	0.287	0.253	97	95	7	5	2	3.26E-7	> 1.00E-4	> 1.00E-4	
KM12	0.323	1.444	1.411	1.166	0.470	0.309	0.284	97	75	13	-4	-12	2.54E-7	5.64E-6	> 1.00E-4	
SW-620	0.172	1.180	1.134	1.067	0.388	0.391	0.363	95	89	21	22	19	3.77E-7	> 1.00E-4	> 1.00E-4	
<b>CNS Cancer</b>																
SF-268	0.378	1.061	1.136	1.024	0.688	0.581	0.430	111	95	45	30	8	8.05E-7	> 1.00E-4	> 1.00E-4	
SF-295	0.655	2.434	2.267	1.479	0.676	0.787	0.758	91	46	1	7	6	8.25E-8	> 1.00E-4	> 1.00E-4	
SF-539	0.599	1.703	1.744	1.767	0.657	0.725	0.600	104	106	5	11	.	3.59E-7	> 1.00E-4	> 1.00E-4	
SNB-19	0.475	1.697	1.561	1.526	0.910	0.948	0.884	89	86	36	39	33	5.18E-7	> 1.00E-4	> 1.00E-4	
SNB-75	0.910	1.358	1.271	1.072	0.765	0.913	0.924	80	36	-16	1	3	4.87E-8	.	> 1.00E-4	
U251	0.342	1.489	1.441	1.498	0.653	0.571	0.508	96	101	27	20	14	4.89E-7	> 1.00E-4	> 1.00E-4	
<b>Melanoma</b>																
LOX IMVI	0.388	2.261	2.116	1.976	1.207	0.829	0.766	92	85	44	24	20	7.02E-7	> 1.00E-4	> 1.00E-4	
MALME-3M	0.723	1.402	1.427	1.263	1.069	1.163	1.144	104	79	51	65	62	> 1.00E-4	> 1.00E-4	> 1.00E-4	
M14	0.388	1.291	1.234	1.207	0.338	0.391	0.359	94	91	-13	.	-7	2.47E-7	.	> 1.00E-4	
MDA-MB-435	0.444	2.043	1.921	0.940	0.281	0.347	0.339	92	31	-37	-22	-24	4.90E-8	2.87E-7	> 1.00E-4	
SK-MEL-2	0.714	1.270	1.261	1.224	0.857	0.880	0.830	98	92	26	30	21	4.29E-7	> 1.00E-4	> 1.00E-4	
SK-MEL-28	0.435	1.129	1.074	0.838	0.662	0.706	0.642	92	58	33	39	30	2.06E-7	> 1.00E-4	> 1.00E-4	
SK-MEL-5	0.614	2.247	2.135	1.830	0.900	0.430	0.353	93	74	17	-30	-43	2.69E-7	2.33E-6	> 1.00E-4	
UACC-257	0.884	1.645	1.640	1.606	1.321	1.305	1.286	99	95	57	55	53	> 1.00E-4	> 1.00E-4	> 1.00E-4	
UACC-62	0.568	2.464	2.294	1.471	1.159	1.186	1.038	91	48	31	33	25	8.81E-8	> 1.00E-4	> 1.00E-4	
<b>Ovarian Cancer</b>																
IGROV1	0.428	1.616	1.710	1.619	0.901	0.752	0.618	108	100	40	27	16	6.79E-7	> 1.00E-4	> 1.00E-4	
OVCAR-3	0.347	0.962	1.005	0.944	0.242	0.210	0.145	107	97	-30	-39	-58	2.34E-7	5.78E-7	3.64E-5	
OVCAR-4	0.543	1.017	1.006	0.942	0.759	0.729	0.591	98	84	45	39	10	7.62E-7	> 1.00E-4	> 1.00E-4	
OVCAR-5	0.467	1.231	1.208	1.231	0.753	0.782	0.719	97	100	37	41	33	6.29E-7	> 1.00E-4	> 1.00E-4	
OVCAR-8	0.433	1.549	1.576	1.639	0.803	0.651	0.577	102	108	33	20	13	5.95E-7	> 1.00E-4	> 1.00E-4	
NCI/ADR-RES	0.455	1.544	1.540	1.350	0.591	0.513	0.519	100	82	12	5	6	2.89E-7	> 1.00E-4	> 1.00E-4	
SK-OV-3	0.536	1.155	1.135	1.137	0.557	0.539	0.481	97	97	3	.	-10	3.18E-7	1.11E-5	> 1.00E-4	
<b>Renal Cancer</b>																
786-0	0.680	2.251	2.259	2.195	1.253	1.049	0.907	100	96	36	23	14	5.94E-7	> 1.00E-4	> 1.00E-4	
A498	1.031	1.723	1.562	1.431	1.050	0.975	0.944	77	58	3	-5	-8	1.38E-7	2.17E-6	> 1.00E-4	
ACHN	0.269	1.192	1.187	1.139	0.765	0.590	0.463	99	94	54	35	21	1.57E-6	> 1.00E-4	> 1.00E-4	
CAKI-1	0.902	2.414	2.256	1.921	1.612	1.569	1.405	90	67	47	44	33	7.09E-7	> 1.00E-4	> 1.00E-4	
RXF 393	0.810	1.292	1.224	1.098	0.602	0.854	0.887	86	60	-26	9	16	1.30E-7	.	> 1.00E-4	
SN12C	0.456	1.901	1.747	1.754	1.029	0.886	0.702	89	90	40	30	17	6.22E-7	> 1.00E-4	> 1.00E-4	
TK-10	0.760	1.479	1.385	1.353	1.127	1.187	1.127	87	82	51	59	51	> 1.00E-4	> 1.00E-4	> 1.00E-4	
UO-31	0.627	1.634	1.564	1.518	1.244	1.210	1.057	93	89	61	58	43	3.31E-5	> 1.00E-4	> 1.00E-4	
<b>Prostate Cancer</b>																
PC-3	0.480	1.652	1.639	1.435	0.768	0.780	0.676	99	82	25	26	17	3.58E-7	> 1.00E-4	> 1.00E-4	
DU-145	0.322	1.009	1.064	1.058	0.405	0.281	0.233	108	107	12	-13	-28	3.99E-7	3.07E-6	> 1.00E-4	
<b>Breast Cancer</b>																
MCF7	0.289	1.385	1.322	1.109	0.437	0.373	0.273	94	75	14	8	-6	2.54E-7	3.74E-5	> 1.00E-4	
MDA-MB-231/ATCC	0.562	1.455	1.458	1.437	0.929	0.854	0.793	100	98	41	33	26	6.98E-7	> 1.00E-4	> 1.00E-4	
HS 578T	0.700	1.418	1.366	1.181	0.771	0.808	0.825	93	67	10	15	17	1.99E-7	> 1.00E-4	> 1.00E-4	
BT-549	0.876	1.966	1.962	1.963	1.443	1.148	1.094	100	100	52	25	20	1.19E-6	> 1.00E-4	> 1.00E-4	
T-47D	0.507	1.349	1.303	1.326	0.930	1.031	0.885	95	97	50	62	45	5.05E-5	> 1.00E-4	> 1.00E-4	
MDA-MB-468	0.555	0.955	0.899	0.872	0.546	0.512	0.434	86	79	-2	-8	-22	2.30E-7	9.55E-7	> 1.00E-4	

Mean Graphs

Report Date :December 05, 2011

Test Date :August 08, 2011

