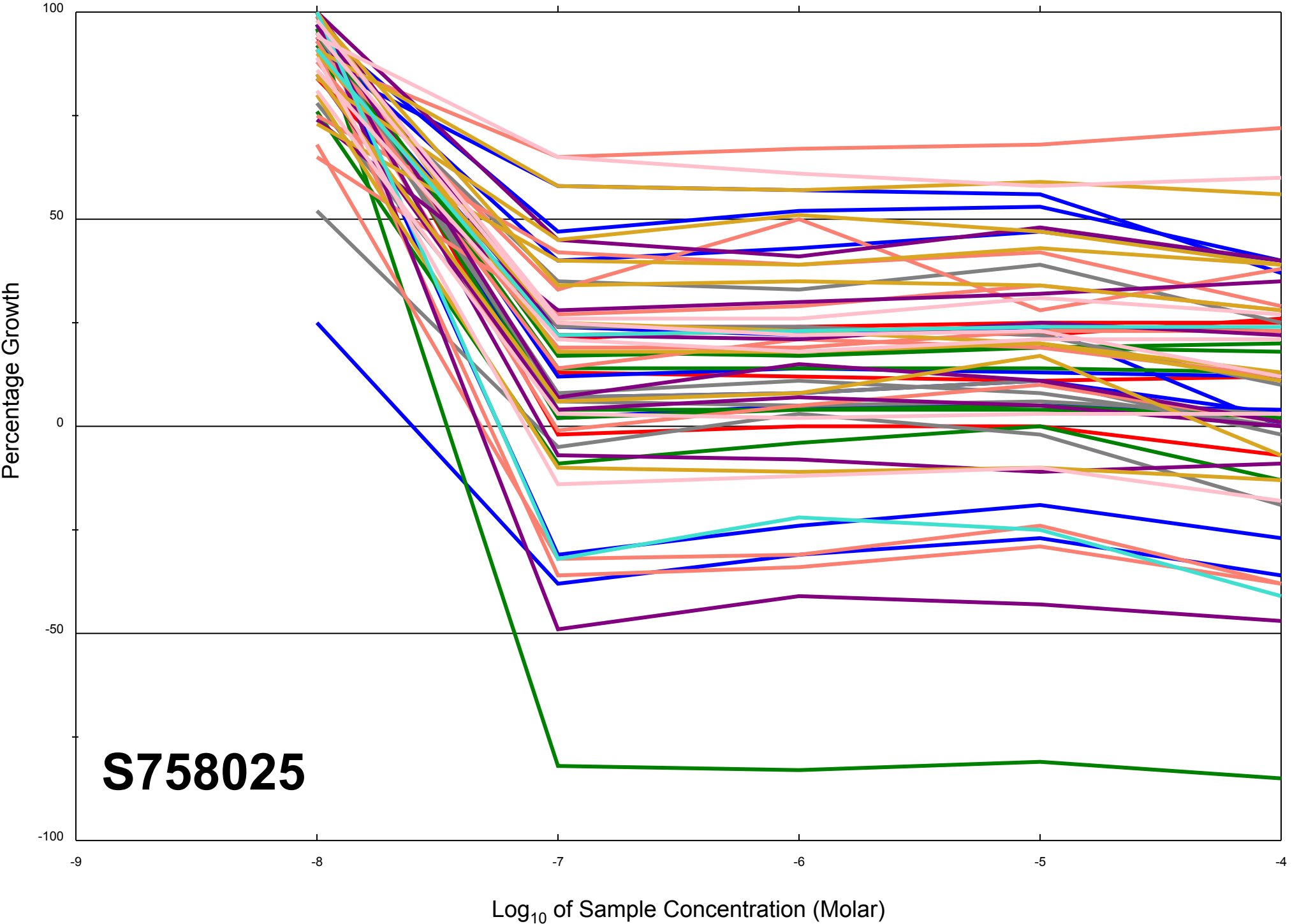
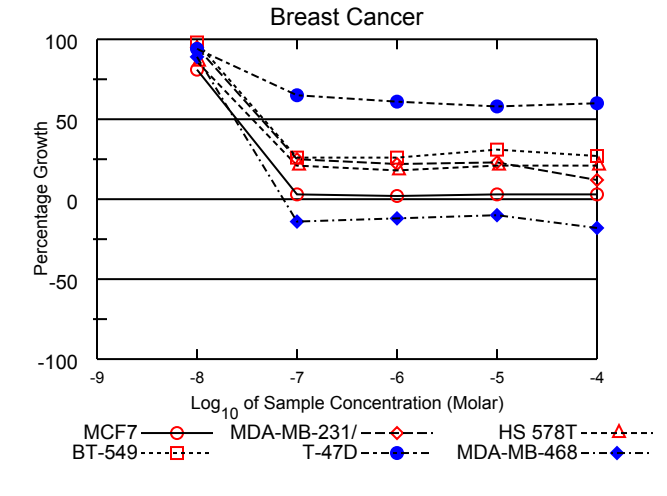
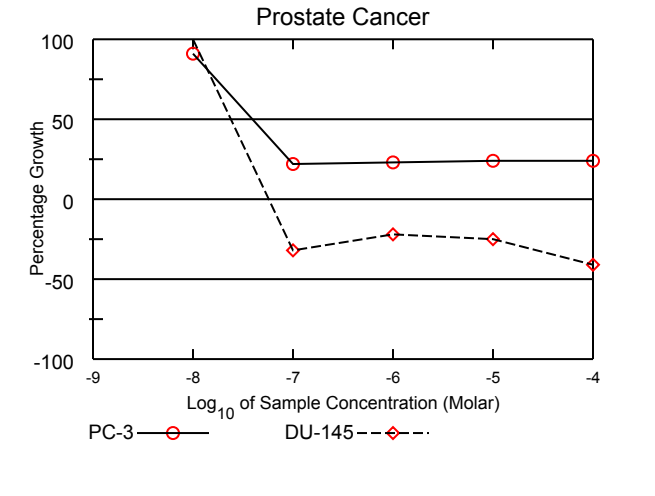
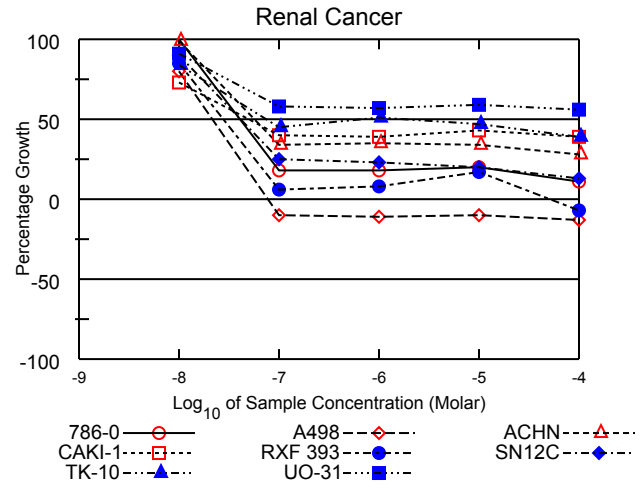
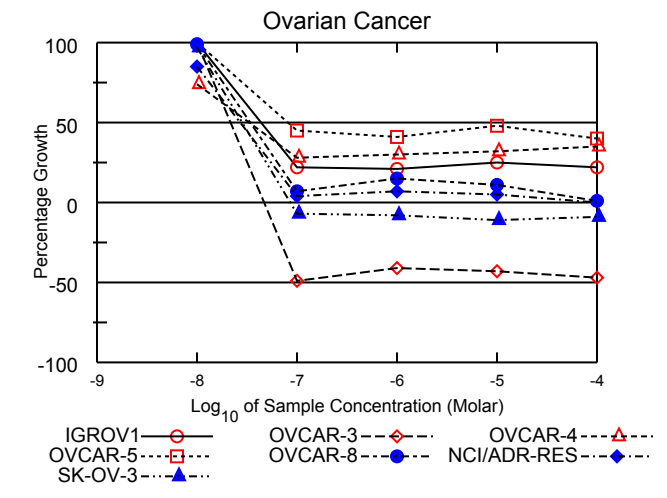
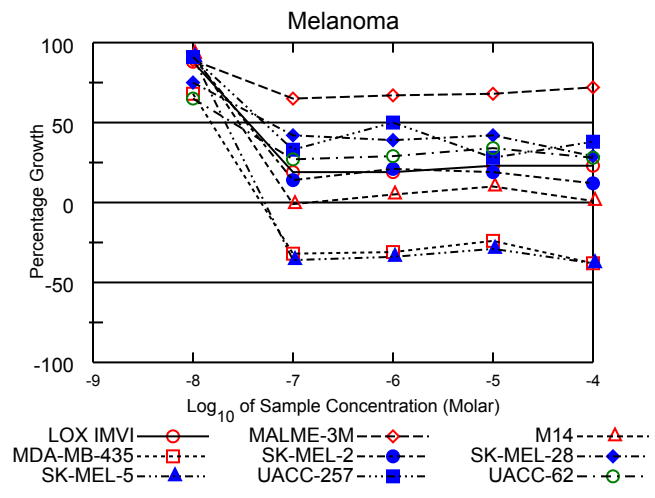
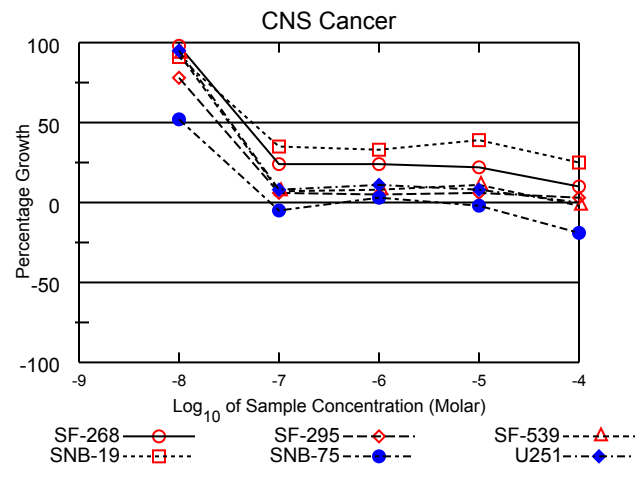
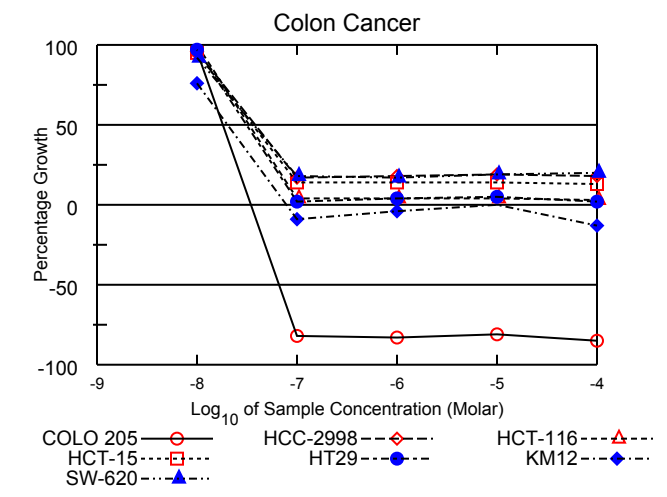
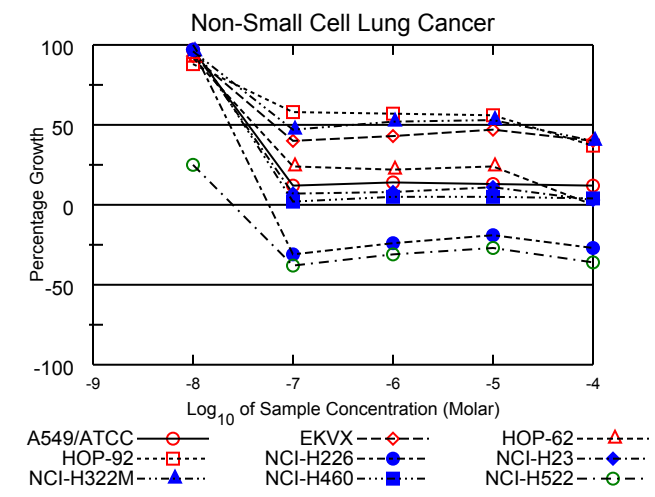
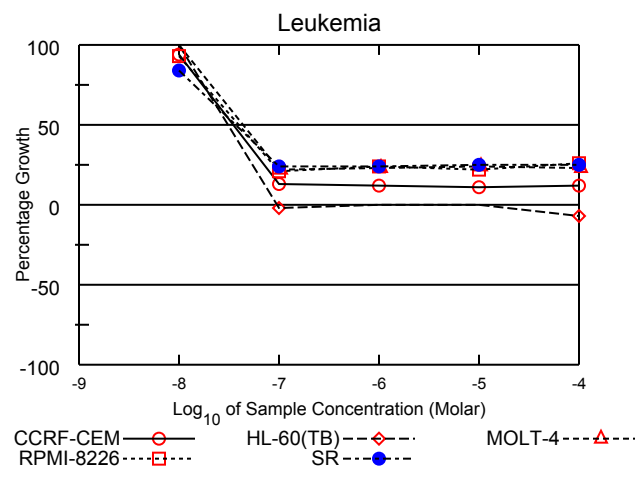


All Cell Lines





# National Cancer Institute Developmental Therapeutics Program In-Vitro Testing Results

NSC : 758025 / 1	Experiment ID : 1108RS99	Test Type : 08	Units : Molar
Report Date : December 05, 2011	Test Date : August 08, 2011	QNS :	MC :
COMI : NMR/19217524 (104806)	Stain Reagent : SRB Dual-Pass Related	SSPL : 0YAR	

Panel/Cell Line	Log10 Concentration												GI50	TGI	LC50	
	Time Zero	Ctrl	-8.0	-7.0	Mean Optical Densities			Percent Growth								
				-6.0	-5.0	-4.0	-8.0	-7.0	-6.0	-5.0	-4.0					
<b>Leukemia</b>																
CCRF-CEM	0.251	1.169	1.110	0.373	0.358	0.356	0.359	94	13	12	11	12	3.49E-8	> 1.00E-4	> 1.00E-4	
HL-60(TB)	0.563	2.471	2.495	0.553	0.564	0.571	0.522	101	-2	.	.	-7	3.14E-8	.	> 1.00E-4	
MOLT-4	0.373	1.676	1.764	0.662	0.668	0.688	0.668	107	22	23	24	23	4.69E-8	> 1.00E-4	> 1.00E-4	
RPMI-8226	0.635	1.747	1.666	0.867	0.901	0.878	0.927	93	21	24	22	26	3.93E-8	> 1.00E-4	> 1.00E-4	
SR	0.140	0.685	0.596	0.270	0.269	0.279	0.276	84	24	24	25	25	3.64E-8	> 1.00E-4	> 1.00E-4	
<b>Non-Small Cell Lung Cancer</b>																
A549/ATCC	0.362	1.675	1.640	0.517	0.540	0.527	0.518	97	12	14	13	12	3.58E-8	> 1.00E-4	> 1.00E-4	
EKVX	0.761	1.822	1.752	1.183	1.218	1.262	1.189	93	40	43	47	40	6.43E-8	> 1.00E-4	> 1.00E-4	
HOP-62	0.401	1.133	1.076	0.578	0.565	0.580	0.400	92	24	22	24	.	4.17E-8	9.77E-5	> 1.00E-4	
HOP-92	1.007	1.338	1.300	1.201	1.195	1.194	1.130	88	58	57	56	37	2.13E-5	> 1.00E-4	> 1.00E-4	
NCI-H226	0.778	1.722	1.690	0.537	0.588	0.634	0.567	97	-31	-24	-19	-27	2.32E-8	5.72E-8	> 1.00E-4	
NCI-H23	0.625	2.019	1.983	0.718	0.737	0.772	0.672	97	7	8	11	3	3.33E-8	> 1.00E-4	> 1.00E-4	
NCI-H322M	0.719	1.677	1.635	1.167	1.218	1.227	1.100	96	47	52	53	40	.	> 1.00E-4	> 1.00E-4	
NCI-H460	0.153	1.284	1.316	0.175	0.213	0.212	0.201	103	2	5	5	4	3.34E-8	> 1.00E-4	> 1.00E-4	
NCI-H522	0.615	1.555	0.852	0.383	0.425	0.448	0.396	25	-38	-31	-27	-36	< 1.00E-8	2.51E-8	> 1.00E-4	
<b>Colon Cancer</b>																
COLO 205	0.255	0.888	0.866	0.047	0.044	0.049	0.038	96	-82	-83	-81	-85	1.82E-8	3.48E-8	6.63E-8	
HCC-2998	0.475	1.593	1.544	0.662	0.677	0.693	0.675	96	17	18	19	18	3.79E-8	> 1.00E-4	> 1.00E-4	
HCT-116	0.194	1.482	1.490	0.241	0.252	0.250	0.229	101	4	4	4	3	3.32E-8	> 1.00E-4	> 1.00E-4	
HCT-15	0.326	1.968	1.892	0.550	0.561	0.552	0.544	95	14	14	14	13	3.59E-8	> 1.00E-4	> 1.00E-4	
HT29	0.224	1.325	1.296	0.246	0.267	0.275	0.246	97	2	4	5	2	3.14E-8	> 1.00E-4	> 1.00E-4	
KM12	0.323	1.388	1.129	0.295	0.311	0.325	0.280	76	-9	-4	.	-13	2.01E-8	.	> 1.00E-4	
SW-620	0.172	1.085	1.013	0.334	0.329	0.348	0.354	92	18	17	19	20	3.68E-8	> 1.00E-4	> 1.00E-4	
<b>CNS Cancer</b>																
SF-268	0.378	1.156	1.141	0.562	0.562	0.548	0.455	98	24	24	22	10	4.43E-8	> 1.00E-4	> 1.00E-4	
SF-295	0.655	2.293	1.926	0.748	0.739	0.761	0.709	78	6	5	6	3	2.42E-8	> 1.00E-4	> 1.00E-4	
SF-539	0.599	1.689	1.611	0.676	0.692	0.719	0.587	93	7	8	11	-2	3.16E-8	6.93E-5	> 1.00E-4	
SNB-19	0.475	1.627	1.525	0.878	0.856	0.929	0.759	91	35	33	39	25	5.41E-8	> 1.00E-4	> 1.00E-4	
SNB-75	0.910	1.385	1.155	0.867	0.926	0.888	0.736	52	-5	3	-2	-19	1.06E-8	.	> 1.00E-4	
U251	0.342	1.413	1.359	0.430	0.459	0.431	0.347	95	8	11	8	.	3.30E-8	> 1.00E-4	> 1.00E-4	
<b>Melanoma</b>																
LOX IMVI	0.388	2.207	1.997	0.731	0.731	0.799	0.814	88	19	19	23	23	3.57E-8	> 1.00E-4	> 1.00E-4	
MALME-3M	0.723	1.375	1.304	1.149	1.157	1.169	1.190	89	65	67	68	72	> 1.00E-4	> 1.00E-4	> 1.00E-4	
M14	0.388	1.302	1.237	0.384	0.432	0.475	0.395	93	-1	5	10	1	2.86E-8	.	> 1.00E-4	
MDA-MB-435	0.444	1.924	1.448	0.304	0.306	0.340	0.278	68	-32	-31	-24	-38	1.51E-8	4.81E-8	> 1.00E-4	
SK-MEL-2	0.714	1.235	1.186	0.789	0.823	0.815	0.775	91	14	21	19	12	3.41E-8	> 1.00E-4	> 1.00E-4	
SK-MEL-28	0.435	1.070	0.913	0.699	0.681	0.705	0.620	75	42	39	42	29	5.64E-8	> 1.00E-4	> 1.00E-4	
SK-MEL-5	0.614	2.324	2.164	0.396	0.403	0.437	0.379	91	-36	-34	-29	-38	2.10E-8	5.23E-8	> 1.00E-4	
UACC-257	0.884	1.598	1.531	1.122	1.238	1.081	1.158	91	33	50	28	38	5.12E-8	> 1.00E-4	> 1.00E-4	
UACC-62	0.568	2.273	1.672	1.022	1.061	1.146	1.044	65	27	29	34	28	2.44E-8	> 1.00E-4	> 1.00E-4	
<b>Ovarian Cancer</b>																
IGROV1	0.428	1.602	1.651	0.684	0.678	0.719	0.684	104	22	21	25	22	4.54E-8	> 1.00E-4	> 1.00E-4	
OVCAR-3	0.347	0.944	0.959	0.178	0.203	0.197	0.183	102	-49	-41	-43	-47	2.22E-8	4.76E-8	> 1.00E-4	
OVCAR-4	0.543	1.028	0.903	0.681	0.689	0.697	0.714	74	28	30	32	35	3.37E-8	> 1.00E-4	> 1.00E-4	
OVCAR-5	0.467	1.189	1.187	0.794	0.763	0.811	0.757	100	45	41	48	40	8.17E-8	> 1.00E-4	> 1.00E-4	
OVCAR-8	0.433	1.496	1.488	0.508	0.589	0.549	0.447	99	7	15	11	1	3.42E-8	> 1.00E-4	> 1.00E-4	
NCI/ADR-RES	0.455	1.519	1.364	0.503	0.525	0.513	0.460	85	4	7	5	.	2.74E-8	> 1.00E-4	> 1.00E-4	
SK-OV-3	0.536	1.137	1.121	0.497	0.493	0.475	0.489	97	-7	-8	-11	-9	2.83E-8	8.50E-8	> 1.00E-4	
<b>Renal Cancer</b>																
786-0	0.680	2.262	2.272	0.969	0.967	1.004	0.852	101	18	18	20	11	4.12E-8	> 1.00E-4	> 1.00E-4	
A498	1.031	1.676	1.545	0.932	0.913	0.931	0.901	80	-10	-11	-10	-13	2.15E-8	7.80E-8	> 1.00E-4	
ACHN	0.269	1.115	1.103	0.558	0.564	0.555	0.508	99	34	35	34	28	5.67E-8	> 1.00E-4	> 1.00E-4	
CAKI-1	0.902	2.322	1.937	1.474	1.462	1.516	1.461	73	40	39	43	39	5.02E-8	> 1.00E-4	> 1.00E-4	
RXF 393	0.810	1.229	1.167	0.837	0.845	0.881	0.757	85	6	8	17	-7	2.79E-8	5.25E-5	> 1.00E-4	
SN12C	0.456	1.795	1.662	0.795	0.764	0.727	0.631	90	25	23	20	13	4.16E-8	> 1.00E-4	> 1.00E-4	
TK-10	0.760	1.391	1.291	1.046	1.085	1.058	1.003	84	45	51	47	39	.	> 1.00E-4	> 1.00E-4	
UO-31	0.627	1.576	1.491	1.179	1.164	1.183	1.156	91	58	57	59	56	> 1.00E-4	> 1.00E-4	> 1.00E-4	
<b>Prostate Cancer</b>																
PC-3	0.480	1.646	1.541	0.738	0.753	0.764	0.756	91	22	23	24	24	3.94E-8	> 1.00E-4	> 1.00E-4	
DU-145	0.322	1.036	1.064	0.220	0.251	0.241	0.192	104	-32	-22	-25	-41	2.49E-8	5.83E-8	> 1.00E-4	
<b>Breast Cancer</b>																
MCF7	0.289	1.327	1.128	0.323	0.309	0.321	0.323	81	3	2	3	3	2.50E-8	> 1.00E-4	> 1.00E-4	
MDA-MB-231/ATCC	0.562	1.318	1.280	0.749	0.730	0.733	0.649	95	25	22	23	12	4.36E-8	> 1.00E-4	> 1.00E-4	
HS 578T	0.700	1.440	1.334	0.859	0.831	0.857	0.853	86	21	18	21	21	3.58E-8	> 1.00E-4	> 1.00E-4	
BT-549	0.876	1.948	1.926	1.150	1.154	1.213	1.164	98	26	26	31	27	4.60E-8	> 1.00E-4	> 1.00E-4	
T-47D	0.507	1.355	1.302	1.056	1.021	1.002	1.017	94	65	61	58	60	> 1.00E-4	> 1.00E-4	> 1.00E-4	
MDA-MB-468	0.555	0.915	0.874	0.476	0.488	0.498	0.454	89	-14	-12	-10	-18	2.37E-8	7.27E-8	> 1.00E-4	

Mean Graphs

Report Date :December 05, 2011

Test Date :August 08, 2011

