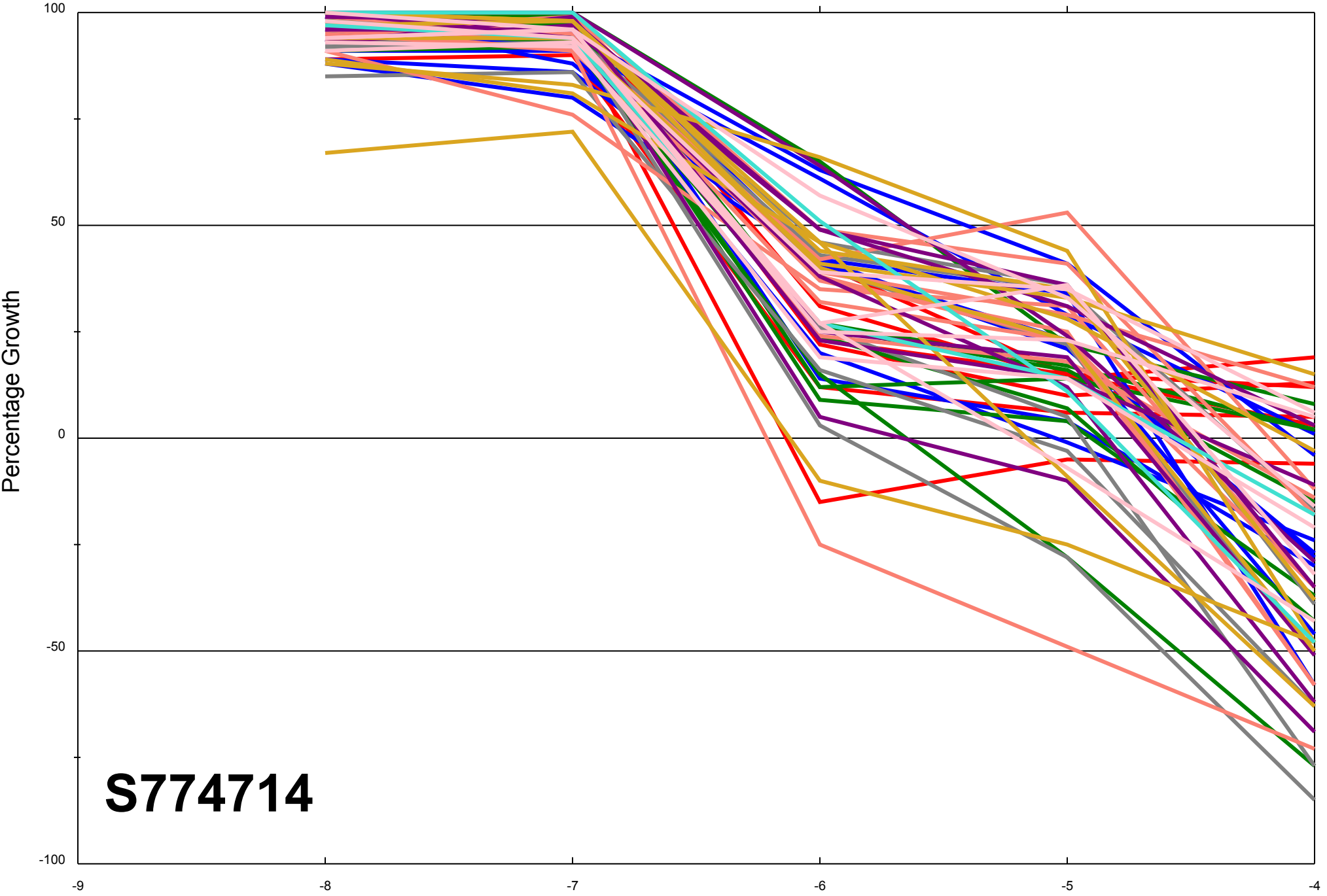


Dose Response Curves

Report Date:February 05, 2014

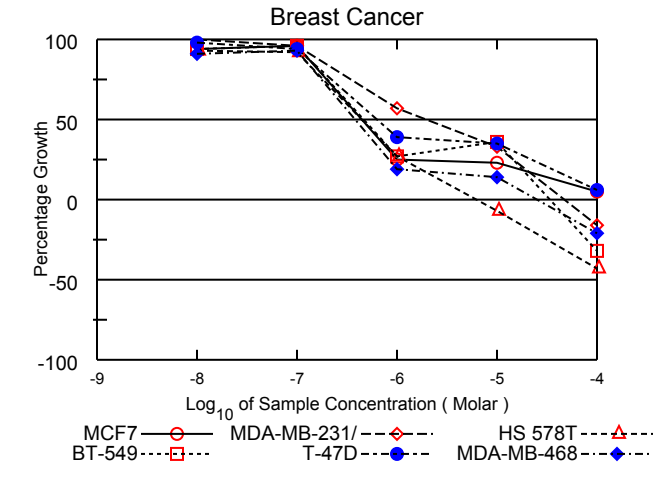
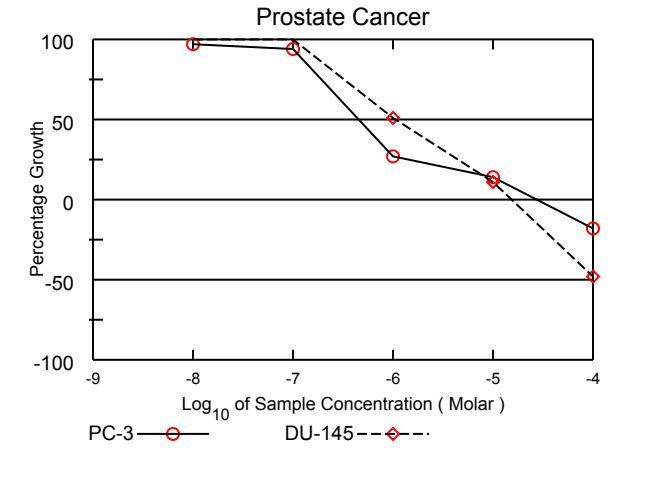
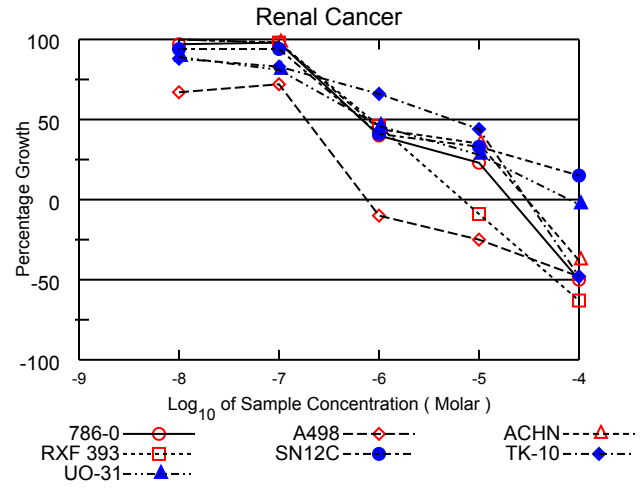
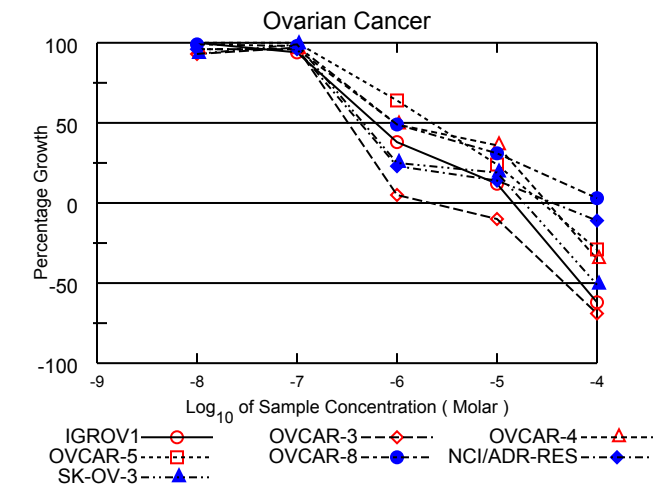
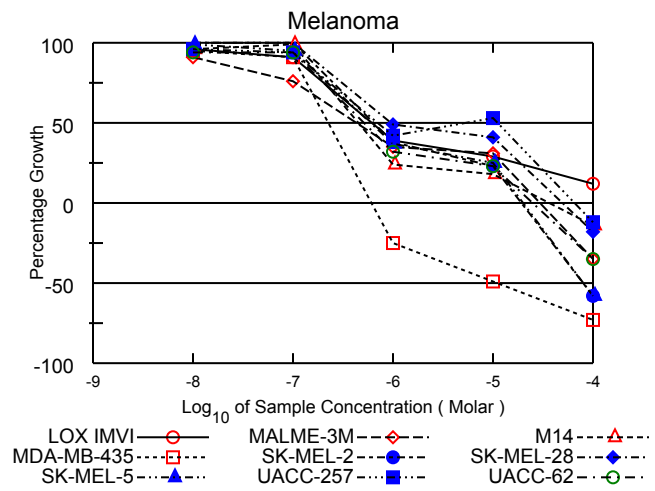
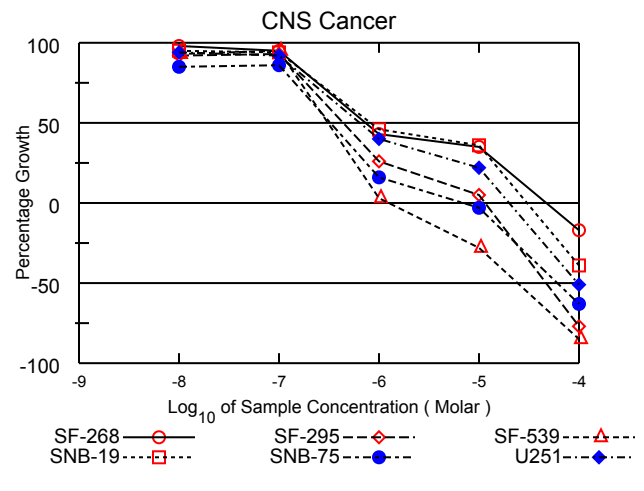
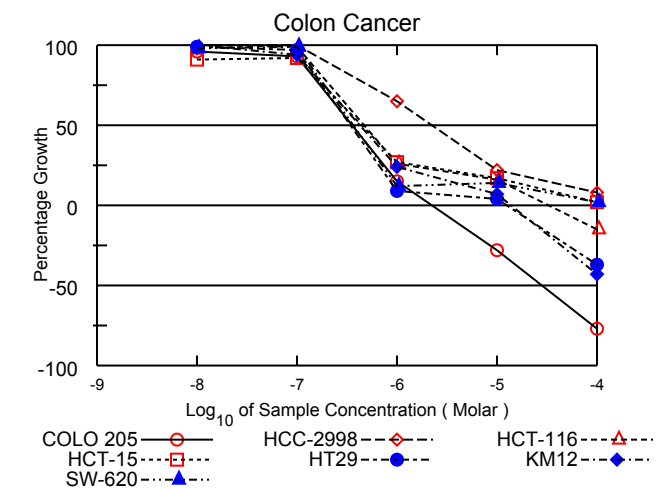
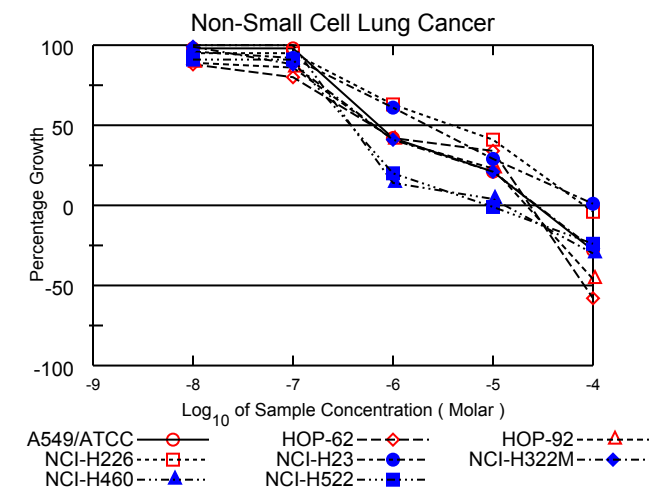
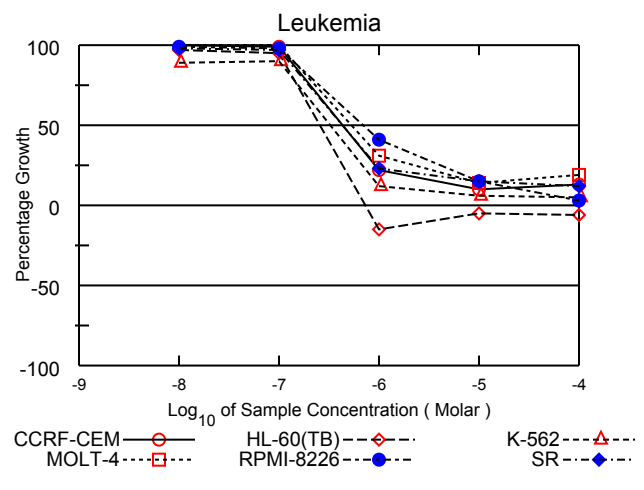
Test Date:September 09, 2013

All Cell Lines



S774714

Log₁₀ of Sample Concentration (Molar)



National Cancer Institute Developmental Therapeutics Program In-Vitro Testing Results

NSC : 774714 / 1	Experiment ID : 1309NS64	Test Type : 08	Units : Molar
Report Date : February 05, 2014	Test Date : September 09, 2013	QNS :	MC :
COMI : A2145/0090050 (128607)	Stain Reagent : SRB Dual-Pass Related	SSPL : 0YAR	

Panel/Cell Line	Log10 Concentration												GI50	TGI	LC50
	Time Zero	Ctrl	-8.0	-7.0	-6.0	-5.0	-4.0	-8.0	-7.0	-6.0	-5.0	-4.0			
Leukemia															
CCRF-CEM	0.719	3.264	3.290	3.239	1.269	0.971	1.051	101	99	22	10	13	4.30E-7	> 1.00E-4	> 1.00E-4
HL-60(TB)	0.687	2.898	2.841	2.777	0.582	0.655	0.647	97	95	-15	-5	-6	2.54E-7	> 7.26E-7	> 1.00E-4
K-562	0.270	2.062	1.857	1.877	0.478	0.370	0.363	89	90	12	6	5	3.22E-7	> 1.00E-4	> 1.00E-4
MOLT-4	0.800	2.842	2.864	2.871	1.424	1.076	1.181	101	101	31	14	19	5.32E-7	> 1.00E-4	> 1.00E-4
RPMI-8226	0.897	2.785	2.775	2.749	1.664	1.180	0.962	99	98	41	15	3	6.87E-7	> 1.00E-4	> 1.00E-4
SR	0.363	1.543	1.514	1.512	0.632	0.539	0.499	98	97	23	15	12	4.32E-7	> 1.00E-4	> 1.00E-4
Non-Small Cell Lung Cancer															
A549/ATCC	0.429	2.042	2.017	2.006	1.099	0.774	0.310	98	98	42	21	-28	7.06E-7	2.72E-5	> 1.00E-4
HOP-62	0.530	1.187	1.112	1.054	0.805	0.755	0.221	88	80	42	34	-58	6.09E-7	2.34E-5	8.12E-5
HOP-92	1.034	1.618	1.552	1.538	1.275	1.166	0.525	89	86	41	23	-46	6.39E-7	2.13E-5	> 1.00E-4
NCI-H226	1.344	2.908	2.837	2.836	2.327	1.991	1.290	95	95	63	41	-4	3.96E-6	8.14E-5	> 1.00E-4
NCI-H23	0.703	2.045	1.994	1.936	1.524	1.095	0.710	96	92	61	29	1	2.23E-6	> 1.00E-4	> 1.00E-4
NCI-H322M	0.872	1.840	1.832	1.721	1.272	1.078	0.639	99	88	41	21	-27	6.48E-7	2.77E-5	> 1.00E-4
NCI-H460	0.156	1.771	1.871	1.844	0.378	0.225	0.109	106	105	14	4	-30	3.99E-7	1.33E-5	> 1.00E-4
NCI-H522	1.015	2.234	2.123	2.119	1.262	1.002	0.767	91	91	20	-1	-24	3.78E-7	8.72E-6	> 1.00E-4
Colon Cancer															
COLO 205	0.422	1.585	1.541	1.506	0.595	0.304	0.099	96	93	15	-28	-77	3.56E-7	2.22E-6	2.83E-5
HCC-2998	0.380	1.336	1.361	1.337	1.001	0.588	0.456	103	100	65	22	8	2.21E-6	> 1.00E-4	> 1.00E-4
HCT-116	0.223	2.233	2.236	2.208	0.739	0.549	0.189	100	99	26	16	-15	4.64E-7	3.27E-5	> 1.00E-4
HCT-15	0.252	1.489	1.381	1.385	0.584	0.467	0.280	91	92	27	17	2	4.39E-7	> 1.00E-4	> 1.00E-4
HT29	0.298	1.585	1.567	1.547	0.420	0.352	0.187	99	97	9	4	-37	3.45E-7	1.26E-5	> 1.00E-4
KM12	0.339	1.803	1.801	1.720	0.687	0.446	0.195	100	94	24	7	-43	4.25E-7	1.40E-5	> 1.00E-4
SW-620	0.208	1.451	1.427	1.436	0.362	0.383	0.230	98	99	12	14	2	3.67E-7	> 1.00E-4	> 1.00E-4
CNS Cancer															
SF-268	0.630	1.799	1.774	1.747	1.128	1.035	0.524	98	95	43	35	-17	7.23E-7	4.71E-5	> 1.00E-4
SF-295	1.089	2.919	2.777	2.784	1.564	1.176	0.252	92	93	26	5	-77	4.36E-7	1.14E-5	4.69E-5
SF-539	0.874	2.455	2.342	2.371	0.925	0.629	0.133	93	95	3	-28	-85	3.08E-7	1.27E-6	2.44E-5
SNB-19	0.803	2.180	2.106	2.091	1.443	1.295	0.486	95	94	46	36	-39	8.42E-7	2.98E-5	> 1.00E-4
SNB-75	0.673	1.433	1.317	1.330	0.798	0.652	0.252	85	86	16	-3	-63	3.31E-7	6.93E-6	6.13E-5
U251	0.766	2.566	2.460	2.425	1.486	1.160	0.379	94	92	40	22	-51	6.43E-7	2.01E-5	9.84E-5
Melanoma															
LOX IMVI	0.427	2.735	2.634	2.527	1.317	1.097	0.713	96	91	39	29	12	6.05E-7	> 1.00E-4	> 1.00E-4
MALME-3M	0.698	1.180	1.135	1.063	0.868	0.849	0.455	91	76	35	31	-35	4.32E-7	2.97E-5	> 1.00E-4
M14	0.524	2.161	2.101	2.146	0.911	0.822	0.449	96	99	24	18	-14	4.47E-7	3.62E-5	> 1.00E-4
MDA-MB-435	0.503	2.202	2.120	2.056	0.378	0.256	0.135	95	91	-25	-49	-73	2.27E-7	6.11E-7	1.08E-5
SK-MEL-2	1.302	2.373	2.377	2.425	1.713	1.552	0.542	100	105	38	23	-58	6.69E-7	1.93E-5	7.89E-5
SK-MEL-28	0.643	1.795	1.847	1.827	1.209	1.114	0.526	105	103	49	41	-18	9.64E-7	4.92E-5	> 1.00E-4
SK-MEL-5	1.012	3.072	3.052	2.976	1.770	1.520	0.424	99	95	37	25	-58	5.95E-7	1.98E-5	7.97E-5
UACC-257	0.873	1.981	1.932	1.919	1.342	1.456	0.768	96	94	42	53	-12	.	6.52E-5	> 1.00E-4
UACC-62	0.789	2.451	2.345	2.345	1.313	1.163	0.515	94	94	32	23	-35	5.04E-7	2.47E-5	> 1.00E-4
Ovarian Cancer															
IGROV1	0.738	2.116	2.242	2.039	1.268	0.902	0.278	109	94	38	12	-62	6.21E-7	1.44E-5	6.81E-5
OVCAR-3	0.547	1.766	1.680	1.731	0.613	0.491	0.169	93	97	5	-10	-69	3.26E-7	2.22E-6	4.74E-5
OVCAR-4	0.704	1.603	1.566	1.569	1.147	1.031	0.458	96	96	49	36	-35	9.66E-7	3.23E-5	> 1.00E-4
OVCAR-5	0.585	1.572	1.666	1.601	1.216	0.824	0.416	109	103	64	24	-29	2.24E-6	2.86E-5	> 1.00E-4
OVCAR-8	0.562	2.219	2.203	2.186	1.377	1.079	0.619	99	98	49	31	3	9.63E-7	> 1.00E-4	> 1.00E-4
NCI/ADR-RES	0.595	1.920	1.863	1.870	0.897	0.779	0.531	96	96	23	14	-11	4.26E-7	3.64E-5	> 1.00E-4
SK-OV-3	0.550	1.302	1.247	1.294	0.737	0.693	0.269	93	99	25	19	-51	4.58E-7	1.87E-5	9.65E-5
Renal Cancer															
786-0	0.453	1.934	1.890	1.903	1.047	0.793	0.227	97	98	40	23	-50	6.74E-7	2.07E-5	> 1.00E-4
A498	1.817	2.500	2.273	2.312	1.638	1.371	0.947	67	72	-10	-25	-48	1.87E-7	7.58E-7	> 1.00E-4
ACHN	0.389	1.818	1.861	1.794	1.022	0.896	0.241	103	98	44	35	-38	7.84E-7	3.04E-5	> 1.00E-4
RXF 393	0.937	1.956	1.994	1.932	1.408	0.857	0.349	104	98	46	-9	-63	8.45E-7	6.97E-6	5.80E-5
SN12C	0.639	2.192	2.102	2.104	1.268	1.147	0.872	94	94	41	33	15	6.66E-7	> 1.00E-4	> 1.00E-4
TK-10	0.884	1.629	1.540	1.506	1.378	1.208	0.464	88	83	66	44	-48	5.18E-6	3.00E-5	> 1.00E-4
UO-31	0.668	1.971	1.833	1.720	1.265	1.036	0.648	89	81	46	28	-3	7.59E-7	7.98E-5	> 1.00E-4
Prostate Cancer															
PC-3	0.538	2.110	2.062	2.013	0.956	0.751	0.439	97	94	27	14	-18	4.49E-7	2.65E-5	> 1.00E-4
DU-145	0.350	1.305	1.332	1.343	0.841	0.454	0.181	103	104	51	11	-48	1.08E-6	1.52E-5	> 1.00E-4
Breast Cancer															
MCF7	0.578	2.314	2.215	2.242	1.006	0.974	0.660	94	96	25	23	5	4.40E-7	> 1.00E-4	> 1.00E-4
MDA-MB-231/ATCC	0.584	1.418	1.442	1.387	1.059	0.859	0.489	103	96	57	33	-16	1.94E-6	4.67E-5	> 1.00E-4
HS 578T	0.614	1.448	1.393	1.384	0.836	0.573	0.347	93	92	27	-7	-43	4.41E-7	6.27E-6	> 1.00E-4
BT-549	1.051	1.903	1.854	1.867	1.285	1.359	0.710	94	96	27	36	-32	4.67E-7	3.36E-5	> 1.00E-4
T-47D	0.480	1.005	0.993	0.974	0.687	0.663	0.510	98	94	39	35	6	6.39E-7	> 1.00E-4	> 1.00E-4
MDA-MB-468	0.805	1.835	1.741	1.765	0.997	0.954	0.634	91	93	19	14	-21	3.80E-7	2.54E-5	> 1.00E-4

Mean Graphs

Report Date :February 05, 2014

Test Date :September 09, 2013

Panel/Cell Line	Log ₁₀ GI50	GI50	Log ₁₀ TGI	TGI	Log ₁₀ LC50	LC50
Leukemia						
CCRF-CEM	-6.37		> -4.00		> -4.00	
HL-60(TB)	-6.59		-6.14		> -4.00	
K-562	-6.49		> -4.00		> -4.00	
MOLT-4	-6.27		> -4.00		> -4.00	
RPMI-8226	-6.16		> -4.00		> -4.00	
SR	-6.36		> -4.00		> -4.00	
Non-Small Cell Lung Cancer						
A549/ATCC	-6.15		-4.57		> -4.00	
HOP-62	-6.22		-4.63		-4.09	
HOP-92	-6.19		-4.67		> -4.00	
NCI-H226	-5.40		-4.09		> -4.00	
NCI-H23	-5.65		> -4.00		> -4.00	
NCI-H322M	-6.19		-4.56		> -4.00	
NCI-H460	-6.40		-4.88		> -4.00	
NCI-H522	-6.42		-5.06		> -4.00	
Colon Cancer						
COLO 205	-6.45		-5.65		-4.55	
HCC-2998	-5.66		> -4.00		> -4.00	
HCT-116	-6.33		-4.48		> -4.00	
HCT-15	-6.36		> -4.00		> -4.00	
HT29	-6.46		-4.90		> -4.00	
KM12	-6.37		-4.85		> -4.00	
SW-620	-6.44		> -4.00		> -4.00	
CNS Cancer						
SF-268	-6.14		-4.33		> -4.00	
SF-295	-6.36		-4.94		-4.33	
SF-539	-6.51		-5.90		-4.61	
SNB-19	-6.07		-4.53		> -4.00	
SNB-75	-6.48		-5.16		-4.21	
U251	-6.19		-4.70		-4.01	
Melanoma						
LOX IMV1	-6.22		> -4.00		> -4.00	
MALME-3M	-6.36		-4.53		> -4.00	
M14	-6.35		-4.44		> -4.00	
MDA-MB-435	-6.64		-6.21		-4.97	
SK-MEL-2	-6.17		-4.71		-4.10	
SK-MEL-28	-6.02		-4.31		> -4.00	
SK-MEL-5	-6.23		-4.70		-4.10	
UACC-257			-4.19		> -4.00	
UACC-62	-6.30		-4.61		> -4.00	
Ovarian Cancer						
IGROV1	-6.21		-4.84		-4.17	
OVCAR-3	-6.49		-5.65		-4.32	
OVCAR-4	-6.02		-4.49		> -4.00	
OVCAR-5	-5.65		-4.54		> -4.00	
OVCAR-8	-6.02		> -4.00		> -4.00	
NCI/ADR-RES	-6.37		-4.44		> -4.00	
SK-OV-3	-6.34		-4.73		-4.02	
Renal Cancer						
786-0	-6.17		-4.68		> -4.00	
A498	-6.73		-6.12		> -4.00	
ACHN	-6.11		-4.52		> -4.00	
RXF 393	-6.07		-5.16		-4.24	
SN12C	-6.18		> -4.00		> -4.00	
TK-10	-5.29		-4.52		> -4.00	
UO-31	-6.12		-4.10		> -4.00	
Prostate Cancer						
PC-3	-6.35		-4.58		> -4.00	
DU-145	-5.97		-4.82		> -4.00	
Breast Cancer						
MCF7	-6.36		> -4.00		> -4.00	
MDA-MB-231/ATCC	-5.71		-4.33		> -4.00	
HS 578T	-6.36		-5.20		> -4.00	
BT-549	-6.33		-4.47		> -4.00	
T-47D	-6.19		> -4.00		> -4.00	
MDA-MB-468	-6.42		-4.59		> -4.00	

MID
Delta
Range

-6.22
0.51
1.44

-4.61
1.6
2.21

-4.06
0.91
0.97

