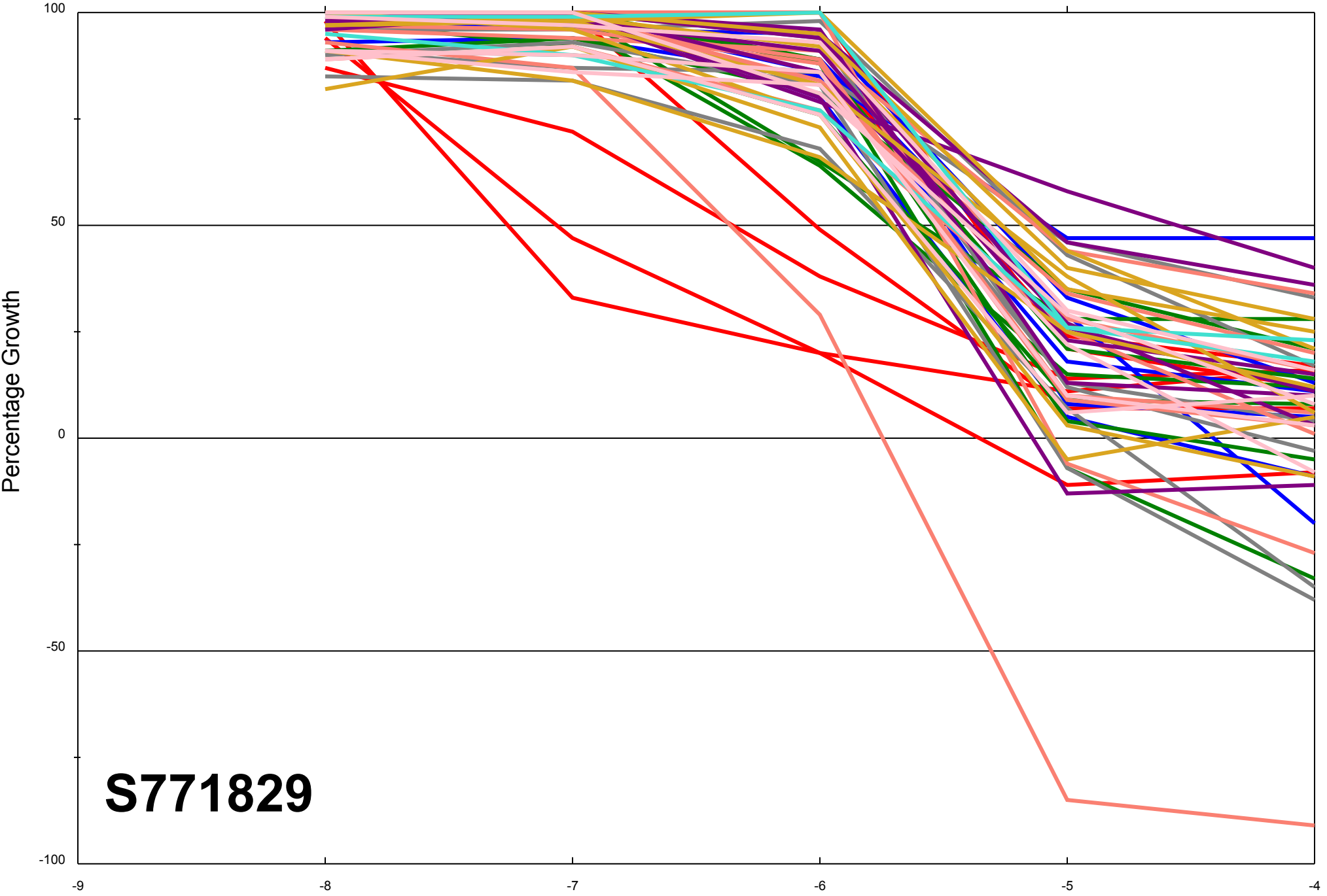


Dose Response Curves

Report Date:December 09, 2013

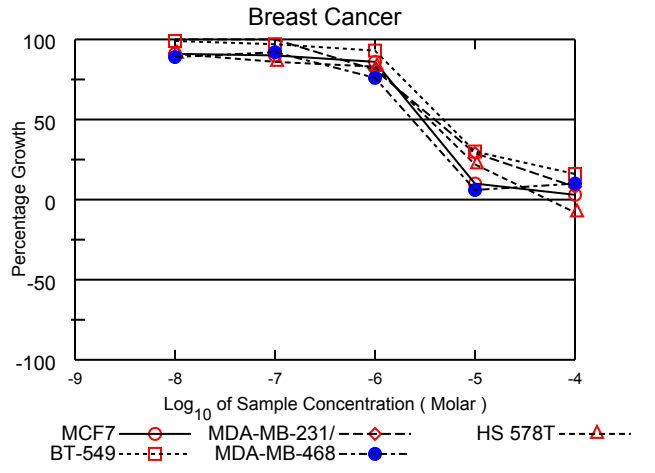
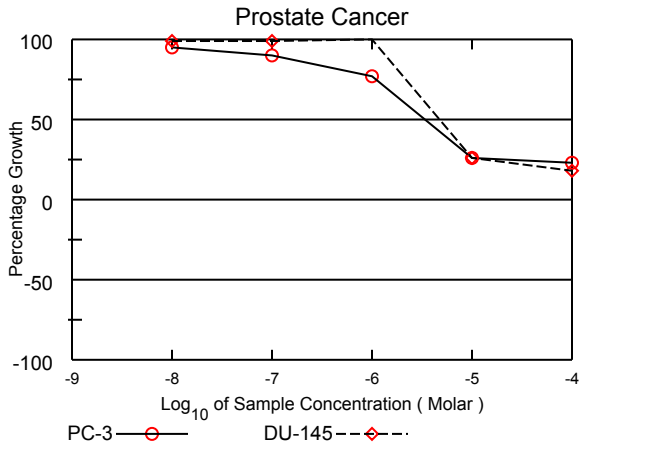
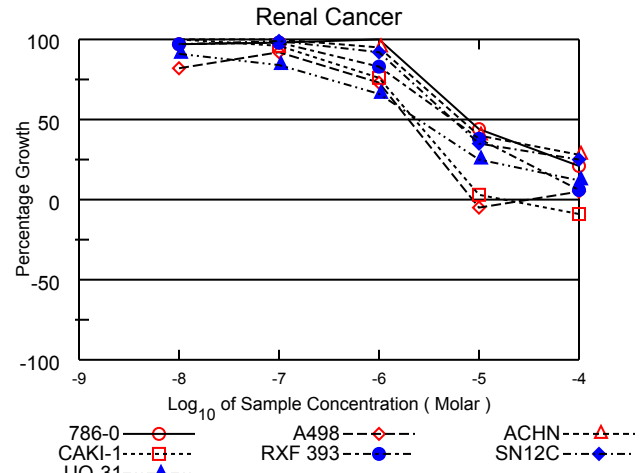
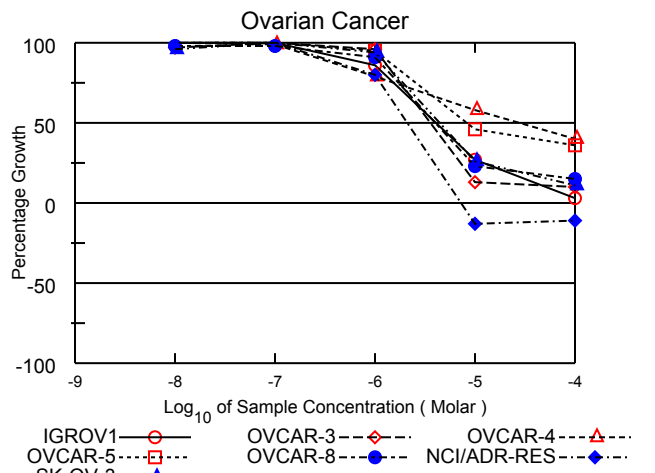
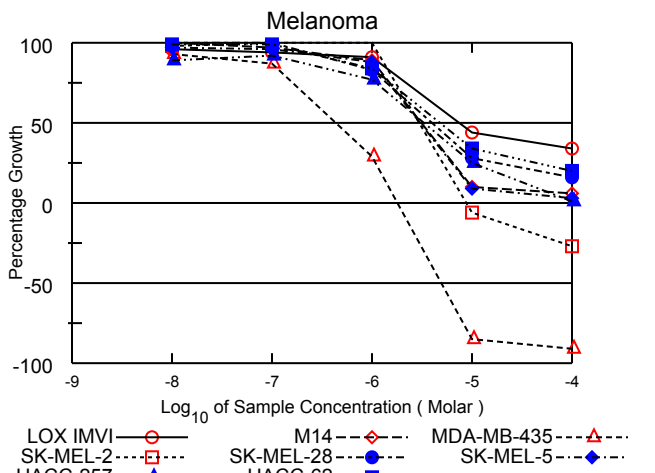
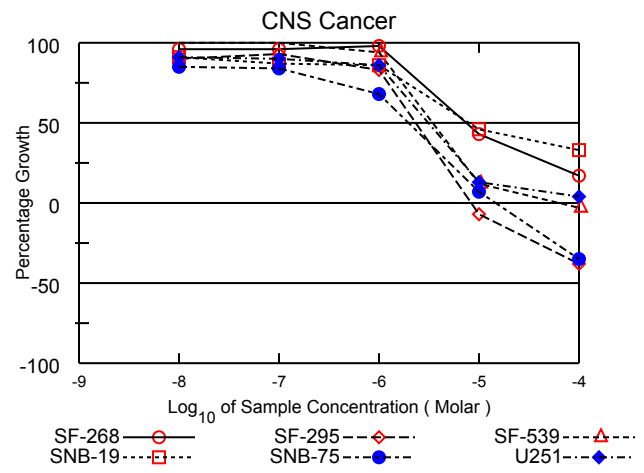
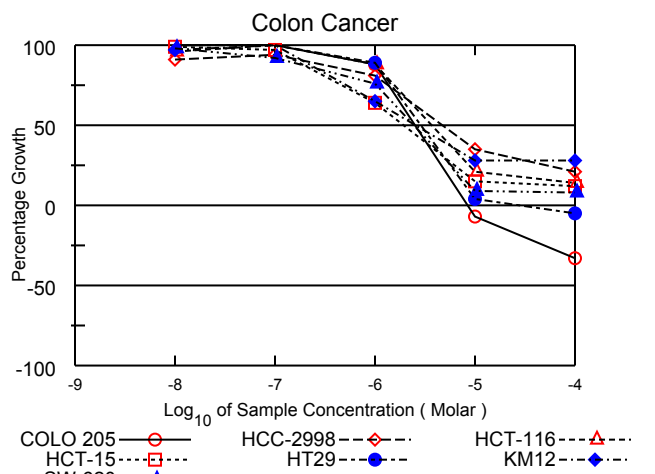
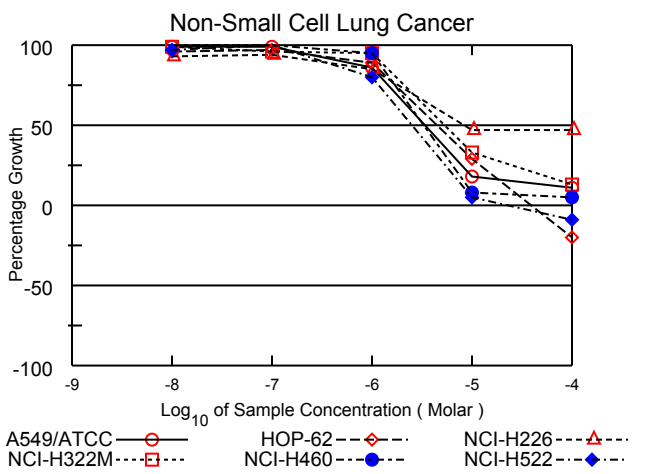
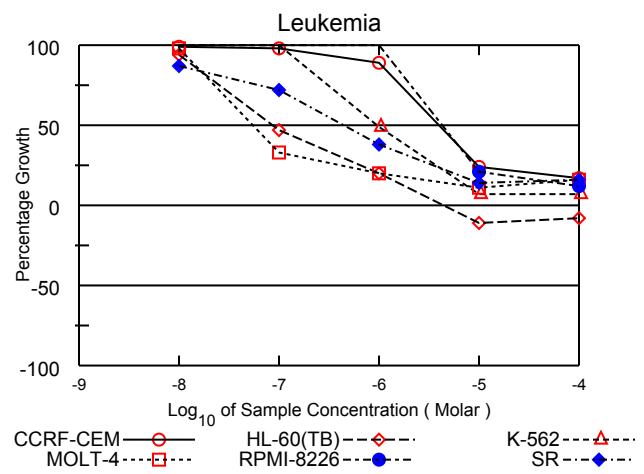
Test Date:April 08, 2013

All Cell Lines



S771829

Log₁₀ of Sample Concentration (Molar)



National Cancer Institute Developmental Therapeutics Program In-Vitro Testing Results

NSC : 771829 / 1	Experiment ID : 1304NS55	Test Type : 08	Units : Molar
Report Date : December 09, 2013	Test Date : April 08, 2013	QNS :	MC :
COMI : A4463/0190792 (125333)	Stain Reagent : SRB Dual-Pass Related	SSPL : 0YAR	

Panel/Cell Line	Log10 Concentration												GI50	TGI	LC50
	Time Zero	Ctrl	-8.0	-7.0	-6.0	-5.0	-4.0	-8.0	-7.0	-6.0	-5.0	-4.0			
Leukemia															
CCRF-CEM	0.520	2.655	2.628	2.623	2.422	1.041	0.891	99	98	89	24	17	4.02E-6	> 1.00E-4	> 1.00E-4
HL-60(TB)	1.055	2.774	2.669	1.855	1.406	0.938	0.971	94	47	20	-11	-8	8.45E-8	4.45E-6	> 1.00E-4
K-562	0.205	1.808	1.845	1.802	0.986	0.314	0.310	102	100	49	7	7	9.42E-7	> 1.00E-4	> 1.00E-4
MOLT-4	0.758	2.710	2.679	1.405	1.152	0.981	1.074	98	33	20	11	16	5.52E-8	> 1.00E-4	> 1.00E-4
RPMI-8226	0.779	2.525	2.589	2.540	2.538	1.144	0.997	104	101	101	21	12	4.32E-6	> 1.00E-4	> 1.00E-4
SR	0.524	2.667	2.381	2.077	1.335	0.820	0.874	87	72	38	14	16	4.45E-7	> 1.00E-4	> 1.00E-4
Non-Small Cell Lung Cancer															
A549/ATCC	0.519	2.017	1.997	1.999	1.803	0.795	0.687	99	99	86	18	11	3.39E-6	> 1.00E-4	> 1.00E-4
HOP-62	0.689	2.121	2.069	2.073	1.967	1.098	0.551	96	97	89	29	-20	4.43E-6	3.87E-5	> 1.00E-4
NCI-H226	1.253	2.535	2.446	2.461	2.343	1.859	1.854	93	94	85	47	47	8.46E-6	> 1.00E-4	> 1.00E-4
NCI-H322M	0.599	1.549	1.538	1.511	1.501	0.912	0.719	99	96	95	33	13	5.31E-6	> 1.00E-4	> 1.00E-4
NCI-H460	0.340	2.990	3.059	3.075	2.848	0.544	0.467	103	103	95	8	5	3.26E-6	> 1.00E-4	> 1.00E-4
NCI-H522	1.247	2.328	2.298	2.378	2.112	1.296	1.132	97	105	80	5	-9	2.50E-6	2.14E-5	> 1.00E-4
Colon Cancer															
COLO 205	0.470	2.008	2.039	2.051	1.818	0.436	0.315	102	103	88	-7	-33	2.49E-6	8.39E-6	> 1.00E-4
HCC-2998	0.528	1.752	1.648	1.679	1.525	0.953	0.785	91	94	81	35	21	4.70E-6	> 1.00E-4	> 1.00E-4
HCT-116	0.264	2.291	2.214	2.282	2.041	0.683	0.548	96	100	88	21	14	3.65E-6	> 1.00E-4	> 1.00E-4
HCT-15	0.331	2.480	2.451	2.415	1.702	0.644	0.584	99	97	64	15	12	1.91E-6	> 1.00E-4	> 1.00E-4
HT29	0.260	1.256	1.275	1.292	1.151	0.298	0.247	102	104	89	4	-5	2.89E-6	2.69E-5	> 1.00E-4
KM12	0.665	3.082	3.003	3.080	2.244	1.351	1.341	97	100	65	28	28	2.60E-6	> 1.00E-4	> 1.00E-4
SW-620	0.408	2.620	2.576	2.433	2.082	0.611	0.586	98	92	76	9	8	2.43E-6	> 1.00E-4	> 1.00E-4
CNS Cancer															
SF-268	0.612	2.060	1.996	2.003	2.036	1.230	0.854	96	96	98	43	17	7.38E-6	> 1.00E-4	> 1.00E-4
SF-295	0.899	2.504	2.339	2.397	2.238	0.840	0.560	90	93	83	-7	-38	2.35E-6	8.44E-6	> 1.00E-4
SF-539	0.979	2.802	2.841	2.806	2.689	1.205	0.951	102	100	94	12	-3	3.45E-6	6.45E-5	> 1.00E-4
SNB-19	0.755	2.241	2.109	2.054	2.031	1.439	1.252	91	87	86	46	33	7.95E-6	> 1.00E-4	> 1.00E-4
SNB-75	0.959	1.885	1.743	1.737	1.590	1.026	0.624	85	84	68	7	-35	1.98E-6	1.48E-5	> 1.00E-4
U251	0.585	2.076	1.935	1.925	1.861	0.786	0.648	91	90	86	13	4	3.11E-6	> 1.00E-4	> 1.00E-4
Melanoma															
LOX IMVI	0.658	2.995	2.901	2.854	2.795	1.676	1.443	96	94	91	44	34	7.33E-6	> 1.00E-4	> 1.00E-4
M14	0.546	2.130	2.145	2.076	1.957	0.708	0.638	101	97	89	10	6	3.13E-6	> 1.00E-4	> 1.00E-4
MDA-MB-435	0.544	2.162	2.055	1.954	1.021	0.079	0.052	93	87	29	-85	-91	4.40E-7	1.80E-6	4.91E-6
SK-MEL-2	0.753	1.198	1.191	1.209	1.212	0.710	0.551	98	102	103	-6	-27	3.07E-6	8.85E-6	> 1.00E-4
SK-MEL-28	0.592	1.574	1.583	1.577	1.404	0.869	0.753	101	100	83	28	16	3.98E-6	> 1.00E-4	> 1.00E-4
SK-MEL-5	0.929	2.832	2.768	2.749	2.600	1.092	0.985	97	96	88	9	3	3.00E-6	> 1.00E-4	> 1.00E-4
UACC-257	0.905	1.651	1.567	1.593	1.477	1.092	0.913	89	92	77	25	1	3.29E-6	> 1.00E-4	> 1.00E-4
UACC-62	0.902	2.753	2.730	2.730	2.450	1.533	1.268	99	99	84	34	20	4.77E-6	> 1.00E-4	> 1.00E-4
Ovarian Cancer															
IGROV1	0.486	1.926	1.995	1.953	1.720	0.878	0.531	105	102	86	27	3	4.07E-6	> 1.00E-4	> 1.00E-4
OVCAR-3	0.705	2.047	2.011	2.053	1.997	0.875	0.834	97	100	96	13	10	3.57E-6	> 1.00E-4	> 1.00E-4
OVCAR-4	0.559	1.125	1.137	1.122	1.006	0.886	0.787	102	99	79	58	40	2.75E-5	> 1.00E-4	> 1.00E-4
OVCAR-5	0.593	1.453	1.482	1.476	1.407	0.988	0.903	103	103	95	46	36	8.24E-6	> 1.00E-4	> 1.00E-4
OVCAR-8	0.588	2.092	2.064	2.055	1.958	0.934	0.816	98	98	91	23	15	4.01E-6	> 1.00E-4	> 1.00E-4
NCI/ADR-RES	0.543	2.025	2.025	2.042	1.735	0.471	0.484	100	101	80	-13	-11	2.11E-6	7.22E-6	> 1.00E-4
SK-OV-3	0.584	1.492	1.460	1.530	1.433	0.823	0.683	96	104	94	26	11	4.44E-6	> 1.00E-4	> 1.00E-4
Renal Cancer															
786-0	0.584	2.470	2.421	2.435	2.486	1.415	0.987	97	98	101	44	21	7.86E-6	> 1.00E-4	> 1.00E-4
A498	1.700	2.647	2.478	2.567	2.389	1.619	1.745	82	92	73	-5	5	1.97E-6		> 1.00E-4
ACHN	0.411	2.025	2.087	2.067	1.938	1.065	0.856	104	103	95	40	28	6.67E-6	> 1.00E-4	> 1.00E-4
CAKI-1	0.648	2.332	2.365	2.259	1.927	0.705	0.587	102	96	76	3	-9	2.28E-6	1.84E-5	> 1.00E-4
RXF 393	0.948	1.782	1.754	1.769	1.643	1.261	0.997	97	98	83	38	6	5.34E-6	> 1.00E-4	> 1.00E-4
SN12C	0.643	2.516	2.469	2.501	2.366	1.301	1.118	97	99	92	35	25	5.47E-6	> 1.00E-4	> 1.00E-4
UO-31	0.655	1.941	1.825	1.732	1.504	0.971	0.813	91	84	66	25	12	2.43E-6	> 1.00E-4	> 1.00E-4
Prostate Cancer															
PC-3	0.698	2.230	2.148	2.073	1.878	1.100	1.055	95	90	77	26	23	3.40E-6	> 1.00E-4	> 1.00E-4
DU-145	0.460	1.769	1.751	1.755	1.784	0.806	0.702	99	99	101	26	18	4.83E-6	> 1.00E-4	> 1.00E-4
Breast Cancer															
MCF7	0.419	2.341	2.172	2.150	2.078	0.606	0.477	91	90	86	10	3	2.98E-6	> 1.00E-4	> 1.00E-4
MDA-MB-231/ATCC	0.681	1.526	1.554	1.569	1.365	0.924	0.745	103	105	81	29	8	3.92E-6	> 1.00E-4	> 1.00E-4
HS 578T	1.268	2.213	2.126	2.077	2.053	1.475	1.169	91	86	83	22	-8	3.47E-6	5.45E-5	> 1.00E-4
BT-549	1.240	2.396	2.380	2.362	2.314	1.585	1.421	99	97	93	30	16	4.79E-6	> 1.00E-4	> 1.00E-4
MDA-MB-468	0.767	1.659	1.559	1.589	1.445	0.821	0.859	89	92	76	6	10	2.35E-6	> 1.00E-4	> 1.00E-4

Mean Graphs

Report Date :December 09, 2013

Test Date :April 08, 2013

