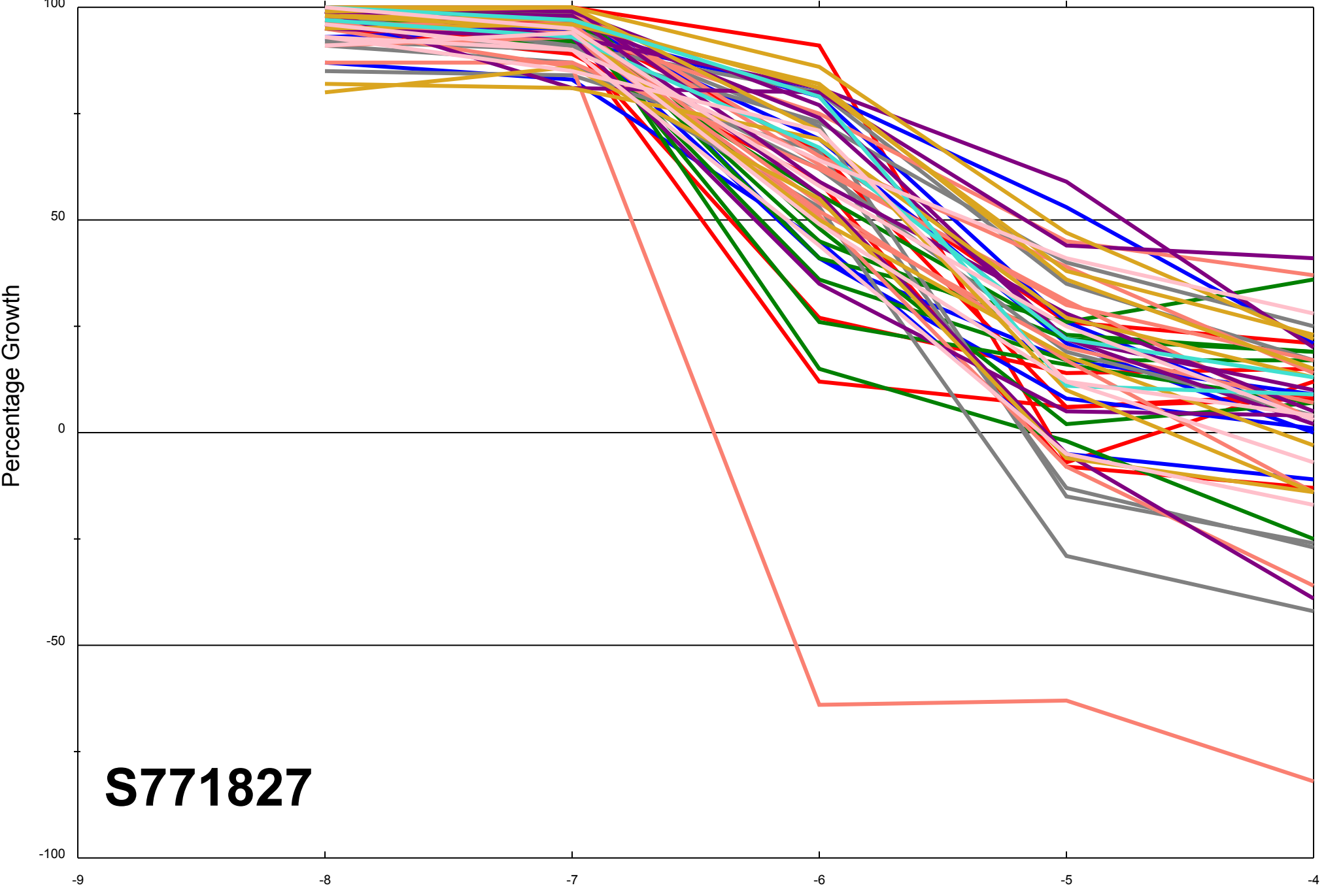


Dose Response Curves

Report Date:December 09, 2013

Test Date:April 08, 2013

All Cell Lines



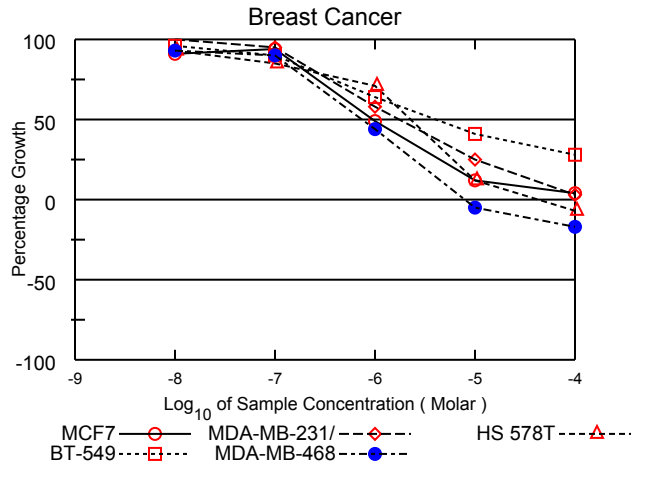
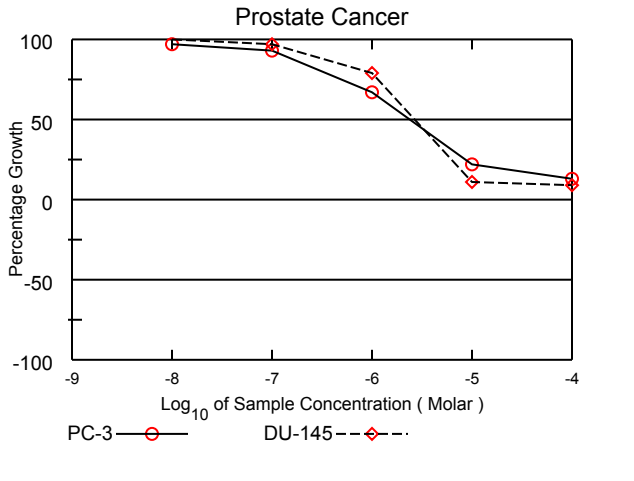
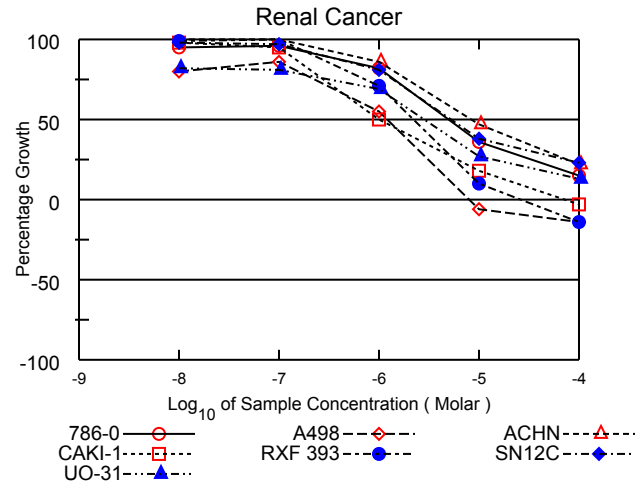
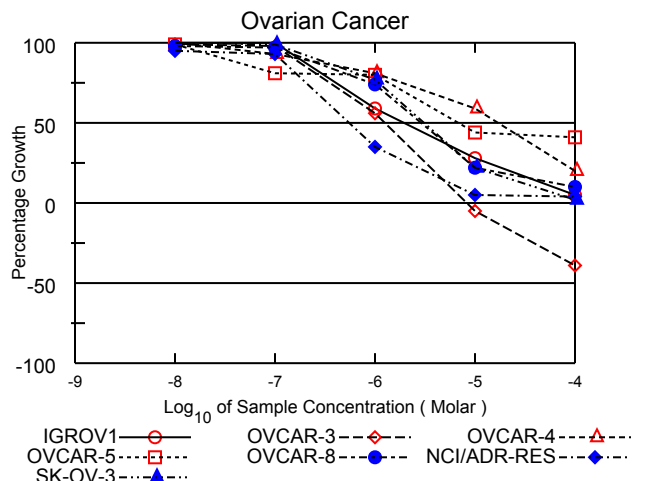
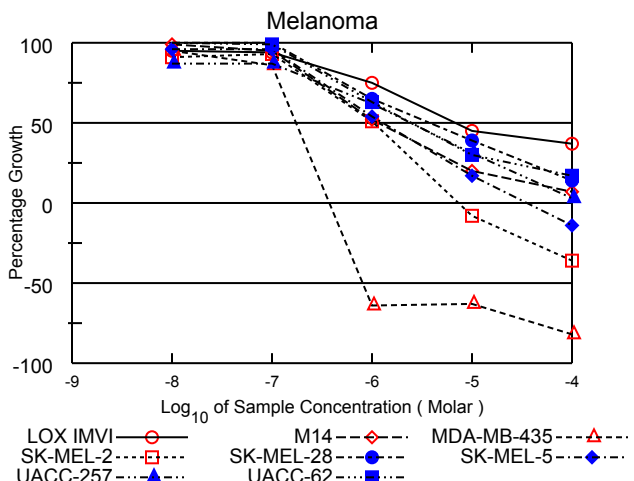
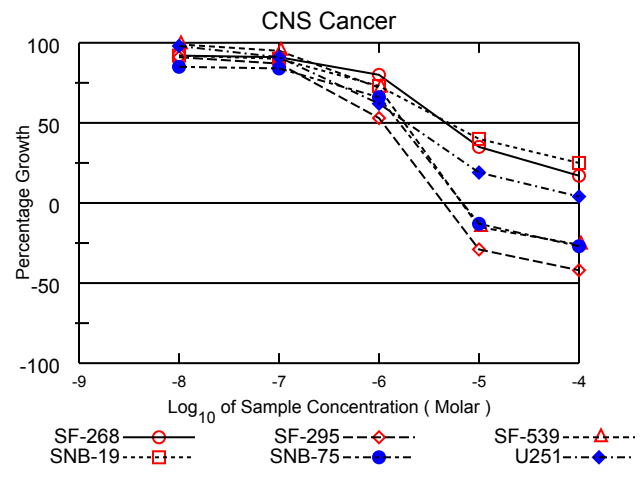
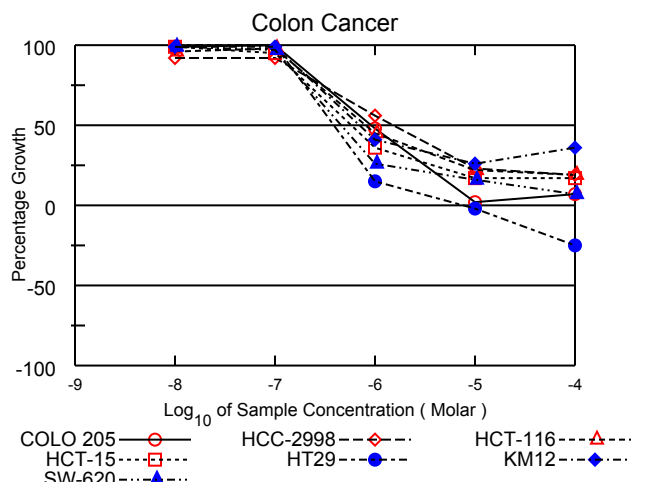
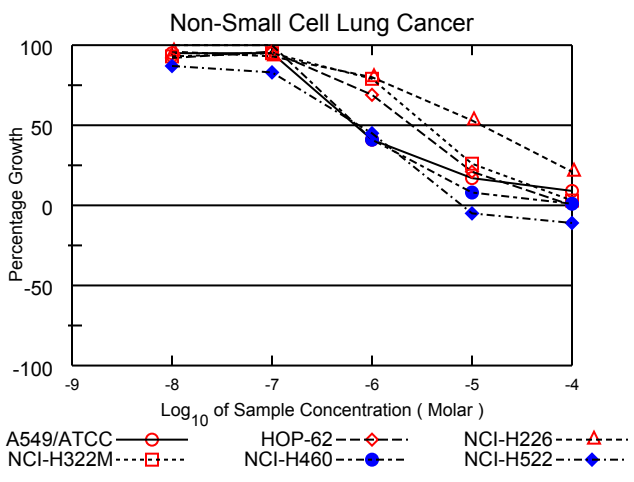
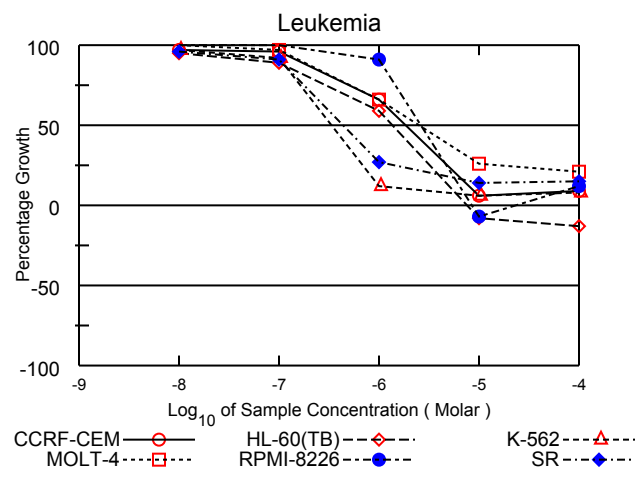
**S771827**

Log<sub>10</sub> of Sample Concentration (Molar)

Dose Response Curves

Report Date: December 09, 2013

Test Date: April 08, 2013



# National Cancer Institute Developmental Therapeutics Program In-Vitro Testing Results

NSC : 771827 / 1	Experiment ID : 1304NS55	Test Type : 08	Units : Molar
Report Date : December 09, 2013	Test Date : April 08, 2013	QNS :	MC :
COMI : A4463/0190789 (125320)	Stain Reagent : SRB Dual-Pass Related	SSPL : 0YAR	

Panel/Cell Line	Log10 Concentration												GI50	TGI	LC50
	Time Zero	Ctrl	-8.0	-7.0	-6.0	-5.0	-4.0	-8.0	-7.0	-6.0	-5.0	-4.0			
<b>Leukemia</b>															
CCRF-CEM	0.520	2.774	2.697	2.675	2.006	0.654	0.725	97	96	66	6	9	1.84E-6	> 1.00E-4	> 1.00E-4
HL-60(TB)	1.055	2.746	2.658	2.567	2.047	0.973	0.917	95	89	59	-8	-13	1.35E-6	> 1.00E-4	> 1.00E-4
K-562	0.205	1.752	1.706	1.622	0.386	0.298	0.331	97	92	12	6	8	3.31E-7	> 1.00E-4	> 1.00E-4
MOLT-4	0.758	2.588	2.631	2.541	1.963	1.228	1.148	102	97	66	26	21	2.48E-6	> 1.00E-4	> 1.00E-4
RPMI-8226	0.779	2.529	2.618	2.563	2.376	0.724	0.981	105	102	91	-7	12	2.63E-6	> 1.00E-4	> 1.00E-4
SR	0.524	2.573	2.487	2.392	1.068	0.813	0.835	96	91	27	14	15	4.34E-7	> 1.00E-4	> 1.00E-4
<b>Non-Small Cell Lung Cancer</b>															
A549/ATCC	0.519	1.992	1.919	1.916	1.124	0.770	0.657	95	95	41	17	9	6.82E-7	> 1.00E-4	> 1.00E-4
HOP-62	0.689	2.068	1.955	2.019	1.645	0.985	0.687	92	96	69	21	.	2.53E-6	9.62E-5	> 1.00E-4
NCI-H226	1.253	2.502	2.446	2.409	2.250	1.916	1.516	96	93	80	53	21	1.25E-5	> 1.00E-4	> 1.00E-4
NCI-H322M	0.599	1.480	1.422	1.435	1.292	0.831	0.624	93	95	79	26	3	3.52E-6	> 1.00E-4	> 1.00E-4
NCI-H460	0.340	2.927	3.024	2.968	1.404	0.551	0.357	104	102	41	8	1	7.13E-7	> 1.00E-4	> 1.00E-4
NCI-H522	1.247	2.400	2.253	2.206	1.762	1.188	1.116	87	83	45	-5	-11	7.26E-7	8.01E-6	> 1.00E-4
<b>Colon Cancer</b>															
COLO 205	0.470	1.975	1.964	2.020	1.187	0.495	0.575	99	103	48	2	7	9.06E-7	> 1.00E-4	> 1.00E-4
HCC-2998	0.528	1.750	1.650	1.654	1.217	0.812	0.765	92	92	56	23	19	1.56E-6	> 1.00E-4	> 1.00E-4
HCT-116	0.264	2.321	2.241	2.272	1.186	0.712	0.645	96	98	45	22	19	7.97E-7	> 1.00E-4	> 1.00E-4
HCT-15	0.331	2.300	2.275	2.202	1.038	0.670	0.670	99	95	36	17	17	5.77E-7	> 1.00E-4	> 1.00E-4
HT29	0.260	1.259	1.276	1.256	0.412	0.255	0.194	102	100	15	-2	-25	3.88E-7	7.72E-6	> 1.00E-4
KM12	0.665	3.148	3.134	3.134	1.677	1.321	1.552	99	99	41	26	36	6.95E-7	> 1.00E-4	> 1.00E-4
SW-620	0.408	2.524	2.497	2.466	0.961	0.751	0.550	99	97	26	16	7	4.62E-7	> 1.00E-4	> 1.00E-4
<b>CNS Cancer</b>															
SF-268	0.612	2.097	1.984	1.959	1.803	1.137	0.858	92	91	80	35	17	4.71E-6	> 1.00E-4	> 1.00E-4
SF-295	0.899	2.541	2.401	2.321	1.777	0.635	0.518	91	87	53	-29	-42	1.10E-6	4.42E-6	> 1.00E-4
SF-539	0.979	2.856	2.836	2.760	2.337	0.836	0.724	99	95	72	-15	-26	1.81E-6	6.78E-6	> 1.00E-4
SNB-19	0.755	2.241	2.116	2.093	1.845	1.357	1.130	92	90	73	40	25	5.13E-6	> 1.00E-4	> 1.00E-4
SNB-75	0.959	1.800	1.676	1.670	1.513	0.839	0.702	85	84	66	-13	-27	1.59E-6	6.92E-6	> 1.00E-4
U251	0.585	2.061	2.026	1.934	1.506	0.872	0.643	98	91	62	19	4	1.94E-6	> 1.00E-4	> 1.00E-4
<b>Melanoma</b>															
LOX IMVI	0.658	3.037	2.912	2.895	2.433	1.728	1.531	95	94	75	45	37	6.77E-6	> 1.00E-4	> 1.00E-4
M14	0.546	2.086	2.071	2.013	1.353	0.854	0.653	99	95	52	20	7	1.18E-6	> 1.00E-4	> 1.00E-4
MDA-MB-435	0.544	2.113	2.038	1.896	0.198	0.202	0.097	95	86	-64	-63	-82	1.74E-7	3.76E-7	8.10E-7
SK-MEL-2	0.753	1.207	1.167	1.174	0.984	0.692	0.482	91	93	51	-8	-36	1.03E-6	7.29E-6	> 1.00E-4
SK-MEL-28	0.592	1.536	1.578	1.558	1.201	0.958	0.724	104	102	65	39	14	3.66E-6	> 1.00E-4	> 1.00E-4
SK-MEL-5	0.929	2.915	2.833	2.833	2.003	1.261	0.801	96	96	54	17	-14	1.29E-6	3.53E-5	> 1.00E-4
UACC-257	0.905	1.663	1.567	1.561	1.378	1.137	0.929	87	87	62	31	3	2.45E-6	> 1.00E-4	> 1.00E-4
UACC-62	0.902	2.732	2.750	2.708	2.062	1.449	1.207	101	99	63	30	17	2.51E-6	> 1.00E-4	> 1.00E-4
<b>Ovarian Cancer</b>															
IGROV1	0.486	1.543	1.587	1.557	1.108	0.782	0.544	104	101	59	28	5	1.93E-6	> 1.00E-4	> 1.00E-4
OVCAR-3	0.705	2.039	2.030	2.010	1.455	0.673	0.428	99	98	56	-5	-39	1.27E-6	8.42E-6	> 1.00E-4
OVCAR-4	0.559	1.127	1.126	1.088	1.022	0.895	0.673	100	93	81	59	20	1.71E-5	> 1.00E-4	> 1.00E-4
OVCAR-5	0.593	1.506	1.492	1.334	1.325	0.996	0.971	99	81	80	44	41	6.89E-6	> 1.00E-4	> 1.00E-4
OVCAR-8	0.588	2.087	2.063	2.041	1.702	0.920	0.739	98	97	74	22	10	2.92E-6	> 1.00E-4	> 1.00E-4
NCI/ADR-RES	0.543	2.131	2.045	2.028	1.107	0.621	0.602	95	93	35	5	4	5.62E-7	> 1.00E-4	> 1.00E-4
SK-OV-3	0.584	1.482	1.481	1.477	1.272	0.782	0.598	100	99	77	22	2	3.07E-6	> 1.00E-4	> 1.00E-4
<b>Renal Cancer</b>															
786-0	0.584	2.551	2.461	2.470	2.201	1.301	0.886	95	96	82	36	15	5.06E-6	> 1.00E-4	> 1.00E-4
A498	1.700	2.646	2.461	2.510	2.223	1.596	1.462	80	86	55	-6	-14	1.22E-6	7.95E-6	> 1.00E-4
ACHN	0.411	1.843	1.842	1.950	1.645	1.091	0.728	100	107	86	47	22	8.59E-6	> 1.00E-4	> 1.00E-4
CAKI-1	0.648	2.414	2.387	2.329	1.524	0.969	0.627	98	95	50	18	-3	9.81E-7	7.01E-5	> 1.00E-4
RXF 393	0.948	1.748	1.744	1.747	1.516	1.032	0.820	99	100	71	10	-14	2.22E-6	2.72E-5	> 1.00E-4
SN12C	0.643	2.571	2.534	2.508	2.202	1.372	1.079	98	97	81	38	23	5.21E-6	> 1.00E-4	> 1.00E-4
UO-31	0.655	1.783	1.584	1.573	1.437	0.964	0.807	82	81	69	27	13	2.88E-6	> 1.00E-4	> 1.00E-4
<b>Prostate Cancer</b>															
PC-3	0.698	2.303	2.252	2.183	1.775	1.055	0.905	97	93	67	22	13	2.40E-6	> 1.00E-4	> 1.00E-4
DU-145	0.460	1.846	1.844	1.799	1.550	0.607	0.586	100	97	79	11	9	2.63E-6	> 1.00E-4	> 1.00E-4
<b>Breast Cancer</b>															
MCF7	0.419	2.218	2.062	2.106	1.293	0.627	0.483	91	94	49	12	4	9.31E-7	> 1.00E-4	> 1.00E-4
MDA-MB-231/ATCC	0.681	1.524	1.541	1.481	1.173	0.895	0.703	102	95	58	25	3	1.79E-6	> 1.00E-4	> 1.00E-4
HS 578T	1.268	2.226	2.160	2.081	1.944	1.380	1.182	93	85	71	12	-7	2.23E-6	4.28E-5	> 1.00E-4
BT-549	1.240	2.510	2.458	2.388	2.048	1.761	1.598	96	90	64	41	28	3.99E-6	> 1.00E-4	> 1.00E-4
MDA-MB-468	0.767	1.616	1.555	1.534	1.143	0.731	0.633	93	91	44	-5	-17	7.49E-7	8.00E-6	> 1.00E-4

Mean Graphs

Report Date :December 09, 2013

Test Date :April 08, 2013

