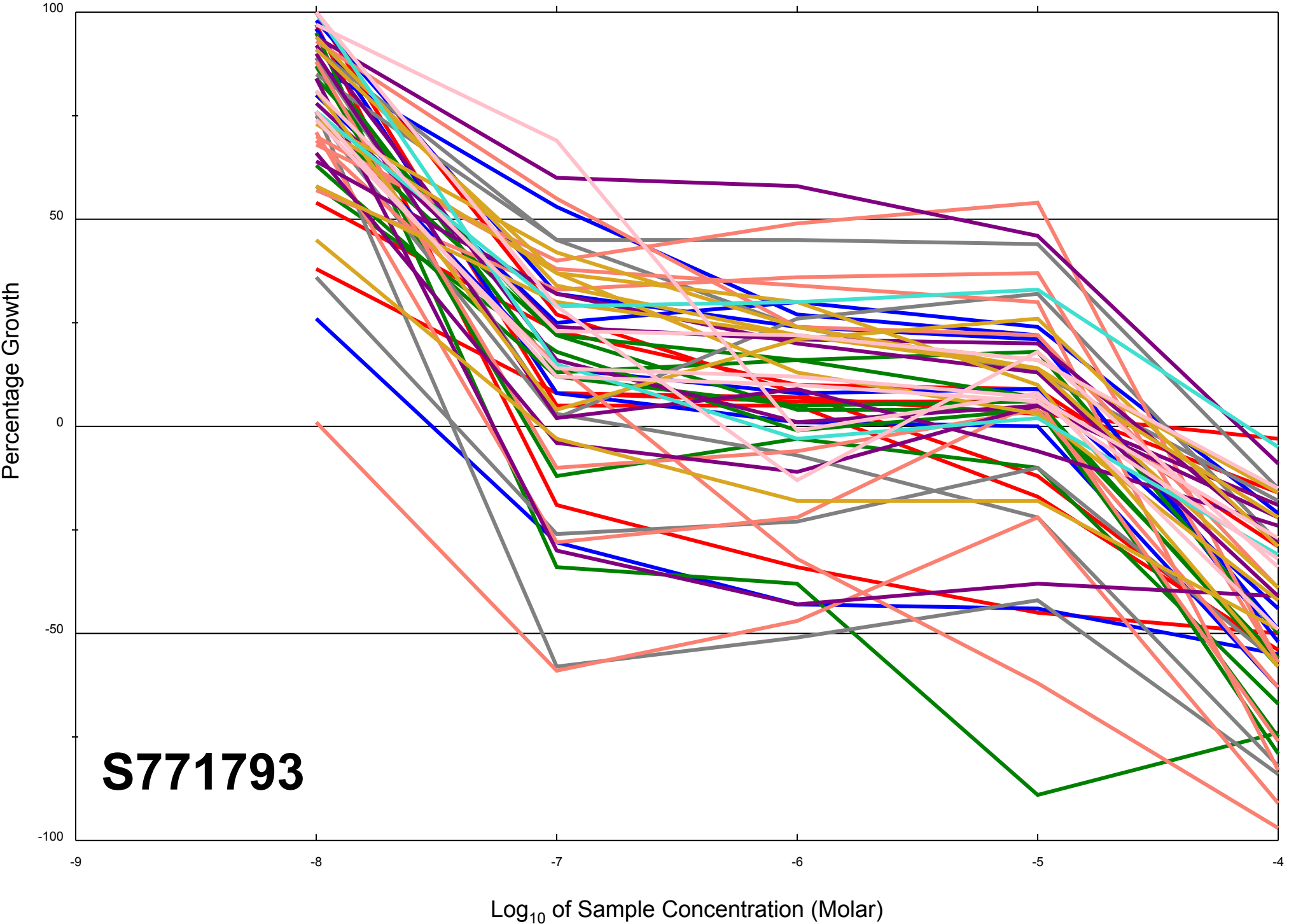


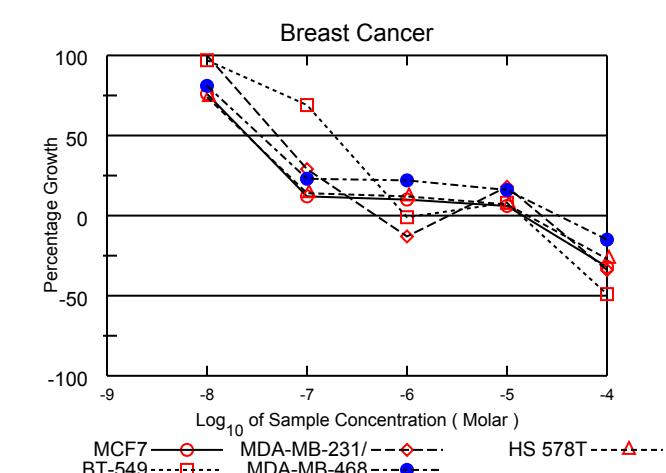
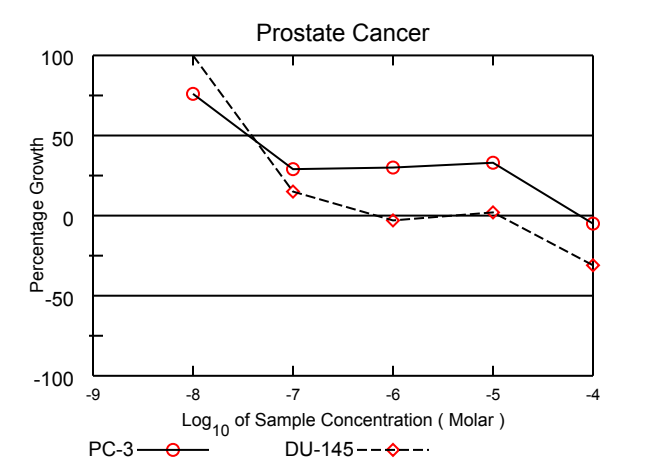
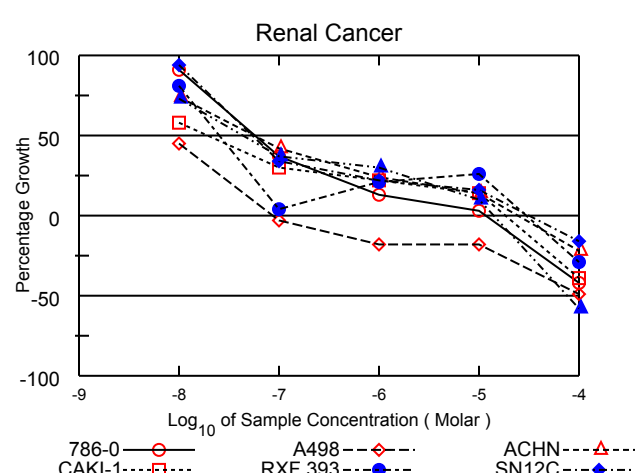
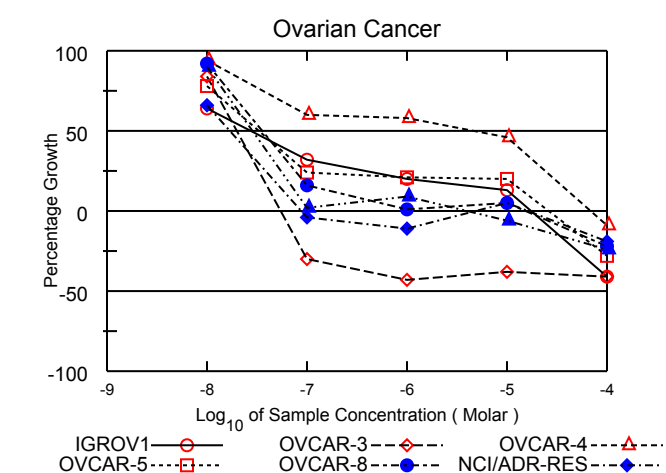
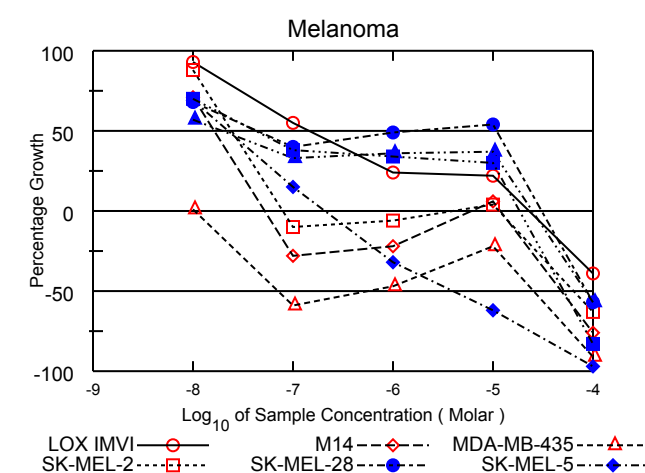
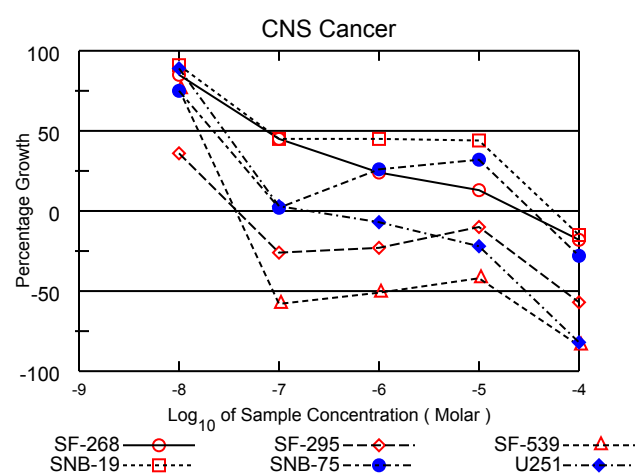
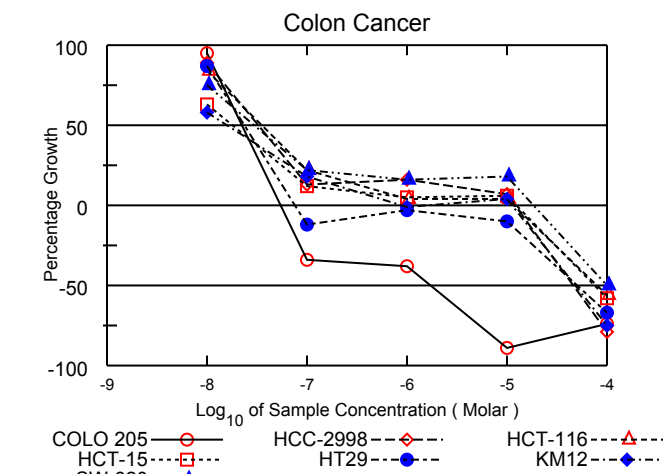
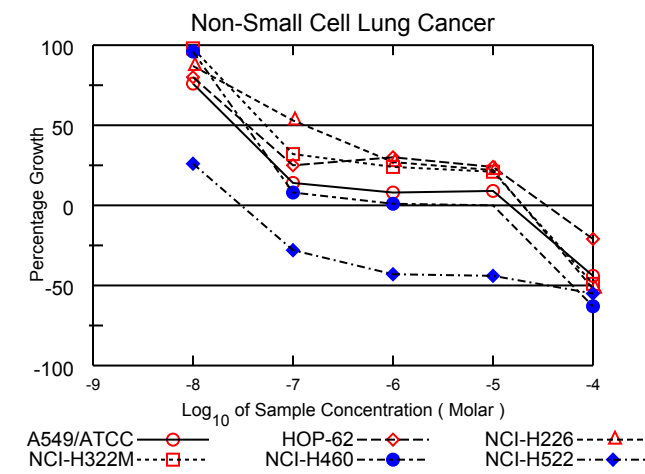
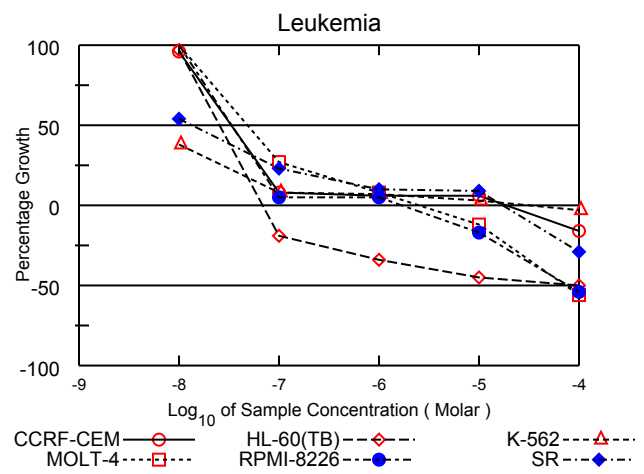
Dose Response Curves

Report Date:December 09, 2013

Test Date:April 08, 2013

All Cell Lines





National Cancer Institute Developmental Therapeutics Program In-Vitro Testing Results

NSC : 771793 / 1	Experiment ID : 1304NS55	Test Type : 08	Units : Molar
Report Date : December 09, 2013	Test Date : April 08, 2013	QNS :	MC :
COMI : NMR/22257607 (124127)	Stain Reagent : SRB Dual-Pass Related	SSPL : 0YAR	

Panel/Cell Line	Log10 Concentration												GI50	TGI	LC50
	Time Zero	Ctrl	-8.0	-7.0	-6.0	-5.0	-4.0	-8.0	-7.0	-6.0	-5.0	-4.0			
Leukemia															
CCRF-CEM	0.520	2.730	2.633	0.687	0.655	0.643	0.437	96	8	6	6	-16	3.30E-8	1.81E-5	> 1.00E-4
HL-60(TB)	1.055	2.983	2.935	0.856	0.696	0.582	0.526	97	-19	-34	-45	-50	2.56E-8	6.88E-8	9.40E-5
K-562	0.205	1.608	0.742	0.312	0.301	0.251	0.199	38	8	7	3	-3	< 1.00E-8	3.35E-5	> 1.00E-4
MOLT-4	0.758	2.675	2.838	1.280	0.913	0.670	0.333	109	27	8	-12	-56	5.25E-8	2.57E-6	7.30E-5
SRM1-8226	0.779	2.477	2.541	0.861	0.871	0.643	0.361	104	5	5	-17	-54	3.49E-8	1.72E-6	7.92E-5
SR	0.524	2.487	1.581	0.973	0.717	0.706	0.372	54	23	10	9	-29	1.33E-8	1.74E-5	> 1.00E-4
Non-Small Cell Lung Cancer															
A549/ATCC	0.519	1.975	1.631	0.719	0.643	0.656	0.291	76	14	8	9	-44	2.63E-8	1.50E-5	> 1.00E-4
HOP-62	0.689	1.941	1.695	1.000	1.064	0.984	0.544	80	25	30	24	-21	3.52E-8	3.37E-5	> 1.00E-4
NCI-H226	1.253	2.694	2.514	2.010	1.639	1.577	0.605	87	53	27	22	-52	1.25E-7	2.01E-5	9.47E-5
NCI-H322M	0.599	1.496	1.476	0.884	0.815	0.788	0.305	98	32	24	21	-49	5.28E-8	1.99E-5	> 1.00E-4
NCI-H460	0.340	3.027	2.918	0.547	0.375	0.344	0.125	96	8	1	.	-63	3.32E-8	1.01E-5	6.16E-5
NCI-H522	1.247	2.494	1.569	0.902	0.716	0.703	0.560	26	-28	-43	-44	-55	< 1.00E-8	3.04E-8	3.60E-5
Colon Cancer															
COLO 205	0.470	1.756	1.695	0.309	0.294	0.054	0.121	95	-34	-38	-89	-74	2.23E-8	5.43E-8	1.75E-6
HCC-2998	0.528	1.514	1.406	0.655	0.682	0.601	0.112	89	13	16	7	-79	3.25E-8	1.22E-5	4.62E-5
HCT-116	0.264	2.173	1.863	0.685	0.349	0.347	0.116	84	22	4	4	-56	3.52E-8	1.18E-5	7.89E-5
HCT-15	0.331	2.081	1.435	0.546	0.413	0.432	0.141	63	12	5	6	-58	1.81E-8	1.23E-5	7.60E-5
HT29	0.260	1.334	1.197	0.230	0.252	0.234	0.085	87	-12	-3	-10	-67	2.38E-8	7.64E-8	4.98E-5
KM12	0.665	2.766	1.879	1.034	0.659	0.743	0.163	58	18	-1	4	-75	1.56E-8	.	4.77E-5
SW-620	0.408	2.560	2.023	0.873	0.762	0.803	0.205	75	22	16	18	-50	2.94E-8	1.86E-5	> 1.00E-4
CNS Cancer															
SF-268	0.612	2.017	1.802	1.251	0.944	0.802	0.500	85	45	24	13	-18	7.66E-8	2.66E-5	> 1.00E-4
SF-295	0.899	2.634	1.516	0.666	0.697	0.812	0.387	36	-26	-23	-10	-57	< 1.00E-8	3.79E-8	7.11E-5
SF-539	0.979	2.713	2.301	0.416	0.480	0.570	0.159	76	-58	-51	-42	-84	1.57E-8	3.72E-8	.
SNB-19	0.755	2.181	2.053	1.400	1.395	1.387	0.643	91	45	45	44	-15	7.87E-8	5.61E-5	> 1.00E-4
SNB-75	0.959	1.826	1.608	0.981	1.182	1.233	0.687	75	2	26	32	-28	2.20E-8	3.36E-5	> 1.00E-4
U251	0.585	1.971	1.823	0.630	0.542	0.458	0.104	89	3	-7	-22	-82	2.86E-8	2.03E-7	2.93E-5
Melanoma															
LOX IMVI	0.658	2.903	2.752	1.889	1.202	1.145	0.402	93	55	24	22	-39	1.44E-7	2.28E-5	> 1.00E-4
M14	0.546	1.849	1.472	0.396	0.426	0.630	0.134	71	-28	-22	6	-76	1.63E-8	.	4.88E-5
MDA-MB-435	0.544	2.241	0.557	0.223	0.290	0.425	0.049	1	-59	-47	-22	-91	< 1.00E-8	1.03E-8	.
SK-MEL-2	0.753	1.244	1.187	0.681	0.710	0.774	0.280	88	-10	-6	4	-63	2.47E-8	.	6.43E-5
SK-MEL-28	0.592	1.530	1.226	0.968	1.049	1.096	0.257	68	40	49	54	-57	.	3.07E-5	8.71E-5
SK-MEL-5	0.929	2.981	2.344	1.228	0.628	0.352	0.028	69	15	-32	-62	-97	2.23E-8	2.04E-7	3.90E-6
UACC-257	0.905	1.653	1.332	1.153	1.172	1.180	0.385	57	33	36	37	-57	1.97E-8	2.46E-5	8.33E-5
UACC-62	0.902	2.777	2.219	1.606	1.544	1.456	0.154	70	38	34	30	-83	4.15E-8	1.83E-5	5.09E-5
Ovarian Cancer															
IGROV1	0.486	1.625	1.214	0.848	0.715	0.631	0.288	64	32	20	13	-41	2.71E-8	1.73E-5	> 1.00E-4
OVCAR-3	0.705	1.877	1.692	0.490	0.399	0.435	0.414	84	-30	-43	-38	-41	1.99E-8	5.42E-8	> 1.00E-4
OVCAR-4	0.559	1.105	1.071	0.885	0.875	0.813	0.508	94	60	58	46	-9	4.88E-6	6.85E-5	> 1.00E-4
OVCAR-5	0.593	1.386	1.210	0.783	0.759	0.750	0.428	78	24	21	20	-28	3.28E-8	2.60E-5	> 1.00E-4
OVCAR-8	0.588	2.077	1.958	0.819	0.608	0.661	0.458	92	16	1	5	-22	3.54E-8	1.51E-5	> 1.00E-4
NCI/ADR-RES	0.543	1.829	1.393	0.523	0.484	0.603	0.439	66	-4	-11	5	-19	1.70E-8	.	> 1.00E-4
SK-OV-3	0.584	1.298	1.223	0.599	0.648	0.549	0.444	90	2	9	-6	-24	2.83E-8	3.98E-6	> 1.00E-4
Renal Cancer															
786-0	0.584	2.404	2.232	1.257	0.823	0.637	0.342	91	37	13	3	-42	5.71E-8	1.16E-5	> 1.00E-4
A498	1.700	2.608	2.108	1.643	1.395	1.399	0.867	45	-3	-18	-18	-49	< 1.00E-8	8.52E-8	> 1.00E-4
ACHN	0.411	1.723	1.388	0.959	0.726	0.591	0.322	74	42	24	14	-22	5.59E-8	2.43E-5	> 1.00E-4
CAKI-1	0.648	2.451	1.688	1.181	1.045	0.897	0.393	58	30	22	14	-39	1.87E-8	1.82E-5	> 1.00E-4
RXF 393	0.948	1.975	1.777	0.991	1.168	1.218	0.676	81	4	21	26	-29	2.52E-8	3.00E-5	> 1.00E-4
SN12C	0.643	2.613	2.498	1.313	1.073	0.963	0.537	94	34	22	16	-16	5.42E-8	3.14E-5	> 1.00E-4
UO-31	0.655	1.732	1.437	1.055	0.978	0.764	0.272	73	37	30	10	-58	4.33E-8	1.40E-5	7.52E-5
Prostate Cancer															
PC-3	0.698	2.452	2.039	1.208	1.229	1.272	0.666	76	29	30	33	-5	3.62E-8	7.54E-5	> 1.00E-4
DU-145	0.460	1.642	1.652	0.641	0.445	0.482	0.320	101	15	-3	2	-31	3.93E-8	.	> 1.00E-4
Breast Cancer															
MCF7	0.419	2.246	1.807	0.640	0.602	0.520	0.287	76	12	10	6	-32	2.55E-8	1.41E-5	> 1.00E-4
MDA-MB-231/ATCC	0.681	1.487	1.551	0.913	0.592	0.826	0.449	108	29	-13	18	-34	5.39E-8	.	> 1.00E-4
HS 578T	1.268	2.221	1.971	1.404	1.378	1.337	0.921	74	14	12	7	-27	2.51E-8	1.61E-5	> 1.00E-4
BT-549	1.240	2.279	2.249	1.956	1.223	1.322	0.638	97	69	-1	8	-49	1.86E-7	.	> 1.00E-4
MDA-MB-468	0.767	1.781	1.594	1.001	0.991	0.933	0.654	81	23	22	16	-15	3.46E-8	3.36E-5	> 1.00E-4

Mean Graphs

Report Date :December 09, 2013

Test Date :April 08, 2013

