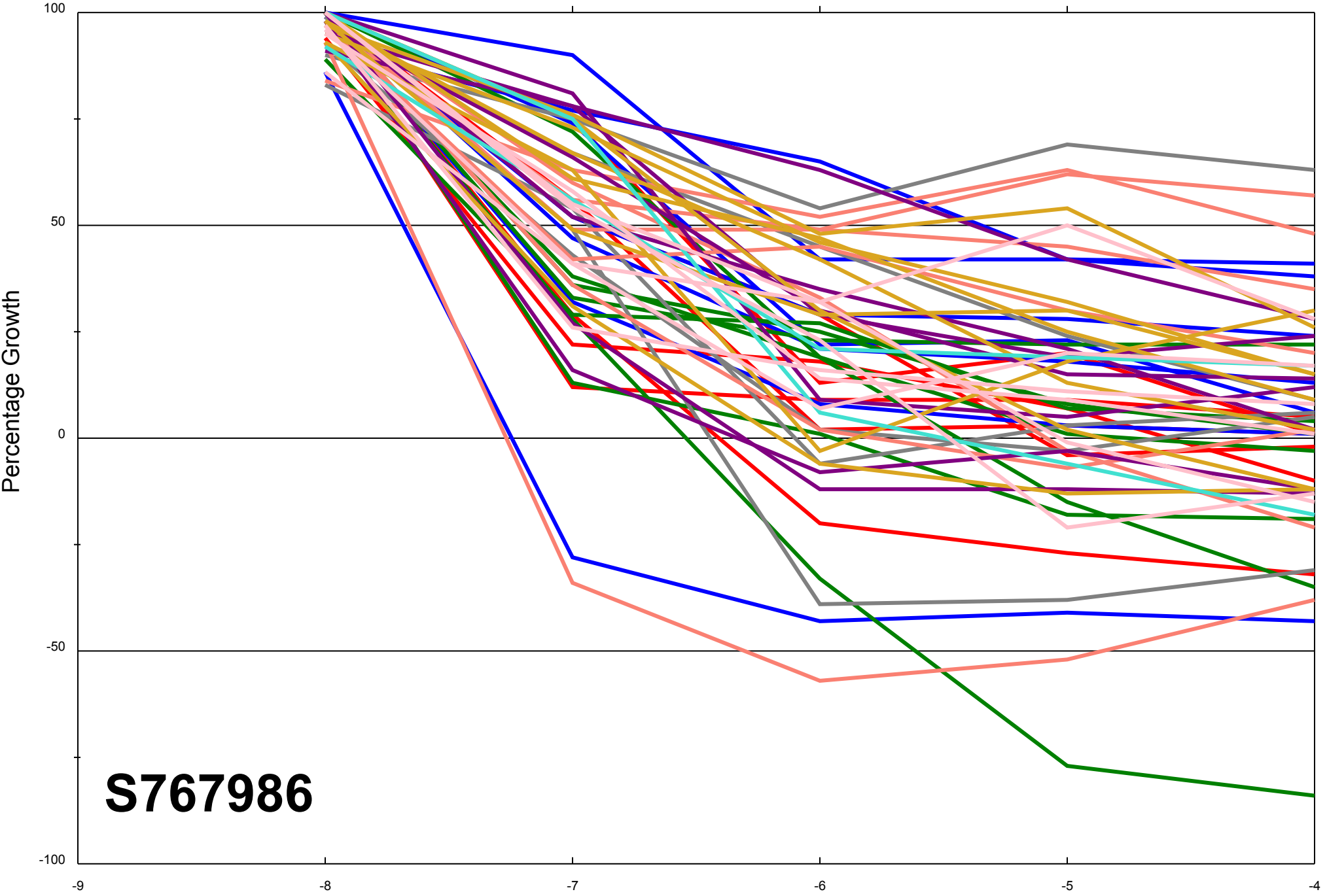


Dose Response Curves

Report Date:November 13, 2013

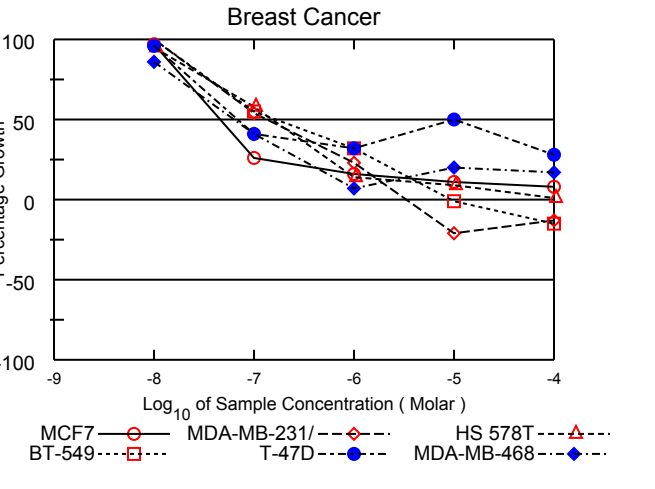
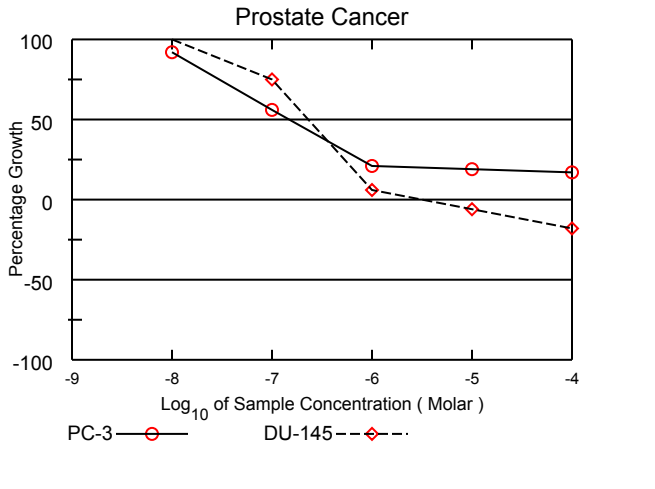
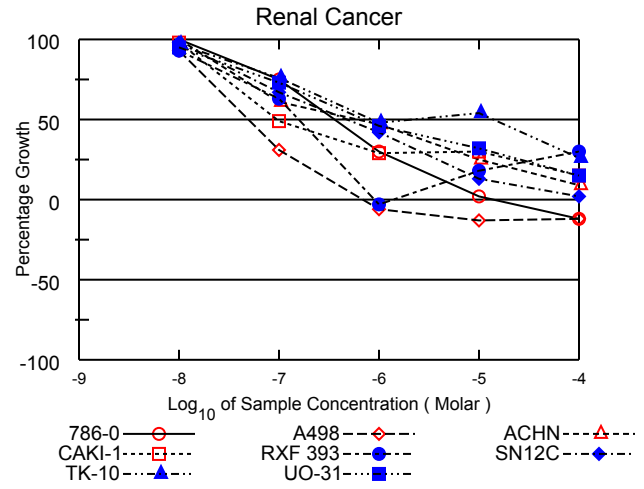
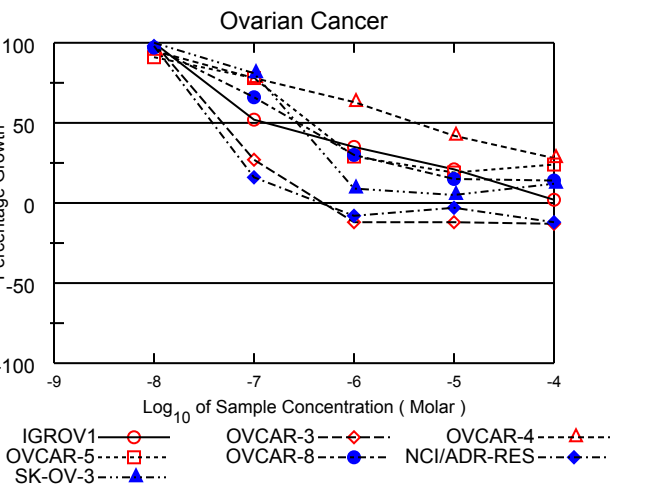
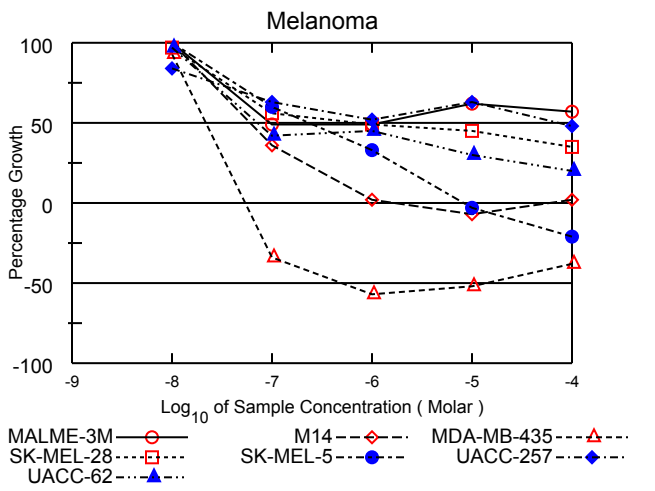
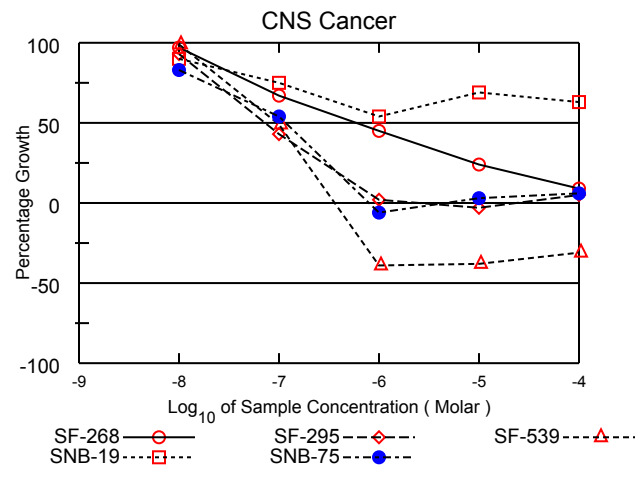
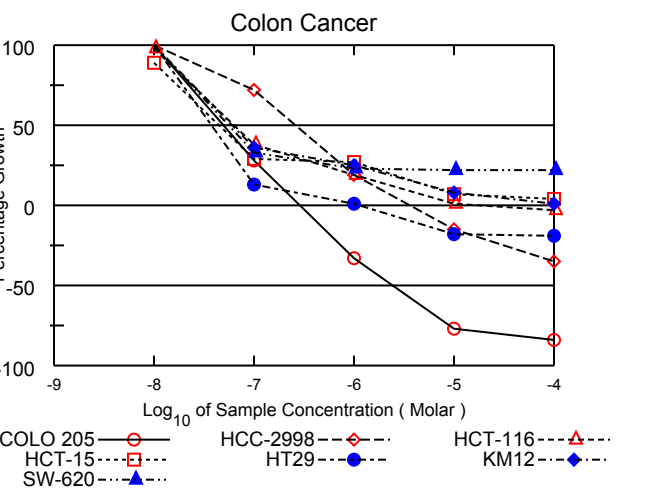
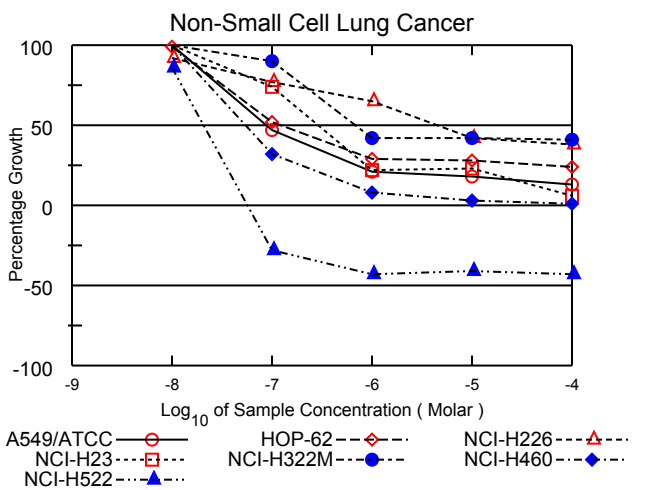
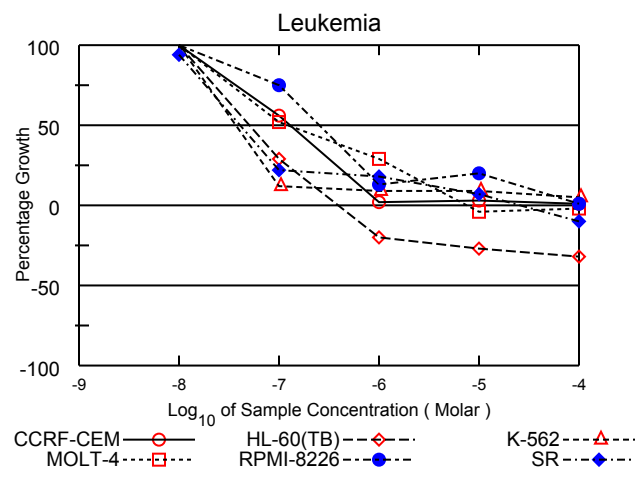
Test Date:March 11, 2013

All Cell Lines



S767986

Log₁₀ of Sample Concentration (Molar)



National Cancer Institute Developmental Therapeutics Program In-Vitro Testing Results

NSC : 767986 / 1	Experiment ID : 1303NS37	Test Type : 08	Units : Molar
Report Date : November 13, 2013	Test Date : March 11, 2013	QNS :	MC :
COMI : NMR/22210176 (122335)	Stain Reagent : SRB Dual-Pass Related	SSPL : 0YAR	

Panel/Cell Line	Log10 Concentration												GI50	TGI	LC50
	Time Zero	Ctrl	-8.0	-7.0	-6.0	-5.0	-4.0	-8.0	-7.0	-6.0	-5.0	-4.0			
Leukemia															
CCRF-CEM	0.402	1.571	1.599	1.063	0.425	0.437	0.408	102	56	2	3	1	1.32E-7	> 1.00E-4	> 1.00E-4
HL-60(TB)	1.031	3.154	3.159	1.649	0.825	0.751	0.698	100	29	-20	-27	-32	5.08E-8	3.92E-7	> 1.00E-4
K-562	0.366	2.434	2.616	0.623	0.552	0.554	0.473	109	12	9	9	5	4.07E-8	> 1.00E-4	> 1.00E-4
MOLT-4	1.017	2.854	2.955	1.972	1.542	0.973	0.994	105	52	29	-4	-2	1.22E-7	7.39E-6	> 1.00E-4
RPMI-8226	1.220	3.083	3.097	2.622	1.456	1.591	1.248	101	75	13	20	1	2.53E-7	> 1.00E-4	> 1.00E-4
SR	0.675	2.608	2.500	1.103	1.027	0.817	0.609	94	22	18	7	-10	4.12E-8	2.67E-5	> 1.00E-4
Non-Small Cell Lung Cancer															
A549/ATCC	0.376	1.927	1.928	1.106	0.698	0.656	0.574	100	47	21	18	13	8.79E-8	> 1.00E-4	> 1.00E-4
HOP-62	0.394	1.128	1.120	0.778	0.607	0.597	0.573	99	52	29	28	24	1.25E-7	> 1.00E-4	> 1.00E-4
NCI-H226	1.075	2.652	2.526	2.282	2.104	1.745	1.675	92	77	65	42	38	4.67E-6	> 1.00E-4	> 1.00E-4
NCI-H23	0.853	2.155	2.155	1.822	1.141	1.154	0.928	100	74	22	23	6	2.93E-7	> 1.00E-4	> 1.00E-4
NCI-H322M	0.800	1.759	1.762	1.665	1.200	1.202	1.194	100	90	42	42	41	6.73E-7	> 1.00E-4	> 1.00E-4
NCI-H460	0.220	2.135	2.187	0.825	0.378	0.277	0.235	103	32	8	3	1	5.51E-8	> 1.00E-4	> 1.00E-4
NCI-H522	1.032	2.232	2.068	0.745	0.590	0.612	0.589	86	-28	-43	-41	-43	2.08E-8	5.70E-8	> 1.00E-4
Colon Cancer															
COLO 205	0.616	2.275	2.428	1.073	0.410	0.145	0.101	109	28	-33	-77	-84	5.31E-8	2.83E-7	2.42E-6
HCC-2998	1.089	2.704	2.806	2.246	1.397	0.925	0.711	106	72	19	-15	-35	2.58E-7	3.61E-6	> 1.00E-4
HCT-116	0.235	1.676	1.654	0.788	0.507	0.249	0.229	98	38	19	1	-3	6.40E-8	1.79E-5	> 1.00E-4
HCT-15	0.325	2.044	1.849	0.825	0.781	0.438	0.392	89	29	27	7	4	4.45E-8	> 1.00E-4	> 1.00E-4
HT29	0.259	1.497	1.580	0.417	0.276	0.213	0.211	107	13	1	-18	-19	4.02E-8	1.17E-6	> 1.00E-4
KM12	0.498	2.137	2.141	1.080	0.910	0.635	0.519	100	36	25	8	1	5.97E-8	> 1.00E-4	> 1.00E-4
SW-620	0.357	2.240	2.236	0.986	0.796	0.780	0.780	100	33	23	22	22	5.62E-8	> 1.00E-4	> 1.00E-4
CNS Cancer															
SF-268	0.551	1.693	1.660	1.322	1.068	0.826	0.659	97	67	45	24	9	6.11E-7	> 1.00E-4	> 1.00E-4
SF-295	1.121	3.041	2.903	1.954	1.160	1.086	1.217	93	43	2	-3	5	7.34E-8	.	> 1.00E-4
SF-539	0.846	2.327	2.314	1.570	0.513	0.522	0.583	99	49	-39	-38	-31	9.49E-8	3.58E-7	> 1.00E-4
SNB-19	1.249	2.375	2.265	2.099	1.855	2.031	1.962	90	75	54	69	63	> 1.00E-4	> 1.00E-4	> 1.00E-4
SNB-75	0.760	1.538	1.404	1.184	0.713	0.787	0.806	83	54	-6	3	6	1.19E-7	.	> 1.00E-4
Melanoma															
MALME-3M	0.807	1.624	1.657	1.209	1.208	1.311	1.272	104	49	49	62	57	.	> 1.00E-4	> 1.00E-4
M14	0.449	1.488	1.489	0.828	0.474	0.418	0.466	100	36	2	-7	2	6.13E-8	.	> 1.00E-4
MDA-MB-435	0.563	2.111	1.997	0.373	0.244	0.271	0.350	93	-34	-57	-52	-38	2.17E-8	5.40E-8	.
SK-MEL-28	0.493	1.513	1.481	1.066	0.993	0.954	0.853	97	56	49	45	35	7.25E-7	> 1.00E-4	> 1.00E-4
SK-MEL-5	1.002	3.361	3.365	2.421	1.776	0.974	0.793	100	60	33	-3	-21	2.35E-7	8.35E-6	> 1.00E-4
UACC-257	0.860	1.856	1.699	1.484	1.381	1.491	1.339	84	63	52	63	48	7.49E-5	> 1.00E-4	> 1.00E-4
UACC-62	0.834	2.482	2.436	1.530	1.576	1.334	1.167	97	42	45	30	20	7.22E-8	> 1.00E-4	> 1.00E-4
Ovarian Cancer															
IGROV1	0.563	1.688	1.769	1.143	0.952	0.800	0.584	107	52	35	21	2	1.23E-7	> 1.00E-4	> 1.00E-4
OVCAR-3	0.478	1.344	1.417	0.716	0.423	0.423	0.417	108	27	-12	-12	-13	5.26E-8	5.06E-7	> 1.00E-4
OVCAR-4	0.716	1.313	1.281	1.180	1.092	0.967	0.886	95	78	63	42	28	4.17E-6	> 1.00E-4	> 1.00E-4
OVCAR-5	0.545	1.364	1.287	1.185	0.783	0.704	0.742	91	78	29	19	24	3.74E-7	> 1.00E-4	> 1.00E-4
OVCAR-8	0.550	2.054	2.012	1.550	1.004	0.779	0.761	97	66	30	15	14	2.84E-7	> 1.00E-4	> 1.00E-4
NCI/ADR-RES	0.625	1.847	1.817	0.820	0.573	0.609	0.553	98	16	-8	-3	-12	3.82E-8	4.52E-7	> 1.00E-4
SK-OV-3	0.579	1.162	1.170	1.054	0.631	0.610	0.646	101	81	9	5	12	2.71E-7	> 1.00E-4	> 1.00E-4
Renal Cancer															
786-0	0.659	2.269	2.336	1.872	1.144	0.687	0.581	104	75	30	2	-12	3.63E-7	1.34E-5	> 1.00E-4
A498	1.311	1.944	1.900	1.505	1.230	1.143	1.157	93	31	-6	-13	-12	4.90E-8	6.80E-7	> 1.00E-4
ACHN	0.374	1.523	1.519	1.077	0.913	0.657	0.478	100	61	47	25	9	6.07E-7	> 1.00E-4	> 1.00E-4
CAKI-1	0.823	2.783	2.740	1.793	1.397	1.407	1.114	98	49	29	30	15	9.76E-8	> 1.00E-4	> 1.00E-4
RXF 393	0.796	1.315	1.280	1.124	0.769	0.889	0.953	93	63	-3	18	30	1.57E-7	.	> 1.00E-4
SN12C	0.735	2.472	2.429	1.892	1.472	0.969	0.776	98	67	42	13	2	4.86E-7	> 1.00E-4	> 1.00E-4
TK-10	0.846	1.642	1.617	1.452	1.231	1.278	1.052	97	76	48	54	26	.	> 1.00E-4	> 1.00E-4
UO-31	0.543	1.700	1.647	1.386	1.071	0.908	0.717	95	73	46	32	15	6.92E-7	> 1.00E-4	> 1.00E-4
Prostate Cancer															
PC-3	0.470	1.317	1.251	0.946	0.648	0.629	0.618	92	56	21	19	17	1.50E-7	> 1.00E-4	> 1.00E-4
DU-145	0.404	1.416	1.488	1.168	0.462	0.379	0.330	107	75	6	-6	-18	2.32E-7	2.99E-6	> 1.00E-4
Breast Cancer															
MCF7	0.170	1.091	1.067	0.413	0.315	0.271	0.244	97	26	16	11	8	4.65E-8	> 1.00E-4	> 1.00E-4
MDA-MB-231/ATCC	0.651	1.395	1.424	1.054	0.819	0.515	0.567	104	54	23	-21	-13	1.35E-7	3.30E-6	> 1.00E-4
HS 578T	1.254	2.124	2.081	1.761	1.378	1.331	1.261	95	58	14	9	1	1.54E-7	> 1.00E-4	> 1.00E-4
BT-549	0.991	1.913	1.947	1.494	1.287	0.985	0.840	104	55	32	-1	-15	1.60E-7	9.58E-6	> 1.00E-4
T-47D	0.577	1.405	1.372	0.921	0.838	0.995	0.806	96	41	32	50	28	.	> 1.00E-4	> 1.00E-4
MDA-MB-468	0.802	1.626	1.510	1.136	0.856	0.966	0.940	86	41	7	20	17	6.18E-8	> 1.00E-4	> 1.00E-4

Mean Graphs

Report Date :November 13, 2013

Test Date :March 11, 2013

