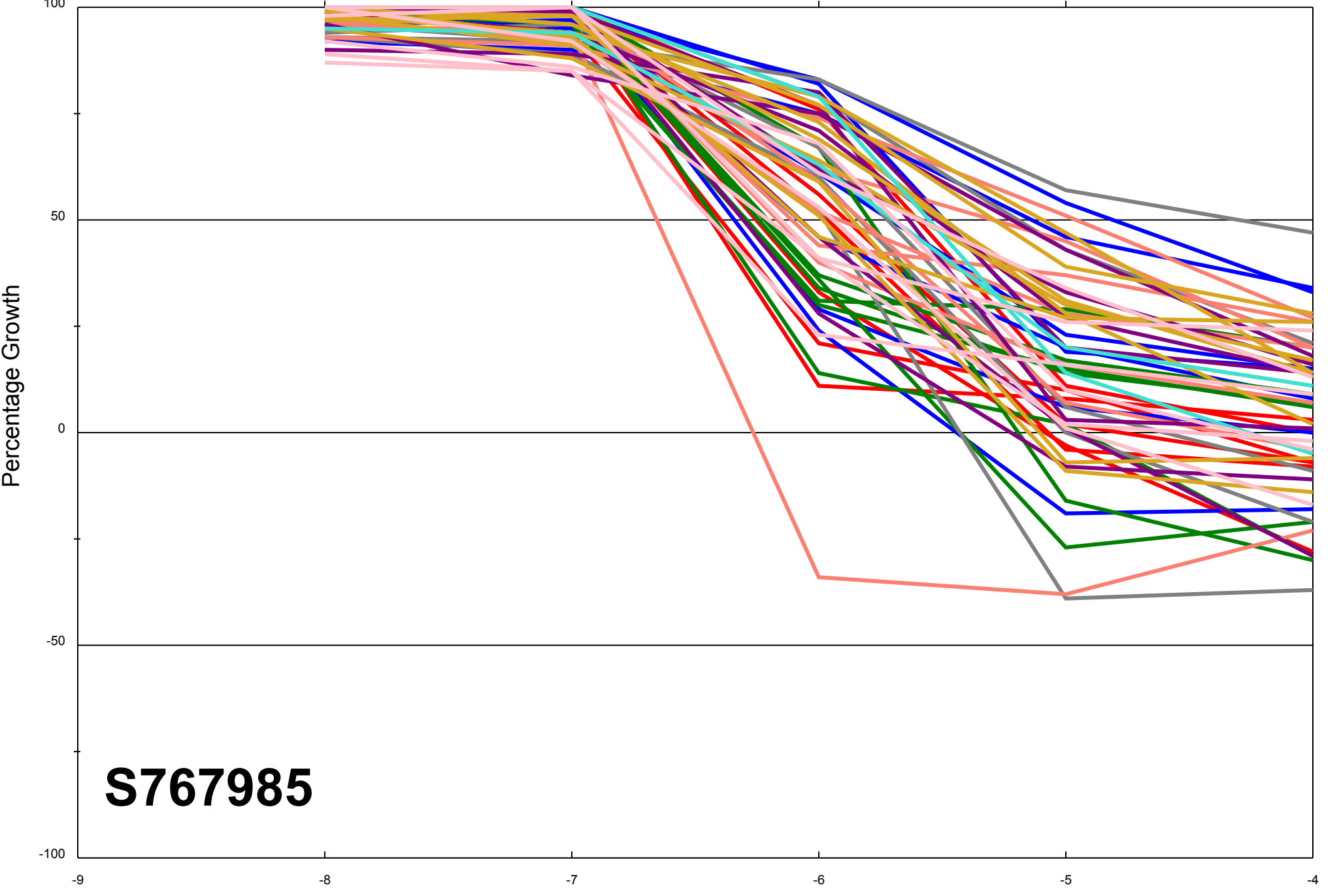


Dose Response Curves

Report Date: June 13, 2013

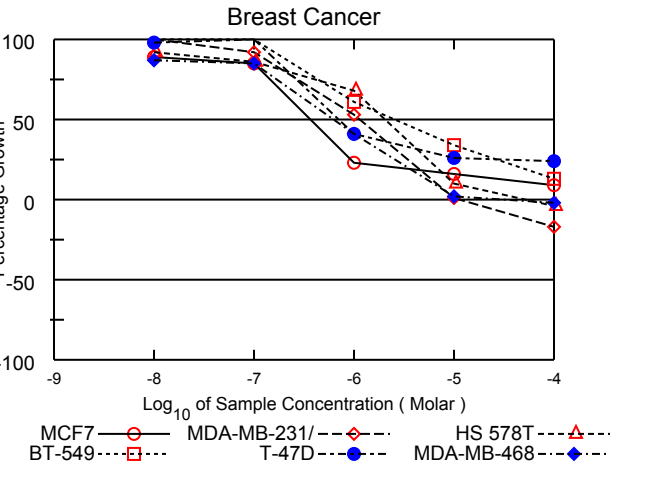
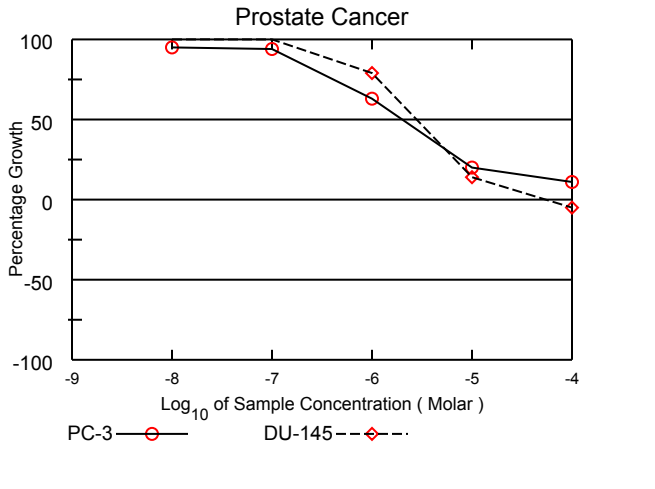
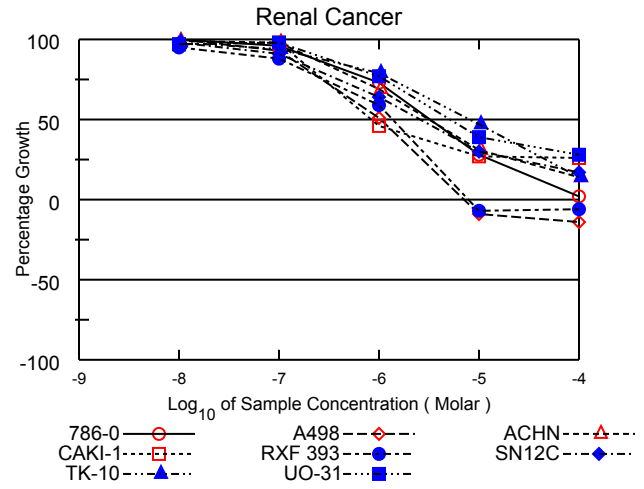
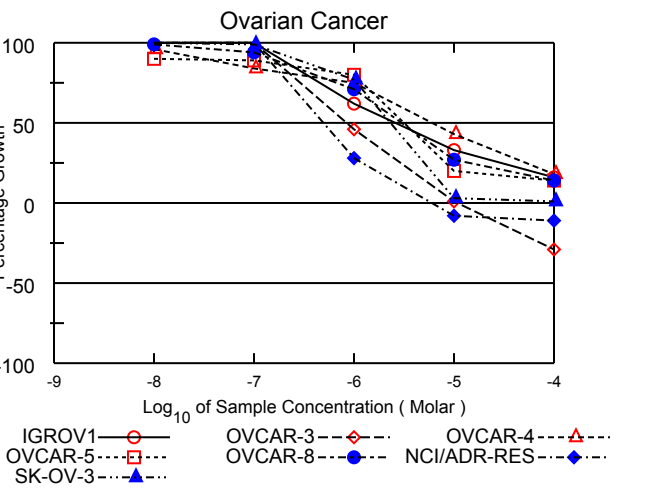
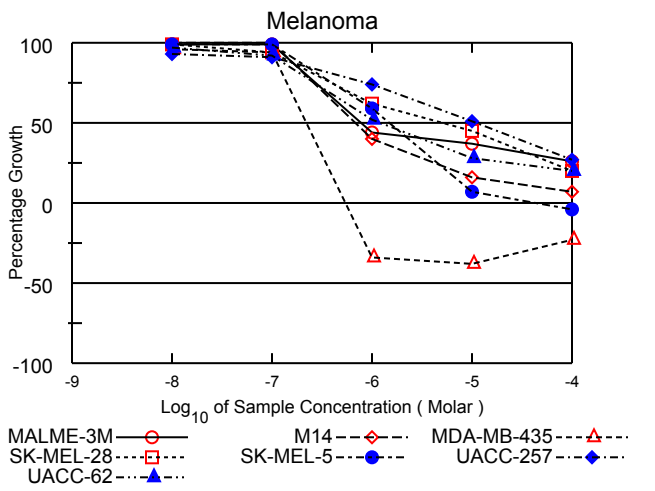
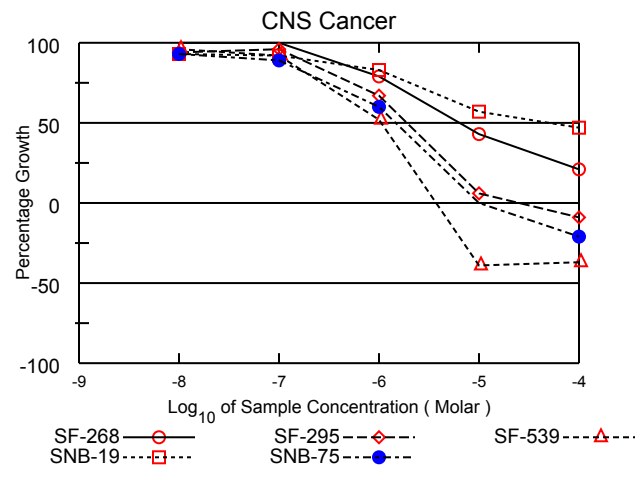
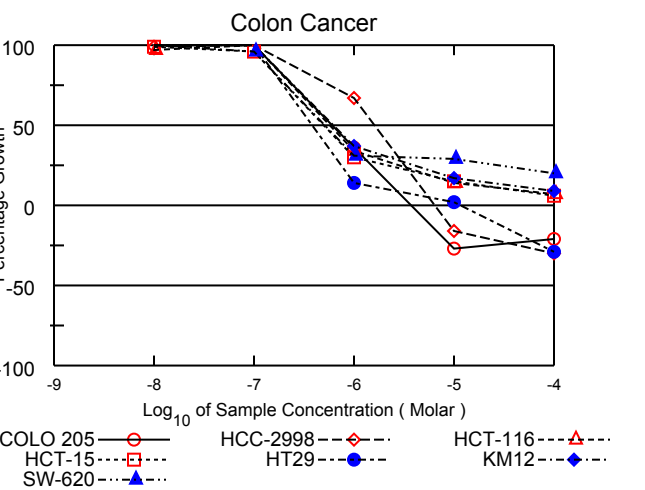
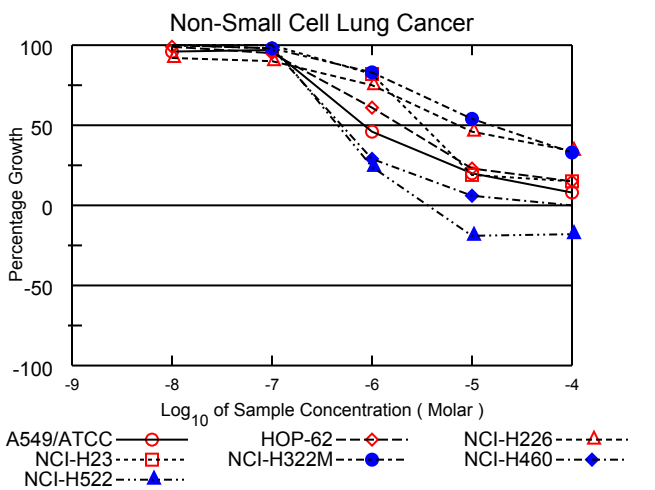
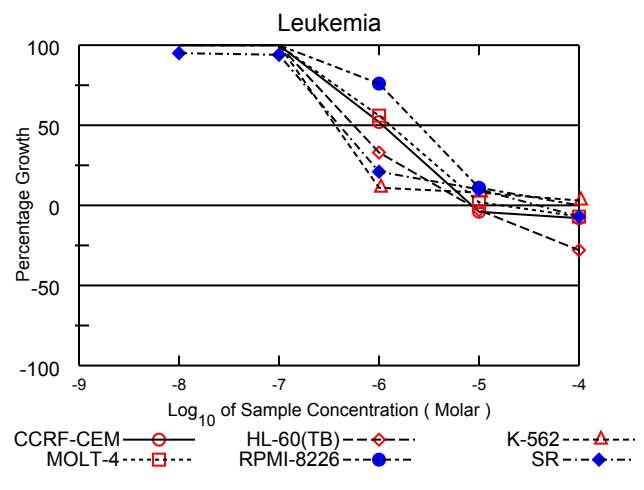
Test Date: March 11, 2013

All Cell Lines



**S767985**

Log<sub>10</sub> of Sample Concentration (Molar)



# National Cancer Institute Developmental Therapeutics Program In-Vitro Testing Results

NSC : 767985 / 1	Experiment ID : 1303NS37	Test Type : 08	Units : Molar
Report Date : June 13, 2013	Test Date : March 11, 2013	QNS :	MC :
COMI : A4550/0194743 (122334)	Stain Reagent : SRB Dual-Pass Related	SSPL : 0YAR	

Panel/Cell Line	Log10 Concentration												GI50	TGI	LC50
	Time Zero	Ctrl	-8.0	-7.0	-6.0	-5.0	-4.0	-8.0	-7.0	-6.0	-5.0	-4.0			
<b>Leukemia</b>															
CCRF-CEM	0.402	1.449	1.487	1.471	0.949	0.386	0.370	104	102	52	-4	-8	1.09E-6	8.49E-6	> 1.00E-4
HL-60(TB)	1.031	3.090	3.100	3.182	1.712	1.002	0.747	100	104	33	-3	-28	5.79E-7	8.32E-6	> 1.00E-4
K-562	0.366	2.263	2.571	2.466	0.580	0.518	0.421	116	111	11	8	3	4.08E-7	> 1.00E-4	> 1.00E-4
MOLT-4	1.017	2.799	2.916	2.940	2.013	1.062	0.949	107	108	56	2	-7	1.29E-6	1.87E-5	> 1.00E-4
RPMI-8226	1.220	2.905	2.980	2.937	2.499	1.409	1.227	104	102	76	11	.	2.51E-6	> 1.00E-4	> 1.00E-4
SR	0.675	2.562	2.470	2.443	1.077	0.870	0.628	95	94	21	10	-7	4.01E-7	3.93E-5	> 1.00E-4
<b>Non-Small Cell Lung Cancer</b>															
A549/ATCC	0.376	2.013	1.951	1.961	1.132	0.696	0.513	96	97	46	20	8	8.41E-7	> 1.00E-4	> 1.00E-4
HOP-62	0.394	1.111	1.107	1.073	0.829	0.560	0.503	99	95	61	23	15	1.92E-6	> 1.00E-4	> 1.00E-4
NCI-H226	1.075	2.614	2.492	2.466	2.233	1.783	1.594	92	90	75	46	34	7.28E-6	> 1.00E-4	> 1.00E-4
NCI-H23	0.853	2.128	2.205	2.227	1.899	1.090	1.040	106	108	82	19	15	3.20E-6	> 1.00E-4	> 1.00E-4
NCI-H322M	0.800	1.707	1.725	1.688	1.555	1.292	1.099	102	98	83	54	33	1.58E-5	> 1.00E-4	> 1.00E-4
NCI-H460	0.220	2.240	2.261	2.200	0.809	0.337	0.222	101	98	29	6	.	4.98E-7	> 1.00E-4	> 1.00E-4
NCI-H522	1.032	2.202	2.247	2.225	1.314	0.831	0.842	104	102	24	-19	-18	4.64E-7	3.57E-6	> 1.00E-4
<b>Colon Cancer</b>															
COLO 205	0.616	2.417	2.592	2.496	1.268	0.448	0.486	110	104	36	-27	-21	6.27E-7	3.72E-6	> 1.00E-4
HCC-2998	1.089	2.719	2.702	2.786	2.182	0.911	0.757	99	104	67	-16	-30	1.60E-6	6.37E-6	> 1.00E-4
HCT-116	0.235	1.693	1.649	1.701	0.730	0.440	0.336	97	101	34	14	7	5.74E-7	> 1.00E-4	> 1.00E-4
HCT-15	0.325	1.953	1.934	1.884	0.809	0.576	0.430	99	96	30	15	6	4.93E-7	> 1.00E-4	> 1.00E-4
HT29	0.259	1.530	1.528	1.630	0.439	0.280	0.184	100	108	14	2	-29	4.14E-7	1.13E-5	> 1.00E-4
KM12	0.498	2.160	2.223	2.236	1.116	0.785	0.640	104	105	37	17	9	6.45E-7	> 1.00E-4	> 1.00E-4
SW-620	0.357	2.315	2.394	2.234	0.972	0.930	0.744	104	96	31	29	20	5.14E-7	> 1.00E-4	> 1.00E-4
<b>CNS Cancer</b>															
SF-268	0.551	1.756	1.750	1.760	1.498	1.072	0.801	100	100	79	43	21	6.44E-6	> 1.00E-4	> 1.00E-4
SF-295	1.121	3.083	2.967	3.010	2.440	1.243	1.023	94	96	67	6	-9	1.92E-6	2.59E-5	> 1.00E-4
SF-539	0.846	2.363	2.307	2.235	1.633	0.513	0.536	96	92	52	-39	-37	1.05E-6	3.70E-6	> 1.00E-4
SNB-19	1.249	2.358	2.281	2.268	2.165	1.884	1.767	93	92	83	57	47	4.87E-5	> 1.00E-4	> 1.00E-4
SNB-75	0.760	1.508	1.453	1.422	1.212	0.760	0.599	93	89	60	.	-21	1.49E-6	9.97E-6	> 1.00E-4
<b>Melanoma</b>															
MALME-3M	0.807	1.585	1.577	1.575	1.148	1.097	1.009	99	99	44	37	26	7.70E-7	> 1.00E-4	> 1.00E-4
M14	0.449	1.484	1.576	1.577	0.862	0.620	0.522	109	109	40	16	7	7.15E-7	> 1.00E-4	> 1.00E-4
MDA-MB-435	0.563	2.199	2.131	2.093	0.370	0.348	0.434	96	94	-34	-38	-23	2.19E-7	5.39E-7	> 1.00E-4
SK-MEL-28	0.493	1.516	1.503	1.451	1.128	0.957	0.701	99	94	62	45	20	5.28E-6	> 1.00E-4	> 1.00E-4
SK-MEL-5	1.002	3.420	3.392	3.405	2.419	1.167	0.961	99	99	59	7	-4	1.46E-6	4.22E-5	> 1.00E-4
UACC-257	0.860	1.930	1.860	1.834	1.648	1.403	1.151	93	91	74	51	27	1.08E-5	> 1.00E-4	> 1.00E-4
UACC-62	0.834	2.530	2.477	2.387	1.716	1.310	1.174	97	92	52	28	20	1.21E-6	> 1.00E-4	> 1.00E-4
<b>Ovarian Cancer</b>															
IGROV1	0.563	1.628	1.728	1.742	1.225	0.915	0.730	109	111	62	33	16	2.61E-6	> 1.00E-4	> 1.00E-4
OVCAR-3	0.478	1.426	1.508	1.521	0.917	0.483	0.338	109	110	46	1	-29	8.74E-7	1.04E-5	> 1.00E-4
OVCAR-4	0.716	1.294	1.269	1.204	1.151	0.964	0.822	96	84	75	43	18	6.03E-6	> 1.00E-4	> 1.00E-4
OVCAR-5	0.545	1.362	1.282	1.273	1.201	0.710	0.657	90	89	80	20	14	3.19E-6	> 1.00E-4	> 1.00E-4
OVCAR-8	0.550	2.159	2.147	2.065	1.696	0.988	0.774	99	94	71	27	14	3.04E-6	> 1.00E-4	> 1.00E-4
NCI/ADR-RES	0.625	1.876	1.935	1.965	0.972	0.578	0.557	105	107	28	-8	-11	5.24E-7	6.12E-6	> 1.00E-4
SK-OV-3	0.579	1.184	1.228	1.179	1.045	0.600	0.588	107	99	77	3	1	2.33E-6	> 1.00E-4	> 1.00E-4
<b>Renal Cancer</b>															
786-0	0.659	2.381	2.373	2.312	1.919	1.138	0.690	100	96	73	28	2	3.24E-6	> 1.00E-4	> 1.00E-4
A498	1.311	1.974	2.001	1.931	1.652	1.191	1.130	104	93	51	-9	-14	1.05E-6	7.05E-6	> 1.00E-4
ACHN	0.374	1.551	1.544	1.522	1.186	0.737	0.534	99	98	69	31	14	3.14E-6	> 1.00E-4	> 1.00E-4
CAKI-1	0.823	2.802	2.738	2.754	1.743	1.350	1.338	97	98	46	27	26	8.52E-7	> 1.00E-4	> 1.00E-4
RXF 393	0.796	1.335	1.311	1.273	1.116	0.742	0.745	95	88	59	-7	-6	1.38E-6	7.88E-6	> 1.00E-4
SN12C	0.735	2.481	2.445	2.325	1.844	1.264	1.038	98	91	64	30	17	2.55E-6	> 1.00E-4	> 1.00E-4
TK-10	0.846	1.695	1.677	1.643	1.518	1.248	0.969	98	94	79	47	14	8.25E-6	> 1.00E-4	> 1.00E-4
UO-31	0.543	1.672	1.643	1.646	1.408	0.983	0.865	97	98	77	39	28	5.09E-6	> 1.00E-4	> 1.00E-4
<b>Prostate Cancer</b>															
PC-3	0.470	1.345	1.299	1.292	1.021	0.649	0.570	95	94	63	20	11	2.01E-6	> 1.00E-4	> 1.00E-4
DU-145	0.404	1.441	1.516	1.523	1.220	0.550	0.383	107	108	79	14	-5	2.78E-6	5.31E-5	> 1.00E-4
<b>Breast Cancer</b>															
MCF7	0.170	1.085	0.984	0.946	0.383	0.321	0.253	89	85	23	16	9	3.67E-7	> 1.00E-4	> 1.00E-4
MDA-MB-231/ATCC	0.651	1.407	1.414	1.343	1.050	0.660	0.541	101	92	53	1	-17	1.13E-6	1.16E-5	> 1.00E-4
HS 578T	1.254	2.157	2.084	2.029	1.868	1.349	1.207	92	86	68	10	-4	2.06E-6	5.45E-5	> 1.00E-4
BT-549	0.991	1.943	2.009	1.995	1.573	1.311	1.112	107	105	61	34	13	2.54E-6	> 1.00E-4	> 1.00E-4
T-47D	0.577	1.425	1.412	1.444	0.929	0.795	0.782	98	102	41	26	24	7.24E-7	> 1.00E-4	> 1.00E-4
MDA-MB-468	0.802	1.659	1.544	1.531	1.149	0.816	0.784	87	85	41	2	-2	6.12E-7	2.59E-5	> 1.00E-4

Mean Graphs

Report Date :June 13, 2013

Test Date :March 11, 2013

