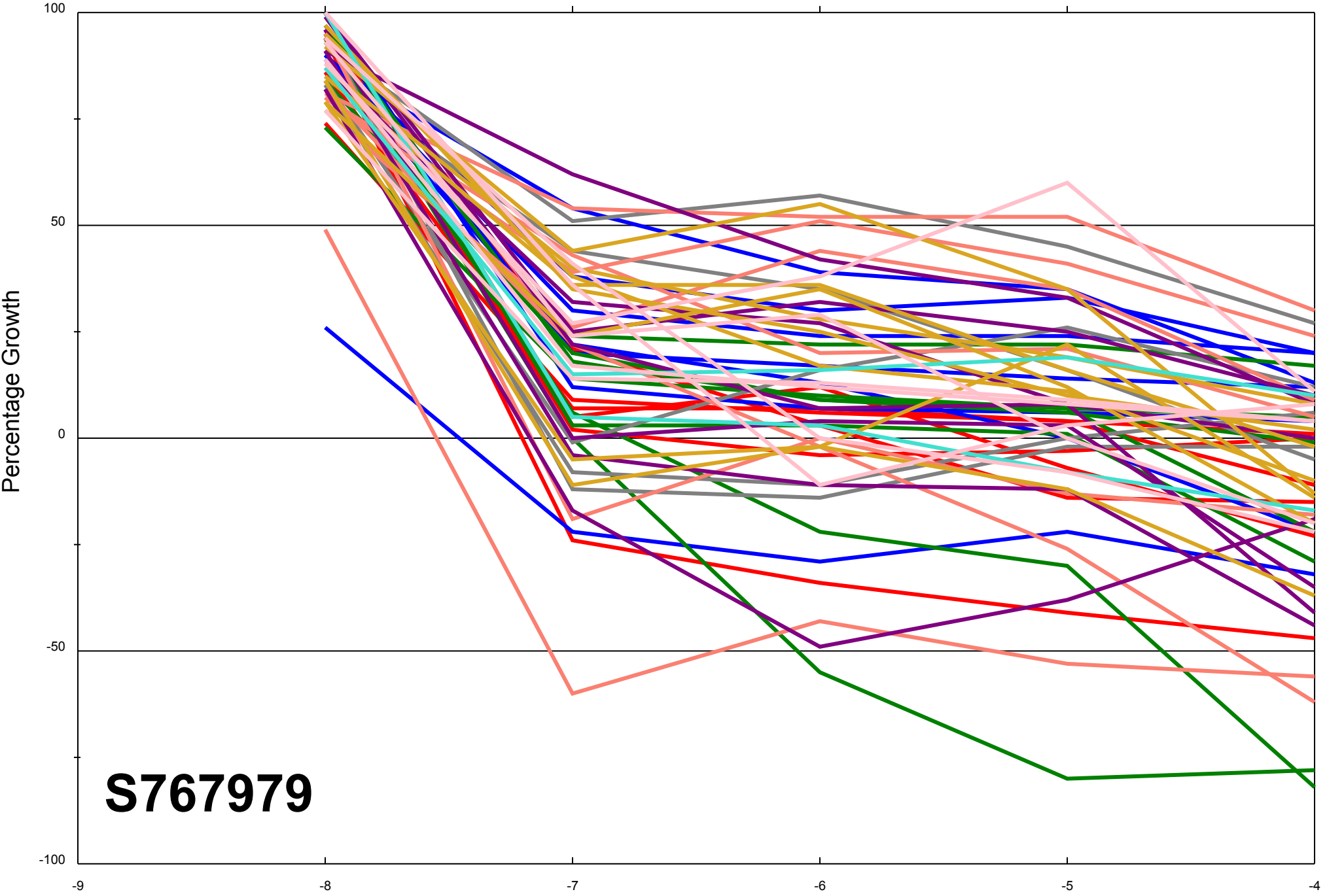
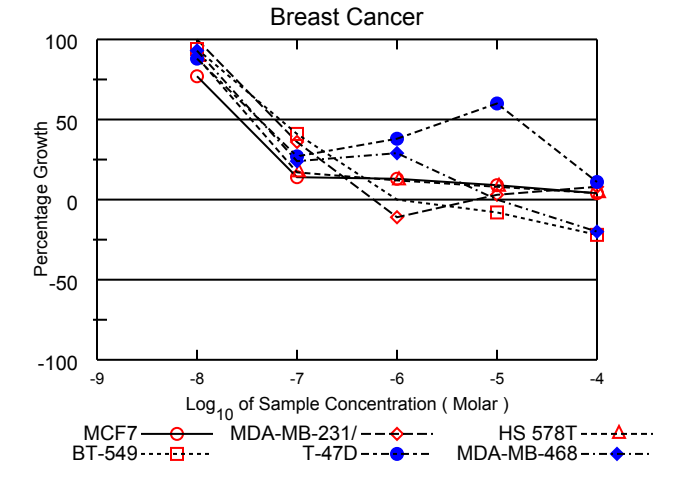
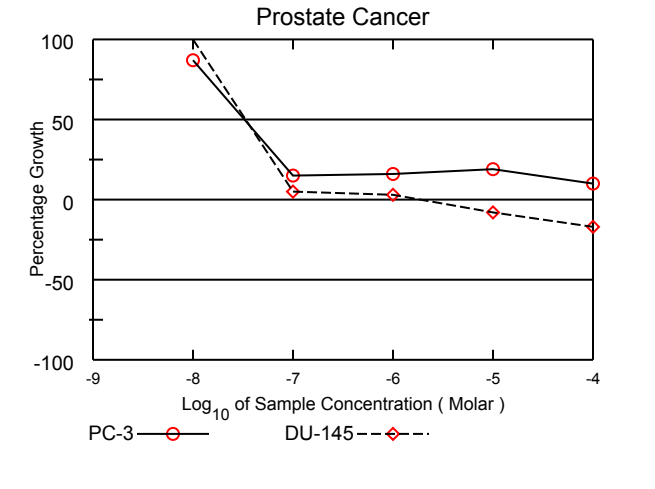
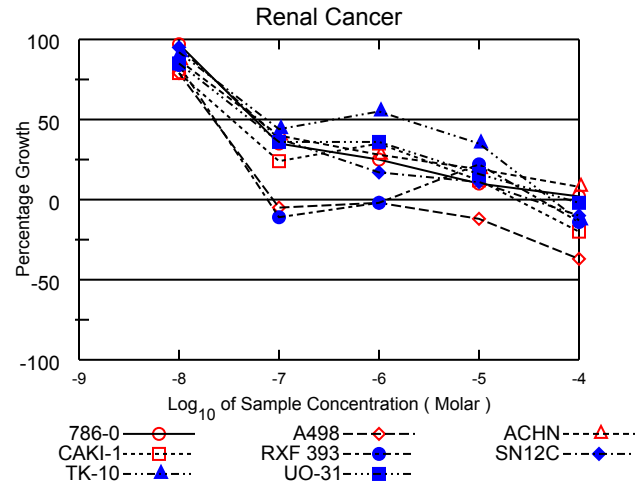
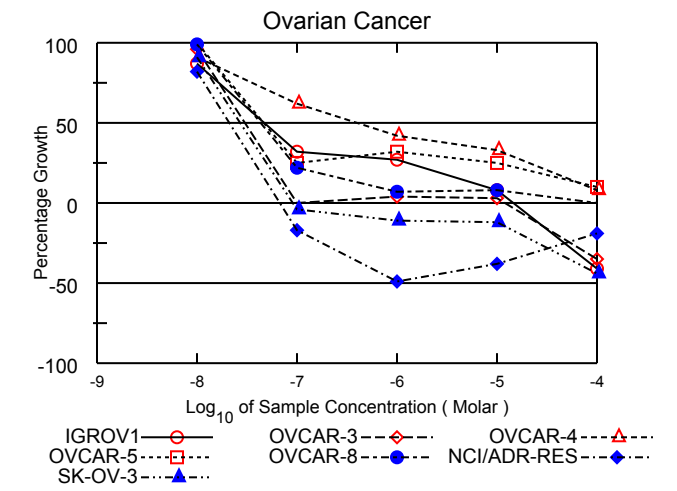
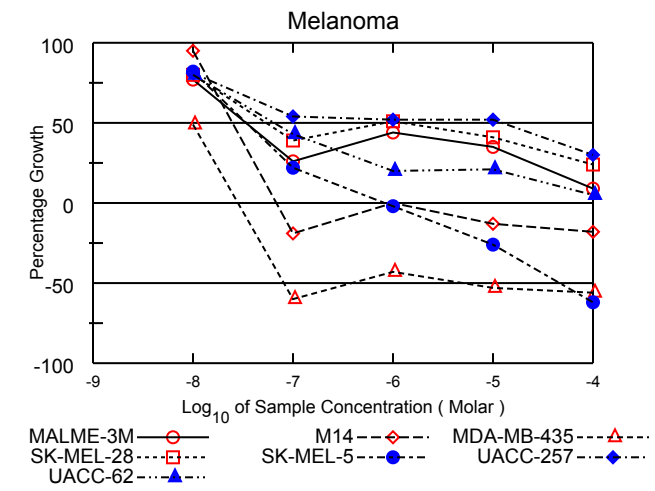
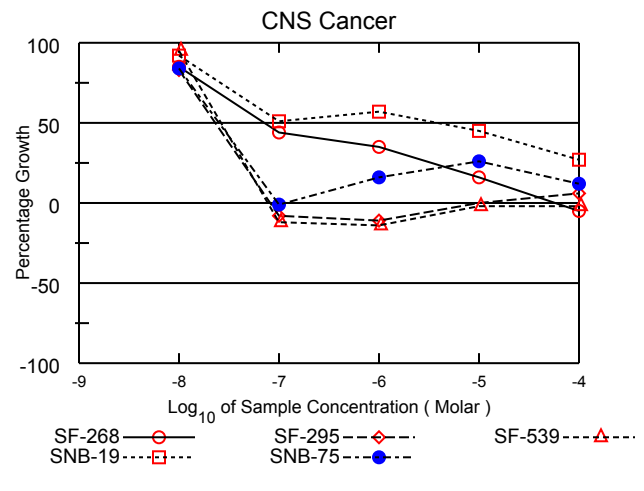
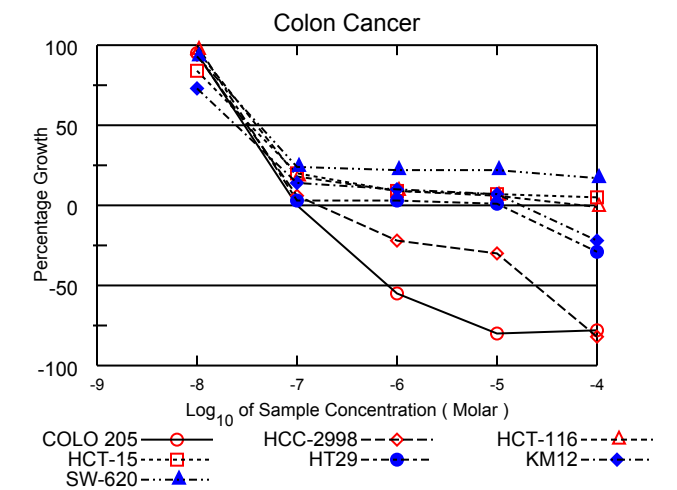
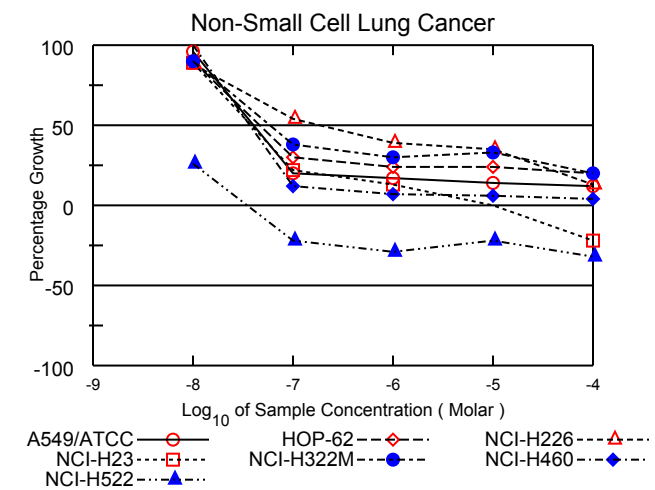
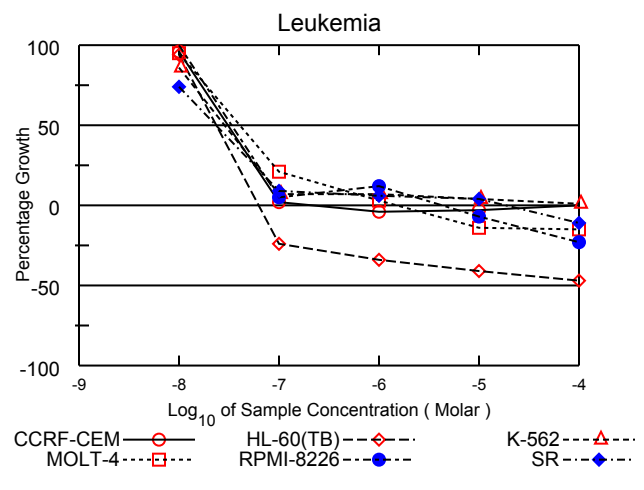


All Cell Lines



S767979

Log₁₀ of Sample Concentration (Molar)



National Cancer Institute Developmental Therapeutics Program In-Vitro Testing Results

| | | | |
|---------------------------------|---------------------------------------|----------------|---------------|
| NSC : 767979 / 1 | Experiment ID : 1303NS37 | Test Type : 08 | Units : Molar |
| Report Date : November 13, 2013 | Test Date : March 11, 2013 | QNS : | MC : |
| COMI : NMR/22257694 (122182) | Stain Reagent : SRB Dual-Pass Related | SSPL : 0YAR | |

| Panel/Cell Line | Log10 Concentration | | | | | | | | | | | | GI50 | TGI | LC50 |
|-----------------------------------|---------------------|-------|------------------------|-------|-------|-------|-------|------|----------------|------|------|------|-----------|-----------|-----------|
| | Time | | Mean Optical Densities | | | | | | Percent Growth | | | | | | |
| | Zero | Ctrl | -8.0 | -7.0 | -6.0 | -5.0 | -4.0 | -8.0 | -7.0 | -6.0 | -5.0 | -4.0 | | | |
| Leukemia | | | | | | | | | | | | | | | |
| CCRF-CEM | 0.402 | 1.462 | 1.420 | 0.420 | 0.387 | 0.389 | 0.401 | 96 | 2 | -4 | -3 | . | 3.08E-8 | 2.02E-7 | > 1.00E-4 |
| HL-60(TB) | 1.031 | 3.139 | 3.015 | 0.779 | 0.679 | 0.609 | 0.546 | 94 | -24 | -34 | -41 | -47 | 2.35E-8 | 6.22E-8 | > 1.00E-4 |
| K-562 | 0.366 | 2.329 | 2.064 | 0.511 | 0.501 | 0.445 | 0.384 | 86 | 7 | 7 | 4 | 1 | 2.89E-8 | > 1.00E-4 | > 1.00E-4 |
| MOLT-4 | 1.017 | 2.865 | 2.773 | 1.402 | 1.066 | 0.878 | 0.860 | 95 | 21 | 3 | -14 | -15 | 4.05E-8 | 1.45E-6 | > 1.00E-4 |
| RPMI-8226 | 1.220 | 2.917 | 2.911 | 1.307 | 1.421 | 1.140 | 0.940 | 100 | 5 | 12 | -7 | -23 | 3.35E-8 | 4.40E-6 | > 1.00E-4 |
| SR | 0.675 | 2.599 | 2.102 | 0.854 | 0.782 | 0.746 | 0.600 | 74 | 9 | 6 | 4 | -11 | 2.36E-8 | 1.77E-5 | > 1.00E-4 |
| Non-Small Cell Lung Cancer | | | | | | | | | | | | | | | |
| A549/ATCC | 0.376 | 1.948 | 1.879 | 0.694 | 0.637 | 0.596 | 0.562 | 96 | 20 | 17 | 14 | 12 | 4.03E-8 | > 1.00E-4 | > 1.00E-4 |
| HOP-62 | 0.394 | 0.978 | 0.920 | 0.568 | 0.533 | 0.532 | 0.513 | 90 | 30 | 24 | 24 | 20 | 4.61E-8 | > 1.00E-4 | > 1.00E-4 |
| NCI-H226 | 1.075 | 2.462 | 2.289 | 1.827 | 1.610 | 1.561 | 1.250 | 88 | 54 | 39 | 35 | 13 | 1.86E-7 | > 1.00E-4 | > 1.00E-4 |
| NCI-H23 | 0.853 | 2.196 | 2.052 | 1.151 | 1.030 | 0.857 | 0.663 | 89 | 22 | 13 | . | -22 | 3.85E-8 | 1.03E-5 | > 1.00E-4 |
| NCI-H322M | 0.800 | 1.689 | 1.605 | 1.139 | 1.064 | 1.090 | 0.978 | 90 | 38 | 30 | 33 | 20 | 5.93E-8 | > 1.00E-4 | > 1.00E-4 |
| NCI-H460 | 0.220 | 2.131 | 2.131 | 0.442 | 0.350 | 0.335 | 0.303 | 100 | 12 | 7 | 6 | 4 | 3.68E-8 | > 1.00E-4 | > 1.00E-4 |
| NCI-H522 | 1.032 | 2.092 | 1.307 | 0.804 | 0.735 | 0.803 | 0.705 | 26 | -22 | -29 | -22 | -32 | < 1.00E-8 | 3.46E-8 | > 1.00E-4 |
| Colon Cancer | | | | | | | | | | | | | | | |
| COLO 205 | 0.616 | 2.372 | 2.285 | 0.617 | 0.280 | 0.123 | 0.138 | 95 | . | -55 | -80 | -78 | 2.98E-8 | 1.00E-7 | 8.26E-7 |
| HCC-2998 | 1.089 | 2.626 | 2.529 | 1.181 | 0.849 | 0.766 | 0.201 | 94 | 6 | -22 | -30 | -82 | 3.15E-8 | 1.63E-7 | 2.46E-5 |
| HCT-116 | 0.235 | 1.585 | 1.542 | 0.475 | 0.357 | 0.310 | 0.233 | 97 | 18 | 9 | 6 | -1 | 3.91E-8 | 7.37E-5 | > 1.00E-4 |
| HCT-15 | 0.325 | 2.024 | 1.760 | 0.657 | 0.478 | 0.452 | 0.415 | 84 | 20 | 9 | 7 | 5 | 3.39E-8 | > 1.00E-4 | > 1.00E-4 |
| HT29 | 0.259 | 1.449 | 1.467 | 0.292 | 0.290 | 0.270 | 0.184 | 101 | 3 | 3 | 1 | -29 | 3.32E-8 | 1.07E-5 | > 1.00E-4 |
| KM12 | 0.498 | 2.172 | 1.726 | 0.738 | 0.663 | 0.611 | 0.390 | 73 | 14 | 10 | 7 | -22 | 2.49E-8 | 1.72E-5 | > 1.00E-4 |
| SW-620 | 0.357 | 2.329 | 2.192 | 0.832 | 0.781 | 0.797 | 0.688 | 93 | 24 | 22 | 22 | 17 | 4.21E-8 | > 1.00E-4 | > 1.00E-4 |
| CNS Cancer | | | | | | | | | | | | | | | |
| SF-268 | 0.551 | 1.756 | 1.578 | 1.079 | 0.970 | 0.740 | 0.525 | 85 | 44 | 35 | 16 | -5 | 7.10E-8 | 5.83E-5 | > 1.00E-4 |
| SF-295 | 1.121 | 2.977 | 2.671 | 1.035 | 0.996 | 1.122 | 1.233 | 83 | -8 | -11 | . | 6 | 2.33E-8 | . | > 1.00E-4 |
| SF-539 | 0.846 | 2.493 | 2.412 | 0.747 | 0.727 | 0.829 | 0.832 | 95 | -12 | -14 | -2 | -2 | 2.64E-8 | 7.76E-8 | > 1.00E-4 |
| SNB-19 | 1.249 | 2.369 | 2.284 | 1.819 | 1.890 | 1.753 | 1.556 | 92 | 51 | 57 | 45 | 27 | 3.89E-6 | > 1.00E-4 | > 1.00E-4 |
| SNB-75 | 0.760 | 1.467 | 1.351 | 0.750 | 0.875 | 0.941 | 0.843 | 84 | -1 | 16 | 26 | 12 | 2.49E-8 | . | > 1.00E-4 |
| Melanoma | | | | | | | | | | | | | | | |
| MALME-3M | 0.807 | 1.617 | 1.433 | 1.014 | 1.161 | 1.089 | 0.877 | 77 | 26 | 44 | 35 | 9 | 3.37E-8 | > 1.00E-4 | > 1.00E-4 |
| M14 | 0.449 | 1.527 | 1.477 | 0.363 | 0.449 | 0.390 | 0.370 | 95 | -19 | . | -13 | -18 | 2.49E-8 | 1.00E-6 | > 1.00E-4 |
| MDA-MB-435 | 0.563 | 2.174 | 1.347 | 0.224 | 0.322 | 0.263 | 0.246 | 49 | -60 | -43 | -53 | -56 | < 1.00E-8 | 2.80E-8 | . |
| SK-MEL-28 | 0.493 | 1.468 | 1.274 | 0.873 | 0.991 | 0.890 | 0.723 | 80 | 39 | 51 | 41 | 24 | . | > 1.00E-4 | > 1.00E-4 |
| SK-MEL-5 | 1.002 | 3.262 | 2.858 | 1.499 | 0.982 | 0.744 | 0.379 | 82 | 22 | -2 | -26 | -62 | 3.42E-8 | 8.22E-7 | 4.63E-5 |
| UACC-257 | 0.860 | 1.882 | 1.693 | 1.414 | 1.395 | 1.394 | 1.166 | 81 | 54 | 52 | 52 | 30 | 1.26E-5 | > 1.00E-4 | > 1.00E-4 |
| UACC-62 | 0.834 | 2.437 | 2.123 | 1.520 | 1.162 | 1.166 | 0.907 | 80 | 43 | 20 | 21 | 5 | 6.42E-8 | > 1.00E-4 | > 1.00E-4 |
| Ovarian Cancer | | | | | | | | | | | | | | | |
| IGROV1 | 0.563 | 1.679 | 1.529 | 0.925 | 0.863 | 0.649 | 0.330 | 87 | 32 | 27 | 8 | -41 | 4.74E-8 | 1.44E-5 | > 1.00E-4 |
| OVCAR-3 | 0.478 | 1.464 | 1.426 | 0.480 | 0.517 | 0.508 | 0.311 | 96 | . | 4 | 3 | -35 | 3.03E-8 | 1.20E-5 | > 1.00E-4 |
| OVCAR-4 | 0.716 | 1.285 | 1.232 | 1.068 | 0.957 | 0.904 | 0.759 | 91 | 62 | 42 | 33 | 8 | 4.01E-7 | > 1.00E-4 | > 1.00E-4 |
| OVCAR-5 | 0.545 | 1.384 | 1.400 | 0.758 | 0.813 | 0.754 | 0.633 | 102 | 25 | 32 | 25 | 10 | 4.76E-8 | > 1.00E-4 | > 1.00E-4 |
| OVCAR-8 | 0.550 | 2.042 | 2.020 | 0.881 | 0.655 | 0.675 | 0.554 | 99 | 22 | 7 | 8 | . | 4.32E-8 | > 1.00E-4 | > 1.00E-4 |
| NCI/ADR-RES | 0.625 | 1.783 | 1.578 | 0.519 | 0.321 | 0.387 | 0.507 | 82 | -17 | -49 | -38 | -19 | 2.11E-8 | 6.74E-8 | > 1.00E-4 |
| SK-OV-3 | 0.579 | 1.102 | 1.054 | 0.554 | 0.515 | 0.511 | 0.323 | 91 | -4 | -11 | -12 | -44 | 2.68E-8 | 8.99E-8 | > 1.00E-4 |
| Renal Cancer | | | | | | | | | | | | | | | |
| 786-0 | 0.659 | 2.265 | 2.218 | 1.214 | 1.057 | 0.814 | 0.685 | 97 | 35 | 25 | 10 | 2 | 5.66E-8 | > 1.00E-4 | > 1.00E-4 |
| A498 | 1.311 | 1.964 | 1.827 | 1.251 | 1.282 | 1.160 | 0.830 | 79 | -5 | -2 | -12 | -37 | 2.22E-8 | 8.81E-8 | > 1.00E-4 |
| ACHN | 0.374 | 1.557 | 1.403 | 0.842 | 0.707 | 0.595 | 0.471 | 87 | 40 | 28 | 19 | 8 | 6.03E-8 | > 1.00E-4 | > 1.00E-4 |
| CAKI-1 | 0.823 | 2.836 | 2.421 | 1.308 | 1.520 | 1.057 | 0.655 | 79 | 24 | 35 | 12 | -20 | 3.40E-8 | 2.30E-5 | > 1.00E-4 |
| RXF 393 | 0.796 | 1.177 | 1.115 | 0.709 | 0.778 | 0.880 | 0.684 | 84 | -11 | -2 | 22 | -14 | 2.27E-8 | . | > 1.00E-4 |
| SN12C | 0.735 | 2.330 | 2.250 | 1.342 | 1.010 | 0.911 | 0.660 | 95 | 38 | 17 | 11 | -10 | 6.16E-8 | 3.29E-5 | > 1.00E-4 |
| TK-10 | 0.846 | 1.649 | 1.588 | 1.196 | 1.285 | 1.131 | 0.736 | 92 | 44 | 55 | 35 | -13 | . | 5.38E-5 | > 1.00E-4 |
| UO-31 | 0.543 | 1.697 | 1.524 | 0.955 | 0.957 | 0.731 | 0.532 | 85 | 36 | 36 | 16 | -2 | 5.13E-8 | 7.75E-5 | > 1.00E-4 |
| Prostate Cancer | | | | | | | | | | | | | | | |
| PC-3 | 0.470 | 1.302 | 1.194 | 0.591 | 0.601 | 0.624 | 0.554 | 87 | 15 | 16 | 19 | 10 | 3.24E-8 | > 1.00E-4 | > 1.00E-4 |
| DU-145 | 0.404 | 1.413 | 1.421 | 0.457 | 0.436 | 0.372 | 0.334 | 101 | 5 | 3 | -8 | -17 | 3.40E-8 | 1.93E-6 | > 1.00E-4 |
| Breast Cancer | | | | | | | | | | | | | | | |
| MCF7 | 0.170 | 0.989 | 0.802 | 0.289 | 0.277 | 0.246 | 0.201 | 77 | 14 | 13 | 9 | 4 | 2.71E-8 | > 1.00E-4 | > 1.00E-4 |
| MDA-MB-231/ATCC | 0.651 | 1.361 | 1.466 | 0.909 | 0.579 | 0.670 | 0.711 | 115 | 36 | -11 | 3 | 8 | 6.70E-8 | . | > 1.00E-4 |
| HS 578T | 1.254 | 2.108 | 2.017 | 1.399 | 1.360 | 1.327 | 1.291 | 89 | 17 | 12 | 8 | 4 | 3.49E-8 | > 1.00E-4 | > 1.00E-4 |
| BT-549 | 0.991 | 1.864 | 1.811 | 1.346 | 0.995 | 0.911 | 0.769 | 94 | 41 | . | -8 | -22 | 6.66E-8 | 1.13E-6 | > 1.00E-4 |
| T-47D | 0.577 | 1.288 | 1.204 | 0.767 | 0.849 | 1.005 | 0.658 | 88 | 27 | 38 | 60 | 11 | . | > 1.00E-4 | > 1.00E-4 |
| MDA-MB-468 | 0.802 | 1.578 | 1.523 | 0.986 | 1.026 | 0.806 | 0.646 | 93 | 24 | 29 | . | -20 | 4.17E-8 | 1.05E-5 | > 1.00E-4 |

Mean Graphs

Report Date :November 13, 2013

Test Date :March 11, 2013

