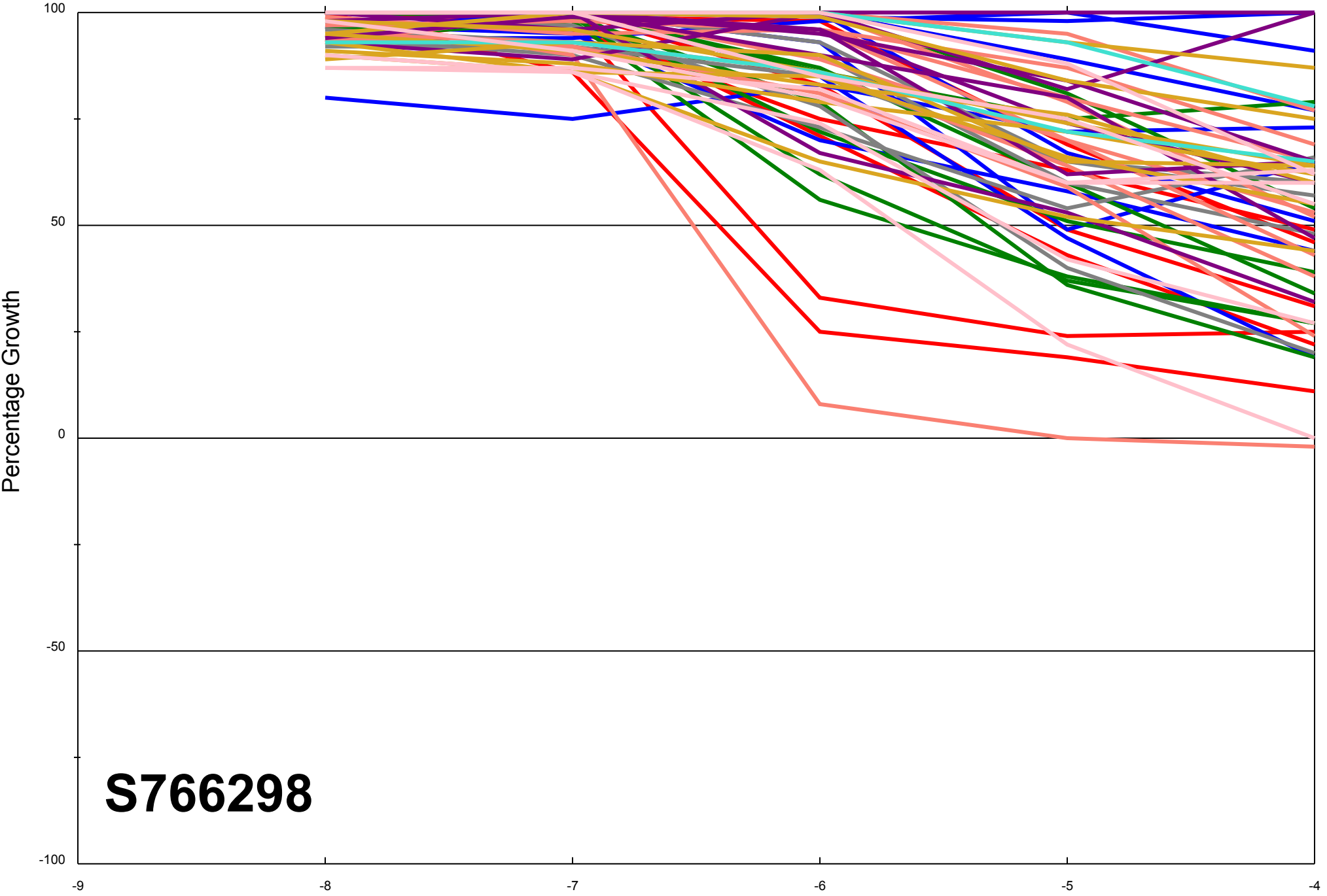


Dose Response Curves

Report Date:February 25, 2013

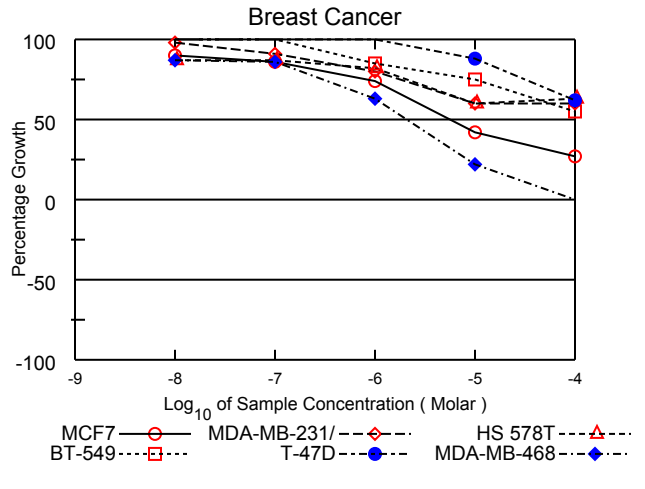
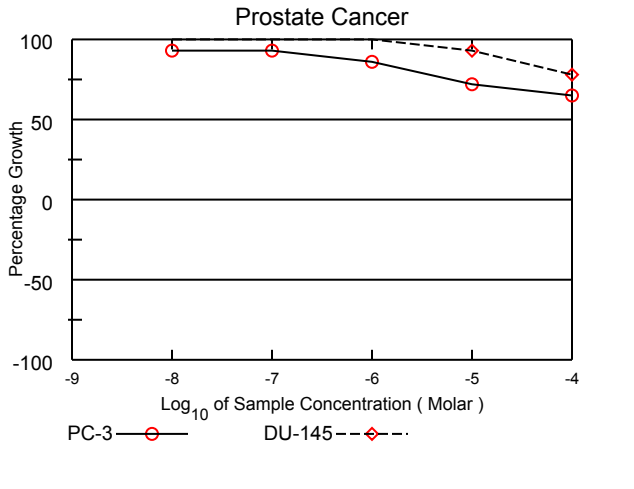
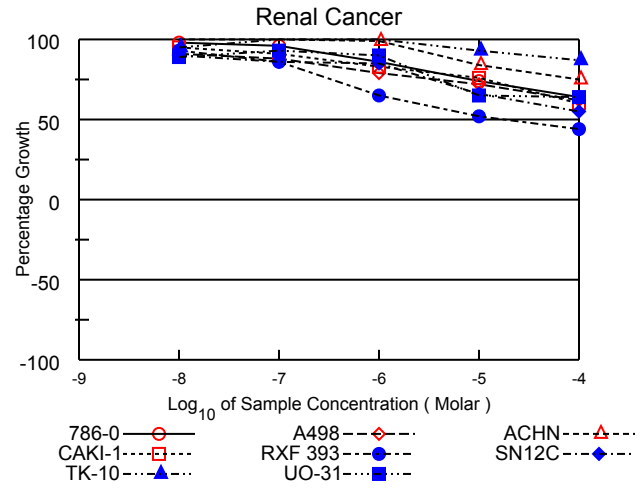
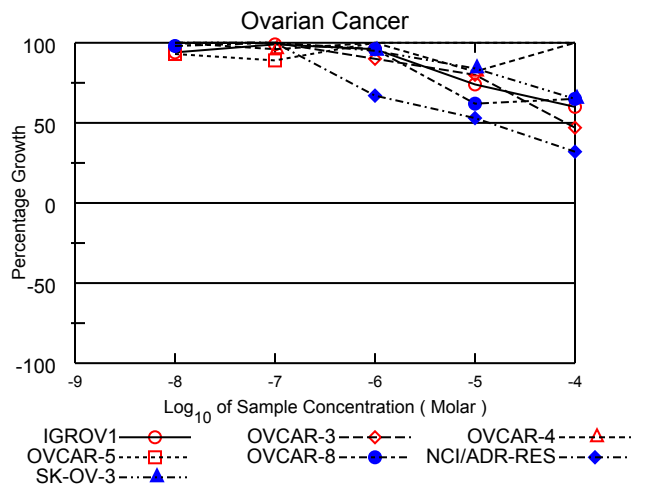
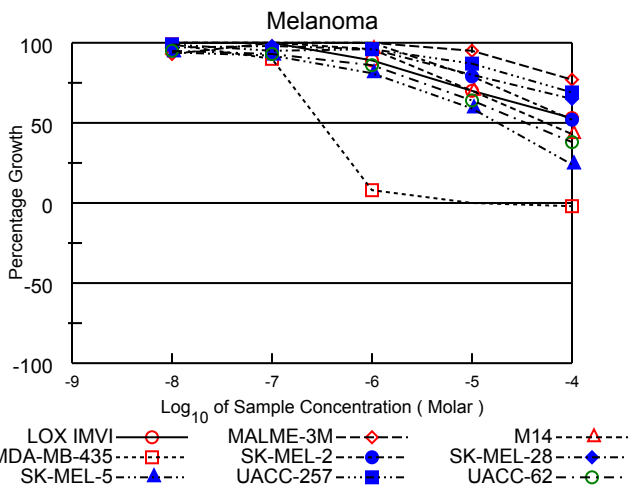
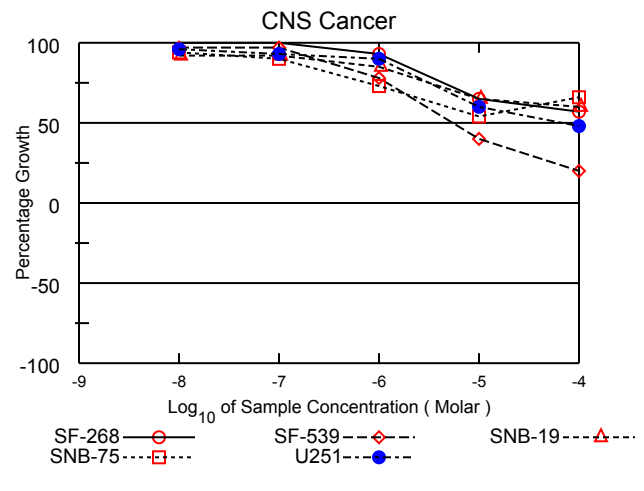
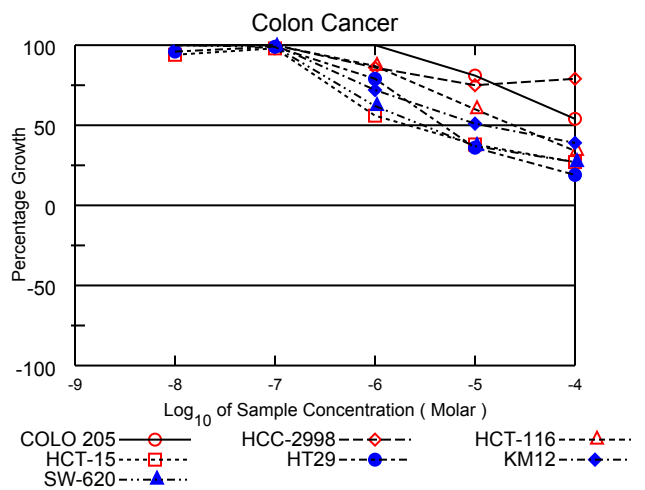
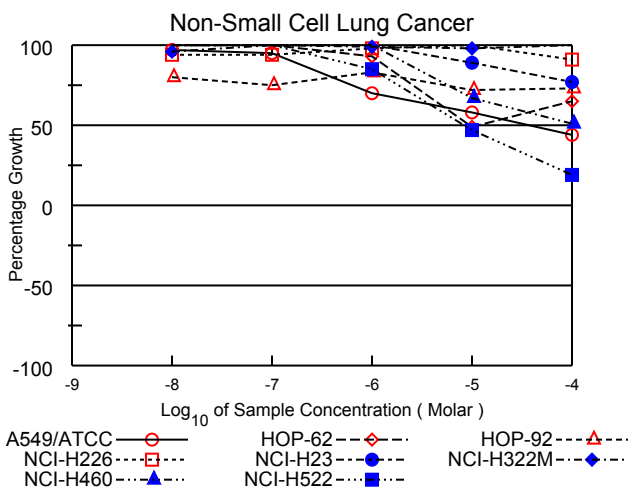
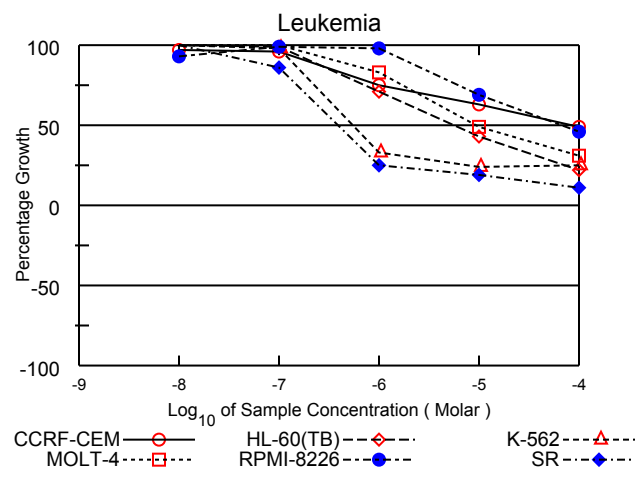
Test Date:September 04, 2012

All Cell Lines



S766298

Log₁₀ of Sample Concentration (Molar)



National Cancer Institute Developmental Therapeutics Program In-Vitro Testing Results

NSC : 766298 / 1	Experiment ID : 1209NS37	Test Type : 08	Units : Molar
Report Date : February 25, 2013	Test Date : September 04, 2012	QNS :	MC :
COMI : A3685/0156310 (119235)	Stain Reagent : SRB Dual-Pass Related	SSPL : 0YAR	

Panel/Cell Line	Log10 Concentration												GI50	TGI	LC50
	Time Zero	Ctrl	-8.0	-7.0	Mean Optical Densities			Percent Growth							
				-6.0	-5.0	-4.0	-8.0	-7.0	-6.0	-5.0	-4.0				
Leukemia															
CCRF-CEM	0.287	1.305	1.272	1.267	1.046	0.929	0.781	97	96	75	63	49	7.95E-5	> 1.00E-4	> 1.00E-4
HL-60(TB)	0.634	2.251	2.298	2.229	1.781	1.323	0.984	103	99	71	43	22	5.48E-6	> 1.00E-4	> 1.00E-4
K-562	0.187	1.375	1.403	1.352	0.576	0.477	0.480	102	98	33	24	25	5.43E-7	> 1.00E-4	> 1.00E-4
MOLT-4	0.594	2.037	2.112	2.293	1.787	1.300	1.036	105	118	83	49	31	9.29E-6	> 1.00E-4	> 1.00E-4
RPMI-8226	0.353	1.224	1.166	1.216	1.210	0.957	0.754	93	99	86	69	46	6.75E-5	> 1.00E-4	> 1.00E-4
SR	0.372	1.467	1.544	1.317	0.643	0.585	0.498	107	86	25	19	11	3.88E-7	> 1.00E-4	> 1.00E-4
Non-Small Cell Lung Cancer															
A549/ATCC	0.368	1.712	1.670	1.650	1.313	1.148	0.954	97	95	70	58	44	3.58E-5	> 1.00E-4	> 1.00E-4
HOP-62	0.452	1.137	1.148	1.202	1.092	0.789	0.895	102	109	93	49	65		> 1.00E-4	> 1.00E-4
HOP-92	1.308	1.637	1.572	1.557	1.581	1.545	1.549	80	75	83	72	73	> 1.00E-4	> 1.00E-4	> 1.00E-4
NCI-H226	0.824	1.504	1.463	1.461	1.494	1.517	1.441	94	94	98	102	91	> 1.00E-4	> 1.00E-4	> 1.00E-4
NCI-H23	0.872	2.152	2.153	2.234	2.166	2.015	1.860	100	106	101	89	77	> 1.00E-4	> 1.00E-4	> 1.00E-4
NCI-H322M	0.797	1.610	1.581	1.645	1.600	1.594	1.613	96	104	99	98	100	> 1.00E-4	> 1.00E-4	> 1.00E-4
NCI-H460	0.344	2.488	2.613	2.607	2.501	1.791	1.445	106	106	101	67	51	> 1.00E-4	> 1.00E-4	> 1.00E-4
NCI-H522	0.997	1.856	1.854	1.899	1.727	1.400	1.163	100	105	85	47	19	8.26E-6	> 1.00E-4	> 1.00E-4
Colon Cancer															
COLO 205	0.394	1.306	1.350	1.389	1.395	1.135	0.888	105	109	110	81	54	> 1.00E-4	> 1.00E-4	> 1.00E-4
HCC-2998	1.077	2.801	2.883	2.797	2.565	2.374	2.442	105	100	86	75	79	> 1.00E-4	> 1.00E-4	> 1.00E-4
HCT-116	0.154	1.342	1.356	1.355	1.187	0.873	0.557	101	101	87	60	34	2.48E-5	> 1.00E-4	> 1.00E-4
HCT-15	0.338	1.472	1.399	1.451	0.969	0.769	0.643	94	98	56	38	27	2.09E-6	> 1.00E-4	> 1.00E-4
HT29	0.187	1.035	1.005	1.029	0.854	0.496	0.346	96	99	79	36	19	4.77E-6	> 1.00E-4	> 1.00E-4
KM12	0.519	1.953	2.045	2.024	1.557	1.246	1.077	106	105	72	51	39	1.15E-5	> 1.00E-4	> 1.00E-4
SW-620	0.480	2.814	2.832	2.788	1.926	1.335	1.112	101	99	62	37	27	2.97E-6	> 1.00E-4	> 1.00E-4
CNS Cancer															
SF-268	0.886	1.993	2.067	2.030	1.911	1.607	1.519	107	103	93	65	57	> 1.00E-4	> 1.00E-4	> 1.00E-4
SF-539	0.907	2.163	2.124	2.122	1.882	1.412	1.163	97	97	78	40	20	5.48E-6	> 1.00E-4	> 1.00E-4
SNB-19	0.800	2.335	2.205	2.215	2.106	1.800	1.718	92	92	85	65	60	> 1.00E-4	> 1.00E-4	> 1.00E-4
SNB-75	0.879	1.792	1.740	1.697	1.548	1.368	1.477	94	90	73	54	66	> 1.00E-4	> 1.00E-4	> 1.00E-4
U251	0.512	2.271	2.197	2.156	2.100	1.574	1.356	96	93	90	60	48	6.86E-5	> 1.00E-4	> 1.00E-4
Melanoma															
LOX IMVI	0.356	1.707	1.728	1.797	1.562	1.299	1.078	102	107	89	70	53	> 1.00E-4	> 1.00E-4	> 1.00E-4
MALME-3M	0.578	0.918	0.894	0.970	0.956	0.902	0.840	93	115	111	95	77	> 1.00E-4	> 1.00E-4	> 1.00E-4
M14	0.488	1.722	1.836	1.865	1.672	1.356	1.015	109	112	96	70	43	5.44E-5	> 1.00E-4	> 1.00E-4
MDA-MB-435	0.407	1.667	1.653	1.546	0.511	0.408	0.398	99	90	8	.	-2	3.10E-7	1.04E-5	> 1.00E-4
SK-MEL-2	0.749	1.212	1.264	1.274	1.238	1.115	0.990	111	113	106	79	52	> 1.00E-4	> 1.00E-4	> 1.00E-4
SK-MEL-28	0.529	1.504	1.479	1.487	1.467	1.313	1.163	97	98	96	80	65	> 1.00E-4	> 1.00E-4	> 1.00E-4
SK-MEL-5	0.589	2.815	2.676	2.643	2.393	1.904	1.120	94	92	81	59	24	> 1.00E-4	> 1.00E-4	> 1.00E-4
UACC-257	0.760	1.436	1.429	1.403	1.408	1.346	1.229	99	95	96	87	69	> 1.00E-4	> 1.00E-4	> 1.00E-4
UACC-62	0.899	2.979	2.883	2.842	2.691	2.224	1.687	95	93	86	64	38	3.39E-5	> 1.00E-4	> 1.00E-4
Ovarian Cancer															
IGROV1	0.665	1.709	1.650	1.702	1.665	1.435	1.290	94	99	96	74	60	> 1.00E-4	> 1.00E-4	> 1.00E-4
OVCAR-3	0.548	1.479	1.548	1.563	1.386	1.292	0.982	107	109	90	80	47	7.89E-5	> 1.00E-4	> 1.00E-4
OVCAR-4	0.575	1.187	1.185	1.162	1.200	1.075	1.213	100	96	102	82	104	> 1.00E-4	> 1.00E-4	> 1.00E-4
OVCAR-5	0.642	1.375	1.322	1.294	1.373	1.403	1.432	93	89	100	104	108	> 1.00E-4	> 1.00E-4	> 1.00E-4
OVCAR-8	0.478	1.813	1.791	1.808	1.764	1.302	1.348	98	100	96	62	65	> 1.00E-4	> 1.00E-4	> 1.00E-4
NCI/ADR-RES	0.650	1.894	1.899	1.941	1.487	1.310	1.053	100	104	67	53	32	1.40E-5	> 1.00E-4	> 1.00E-4
SK-OV-3	0.583	1.380	1.378	1.470	1.338	1.249	1.100	100	111	95	84	65	> 1.00E-4	> 1.00E-4	> 1.00E-4
Renal Cancer															
786-0	0.506	1.804	1.777	1.747	1.625	1.467	1.336	98	96	86	74	64	> 1.00E-4	> 1.00E-4	> 1.00E-4
A498	1.553	2.434	2.355	2.333	2.248	2.186	2.099	91	88	79	72	62	> 1.00E-4	> 1.00E-4	> 1.00E-4
ACHN	0.395	1.402	1.443	1.433	1.391	1.237	1.147	104	103	99	84	75	> 1.00E-4	> 1.00E-4	> 1.00E-4
CAKI-1	0.736	2.367	2.293	2.213	2.090	1.978	1.709	95	91	83	76	60	> 1.00E-4	> 1.00E-4	> 1.00E-4
RXF 393	0.701	1.286	1.246	1.206	1.079	1.003	0.959	93	86	65	52	44	1.61E-5	> 1.00E-4	> 1.00E-4
SN12C	0.726	2.906	2.686	2.601	2.571	2.166	1.925	90	86	85	66	55	> 1.00E-4	> 1.00E-4	> 1.00E-4
TK-10	0.763	1.442	1.406	1.508	1.451	1.396	1.356	95	110	101	93	87	> 1.00E-4	> 1.00E-4	> 1.00E-4
UO-31	0.770	1.700	1.599	1.630	1.606	1.376	1.363	89	93	90	65	64	> 1.00E-4	> 1.00E-4	> 1.00E-4
Prostate Cancer															
PC-3	0.433	1.304	1.247	1.247	1.186	1.061	0.999	93	93	86	72	65	> 1.00E-4	> 1.00E-4	> 1.00E-4
DU-145	0.502	1.566	1.638	1.657	1.631	1.491	1.337	107	109	106	93	78	> 1.00E-4	> 1.00E-4	> 1.00E-4
Breast Cancer															
MCF7	0.384	2.189	2.013	1.938	1.727	1.137	0.877	98	86	74	42	27	5.57E-6	> 1.00E-4	> 1.00E-4
MDA-MB-231/ATCC	0.638	1.568	1.550	1.489	1.379	1.193	1.195	98	91	80	60	60	> 1.00E-4	> 1.00E-4	> 1.00E-4
HS 578T	1.371	2.161	2.058	2.061	2.016	1.845	1.873	87	87	82	60	63	> 1.00E-4	> 1.00E-4	> 1.00E-4
BT-549	0.761	1.560	1.608	1.590	1.439	1.364	1.199	106	104	85	75	55	> 1.00E-4	> 1.00E-4	> 1.00E-4
T-47D	0.672	1.275	1.276	1.323	1.355	1.205	1.045	100	108	113	88	62	> 1.00E-4	> 1.00E-4	> 1.00E-4
MDA-MB-468	0.700	1.499	1.394	1.385	1.200	0.877	0.701	87	86	63	22	.	2.04E-6	> 1.00E-4	> 1.00E-4

Mean Graphs

Report Date :February 25, 2013

Test Date :September 04, 2012

