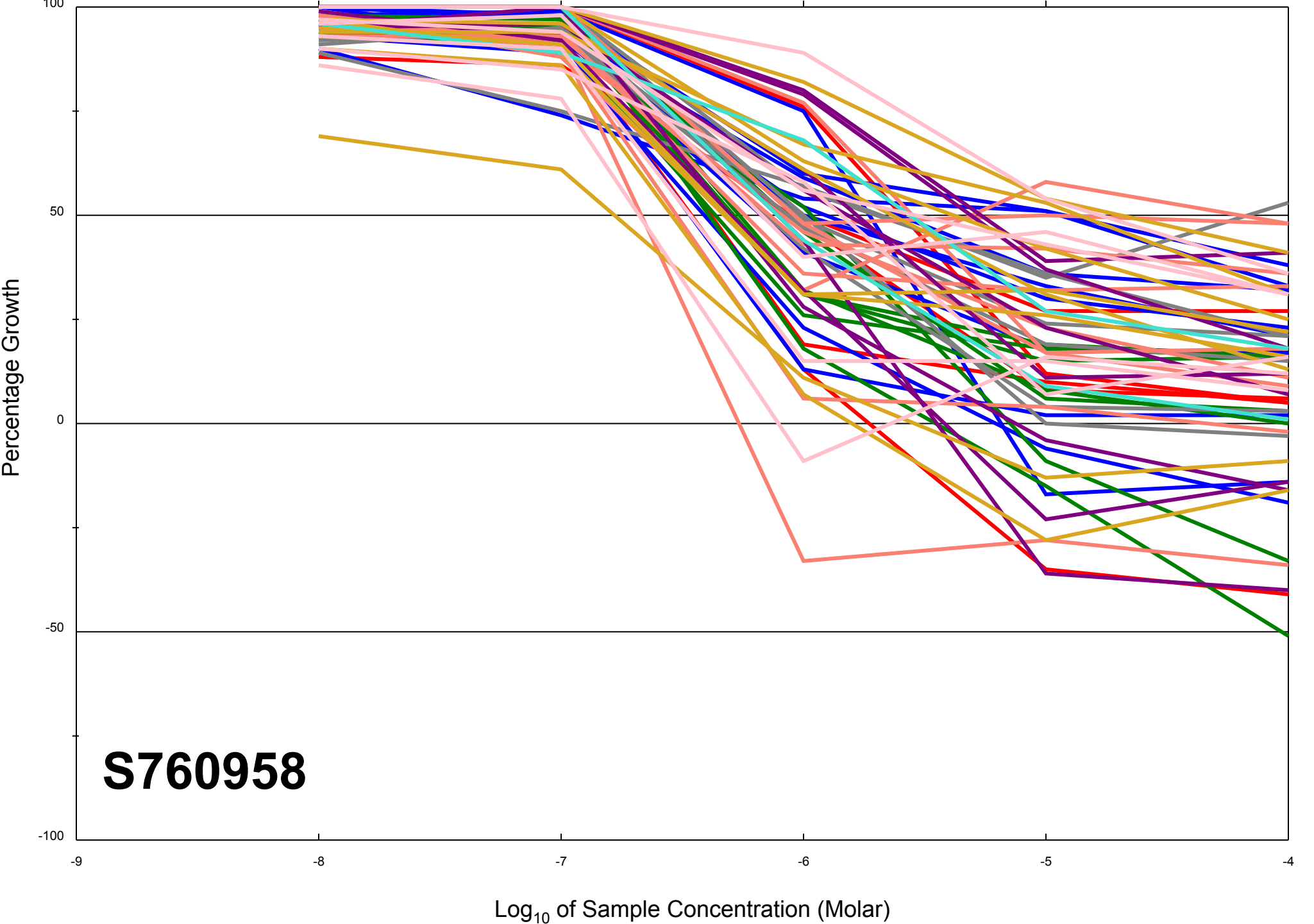


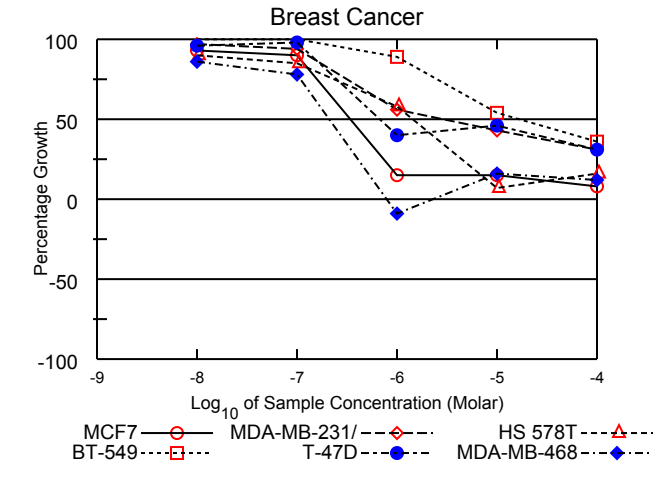
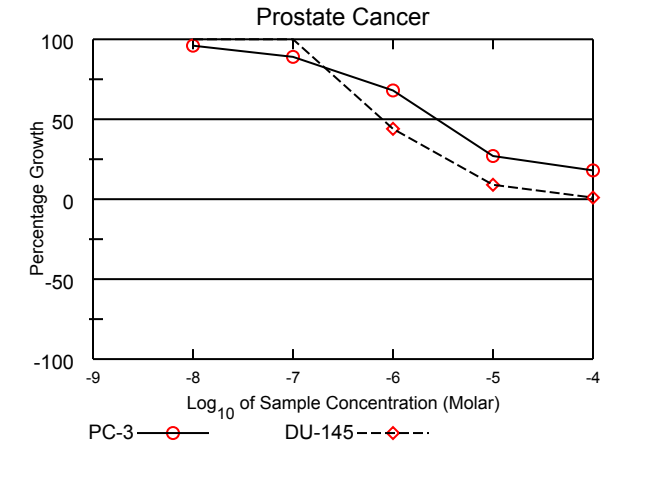
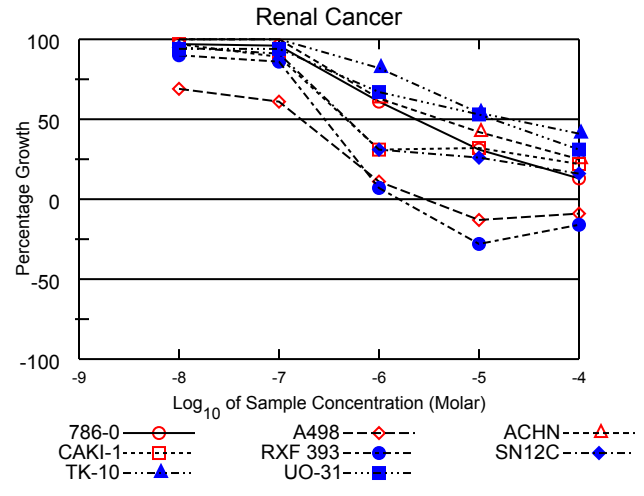
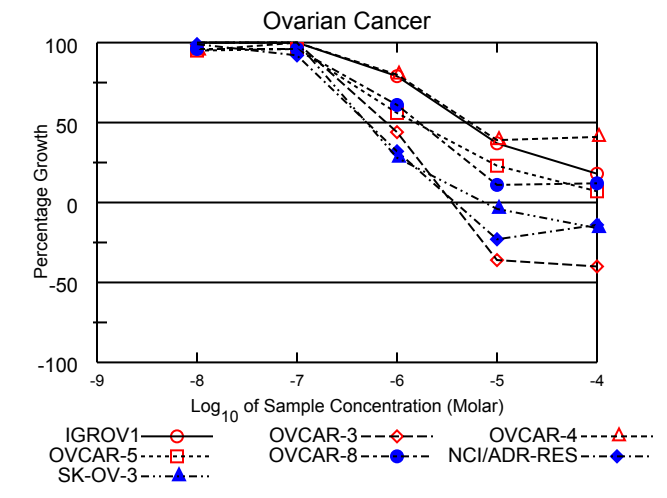
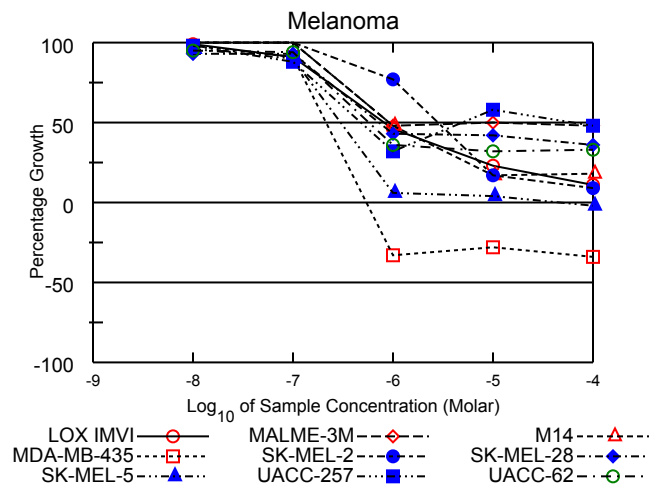
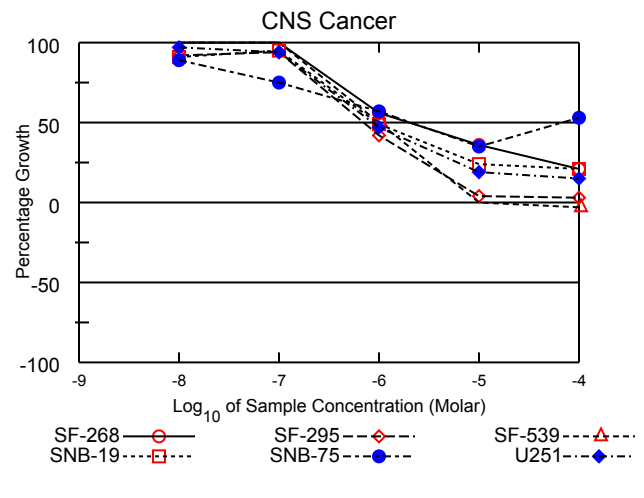
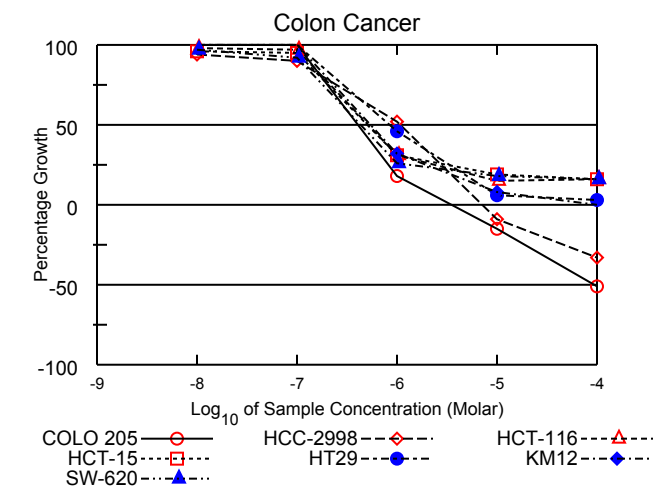
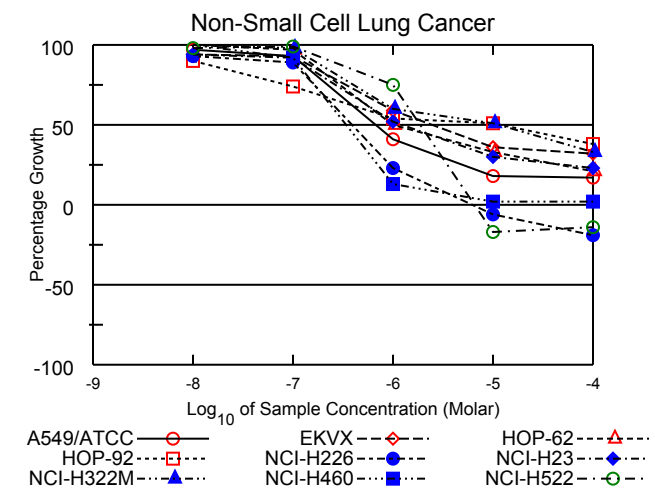
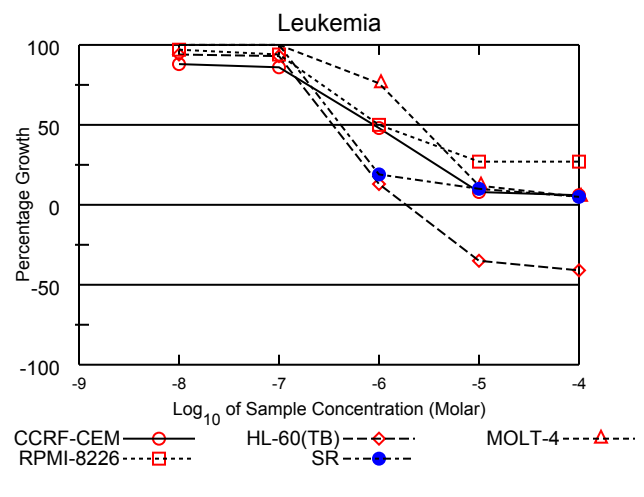
Dose Response Curves

Report Date:December 15, 2011

Test Date:September 06, 2011

All Cell Lines





National Cancer Institute Developmental Therapeutics Program In-Vitro Testing Results

NSC : 760958 / 1	Experiment ID : 1109NS17	Test Type : 08	Units : Molar
Report Date : December 15, 2011	Test Date : September 06, 2011	QNS :	MC :
COMI : NMR/21220115 (107811)	Stain Reagent : SRB Dual-Pass Related	SSPL : 0YAR	

Panel/Cell Line	Log10 Concentration												GI50	TGI	LC50
	Time Zero	Ctrl	-8.0	-7.0	-6.0	-5.0	-4.0	-8.0	-7.0	-6.0	-5.0	-4.0			
Leukemia															
CCRF-CEM	0.498	1.657	1.523	1.496	1.050	0.596	0.563	88	86	48	8	6	8.68E-7	> 1.00E-4	> 1.00E-4
HL-60(TB)	0.758	2.153	2.074	2.057	0.938	0.491	0.445	94	93	13	-35	-41	3.45E-7	1.85E-6	> 1.00E-4
MOLT-4	0.679	2.076	2.110	2.159	1.742	0.844	0.754	102	106	76	12	5	2.54E-6	> 1.00E-4	> 1.00E-4
RPMI-8226	1.007	2.290	2.255	2.214	1.649	1.357	1.351	97	94	50	27	27	1.00E-6	> 1.00E-4	> 1.00E-4
SR	0.200	0.686	0.694	0.685	0.294	0.250	0.226	102	100	19	10	5	4.15E-7	> 1.00E-4	> 1.00E-4
Non-Small Cell Lung Cancer															
A549/ATCC	0.312	1.608	1.564	1.515	0.847	0.550	0.538	97	93	41	18	17	6.78E-7	> 1.00E-4	> 1.00E-4
EKVX	0.572	1.593	1.531	1.517	1.172	0.939	0.894	94	93	59	36	32	2.42E-6	> 1.00E-4	> 1.00E-4
HOP-62	0.435	1.083	1.086	1.065	0.760	0.650	0.570	100	97	50	33	21	1.02E-6	> 1.00E-4	> 1.00E-4
HOP-92	1.026	1.478	1.432	1.361	1.272	1.255	1.199	90	74	54	51	38	1.14E-5	> 1.00E-4	> 1.00E-4
NCI-H226	0.679	1.628	1.561	1.521	0.898	0.636	0.550	93	89	23	-6	-19	3.89E-7	6.09E-6	> 1.00E-4
NCI-H23	0.483	1.302	1.253	1.238	0.910	0.729	0.671	94	92	52	30	23	1.25E-6	> 1.00E-4	> 1.00E-4
NCI-H322M	0.868	1.751	1.783	1.736	1.395	1.320	1.164	104	98	60	51	33	1.17E-5	> 1.00E-4	> 1.00E-4
NCI-H460	0.205	1.786	1.856	1.668	0.408	0.235	0.233	104	92	13	2	2	3.41E-7	> 1.00E-4	> 1.00E-4
NCI-H522	0.735	1.758	1.742	1.744	1.502	0.613	0.634	98	99	75	-17	-14	1.87E-6	6.58E-6	> 1.00E-4
Colon Cancer															
COLO 205	0.334	1.226	1.272	1.229	0.494	0.286	0.165	105	100	18	-15	-51	4.08E-7	3.56E-6	9.54E-5
HCC-2998	0.389	1.296	1.245	1.209	0.859	0.355	0.261	94	90	52	-9	-33	1.07E-6	7.14E-6	> 1.00E-4
HCT-116	0.140	1.141	1.123	1.108	0.448	0.295	0.303	98	97	31	15	16	5.11E-7	> 1.00E-4	> 1.00E-4
HCT-15	0.350	1.843	1.789	1.762	0.815	0.629	0.583	96	95	31	19	16	5.04E-7	> 1.00E-4	> 1.00E-4
HT29	0.227	1.351	1.439	1.468	0.740	0.298	0.260	108	110	46	6	3	8.56E-7	> 1.00E-4	> 1.00E-4
KM12	0.420	1.889	1.932	1.915	0.895	0.539	0.422	103	102	32	8	.	5.57E-7	> 1.00E-4	> 1.00E-4
SW-620	0.247	1.650	1.603	1.531	0.614	0.505	0.470	97	92	26	18	16	4.32E-7	> 1.00E-4	> 1.00E-4
CNS Cancer															
SF-268	0.451	1.414	1.446	1.466	0.992	0.795	0.650	103	105	56	36	21	2.00E-6	> 1.00E-4	> 1.00E-4
SF-295	0.583	2.039	1.925	1.947	1.197	0.641	0.624	92	94	42	4	3	7.04E-7	> 1.00E-4	> 1.00E-4
SF-539	0.670	1.803	1.845	1.839	1.240	0.669	0.649	104	103	50	.	-3	1.01E-6	9.90E-6	> 1.00E-4
SNB-19	0.458	1.677	1.570	1.621	1.059	0.757	0.717	91	95	49	24	21	9.66E-7	> 1.00E-4	> 1.00E-4
SNB-75	0.748	1.605	1.509	1.392	1.233	1.046	1.200	89	75	57	35	53	.	> 1.00E-4	> 1.00E-4
U251	0.298	1.494	1.464	1.426	0.856	0.530	0.477	97	94	47	19	15	8.49E-7	> 1.00E-4	> 1.00E-4
Melanoma															
LOX IMVI	0.194	1.269	1.258	1.171	0.691	0.445	0.315	99	91	46	23	11	8.21E-7	> 1.00E-4	> 1.00E-4
MALME-3M	0.531	1.096	1.112	1.123	0.805	0.816	0.802	103	105	48	50	48	.	> 1.00E-4	> 1.00E-4
M14	0.361	1.332	1.350	1.346	0.830	0.522	0.537	102	101	48	17	18	9.28E-7	> 1.00E-4	> 1.00E-4
MDA-MB-435	0.516	2.188	2.155	2.044	0.346	0.373	0.338	98	91	-33	-28	-34	2.15E-7	5.42E-7	> 1.00E-4
SK-MEL-2	0.869	1.705	1.714	1.756	1.516	1.013	0.945	101	106	77	17	9	2.84E-6	> 1.00E-4	> 1.00E-4
SK-MEL-28	0.441	1.228	1.171	1.173	0.778	0.771	0.723	93	93	43	42	36	7.19E-7	> 1.00E-4	> 1.00E-4
SK-MEL-5	0.295	2.253	2.172	2.051	0.408	0.382	0.290	96	90	6	4	-2	2.97E-7	5.05E-5	> 1.00E-4
UACC-257	0.653	1.412	1.400	1.320	0.900	1.095	1.015	98	88	32	58	48	.	> 1.00E-4	> 1.00E-4
UACC-62	0.689	2.073	2.008	1.989	1.185	1.131	1.139	95	94	36	32	33	5.71E-7	> 1.00E-4	> 1.00E-4
Ovarian Cancer															
IGROV1	0.456	1.523	1.569	1.544	1.298	0.853	0.652	104	102	79	37	18	4.92E-6	> 1.00E-4	> 1.00E-4
OVCAR-3	0.552	1.474	1.553	1.534	0.954	0.352	0.333	109	106	44	-36	-40	7.91E-7	3.52E-6	> 1.00E-4
OVCAR-4	0.420	0.971	0.943	0.983	0.863	0.638	0.644	95	102	80	39	41	5.52E-6	> 1.00E-4	> 1.00E-4
OVCAR-5	0.527	1.421	1.378	1.390	1.028	0.731	0.589	95	96	56	23	7	1.51E-6	> 1.00E-4	> 1.00E-4
OVCAR-8	0.376	1.568	1.522	1.519	1.099	0.504	0.522	96	96	61	11	12	1.63E-6	> 1.00E-4	> 1.00E-4
NCI/ADR-RES	0.451	1.580	1.566	1.494	0.817	0.348	0.386	99	92	32	-23	-14	5.08E-7	3.86E-6	> 1.00E-4
SK-OV-3	0.356	0.863	0.880	0.863	0.500	0.341	0.298	103	100	28	-4	-16	4.99E-7	7.36E-6	> 1.00E-4
Renal Cancer															
786-0	0.457	1.819	1.776	1.761	1.292	0.884	0.630	97	96	61	31	13	2.38E-6	> 1.00E-4	> 1.00E-4
A498	1.040	1.549	1.391	1.349	1.098	0.906	0.951	69	61	11	-13	-9	1.64E-7	2.95E-6	> 1.00E-4
ACHN	0.403	1.637	1.711	1.692	1.184	0.916	0.710	106	104	63	42	25	4.10E-6	> 1.00E-4	> 1.00E-4
CAKI-1	0.595	2.023	1.978	1.861	1.035	1.047	0.909	97	89	31	32	22	4.66E-7	> 1.00E-4	> 1.00E-4
RXF 393	0.550	1.086	1.034	1.011	0.590	0.395	0.465	90	86	7	-28	-16	2.87E-7	1.61E-6	> 1.00E-4
SN12C	0.449	1.646	1.588	1.537	0.820	0.765	0.646	95	91	31	26	16	4.81E-7	> 1.00E-4	> 1.00E-4
TK-10	0.708	1.509	1.527	1.542	1.363	1.138	1.036	102	104	82	54	41	1.93E-5	> 1.00E-4	> 1.00E-4
UO-31	0.540	1.462	1.403	1.405	1.161	1.028	0.823	94	94	67	53	31	1.35E-5	> 1.00E-4	> 1.00E-4
Prostate Cancer															
PC-3	0.483	1.240	1.213	1.155	1.001	0.691	0.619	96	89	68	27	18	2.81E-6	> 1.00E-4	> 1.00E-4
DU-145	0.333	1.242	1.312	1.319	0.733	0.418	0.346	108	108	44	9	1	8.07E-7	> 1.00E-4	> 1.00E-4
Breast Cancer															
MCF7	0.250	1.192	1.126	1.095	0.390	0.388	0.324	93	90	15	15	8	3.39E-7	> 1.00E-4	> 1.00E-4
MDA-MB-231/ATCC	0.637	1.628	1.594	1.570	1.197	1.064	0.942	97	94	56	43	31	3.03E-6	> 1.00E-4	> 1.00E-4
HS 578T	0.814	1.551	1.479	1.443	1.241	0.863	0.935	90	85	58	7	16	1.42E-6	> 1.00E-4	> 1.00E-4
BT-549	0.679	1.565	1.609	1.564	1.469	1.157	0.997	105	100	89	54	36	1.65E-5	> 1.00E-4	> 1.00E-4
T-47D	0.525	1.056	1.035	1.048	0.740	0.772	0.688	96	98	40	46	31	6.83E-7	> 1.00E-4	> 1.00E-4
MDA-MB-468	0.608	1.215	1.131	1.080	0.552	0.704	0.683	86	78	-9	16	12	2.08E-7	.	> 1.00E-4

Mean Graphs

Report Date :December 15, 2011

Test Date :September 06, 2011

