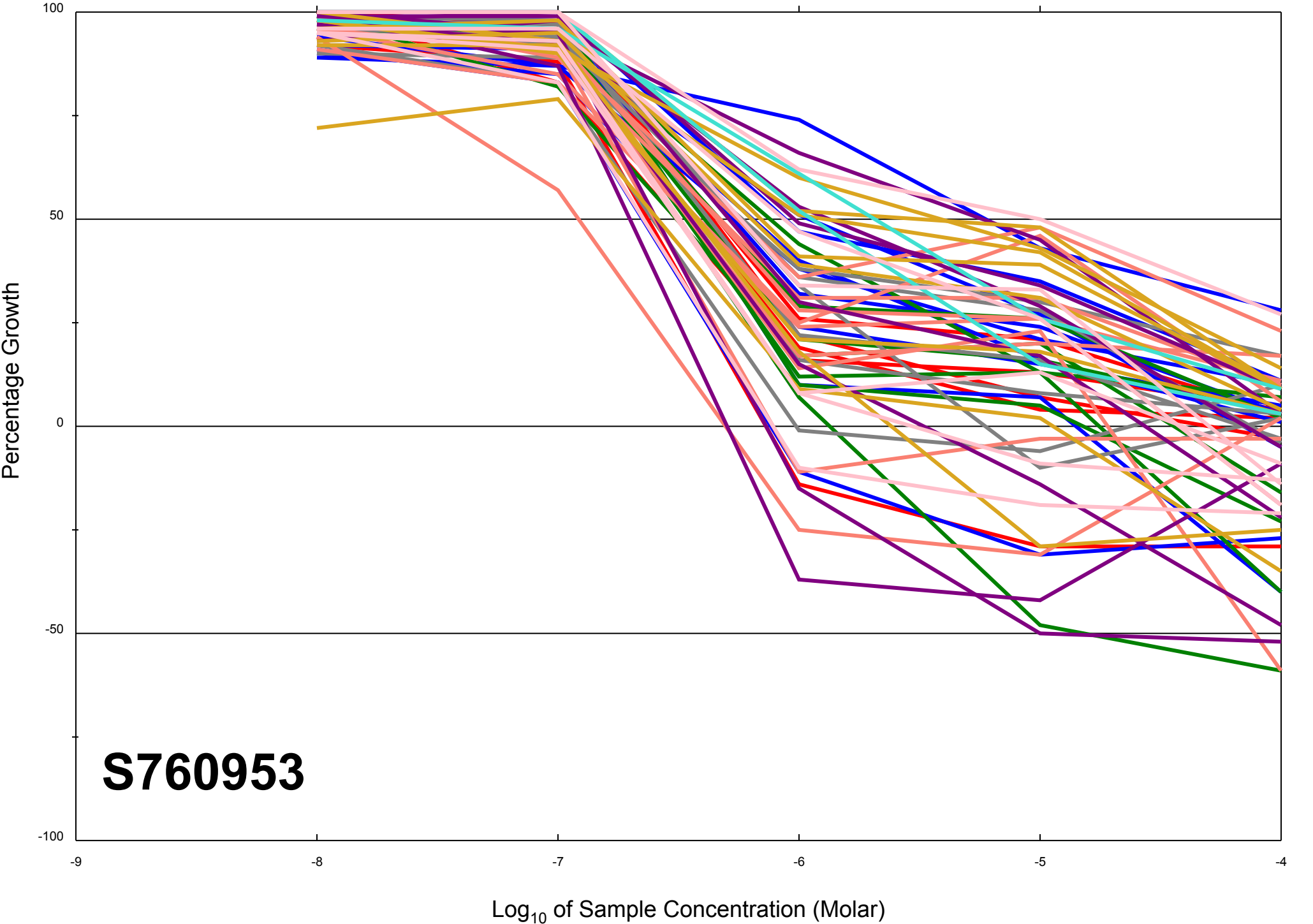


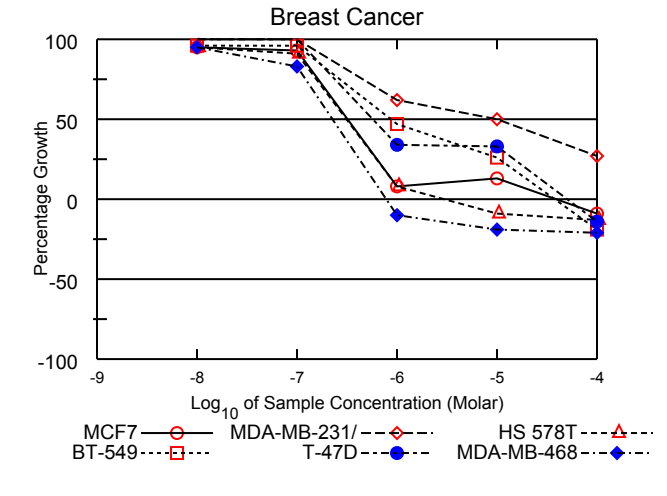
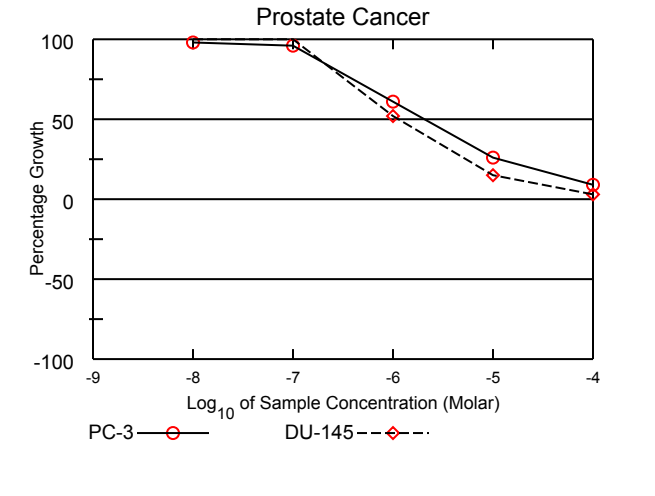
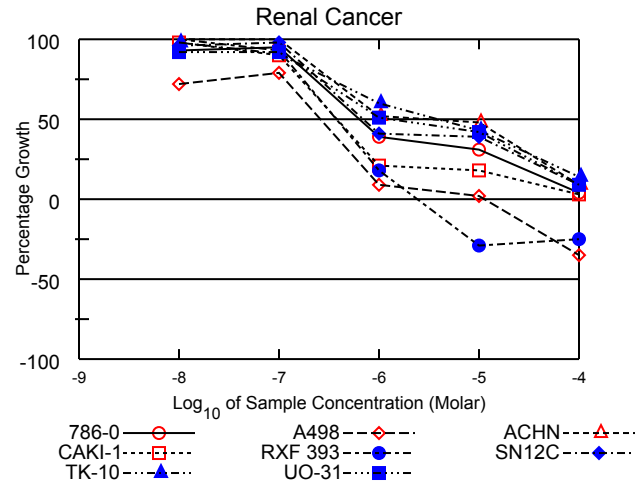
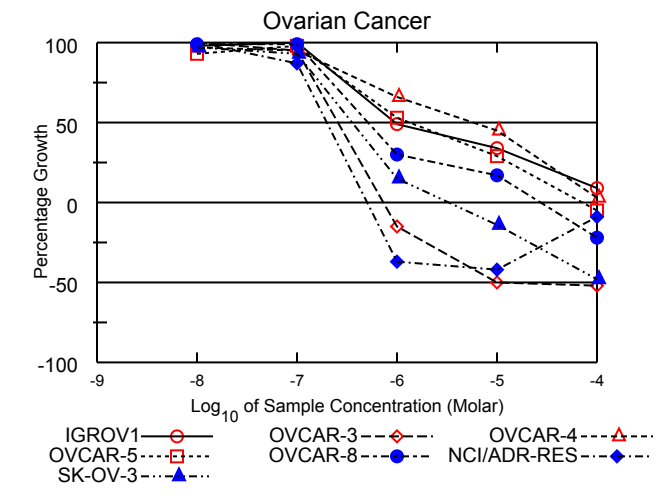
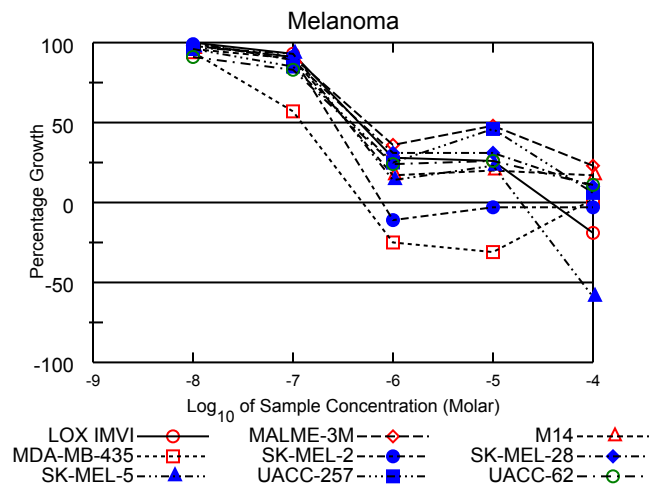
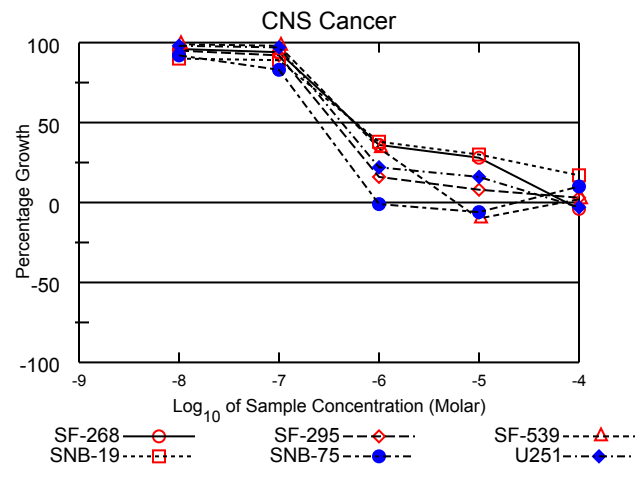
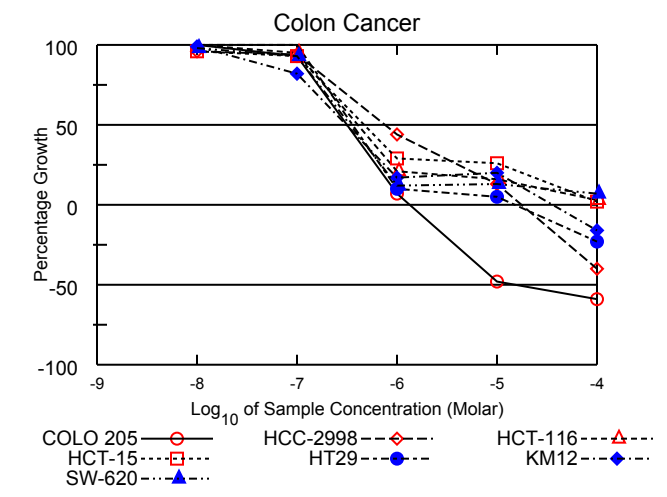
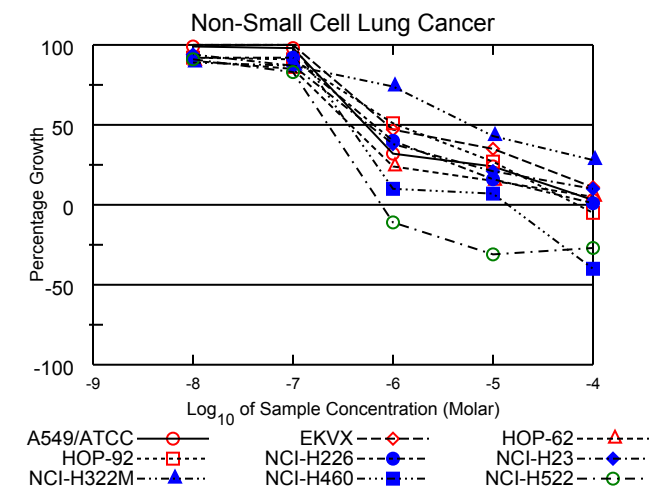
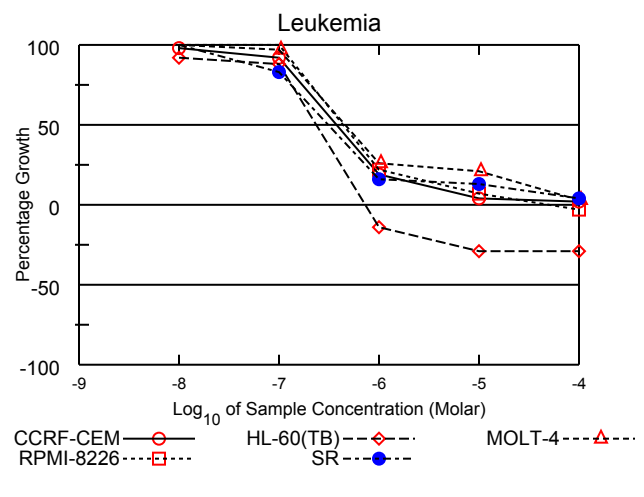
Dose Response Curves

Report Date:December 15, 2011

Test Date:September 06, 2011

All Cell Lines





National Cancer Institute Developmental Therapeutics Program In-Vitro Testing Results

| | | | |
|---------------------------------|---------------------------------------|----------------|---------------|
| NSC : 760953 / 1 | Experiment ID : 1109NS17 | Test Type : 08 | Units : Molar |
| Report Date : December 15, 2011 | Test Date : September 06, 2011 | QNS : | MC : |
| COMI : NMR/20221891 (107804) | Stain Reagent : SRB Dual-Pass Related | SSPL : 0YAR | |

| Panel/Cell Line | Log10 Concentration | | | | | | | | | | | | GI50 | TGI | LC50 |
|-----------------------------------|---------------------|-------|-------|-------|-------|-------|-------|------|------|------|------|------|---------|-----------|-----------|
| | Time Zero | Ctrl | -8.0 | -7.0 | -6.0 | -5.0 | -4.0 | -8.0 | -7.0 | -6.0 | -5.0 | -4.0 | | | |
| Leukemia | | | | | | | | | | | | | | | |
| CCRF-CEM | 0.498 | 1.662 | 1.638 | 1.565 | 0.717 | 0.549 | 0.517 | 98 | 92 | 19 | 4 | 2 | 3.73E-7 | > 1.00E-4 | > 1.00E-4 |
| HL-60(TB) | 0.758 | 2.281 | 2.163 | 2.092 | 0.655 | 0.536 | 0.537 | 92 | 88 | -14 | -29 | -29 | 2.35E-7 | > 7.33E-7 | > 1.00E-4 |
| MOLT-4 | 0.679 | 2.080 | 2.129 | 2.033 | 1.040 | 0.979 | 0.720 | 103 | 97 | 26 | 21 | 3 | 4.55E-7 | > 1.00E-4 | > 1.00E-4 |
| RPMI-8226 | 1.007 | 2.367 | 2.425 | 2.370 | 1.303 | 1.108 | 0.977 | 104 | 100 | 22 | 7 | -3 | 4.37E-7 | 5.17E-5 | > 1.00E-4 |
| SR | 0.200 | 0.707 | 0.719 | 0.623 | 0.280 | 0.264 | 0.220 | 102 | 83 | 16 | 13 | 4 | 3.11E-7 | > 1.00E-4 | > 1.00E-4 |
| Non-Small Cell Lung Cancer | | | | | | | | | | | | | | | |
| A549/ATCC | 0.312 | 1.581 | 1.563 | 1.558 | 0.713 | 0.612 | 0.350 | 99 | 98 | 32 | 24 | 3 | 5.29E-7 | > 1.00E-4 | > 1.00E-4 |
| EKVX | 0.572 | 1.587 | 1.587 | 1.591 | 1.047 | 0.928 | 0.680 | 100 | 100 | 47 | 35 | 11 | 8.71E-7 | > 1.00E-4 | > 1.00E-4 |
| HOP-62 | 0.435 | 1.121 | 1.055 | 1.020 | 0.598 | 0.538 | 0.472 | 90 | 85 | 24 | 15 | 5 | 3.73E-7 | > 1.00E-4 | > 1.00E-4 |
| HOP-92 | 1.026 | 1.492 | 1.457 | 1.448 | 1.264 | 1.154 | 0.980 | 92 | 91 | 51 | 27 | -5 | 1.11E-6 | 7.21E-5 | > 1.00E-4 |
| NCI-H226 | 0.679 | 1.592 | 1.517 | 1.520 | 1.048 | 0.825 | 0.691 | 92 | 92 | 40 | 16 | 1 | 6.53E-7 | > 1.00E-4 | > 1.00E-4 |
| NCI-H23 | 0.483 | 1.343 | 1.291 | 1.231 | 0.807 | 0.666 | 0.566 | 94 | 87 | 38 | 21 | 10 | 5.62E-7 | > 1.00E-4 | > 1.00E-4 |
| NCI-H322M | 0.868 | 1.758 | 1.658 | 1.640 | 1.528 | 1.253 | 1.114 | 89 | 87 | 74 | 43 | 28 | 6.06E-6 | > 1.00E-4 | > 1.00E-4 |
| NCI-H460 | 0.205 | 1.890 | 1.962 | 1.910 | 0.373 | 0.328 | 0.123 | 104 | 101 | 10 | 7 | -40 | 3.64E-7 | 1.42E-5 | > 1.00E-4 |
| NCI-H522 | 0.735 | 1.680 | 1.594 | 1.524 | 0.654 | 0.504 | 0.536 | 91 | 83 | -11 | -31 | -27 | 2.26E-7 | 7.63E-7 | > 1.00E-4 |
| Colon Cancer | | | | | | | | | | | | | | | |
| COLO 205 | 0.334 | 1.161 | 1.205 | 1.103 | 0.394 | 0.175 | 0.138 | 105 | 93 | 7 | -48 | -59 | 3.17E-7 | 1.35E-6 | 1.59E-5 |
| HCC-2998 | 0.389 | 1.329 | 1.295 | 1.274 | 0.802 | 0.509 | 0.233 | 96 | 94 | 44 | 13 | -40 | 7.56E-7 | 1.74E-5 | > 1.00E-4 |
| HCT-116 | 0.140 | 1.207 | 1.202 | 1.158 | 0.360 | 0.314 | 0.175 | 100 | 95 | 21 | 16 | 3 | 4.04E-7 | > 1.00E-4 | > 1.00E-4 |
| HCT-15 | 0.350 | 1.872 | 1.811 | 1.761 | 0.790 | 0.747 | 0.379 | 96 | 93 | 29 | 26 | 2 | 4.67E-7 | > 1.00E-4 | > 1.00E-4 |
| HT29 | 0.227 | 1.363 | 1.371 | 1.409 | 0.344 | 0.283 | 0.174 | 101 | 104 | 10 | 5 | -23 | 3.77E-7 | 1.49E-5 | > 1.00E-4 |
| KM12 | 0.420 | 1.923 | 1.903 | 1.655 | 0.678 | 0.714 | 0.354 | 99 | 82 | 17 | 20 | -16 | 3.12E-7 | 3.57E-5 | > 1.00E-4 |
| SW-620 | 0.247 | 1.738 | 1.714 | 1.641 | 0.426 | 0.448 | 0.352 | 98 | 93 | 12 | 13 | 7 | 3.42E-7 | > 1.00E-4 | > 1.00E-4 |
| CNS Cancer | | | | | | | | | | | | | | | |
| SF-268 | 0.451 | 1.392 | 1.357 | 1.339 | 0.792 | 0.718 | 0.431 | 96 | 94 | 36 | 28 | -4 | 5.80E-7 | 7.32E-5 | > 1.00E-4 |
| SF-295 | 0.583 | 2.058 | 1.985 | 1.943 | 0.824 | 0.697 | 0.632 | 95 | 92 | 16 | 8 | 3 | 3.60E-7 | > 1.00E-4 | > 1.00E-4 |
| SF-539 | 0.670 | 2.042 | 2.032 | 2.020 | 1.132 | 0.600 | 0.694 | 99 | 98 | 34 | -10 | 2 | 5.59E-7 | . | > 1.00E-4 |
| SNB-19 | 0.458 | 1.719 | 1.594 | 1.580 | 0.931 | 0.832 | 0.676 | 90 | 89 | 38 | 30 | 17 | 5.71E-7 | > 1.00E-4 | > 1.00E-4 |
| SNB-75 | 0.748 | 1.596 | 1.525 | 1.451 | 0.742 | 0.702 | 0.834 | 92 | 83 | -1 | -6 | 10 | 2.47E-7 | . | > 1.00E-4 |
| U251 | 0.298 | 1.432 | 1.413 | 1.396 | 0.543 | 0.485 | 0.291 | 98 | 97 | 22 | 16 | -3 | 4.19E-7 | 7.37E-5 | > 1.00E-4 |
| Melanoma | | | | | | | | | | | | | | | |
| LOX IMVI | 0.194 | 1.290 | 1.291 | 1.215 | 0.500 | 0.477 | 0.157 | 100 | 93 | 28 | 26 | -19 | 4.59E-7 | 3.76E-5 | > 1.00E-4 |
| MALME-3M | 0.531 | 1.131 | 1.119 | 1.078 | 0.748 | 0.822 | 0.667 | 98 | 91 | 36 | 48 | 23 | 5.58E-7 | > 1.00E-4 | > 1.00E-4 |
| M14 | 0.361 | 1.370 | 1.331 | 1.271 | 0.535 | 0.564 | 0.534 | 96 | 90 | 17 | 20 | 17 | 3.55E-7 | > 1.00E-4 | > 1.00E-4 |
| MDA-MB-435 | 0.516 | 2.181 | 2.084 | 1.471 | 0.390 | 0.355 | 0.552 | 94 | 57 | -25 | -31 | 2 | 1.23E-7 | . | > 1.00E-4 |
| SK-MEL-2 | 0.869 | 1.620 | 1.614 | 1.552 | 0.775 | 0.840 | 0.840 | 99 | 91 | -11 | -3 | -3 | 2.52E-7 | 7.83E-7 | > 1.00E-4 |
| SK-MEL-28 | 0.441 | 1.289 | 1.285 | 1.197 | 0.708 | 0.702 | 0.524 | 100 | 89 | 31 | 31 | 10 | 4.77E-7 | > 1.00E-4 | > 1.00E-4 |
| SK-MEL-5 | 0.295 | 2.268 | 2.205 | 2.135 | 0.565 | 0.741 | 0.121 | 97 | 93 | 14 | 23 | -59 | 3.50E-7 | 1.89E-5 | 7.73E-5 |
| UACC-257 | 0.653 | 1.391 | 1.360 | 1.284 | 0.838 | 0.989 | 0.696 | 96 | 85 | 25 | 46 | 6 | 3.86E-7 | > 1.00E-4 | > 1.00E-4 |
| UACC-62 | 0.689 | 2.155 | 2.019 | 1.908 | 1.043 | 1.069 | 0.858 | 91 | 83 | 24 | 26 | 11 | 3.65E-7 | > 1.00E-4 | > 1.00E-4 |
| Ovarian Cancer | | | | | | | | | | | | | | | |
| IGROV1 | 0.456 | 1.554 | 1.535 | 1.588 | 0.990 | 0.829 | 0.551 | 98 | 103 | 49 | 34 | 9 | 9.42E-7 | > 1.00E-4 | > 1.00E-4 |
| OVCAR-3 | 0.552 | 1.469 | 1.477 | 1.420 | 0.470 | 0.275 | 0.265 | 101 | 95 | -15 | -50 | -52 | 2.55E-7 | 7.30E-7 | 9.88E-6 |
| OVCAR-4 | 0.420 | 1.169 | 1.150 | 1.130 | 0.916 | 0.759 | 0.444 | 97 | 95 | 66 | 45 | 3 | 5.96E-6 | > 1.00E-4 | > 1.00E-4 |
| OVCAR-5 | 0.527 | 1.406 | 1.346 | 1.390 | 0.995 | 0.780 | 0.503 | 93 | 98 | 53 | 29 | -5 | 1.36E-6 | 7.30E-5 | > 1.00E-4 |
| OVCAR-8 | 0.376 | 1.574 | 1.558 | 1.567 | 0.730 | 0.583 | 0.295 | 99 | 99 | 30 | 17 | -22 | 5.09E-7 | 2.77E-5 | > 1.00E-4 |
| NCI/ADR-RES | 0.451 | 1.598 | 1.608 | 1.451 | 0.282 | 0.261 | 0.410 | 101 | 87 | -37 | -42 | -9 | 1.99E-7 | 5.01E-7 | > 1.00E-4 |
| SK-OV-3 | 0.356 | 0.846 | 0.829 | 0.813 | 0.430 | 0.305 | 0.186 | 97 | 93 | 15 | -14 | -48 | 3.58E-7 | 3.26E-6 | > 1.00E-4 |
| Renal Cancer | | | | | | | | | | | | | | | |
| 786-0 | 0.457 | 1.770 | 1.679 | 1.705 | 0.974 | 0.864 | 0.512 | 93 | 95 | 39 | 31 | 4 | 6.43E-7 | > 1.00E-4 | > 1.00E-4 |
| A498 | 1.040 | 1.579 | 1.429 | 1.468 | 1.088 | 1.052 | 0.679 | 72 | 79 | 9 | 2 | -35 | 2.61E-7 | 1.14E-5 | > 1.00E-4 |
| ACHN | 0.403 | 1.637 | 1.633 | 1.686 | 1.049 | 0.992 | 0.518 | 100 | 104 | 52 | 48 | 9 | 3.23E-6 | > 1.00E-4 | > 1.00E-4 |
| CAKI-1 | 0.595 | 1.955 | 1.926 | 1.825 | 0.887 | 0.833 | 0.629 | 98 | 90 | 21 | 18 | 3 | 3.86E-7 | > 1.00E-4 | > 1.00E-4 |
| RXF 393 | 0.550 | 1.070 | 1.081 | 1.036 | 0.643 | 0.391 | 0.414 | 102 | 93 | 18 | -29 | -25 | 3.75E-7 | 2.40E-6 | > 1.00E-4 |
| SN12C | 0.449 | 1.624 | 1.575 | 1.605 | 0.932 | 0.912 | 0.550 | 96 | 98 | 41 | 39 | 9 | 6.99E-7 | > 1.00E-4 | > 1.00E-4 |
| TK-10 | 0.708 | 1.441 | 1.426 | 1.377 | 1.150 | 1.023 | 0.812 | 98 | 91 | 60 | 43 | 14 | 3.91E-6 | > 1.00E-4 | > 1.00E-4 |
| UO-31 | 0.540 | 1.450 | 1.376 | 1.375 | 1.005 | 0.921 | 0.620 | 92 | 92 | 51 | 42 | 9 | 1.30E-6 | > 1.00E-4 | > 1.00E-4 |
| Prostate Cancer | | | | | | | | | | | | | | | |
| PC-3 | 0.483 | 1.238 | 1.220 | 1.209 | 0.946 | 0.680 | 0.554 | 98 | 96 | 61 | 26 | 9 | 2.09E-6 | > 1.00E-4 | > 1.00E-4 |
| DU-145 | 0.333 | 1.243 | 1.291 | 1.252 | 0.807 | 0.469 | 0.361 | 105 | 101 | 52 | 15 | 3 | 1.13E-6 | > 1.00E-4 | > 1.00E-4 |
| Breast Cancer | | | | | | | | | | | | | | | |
| MCF7 | 0.250 | 1.322 | 1.271 | 1.246 | 0.335 | 0.394 | 0.227 | 95 | 93 | 8 | 13 | -9 | 3.20E-7 | 3.88E-5 | > 1.00E-4 |
| MDA-MB-231/ATCC | 0.637 | 1.687 | 1.740 | 1.803 | 1.293 | 1.160 | 0.924 | 105 | 111 | 62 | 50 | 27 | 9.56E-6 | > 1.00E-4 | > 1.00E-4 |
| HS 578T | 0.814 | 1.621 | 1.577 | 1.546 | 0.883 | 0.742 | 0.705 | 95 | 91 | 8 | -9 | -13 | 3.13E-7 | 3.08E-6 | > 1.00E-4 |
| BT-549 | 0.679 | 1.551 | 1.516 | 1.518 | 1.092 | 0.905 | 0.550 | 96 | 96 | 47 | 26 | -19 | 8.82E-7 | 3.76E-5 | > 1.00E-4 |
| T-47D | 0.525 | 1.045 | 1.090 | 1.077 | 0.703 | 0.695 | 0.450 | 109 | 106 | 34 | 33 | -14 | 6.01E-7 | 4.96E-5 | > 1.00E-4 |
| MDA-MB-468 | 0.608 | 1.187 | 1.157 | 1.087 | 0.547 | 0.492 | 0.480 | 95 | 83 | -10 | -19 | -21 | 2.25E-7 | 7.79E-7 | > 1.00E-4 |

Mean Graphs

Report Date :December 15, 2011

Test Date :September 06, 2011

