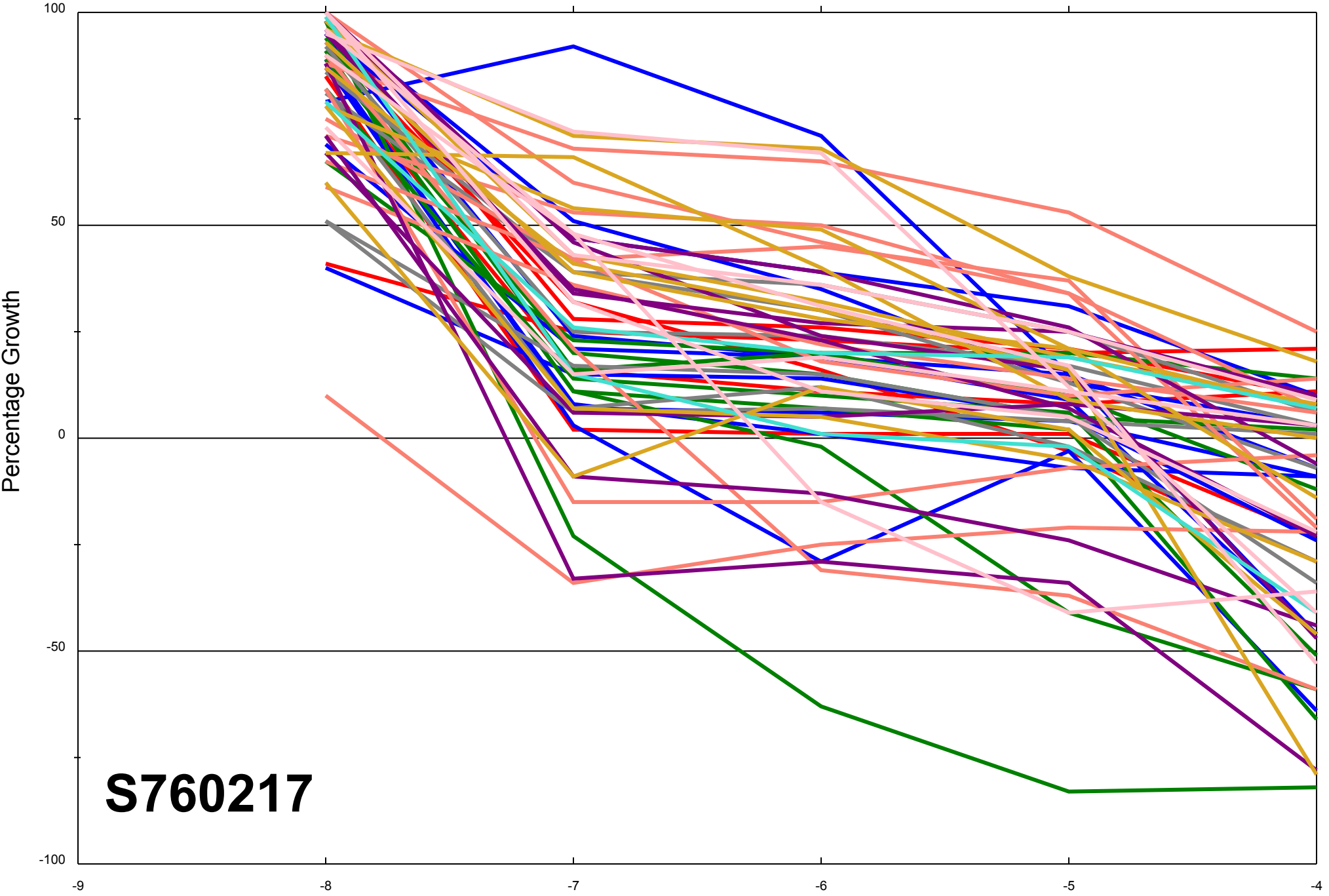
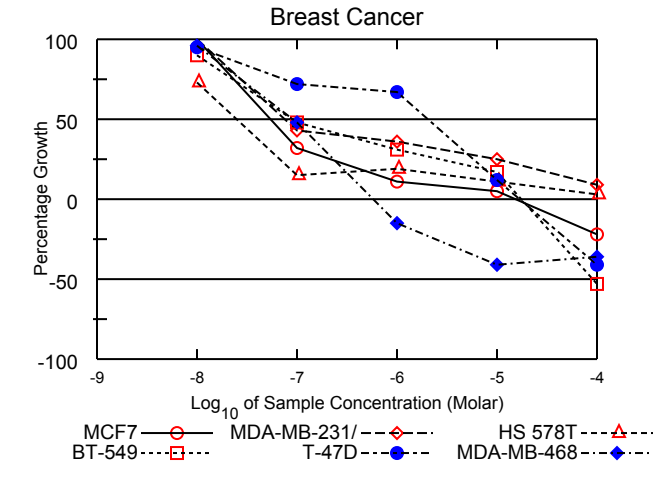
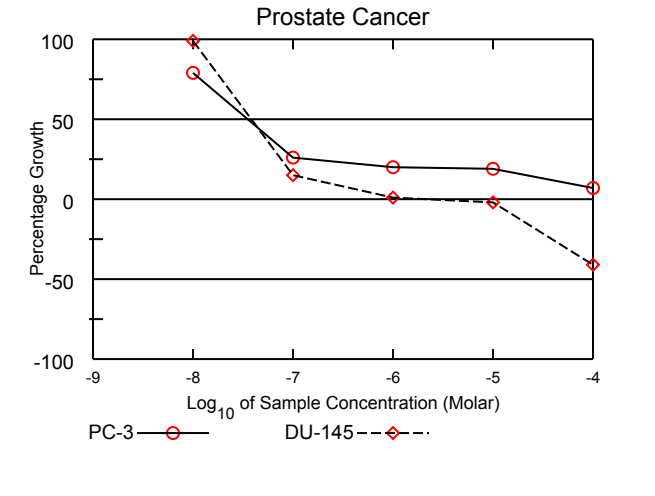
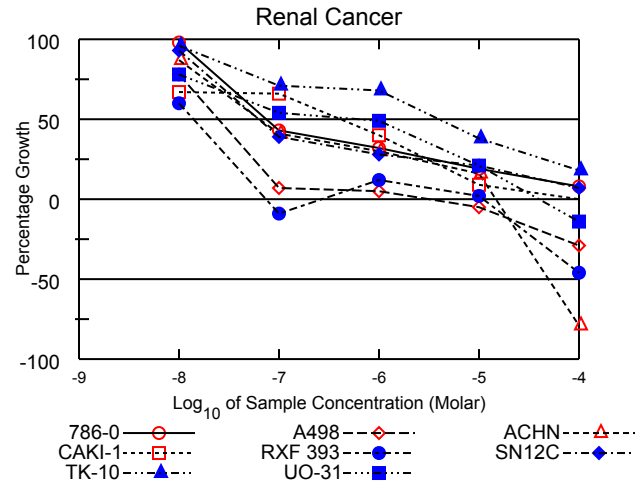
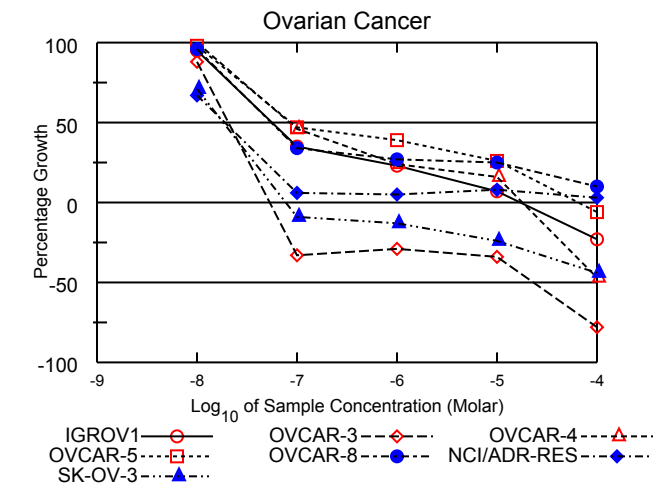
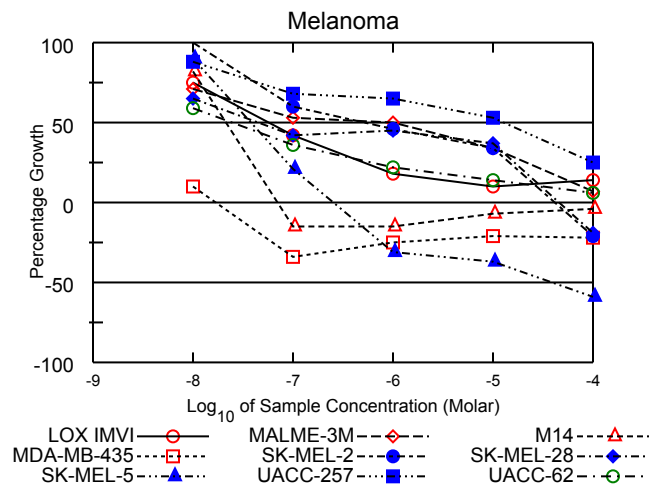
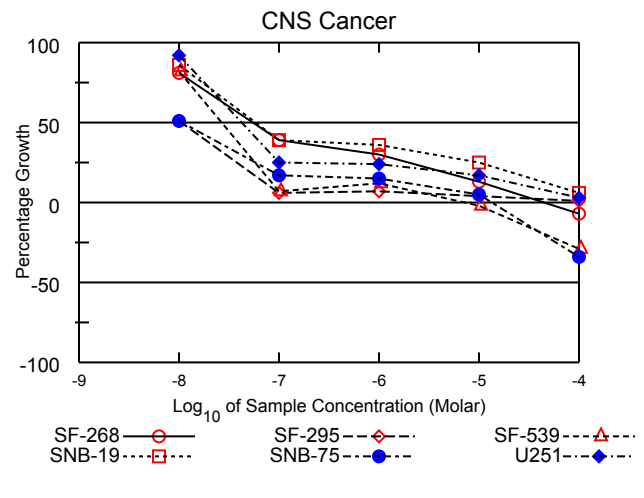
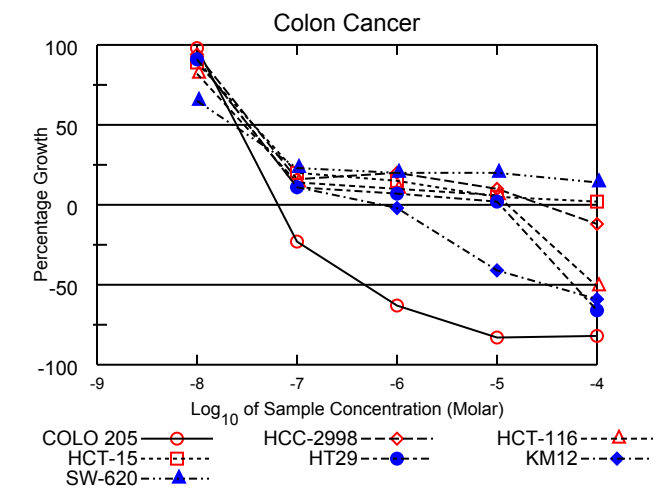
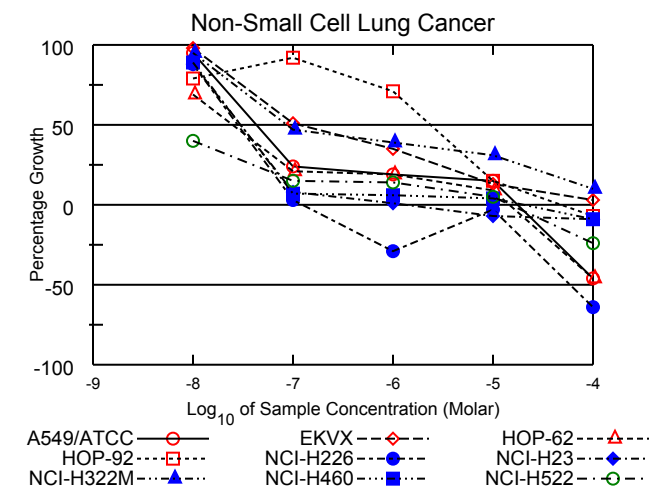
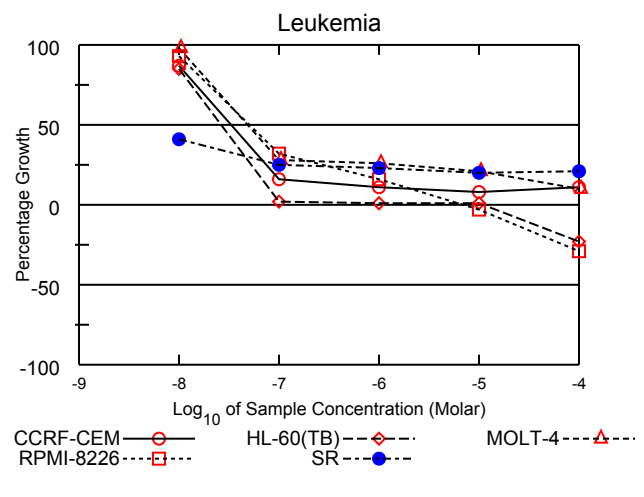


All Cell Lines



S760217

Log₁₀ of Sample Concentration (Molar)



National Cancer Institute Developmental Therapeutics Program In-Vitro Testing Results

NSC : 760217 / 1	Experiment ID : 1108NS94	Test Type : 08	Units : Molar
Report Date : December 15, 2011	Test Date : August 08, 2011	QNS :	MC :
COMI : A4179/0178064 (107433)	Stain Reagent : SRB Dual-Pass Related	SSPL : 0YAR	

Panel/Cell Line	Log10 Concentration												GI50	TGI	LC50
	Time Zero	Ctrl	-8.0	-7.0	-6.0	-5.0	-4.0	-8.0	-7.0	-6.0	-5.0	-4.0			
Leukemia															
CCRF-CEM	0.251	1.177	1.053	0.400	0.353	0.326	0.357	87	16	11	8	11	3.30E-8	> 1.00E-4	> 1.00E-4
HL-60(TB)	0.563	2.407	2.125	0.607	0.585	0.575	0.436	85	2	1	1	-23	2.64E-8	1.07E-5	> 1.00E-4
MOLT-4	0.373	1.770	1.738	0.766	0.733	0.663	0.506	98	28	26	21	10	4.85E-8	> 1.00E-4	> 1.00E-4
RPMI-8226	0.635	1.739	1.666	0.992	0.816	0.619	0.452	93	32	16	-3	-29	5.13E-8	7.36E-6	> 1.00E-4
SR	0.140	0.666	0.355	0.273	0.259	0.247	0.252	41	25	23	20	21	< 1.00E-8	> 1.00E-4	> 1.00E-4
Non-Small Cell Lung Cancer															
A549/ATCC	0.362	1.789	1.722	0.705	0.627	0.579	0.196	95	24	19	15	-46	4.32E-8	1.77E-5	> 1.00E-4
EKVX	0.761	1.669	1.652	1.224	1.076	0.876	0.792	98	51	35	13	3	1.14E-7	> 1.00E-4	> 1.00E-4
HOP-62	0.401	1.087	0.877	0.544	0.533	0.461	0.219	69	21	19	9	-46	2.50E-8	1.45E-5	> 1.00E-4
HOP-92	1.007	1.351	1.278	1.323	1.253	1.057	0.938	79	92	71	15	-7	2.38E-6	4.78E-5	> 1.00E-4
NCI-H226	0.778	1.773	1.655	0.809	0.553	0.754	0.283	88	3	-29	-3	-64	2.81E-8	1.25E-7	5.94E-5
NCI-H23	0.625	2.120	1.947	0.751	0.645	0.581	0.571	88	8	1	-7	-9	3.02E-8	1.43E-6	> 1.00E-4
NCI-H322M	0.719	1.637	1.594	1.150	1.080	1.004	0.812	95	47	39	31	10	8.64E-8	> 1.00E-4	> 1.00E-4
NCI-H460	0.153	1.474	1.328	0.251	0.231	0.209	0.139	89	7	6	4	-9	3.00E-8	2.04E-5	> 1.00E-4
NCI-H522	0.615	2.099	1.208	0.845	0.826	0.682	0.467	40	15	14	5	-24	< 1.00E-8	1.44E-5	> 1.00E-4
Colon Cancer															
COLO 205	0.255	0.900	0.888	0.196	0.096	0.044	0.045	98	-23	-63	-83	-82	2.49E-8	6.42E-8	4.79E-7
HCC-2998	0.475	1.661	1.591	0.664	0.711	0.588	0.419	94	16	20	10	-12	3.66E-8	2.80E-5	> 1.00E-4
HCT-116	0.194	1.469	1.244	0.375	0.320	0.276	0.095	82	14	10	6	-51	2.98E-8	1.29E-5	9.60E-5
HCT-15	0.326	1.940	1.761	0.643	0.564	0.413	0.355	89	20	15	5	2	3.65E-8	> 1.00E-4	> 1.00E-4
HT29	0.224	1.610	1.489	0.375	0.327	0.247	0.077	91	11	7	2	-66	3.26E-8	1.06E-5	5.82E-5
KM12	0.323	1.435	1.332	0.443	0.316	0.192	0.132	91	11	-2	-41	-59	3.23E-8	6.65E-7	3.19E-5
SW-620	0.172	1.224	0.851	0.411	0.385	0.385	0.316	65	23	20	20	14	2.23E-8	> 1.00E-4	> 1.00E-4
CNS Cancer															
SF-268	0.378	1.284	1.108	0.736	0.654	0.497	0.353	81	39	30	13	-7	5.54E-8	4.57E-5	> 1.00E-4
SF-295	0.655	2.313	1.493	0.759	0.774	0.720	0.670	51	6	7	4	1	1.03E-8	> 1.00E-4	> 1.00E-4
SF-539	0.599	1.809	1.590	0.688	0.742	0.588	0.424	82	7	12	-2	-29	2.68E-8	7.34E-6	> 1.00E-4
SNB-19	0.475	1.646	1.486	0.932	0.894	0.774	0.547	86	39	36	25	6	5.85E-8	> 1.00E-4	> 1.00E-4
SNB-75	0.910	1.611	1.271	1.029	1.015	0.948	0.603	51	17	15	5	-34	1.10E-8	1.38E-5	> 1.00E-4
U251	0.342	1.545	1.451	0.647	0.636	0.545	0.380	92	25	24	17	3	4.28E-8	> 1.00E-4	> 1.00E-4
Melanoma															
LOX IMVI	0.388	2.257	1.787	1.167	0.729	0.571	0.646	75	42	18	10	14	5.61E-8	> 1.00E-4	> 1.00E-4
MALME-3M	0.723	1.446	1.238	1.108	1.084	0.967	0.777	71	53	50	34	7	9.00E-7	> 1.00E-4	> 1.00E-4
M14	0.388	1.287	1.124	0.329	0.331	0.361	0.374	82	-15	-15	-7	-4	2.13E-8	6.97E-8	> 1.00E-4
MDA-MB-435	0.444	1.910	0.596	0.293	0.332	0.352	0.349	10	-34	-25	-21	-22	< 1.00E-8	1.71E-8	> 1.00E-4
SK-MEL-2	0.714	1.543	1.558	1.209	1.097	1.000	0.567	102	60	46	34	-21	5.20E-7	4.22E-5	> 1.00E-4
SK-MEL-28	0.435	1.156	0.903	0.737	0.762	0.699	0.352	65	42	45	37	-19	4.41E-8	4.54E-5	> 1.00E-4
SK-MEL-5	0.614	2.334	2.160	0.968	0.423	0.384	0.250	90	21	-31	-37	-59	3.76E-8	2.50E-7	3.76E-5
UACC-257	0.884	2.141	1.990	1.745	1.696	1.545	1.203	88	68	65	53	25	1.24E-5	> 1.00E-4	> 1.00E-4
UACC-62	0.568	2.366	1.636	1.208	0.972	0.813	0.679	59	36	22	14	6	2.48E-8	> 1.00E-4	> 1.00E-4
Ovarian Cancer															
IGROV1	0.428	1.594	1.541	0.832	0.693	0.511	0.328	95	35	23	7	-23	5.59E-8	1.70E-5	> 1.00E-4
OVCAR-3	0.347	1.162	1.065	0.234	0.245	0.231	0.077	88	-33	-29	-34	-78	2.07E-8	5.37E-8	2.34E-5
OVCAR-4	0.543	1.008	1.011	0.757	0.656	0.619	0.288	101	46	24	16	-47	8.45E-8	1.81E-5	> 1.00E-4
OVCAR-5	0.467	1.229	1.213	0.825	0.765	0.667	0.440	98	47	39	26	-6	8.70E-8	6.60E-5	> 1.00E-4
OVCAR-8	0.433	1.891	1.828	0.933	0.829	0.796	0.585	96	34	27	25	10	5.55E-8	> 1.00E-4	> 1.00E-4
NCI/ADR-RES	0.455	1.625	1.238	0.523	0.517	0.547	0.492	67	6	5	8	3	1.89E-8	> 1.00E-4	> 1.00E-4
SK-OV-3	0.536	1.078	0.922	0.490	0.467	0.408	0.302	71	-9	-13	-24	-44	1.84E-8	7.79E-8	> 1.00E-4
Renal Cancer															
786-0	0.680	2.291	2.251	1.368	1.191	0.988	0.807	98	43	32	19	8	7.36E-8	> 1.00E-4	> 1.00E-4
A498	1.031	1.701	1.553	1.081	1.062	0.982	0.734	78	7	5	-5	-29	2.48E-8	3.10E-6	> 1.00E-4
ACHN	0.269	1.161	1.043	0.632	0.534	0.416	0.056	87	41	30	16	-79	6.28E-8	1.49E-5	4.94E-5
CAKI-1	0.902	2.319	1.852	1.842	1.474	1.033	0.908	67	66	40	9	.	4.25E-7	> 1.00E-4	> 1.00E-4
RXF 393	0.810	1.346	1.131	0.736	0.872	0.819	0.439	60	-9	12	2	-46	1.39E-8	.	> 1.00E-4
SN12C	0.456	1.840	1.745	0.999	0.844	0.744	0.553	93	39	28	21	7	6.31E-8	> 1.00E-4	> 1.00E-4
TK-10	0.760	1.651	1.612	1.393	1.364	1.096	0.923	96	71	68	38	18	3.90E-6	> 1.00E-4	> 1.00E-4
UO-31	0.627	1.642	1.422	1.173	1.122	0.837	0.538	78	54	49	21	-14	5.56E-7	3.90E-5	> 1.00E-4
Prostate Cancer															
PC-3	0.480	1.618	1.383	0.773	0.706	0.700	0.559	79	26	20	19	7	3.53E-8	> 1.00E-4	> 1.00E-4
DU-145	0.322	1.333	1.320	0.475	0.328	0.317	0.190	99	15	1	-2	-41	3.83E-8	1.74E-6	> 1.00E-4
Breast Cancer															
MCF7	0.289	1.525	1.531	0.689	0.430	0.348	0.226	101	32	11	5	-22	5.51E-8	1.51E-5	> 1.00E-4
MDA-MB-231/ATCC	0.562	1.444	1.501	0.939	0.880	0.783	0.644	106	43	36	25	9	7.69E-8	> 1.00E-4	> 1.00E-4
HS 578T	0.700	1.466	1.256	0.814	0.848	0.784	0.726	73	15	19	11	3	2.46E-8	> 1.00E-4	> 1.00E-4
BT-549	0.876	1.918	1.812	1.376	1.200	1.052	0.409	90	48	31	17	-53	8.94E-8	1.74E-5	8.97E-5
T-47D	0.507	1.160	1.126	0.975	0.942	0.583	0.298	95	72	67	12	-41	2.00E-6	1.66E-5	> 1.00E-4
MDA-MB-468	0.555	0.961	0.945	0.752	0.469	0.330	0.354	96	48	-15	-41	-36	9.29E-8	5.73E-7	> 1.00E-4

Mean Graphs

Report Date :December 15, 2011

Test Date :August 08, 2011

